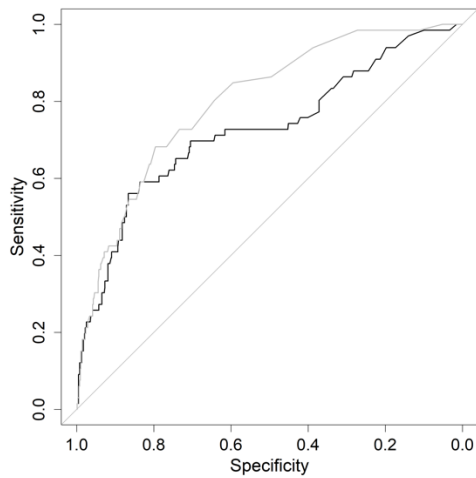


## Supplementary material



**Supplementary Figure S1.** Area under the receiver operating characteristic (ROC) curve (AUC) for SpO<sub>2</sub>/FiO<sub>2</sub> ratio in grey and ROX index in black.

<b>SpO<sub>2</sub>/FiO<sub>2</sub> ratio</b>	specificity	sensitivity	positive predictive value	negative predictive value	positive likelihood ratio	negative likelihood ratio
Estimate	89,49	26,80	34,10	92,01	4,92	0,77
Lower bound	87,65	24,24	33,04	91,79	4,73	0,75
Upper bound	91,32	29,36	35,16	92,22	5,12	0,80
Standard deviation	0,93	1,30	0,54	0,11	0,10	0,01
<b>ROX index</b>	specificity	sensitivity	positive predictive value	negative predictive value	positive likelihood ratio	negative likelihood ratio
Estimate	29,79	79,80	15,86	97,38	1,86	0,25
Lower bound	21,63	73,34	13,80	96,66	1,52	0,18
Upper bound	37,94	86,26	17,93	98,10	2,19	0,32
Standard deviation	4,11	3,25	1,04	0,36	0,17	0,03

**Supplementary Table S1.** Further details of the predictive capacity of SpO<sub>2</sub>/FiO<sub>2</sub> ratio and ROX index