

Table S1: Summary of quantitative analysis of (E)-resveratrol content at each step of the purification process

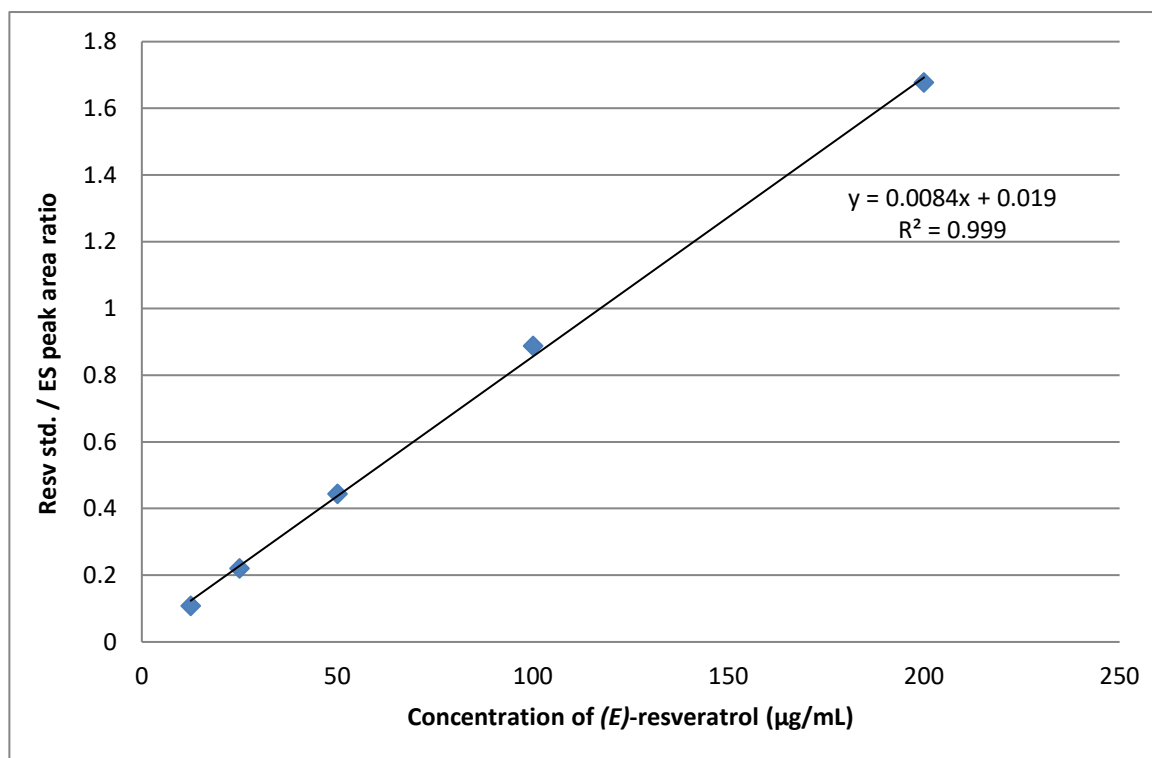
Soxhlet extract in diethyl ether after NaHCO <sub>3</sub> washing		Soxhlet extract after NaHCO <sub>3</sub> washing and Sephadex column chromatography		Soxhlet extract after NaHCO <sub>3</sub> washing, Sephadex LH-20, and RP-Silica column chromatography	
Trial	Avarage A <sub>Resv</sub> / A <sub>ES</sub>	Trial	Avarage A <sub>Resv</sub> / A <sub>ES</sub>	Trial	Avarage A <sub>Resv</sub> / A <sub>ES</sub>
1	1.0193	1	0.9828	1	0.8454
2	1.0186	2	0.9800	2	0.8426
3	1.0155	3	0.9701	3	0.8883
(E)-resveratrol 332.9 ± 0.4 µg/g		(E)-resveratrol 319.6 ± 1.3 µg/g		(E)-resveratrol 279.9 ± 4.9 µg/g	

### Calibration curve

ES: 4-Phenylphenol 1400µg/mL solution  
Data analysis height reject: 100units

Amount: 100µL per 1mL sample  
Baseline at valleys: ON

sample no.	[Resveratrol] µg/ml	Area under the curve						Ratio between Area for Resv. and ES			Avarage
		Run 1		Run 2		Run 3		Run 1	Run 2	Run 3	
		Resv.	ES	Resv.	ES	Resv.	ES				
1	200	37632.4	22480	37611.3	22461.6	37237.6	22127.5	1.674039	1.674471	1.682865	1.677125
2	100	19711.3	22207.1	19693	22191.6	19579.9	22076.2	0.887613	0.887408	0.886923	0.887315
3	50	10007.1	22537.1	9998.9	22532.5	9994.8	22528.1	0.444028	0.443755	0.443659	0.443814
4	25	4959.6	22437.1	4891.6	22133.4	4949.1	22397.2	0.221045	0.221005	0.22097	0.221007
5	12.5	2411.4	21724.1	2442.1	22771.4	2441.9	22780	0.111001	0.107244	0.107195	0.10848



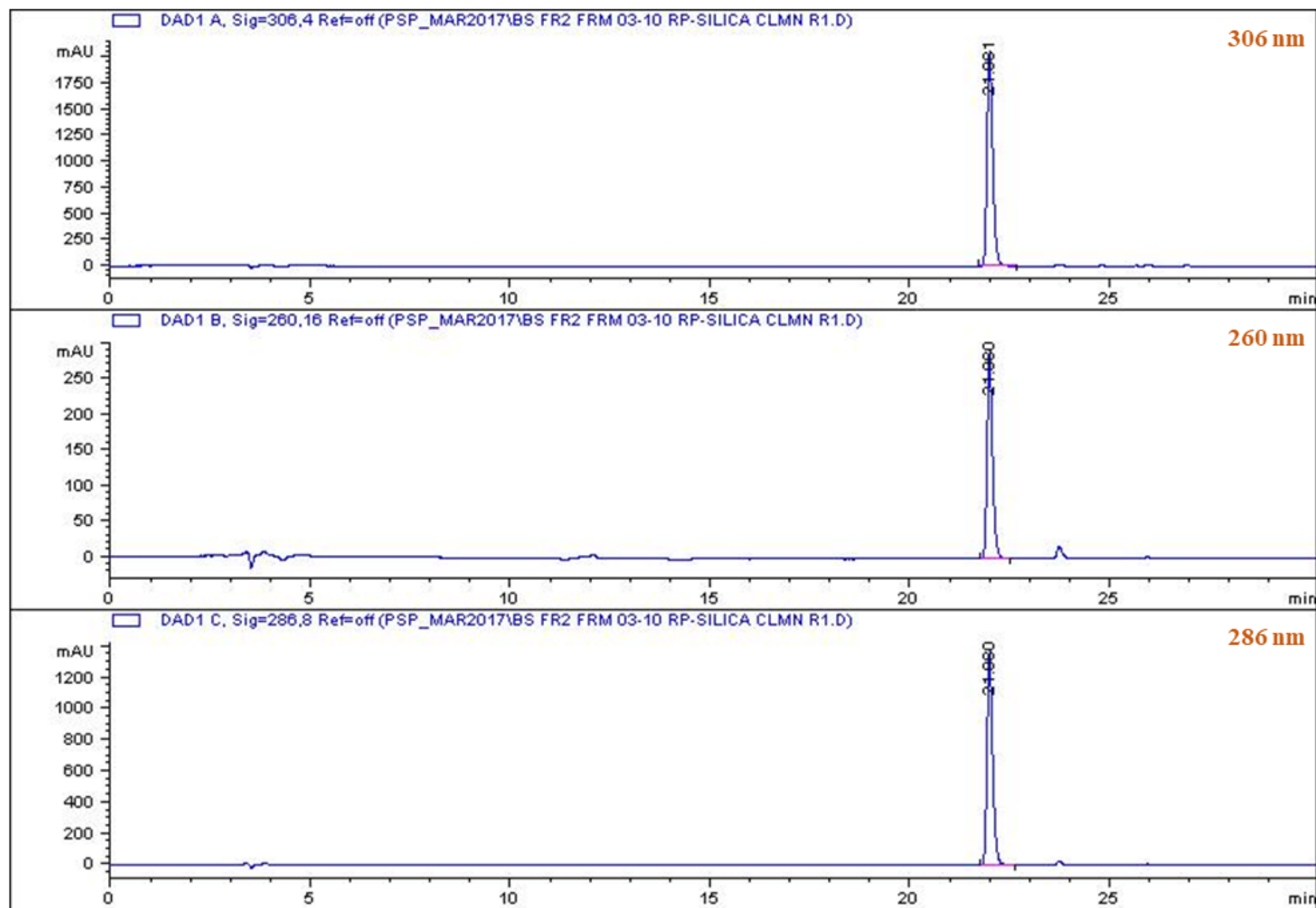
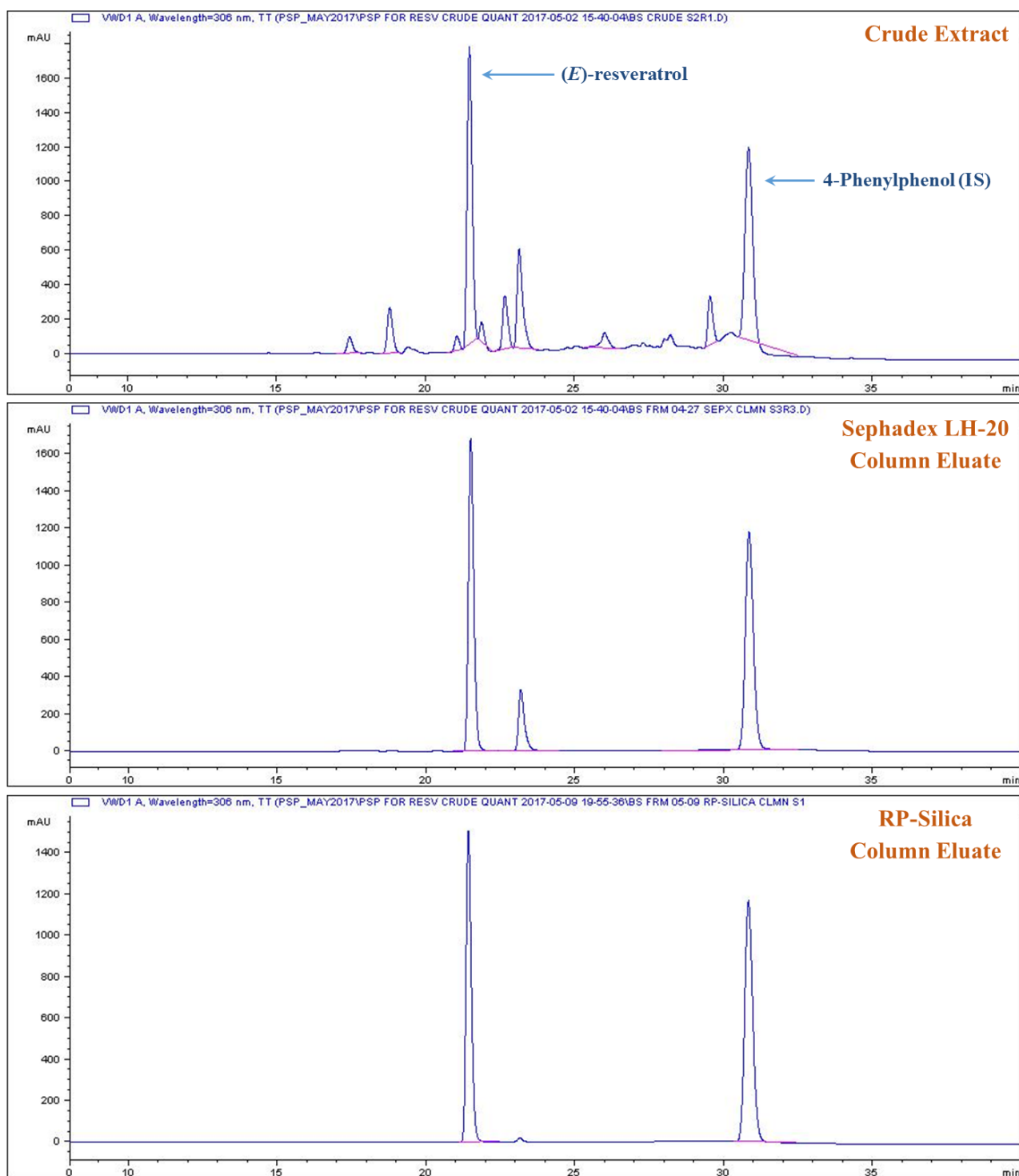


Figure S1: Final purified product HPLC chromatograms at common detector wavelengths (306 nm, 260 nm, and 286 nm) for polyphenolic compounds



**Figure S2: HPLC chromatograms at 306 nm from the major steps of the spruce bark purification process**

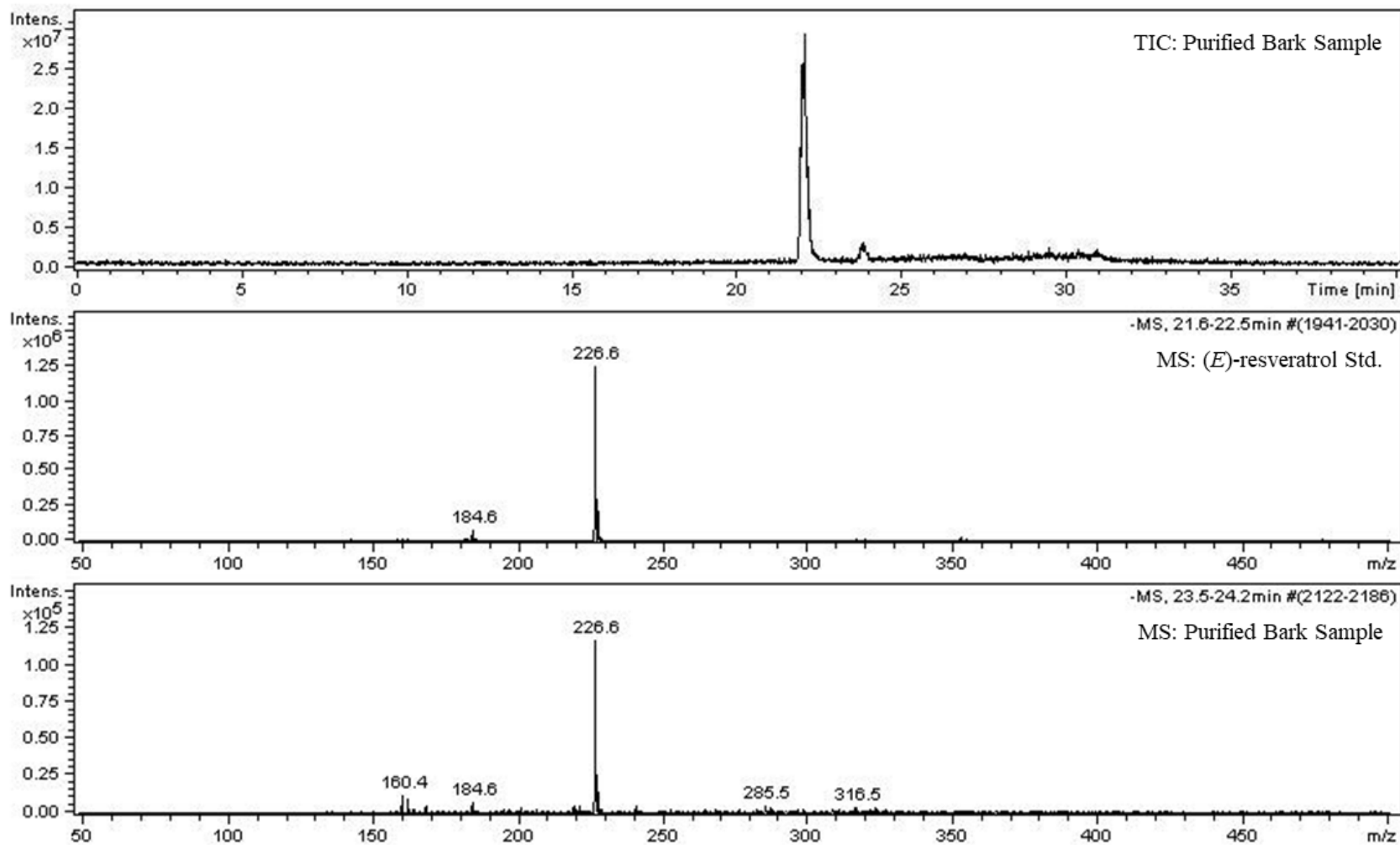


Figure S3: LCMS TIC and mass spectrum of purified BS sample in comparison to resveratrol standard