

Supplementary Materials

Digitised Optimisation of Nanoparticle Synthesis via Laser Ablation: An Industry 4.0 Multivariate Approach for Enhanced Production

Brian Freeland ^{1,2,*}, Ronan McCann ³, Burcu Akkoyunlu ², Manuel Tiefenthaler ^{1,4}, Michal Dabros ⁴, Mandy Juillerat ⁴, Keith D. Rochfort ², Greg Foley ² and Dermot Brabazon ¹

¹ I-Form Advanced Manufacturing Research Centre, Dublin City University, Glasnevin, D09 V209 Dublin, Ireland

² School of Biotechnology, Dublin City University, Glasnevin, D09 V209 Dublin, Ireland; keith.rochfort@dcu.ie (K.D.R.)

³ School of Science and Computing, South East Technological University, X91 Waterford, Ireland

⁴ School of Engineering and Architecture HES-SO, University of Applied Sciences and Arts Western Switzerland, Bd de Pérolles 80, CH-1700 Fribourg, Switzerland; michal.dabros@hefr.ch (M.D.); juilleratmandy@hotmail.com (M.J.)

* Correspondence: brian.freeland@dcu.ie

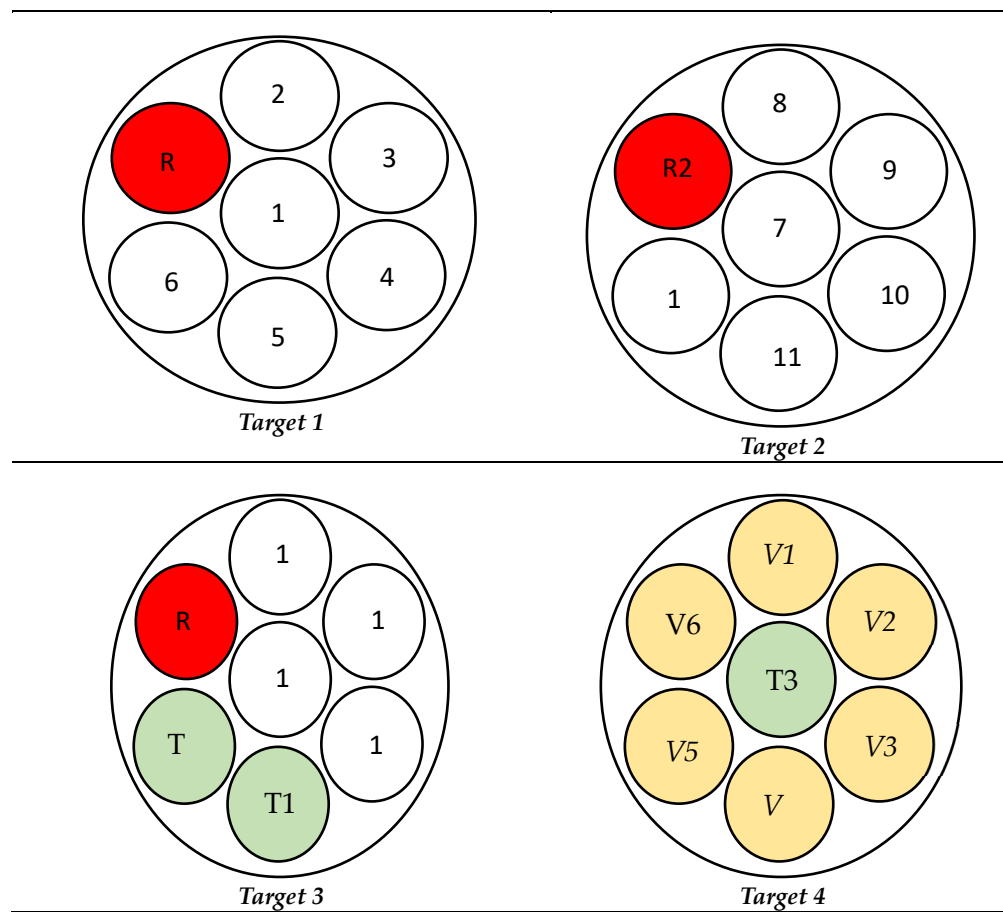


Figure S1. Spiral placement on targets 1 - 4, for Taguchi DOE.

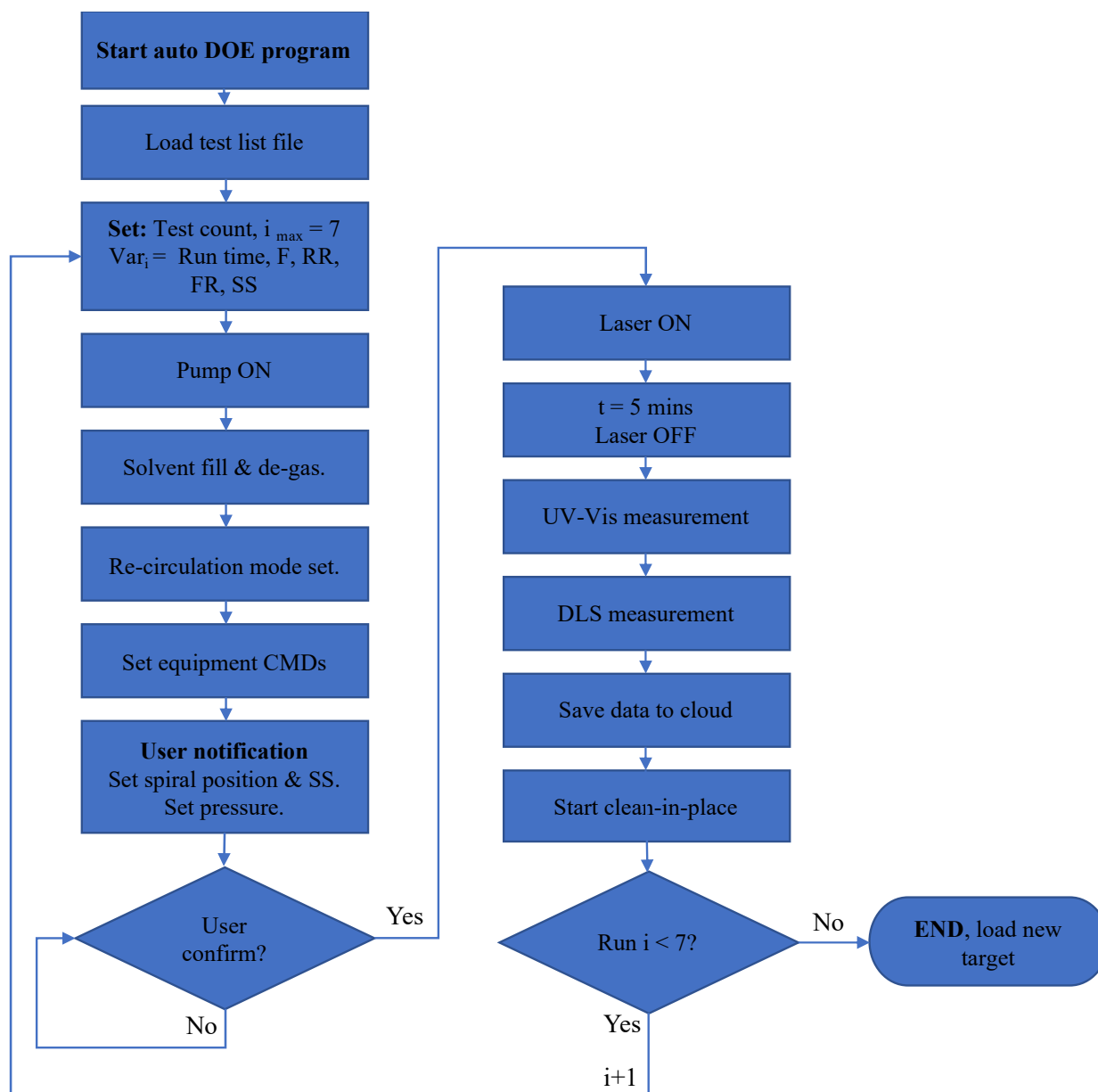


Figure S2. Flow chart of semi-automatic DOE program.

Table S1. Example of automatic experiment table loaded into the automatic LASiS test software.

Step	Run time (min)	Laser Power (%)	Rep rate (Hz)	Period (microS)	Pump Flowrate (rpm)	DLS meas (Y/N)	Uv meas (Y/N)	Ablation state	SetZero dls	Baseline uv
1	5	50	10000	3.5	20	y	y	Recycle	y	y
2	5	70	20000	3.5	45	y	y	Flow-through	y	y
3	5	66	30000	3.5	50	y	y	Recycle	y	y
4	5	82	40000	3.5	77	y	y	Recycle	y	y
5	5	46	50000	3.5	15	y	y	Recycle	y	y
6	5	100	11000	3.5	23	y	y	Recycle	y	y
7	5	94	10000	3.5	82	y	y	Recycle	y	y

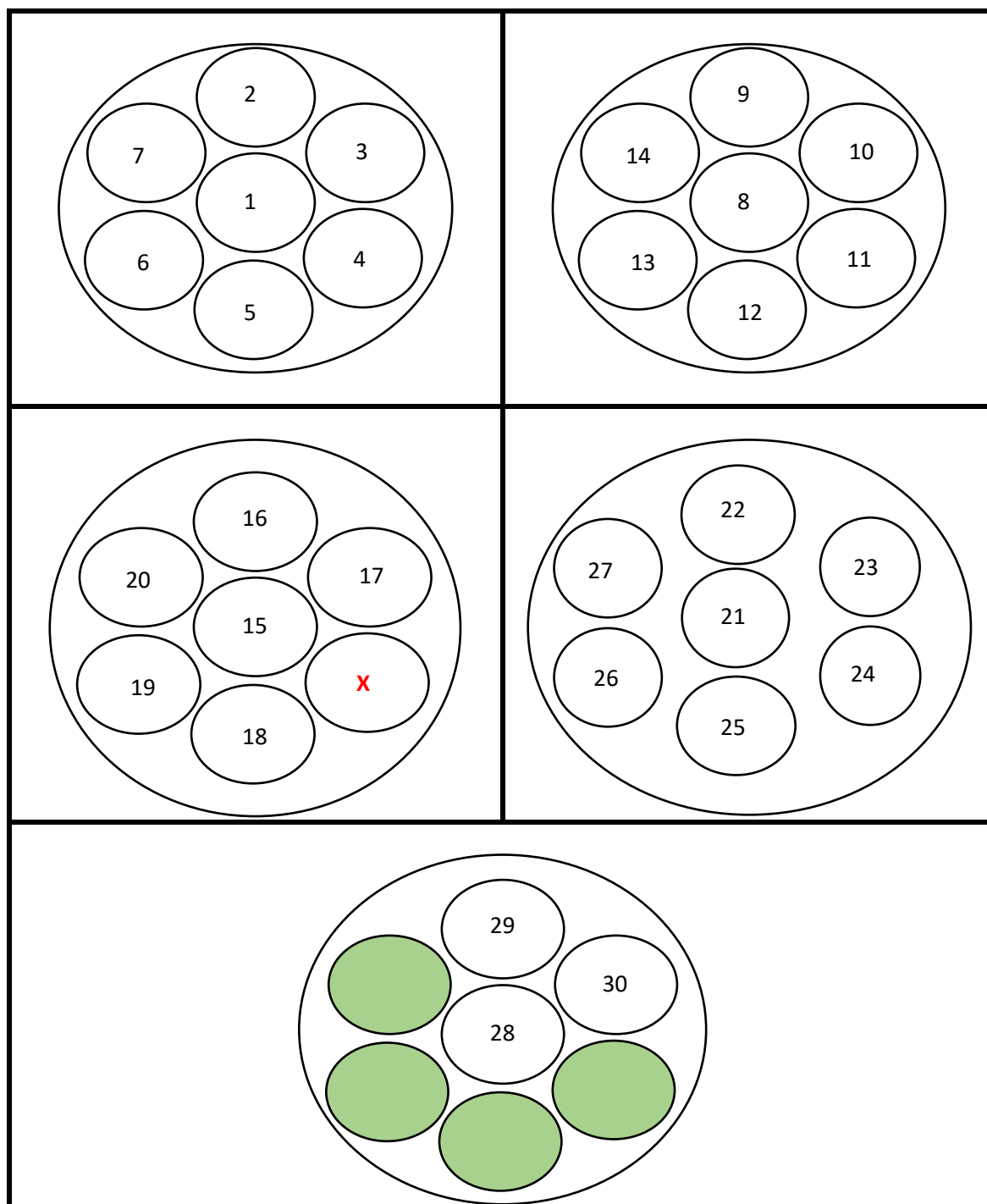


Figure S3. Full-factorial experiments target layout.

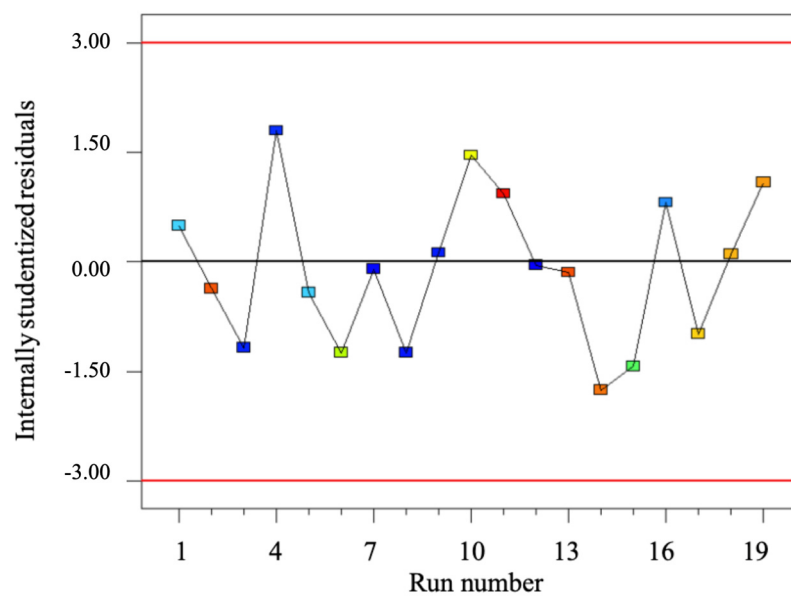


Figure S4. Plot of residuals vs run number for Taguchi colloid absorption modelling.

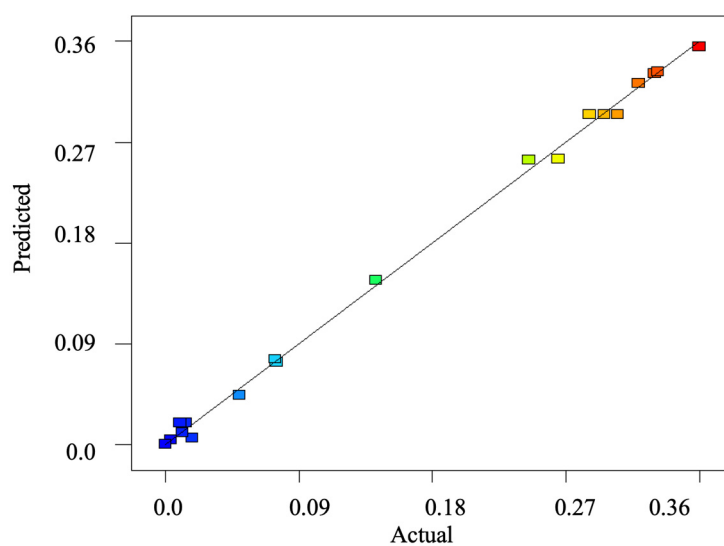


Figure S5. Plot of model prediction vs experimental absorbance values (A.U.) for Taguchi colloid absorption modelling.

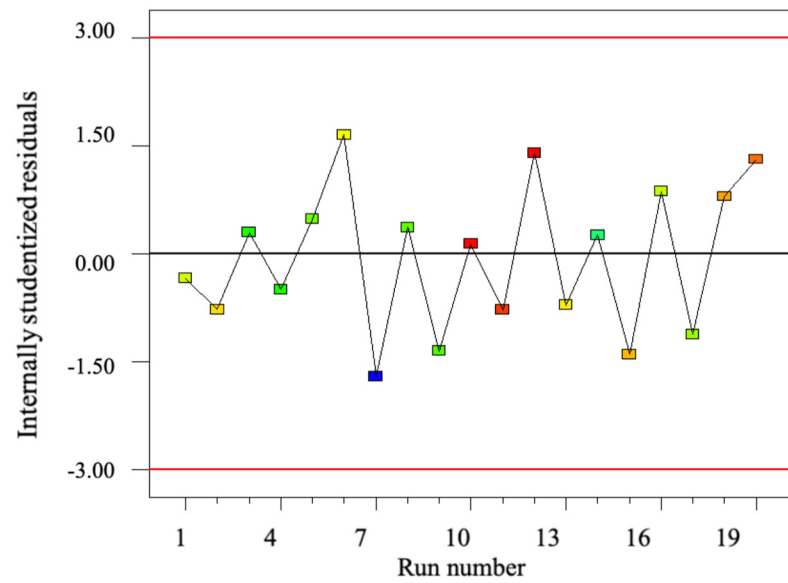


Figure S6. Chart of residuals vs run number for at-line nano colloid size modelling.

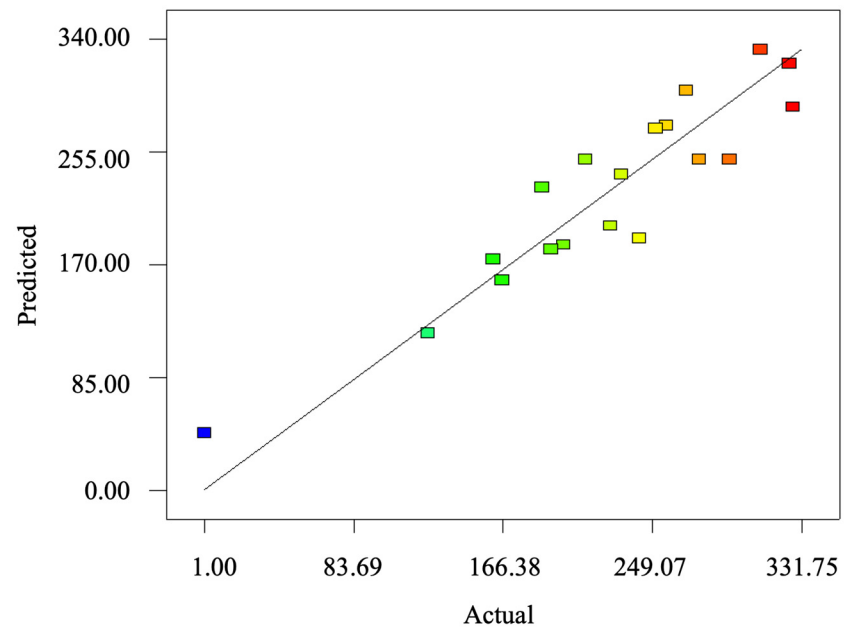


Figure S7. Plot of model predicted size vs experimental size measurement.

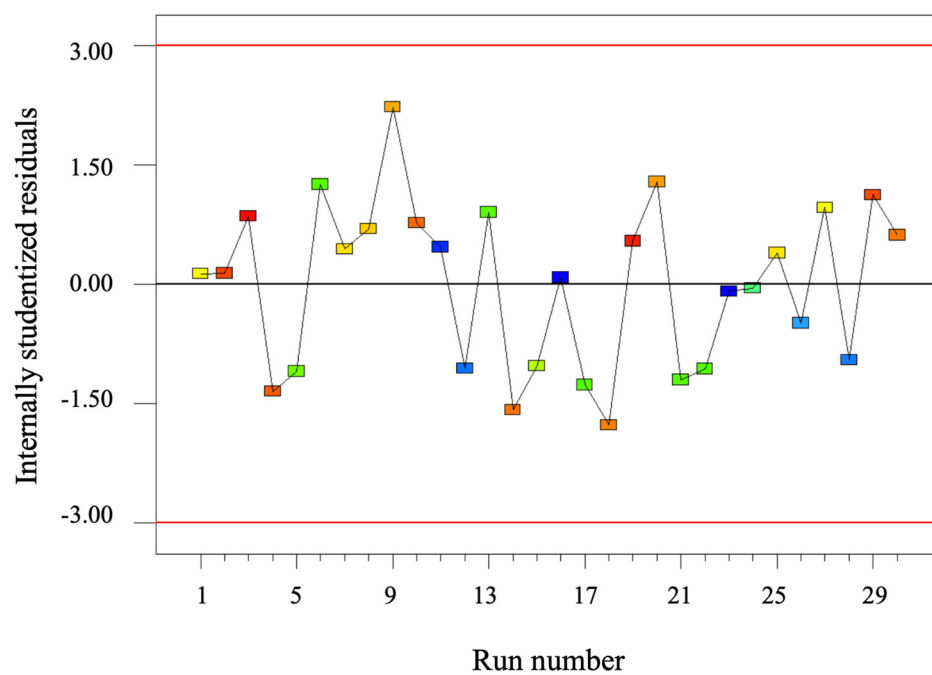


Figure S8. Chart of residuals vs run number FFD colloid absorption modelling.