

Supplementary Materials: Membrane Fouling Characteristics of a Side-Stream Tubular Anaerobic Membrane Bioreactor (AnMBR) Treating Domestic Wastewater

Nsanzumukiza Martin Vincent, Juan Tong, Dawei Yu, Junya Zhang and Yuansong Wei

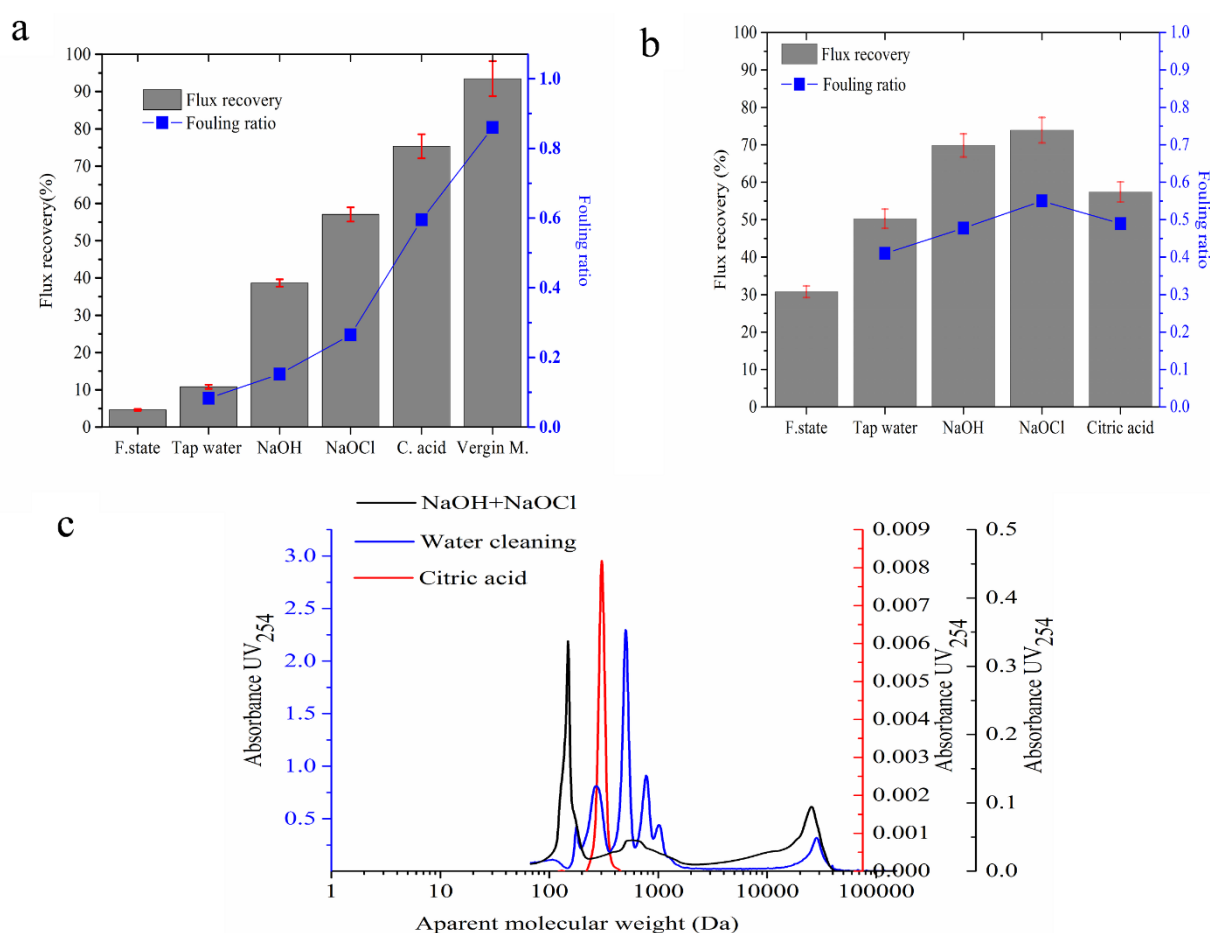


Figure S1. Subsequent chemical cleaning and flux recovery (a), chemical cleaning comparison with different cleaning reagents ability (b), Gel permeation chromatography responses of organic matters in foulants (c).

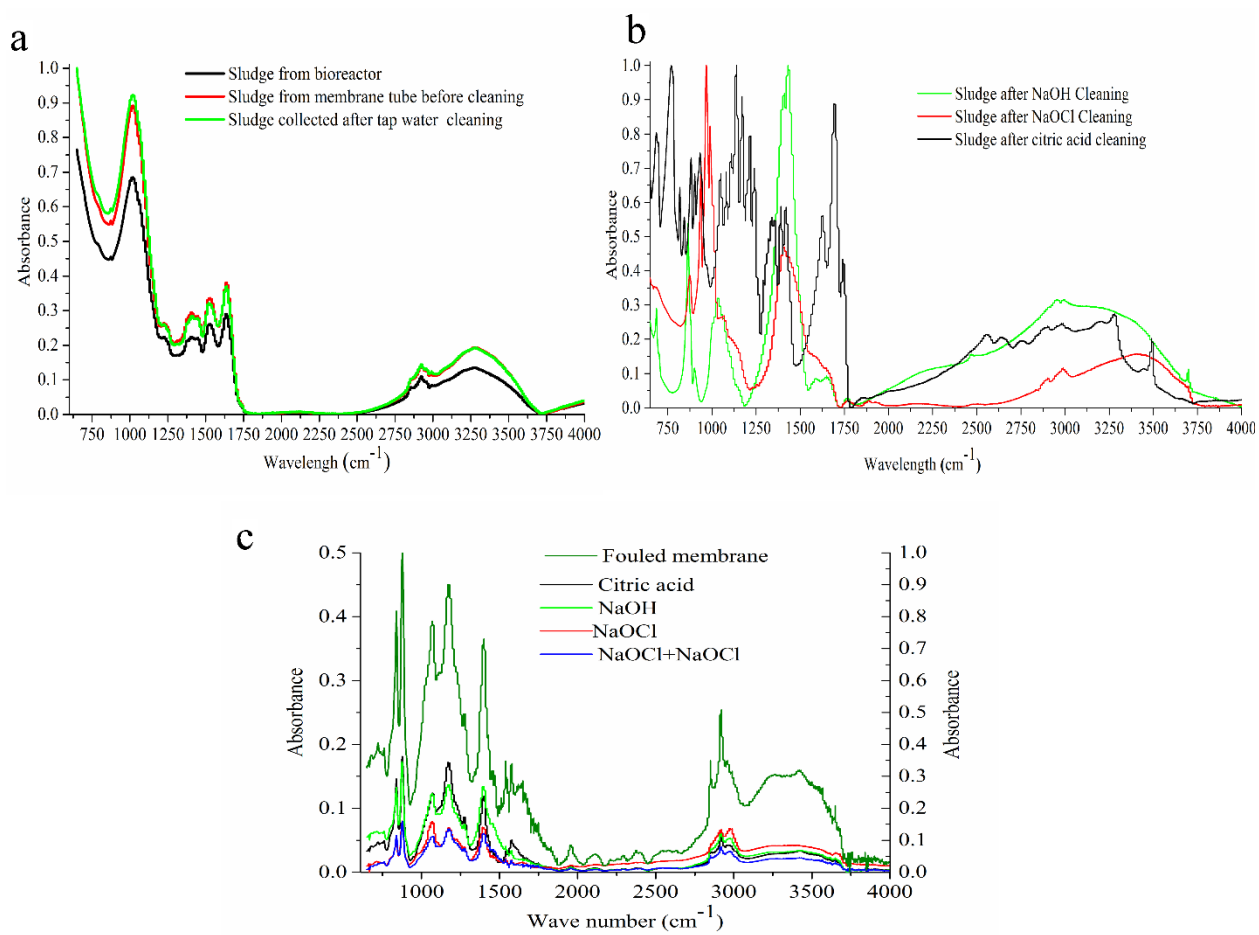


Figure S2. FT-IR spectra of (a): AnMBR sludge, (b): Sludge from cleaned membrane with (NaOH and NaClO), NaOH and Citric acid, (c): fouled membrane layer and Cleaned membrane with (NaOH+ NaClO), NaOH and Citric acid.

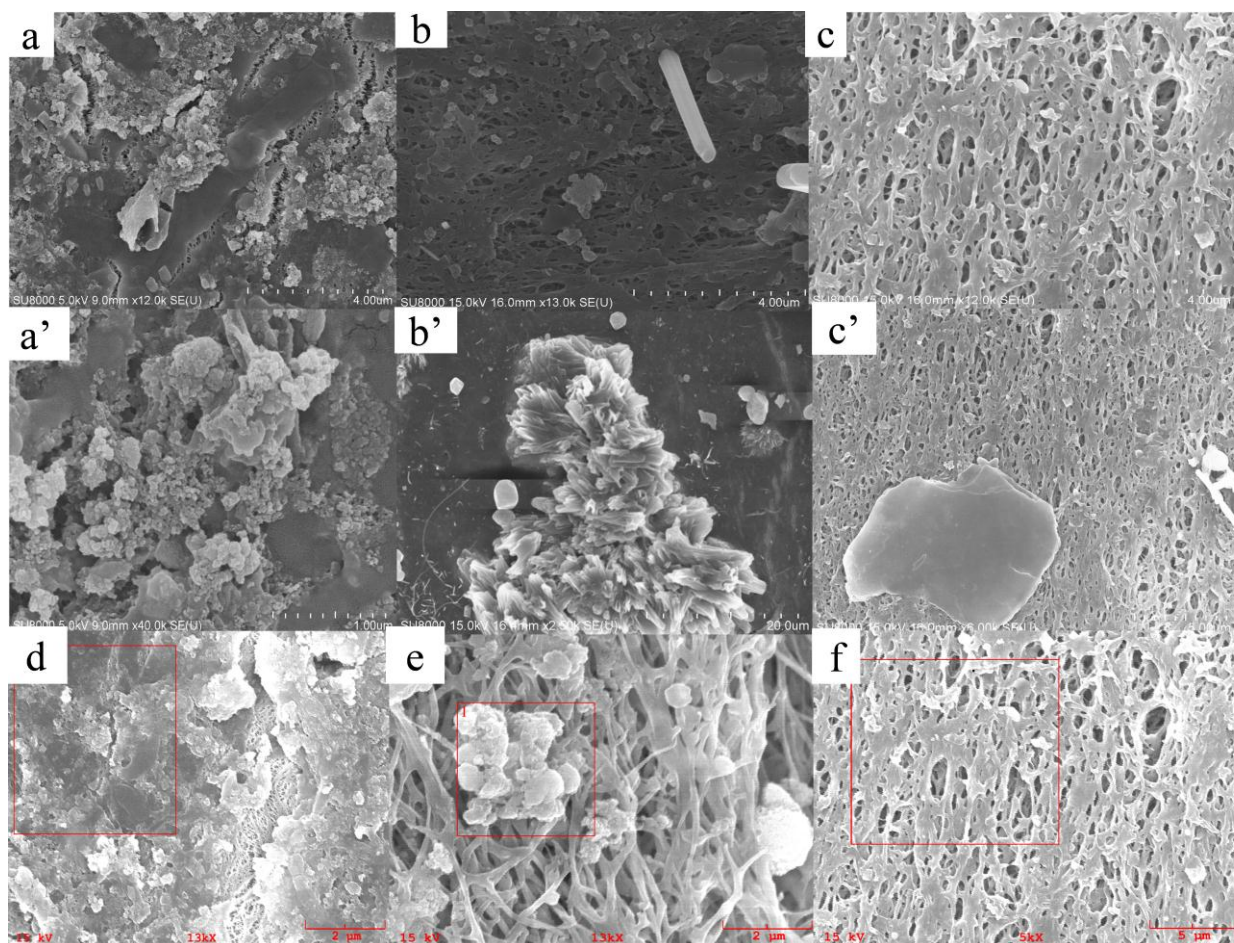


Figure S3. SEM of fouled membrane (a, a'), alkaline cleaned membrane (b, b') and citric acid cleaned membrane (c, c') and SEM-EDS of fouled membrane (d), alkaline cleaned membrane (e) and citric acid cleaned membrane (f).