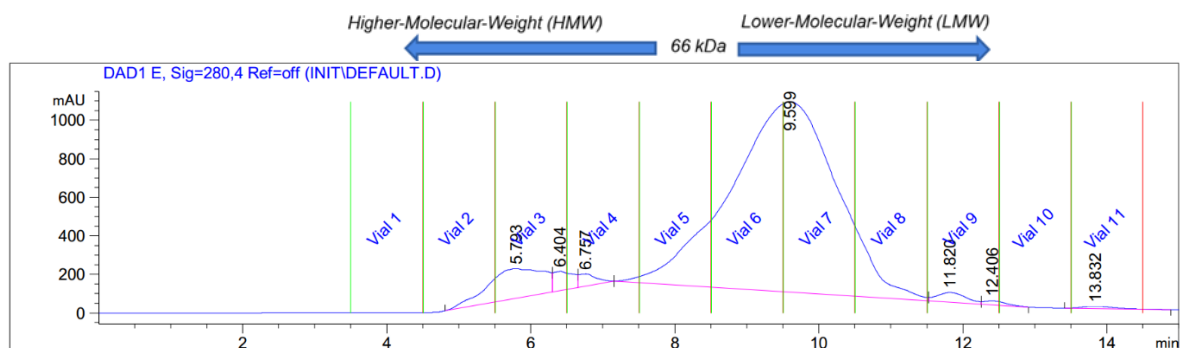


Supplementary Materials:



**Figure S1.** Chromatogram of HPLC-SEC using proteins from the *M. pyrifera* aqueous extract. Lines indicate the time-based fraction recovery of 11 fractions obtained from the elution profile.

**Table S1.** Characterization of CuO-NPs average size distribution, zeta potential, and polydispersity index (PDI) by Dynamic Light Scattering (DLS).

Fraction	Average Size Distribution (nm)	Polydispersity Index (PDI)	Z-Potential (mV)
1	-	-	-
2	-	-	-
3	151.60 ± 0.23	0.12 ± 0.01	-62.1 ± 1.29
4	134.60 ± 0.47	0.13 ± 0.02	-51.7 ± 2.50
5	443.50 ± 11.62	0.48 ± 0.04	-54.8 ± 1.80
6	96.14 ± 1.06	0.12 ± 0.01	-44.9 ± 0.51
7	155.30 ± 3.21	0.26 ± 0.04	-47.8 ± 0.76
8	114.00 ± 6.48	0.24 ± 0.03	-28.5 ± 4.62
9	249.10 ± 74.25	0.50 ± 0.15	-26.1 ± 4.30
10	-	-	-
11	-	-	-