

Summary of supporting information

Number of Figures: 3

COTENTS

Figures

Fig. S1. Structural changes of TTA.

Fig. S2. Three DES extractants with different ratios were synthesized and three extractants were added to kerosene with the same volume as the extractant.

Fig. S3. The DES extractant (molar ratio: HTTA/TOPO=2/1) was used. The composition of the aqueous phase was 25ppm LiCl and 0.1M NH₄Cl. The dosage of single HTTA or TOPO is consistent with that of DES extractant.

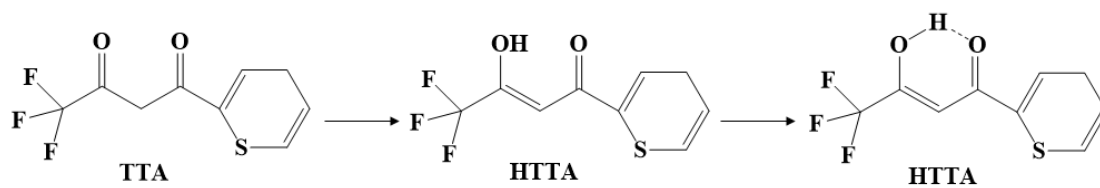


Fig. S1. Structural changes of TTA.

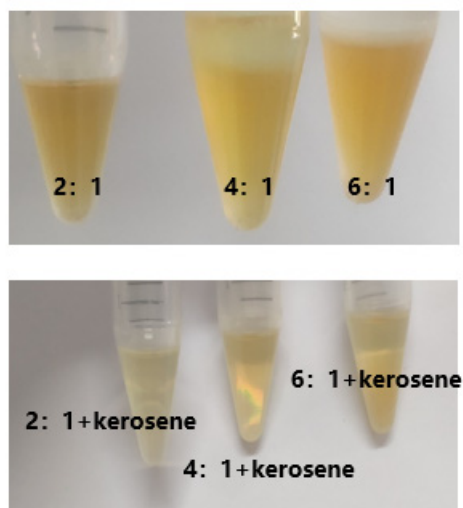


Fig. S2. Three DES extractants with different ratios were synthesized and three extractants were added to kerosene with the same volume as the extractant.

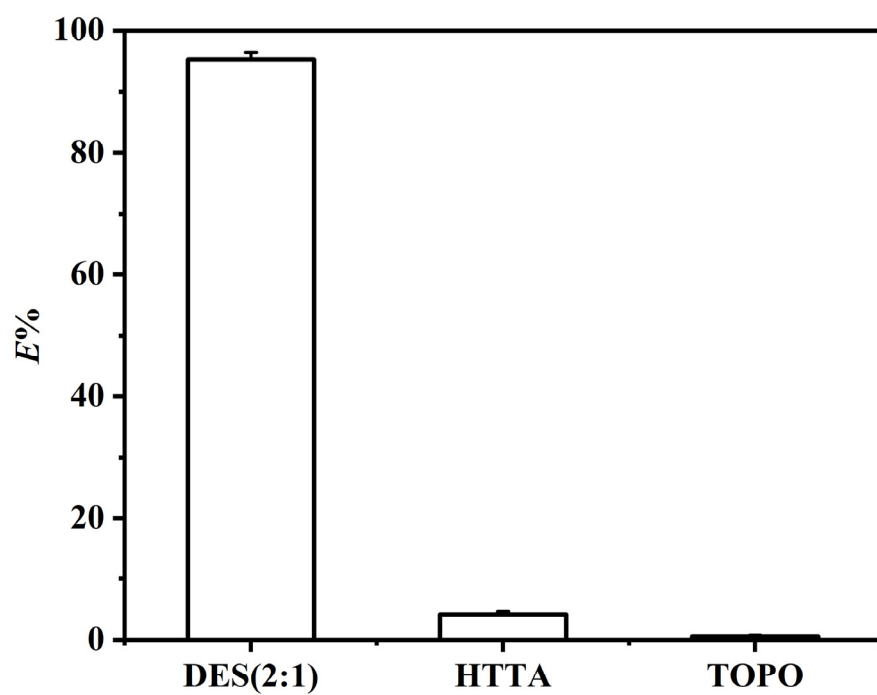


Fig. S3. The DES extractant (molar ratio: HTTA/TOPO=2/1) was used. The composition of the aqueous phase was 25ppm LiCl and 0.1M NH₄Cl. The dosage of single HTTA or TOPO is consistent with that of DES extractant.