

**Figure S1.** Mass spectrum of (a) Ferulic acid, (b) Gallic acid, (c) Caffeic acid, (d) Quercetin, (e) Kaempferol glycoside, (f) Quercetin glycoside (Hyperoside), (g) Catechin glucoside, (h) Catechin gallate, (i) Epicatechin gallate, (j) Epigallocatechin gallate, (k) Chlorogenic acid, (l) Procyanidin dimer, (m) Procyanidin dimer, (n) Procyanidin trimer, (o) Ellagic acid, (p) Rutin, (q) Taxifolin, (r) Oleuropein, (s) Protocatechuic acid, (t) Methyl ellagic acid, (u) catechin, (v) Chicoric acid, (w) Caffeoylquinic acid.

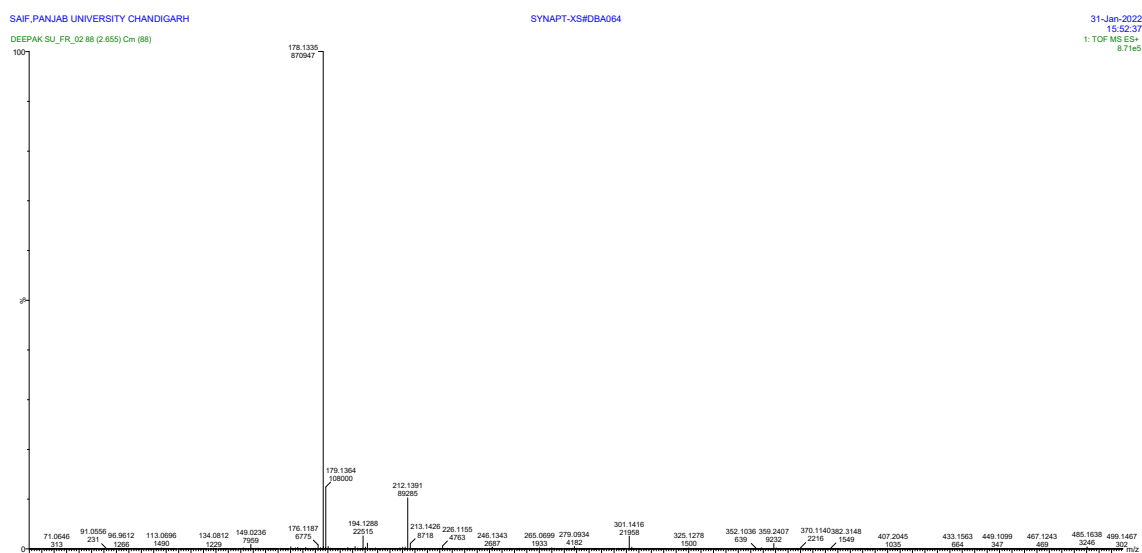


Figure S1 (a).

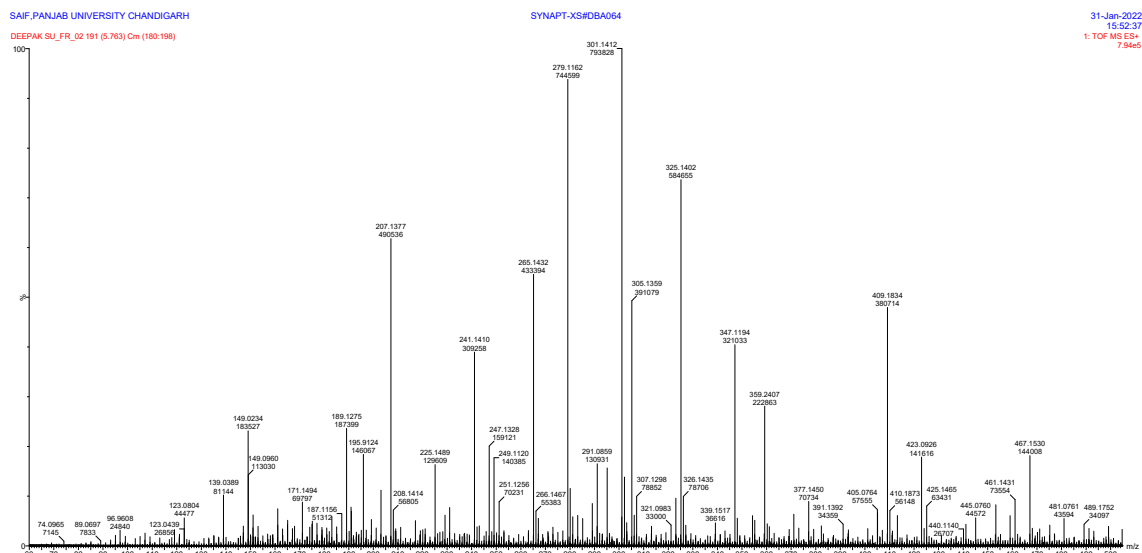
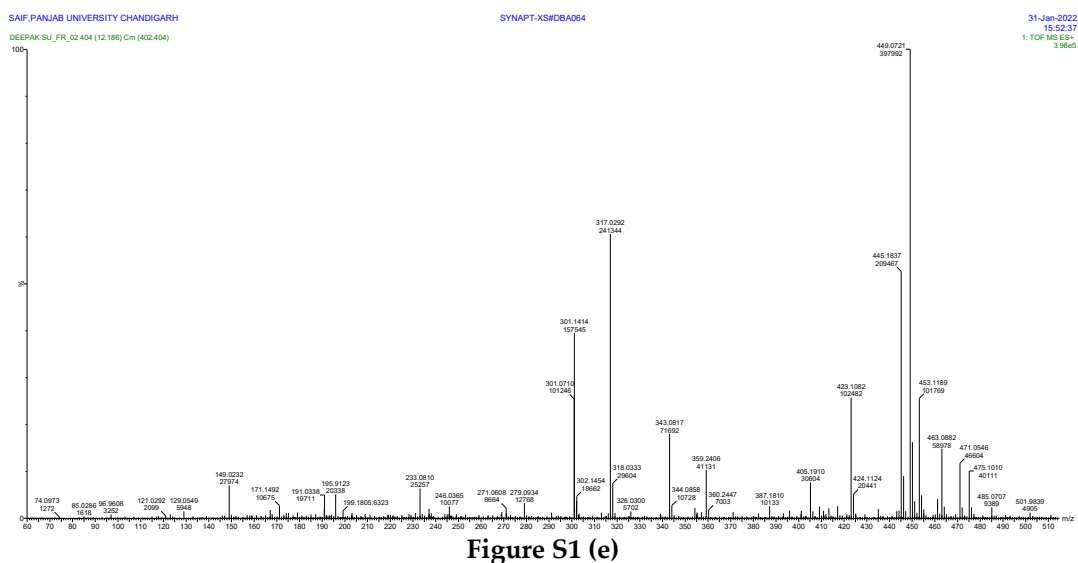
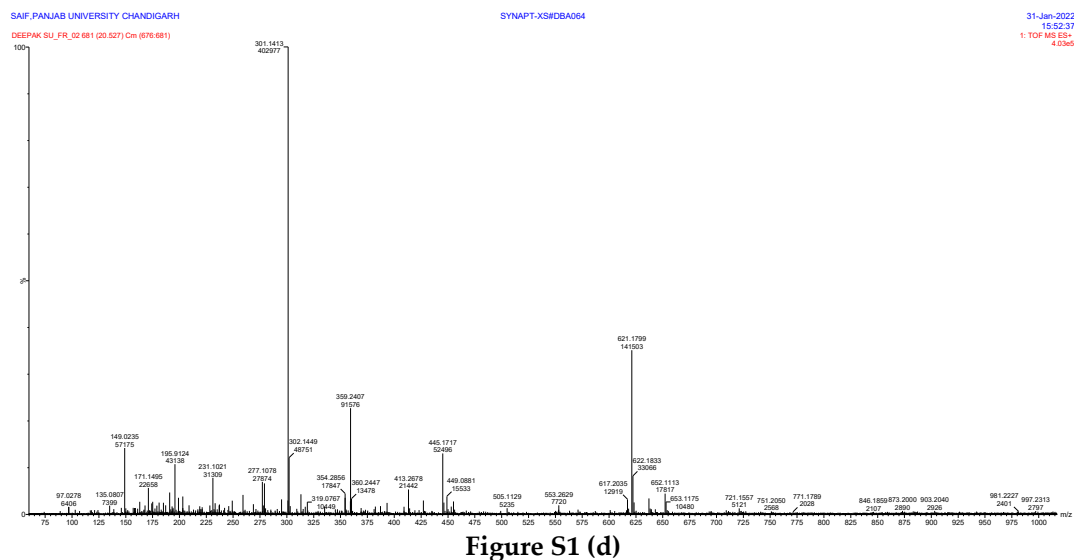
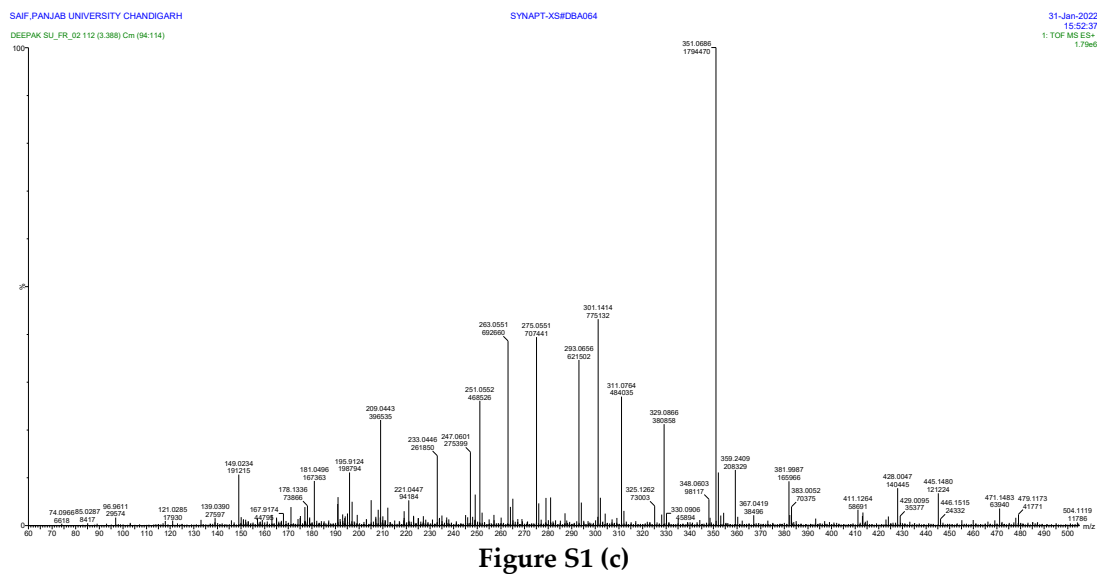
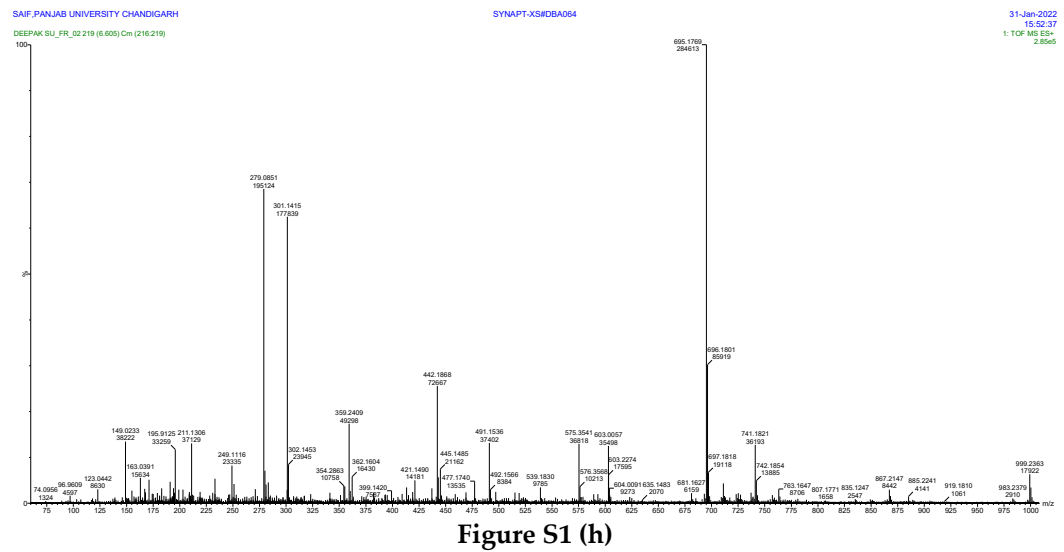
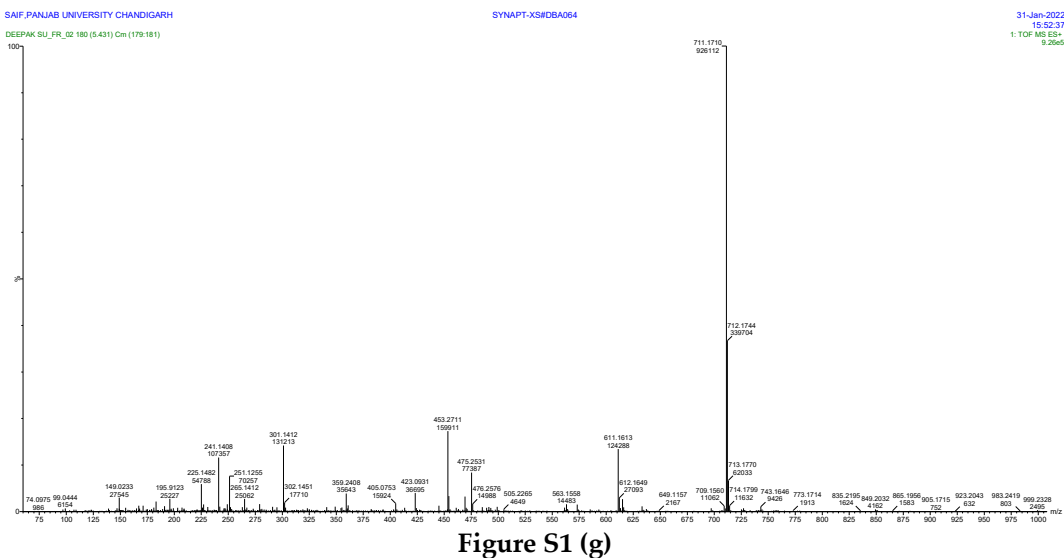
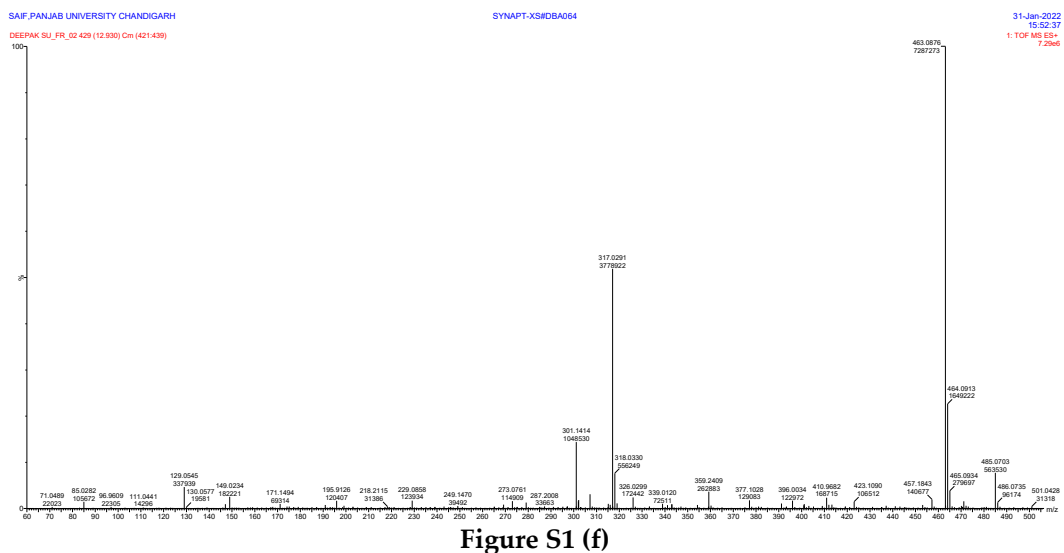


Figure S1 (b).





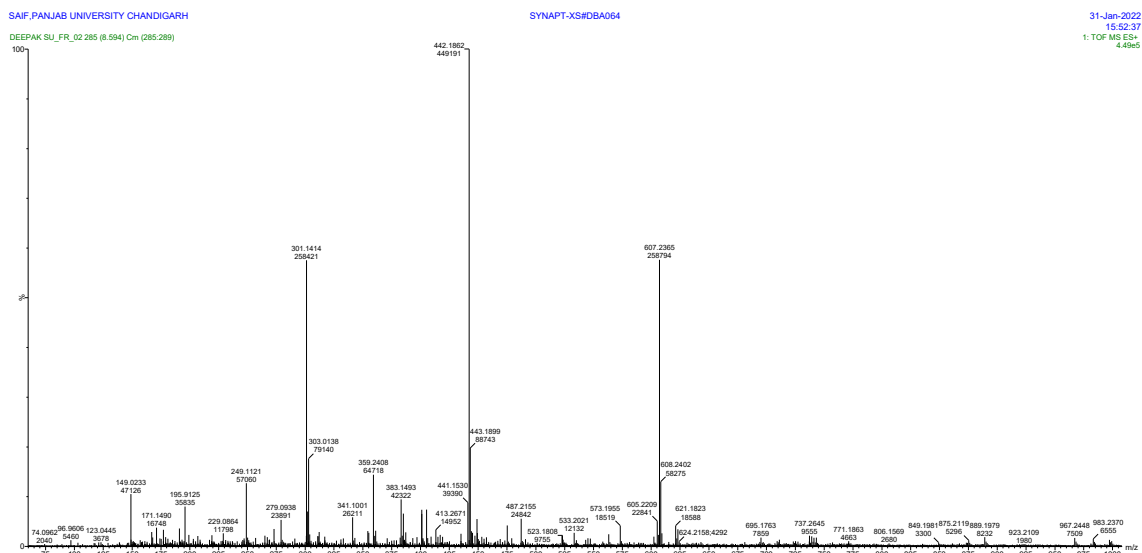


Figure S1 (i)

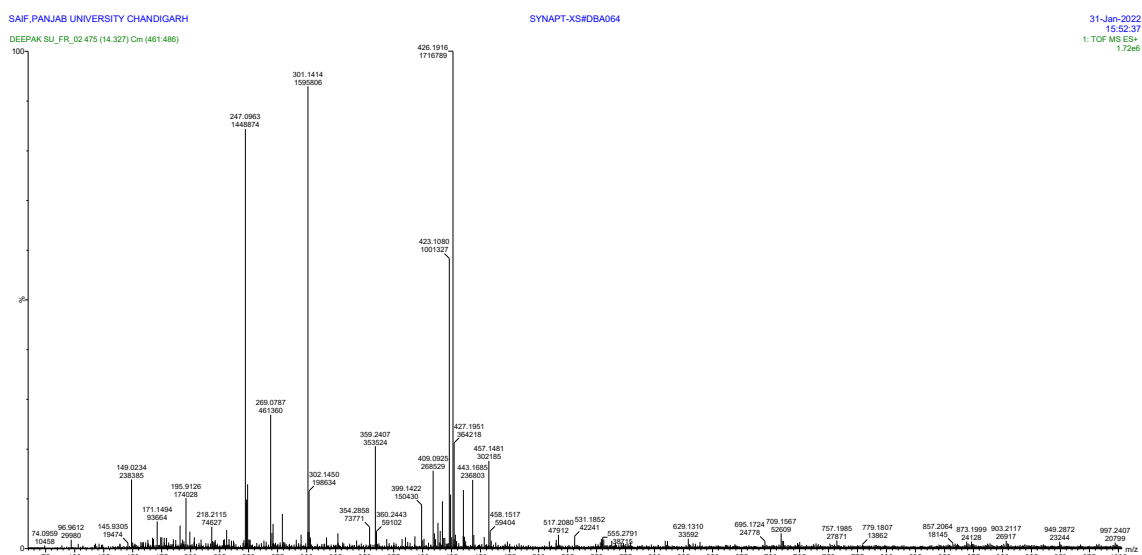


Figure S1 (j)

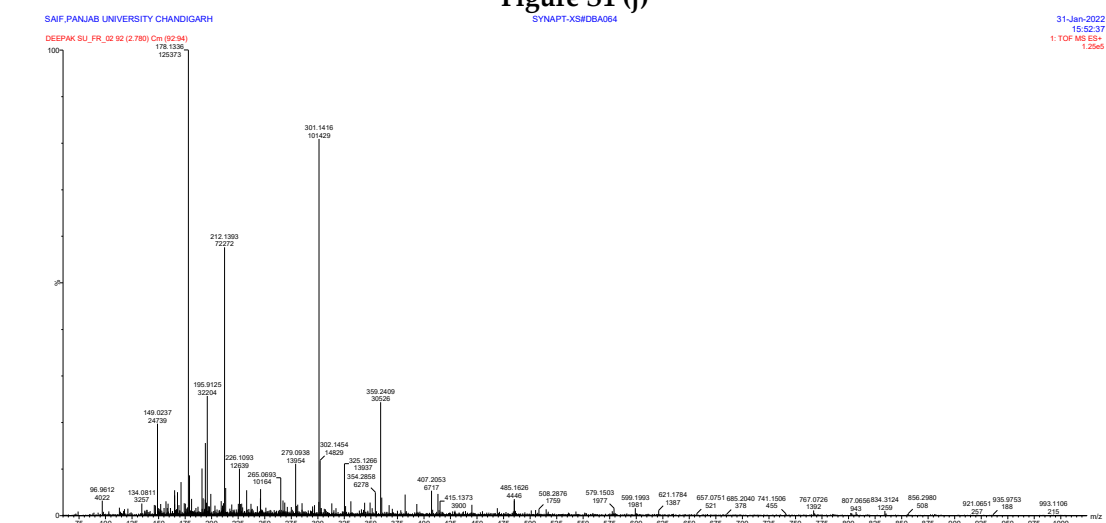


Figure S1 (k)



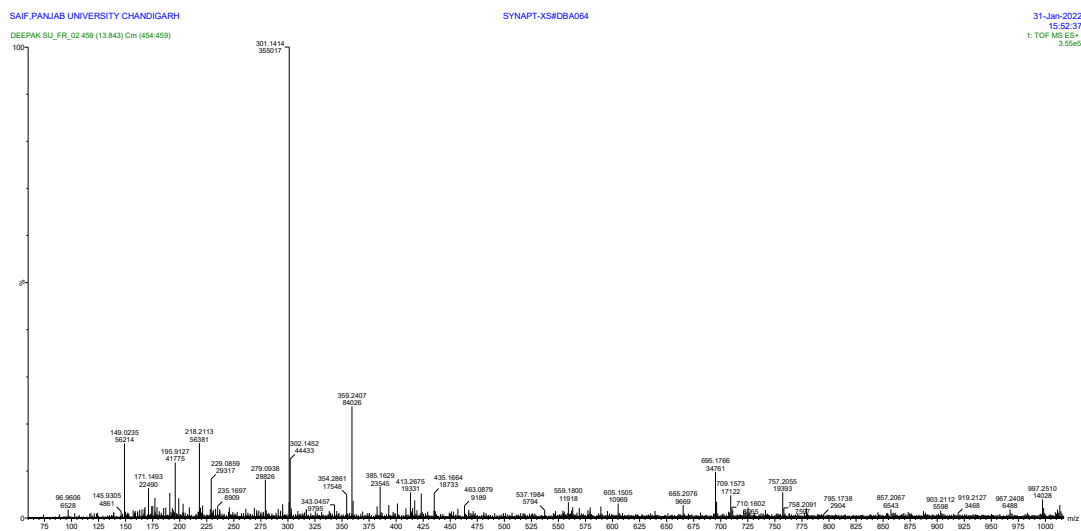


Figure S1 (o)

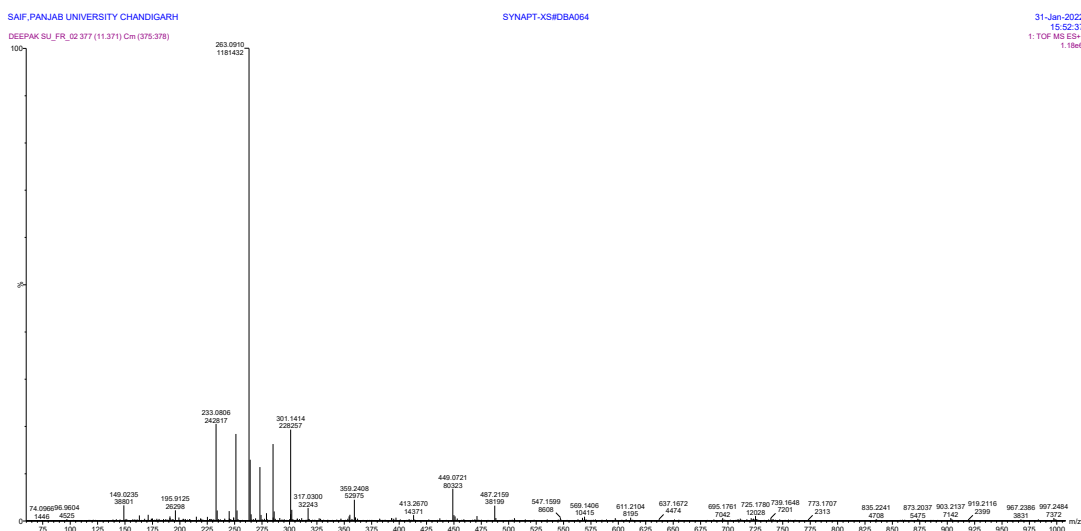


Figure S1 (p)

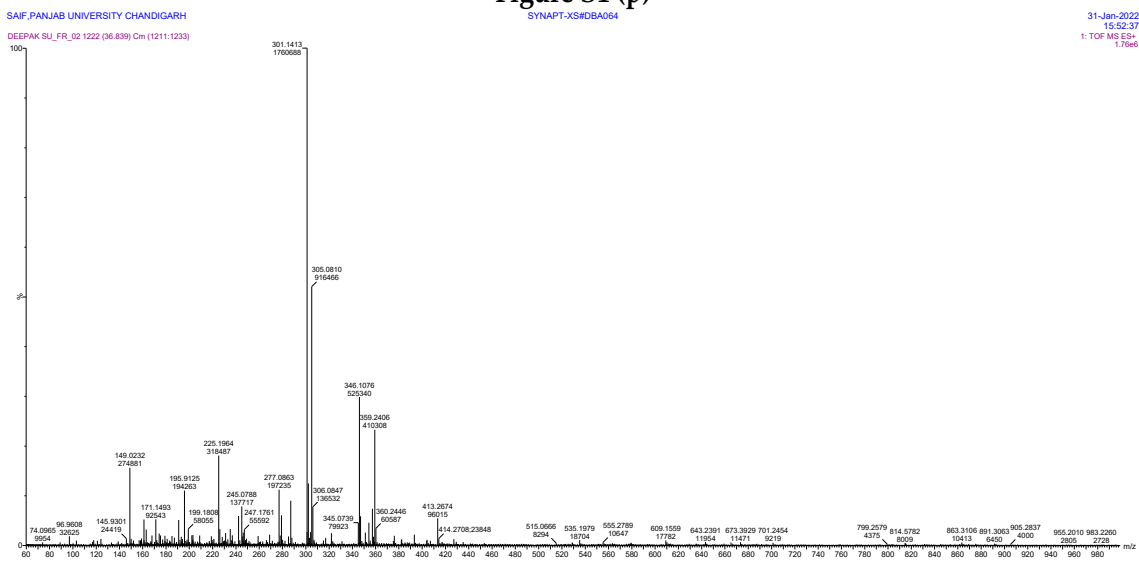
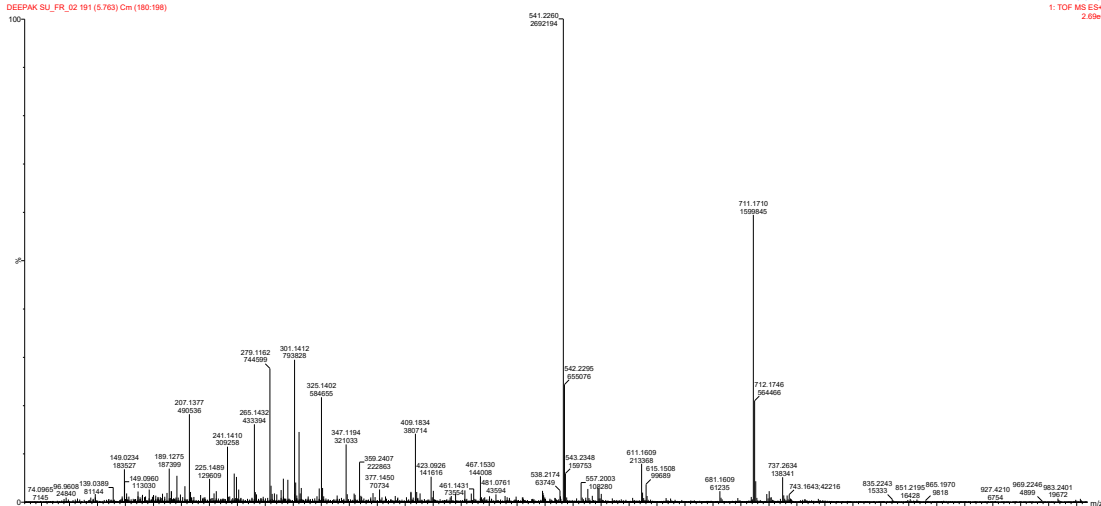
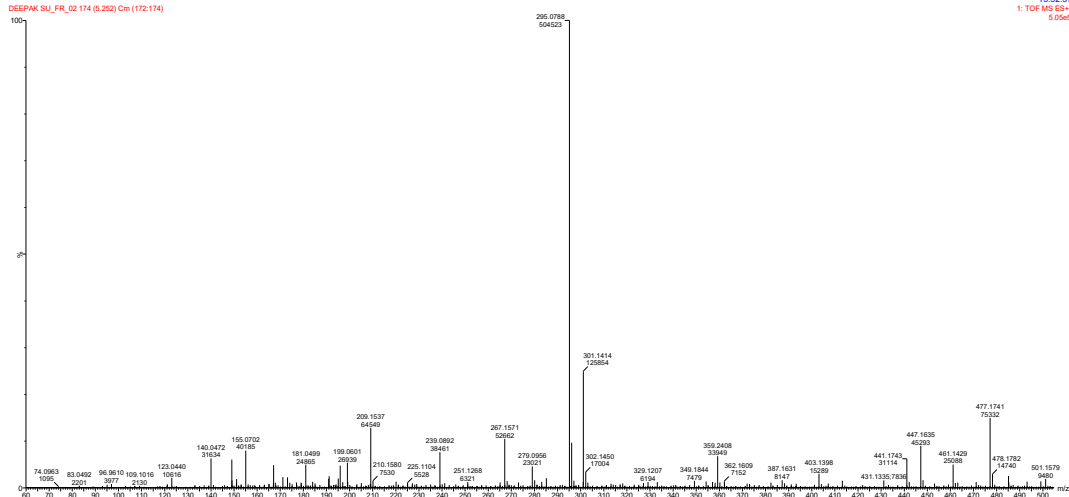


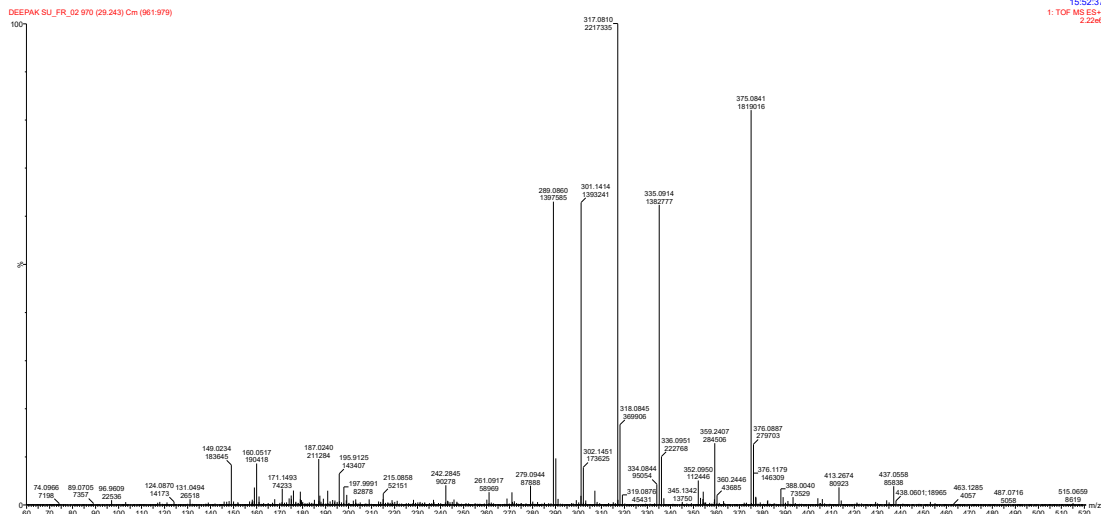
Figure S1 (q)



**Figure S1 (r)**



**Figure S1 (s)**



**Figure S1 (t)**

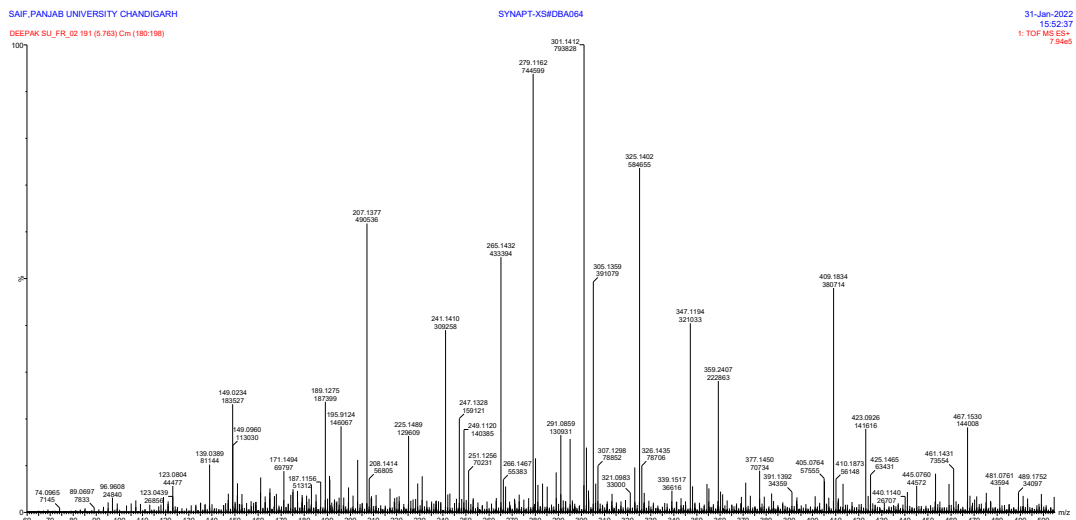


Figure S1 (u)

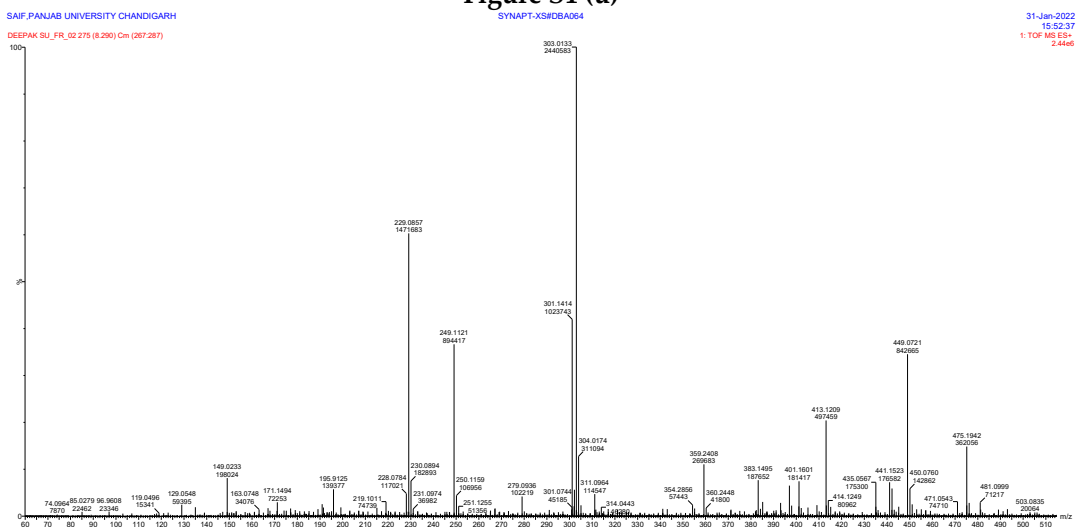


Figure S1 (v)

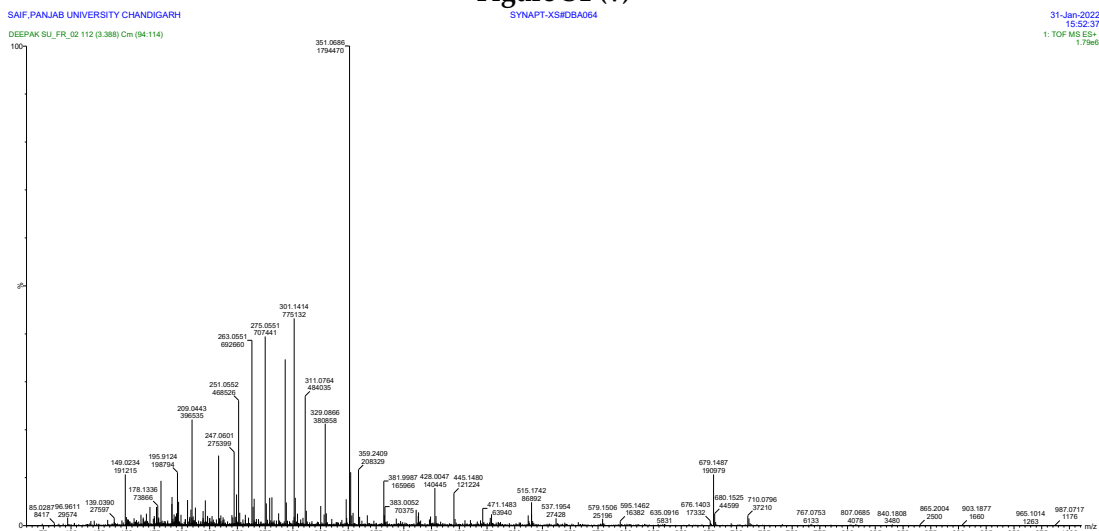


Figure S1 (w)