

Supporting Information

Synthesis and characterization of amorphous $\text{SiO}_2\text{-Fe}_x\text{O}_y$ materials starting from iron sulfate for preliminary studies of CO_2 adsorption

Cătălin IANĂȘI¹, Bogdan PASCU^{2,3}, Nicoleta NEMEȘ³ and Alexandru POPA^{1,*}

¹Coriolan Drăgulescu" Institute of Chemistry, Bv. Mihai Viteazul, No. 24, RO-300223, Timișoara, Romania

²Politehnica University Timișoara, Faculty of Industrial Chemistry and Environmental Engineering, Victoriei Square, no. 2, Timișoara, 300006, România

³Renewable Energy Research Institute, Politehnica University Timișoara, 138 Gavril Musicescu Street, 300501 Timișoara, Romania

* Correspondence: author: alpopa_tim2003@yahoo.com

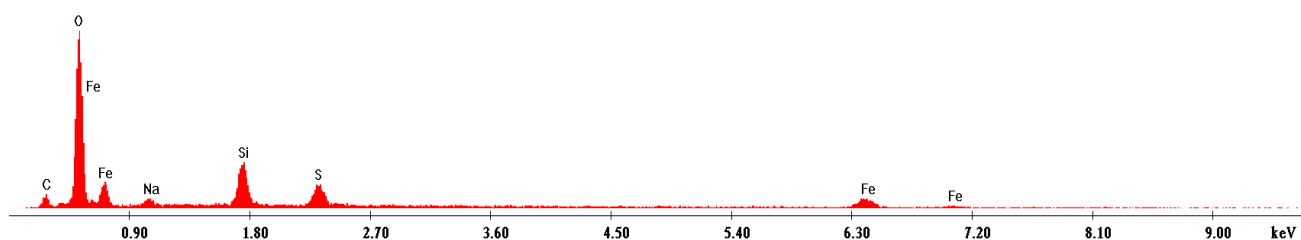


Figure S1. a. EDS images for the $\text{SiO}_2\text{-Fe}_x\text{O}_y$ sample.

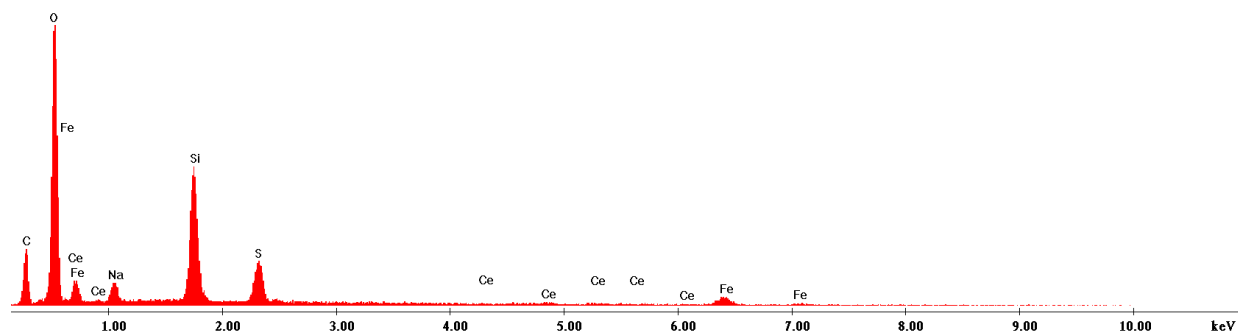


Figure S1. b. EDS images for the $\text{SiO}_2\text{-Fe}_x\text{O}_y\text{-Ce}$ sample

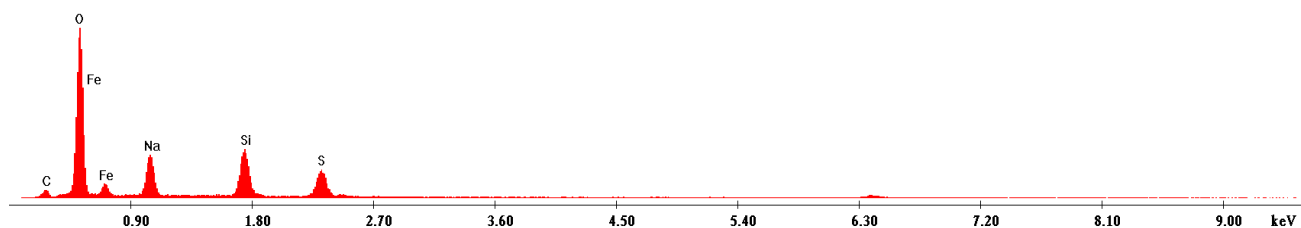


Figure S1. c. EDS images for the sample $\text{SiO}_2\text{-Fe}_x\text{O}_y\text{-Li}$.

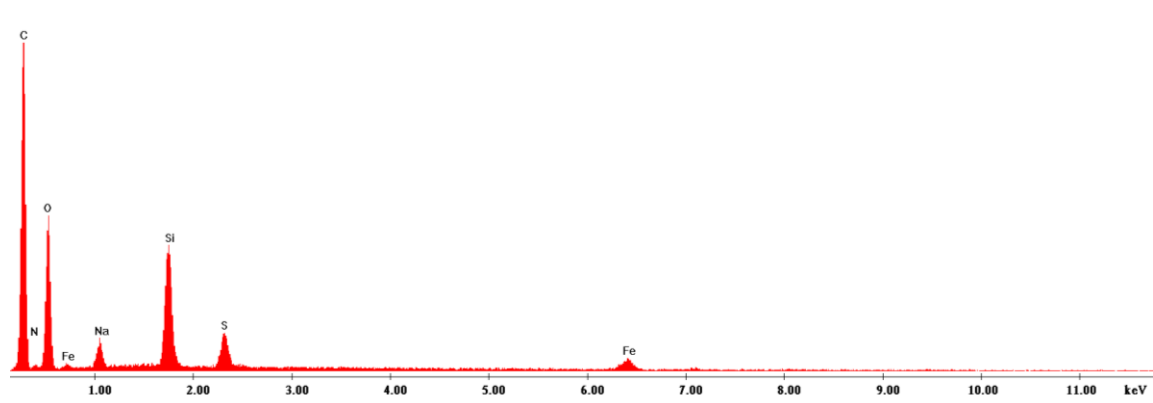


Figure S2. a. EDS images for the sample SiO₂-Fe_xO_y – APTES

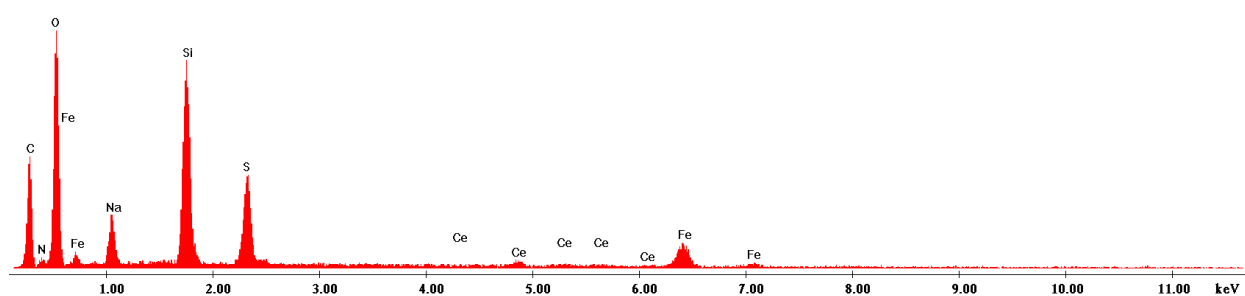


Figure S2. b. EDS images for sample SiO₂-Fe_xO_y – Ce-APTES.

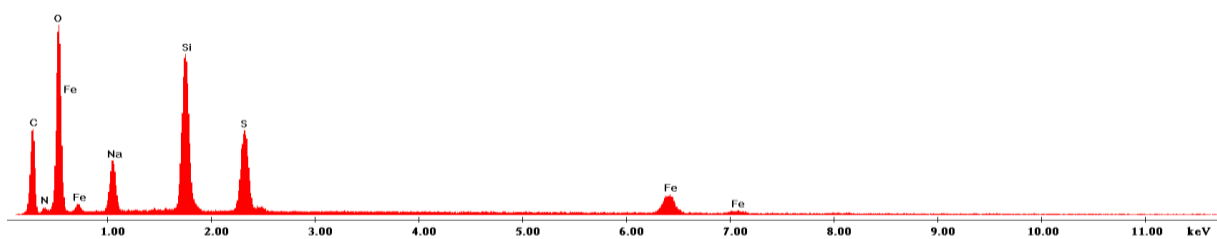


Figure S2. c. EDS images for the SiO₂-Fe_xO_y – Li- APTES.