

Figure S1. Analysis of polysaccharide extract of Epimedium by HPLC

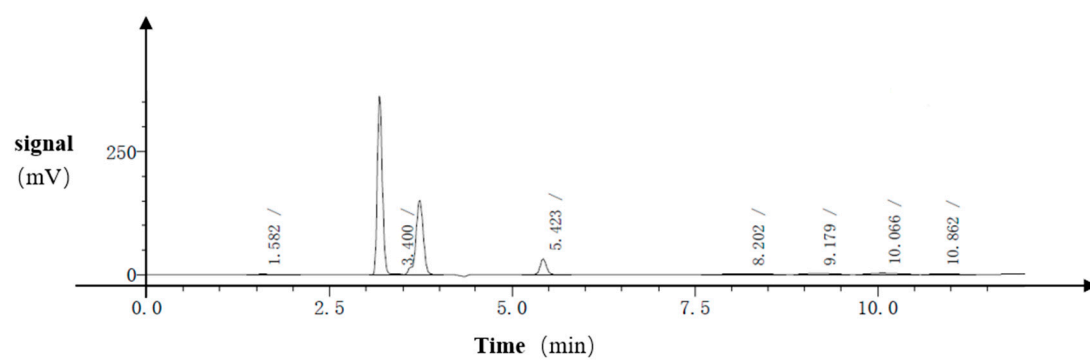
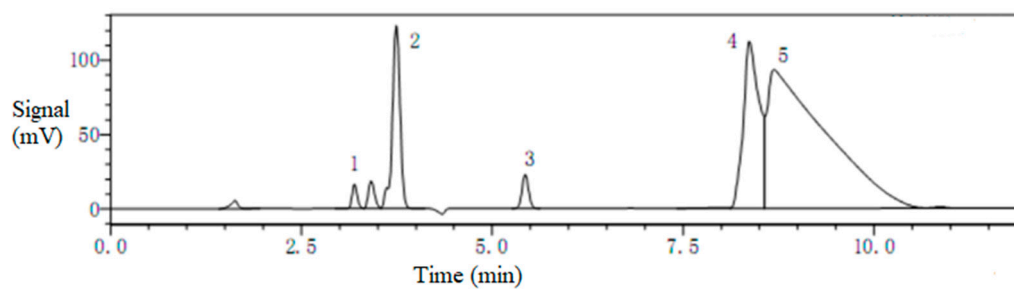


Figure S2. Chromatogram of mixed standard

According to the polarity of the standard

glucose	galactose	mannose	Galacturonic acid	rhamnose
Peak1	Peak2	Peak3	Peak4	Peak5

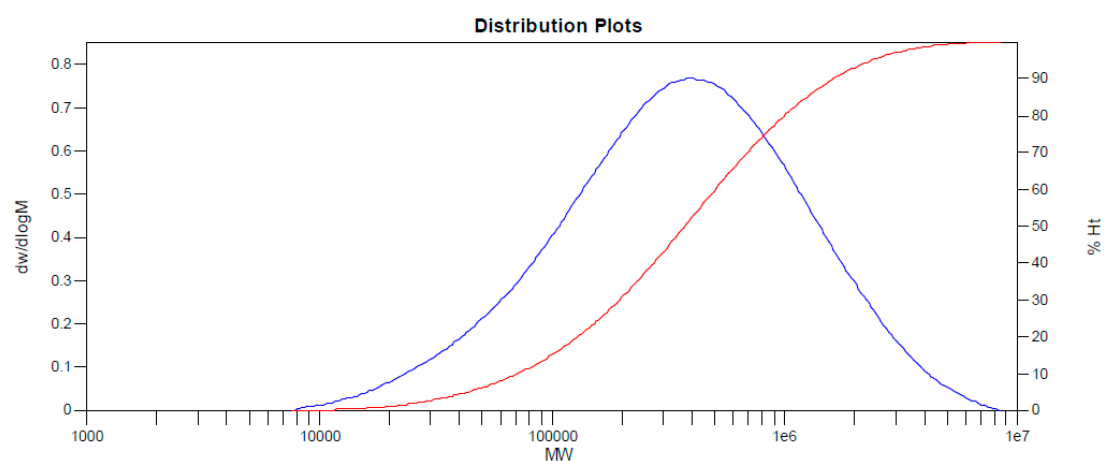
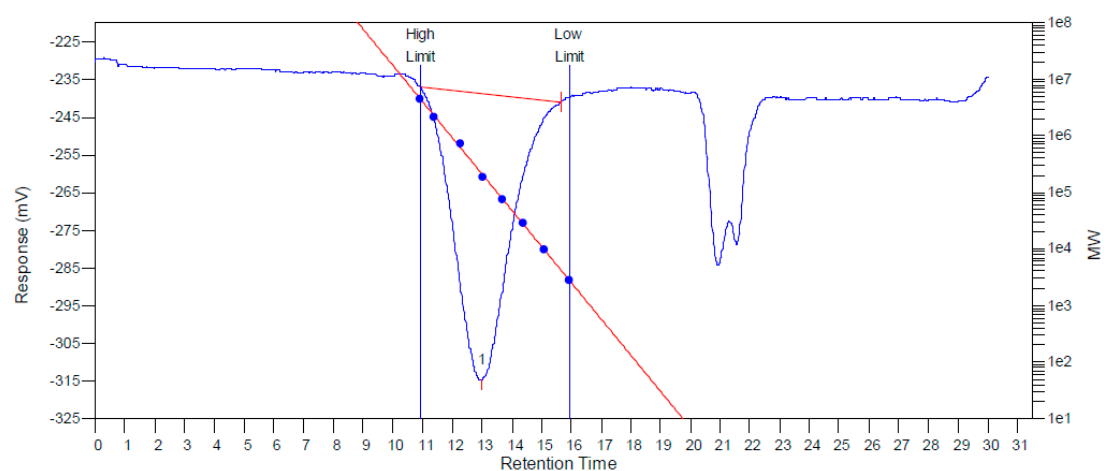


#### Peak table

Detector A 190nm

Peak number	Retention time	Area	Area%	Altitude	Altitude%	Concentration
1	1.630	37937	0.481	5616	1.430	0.000
2	3.195	77863	0.986	16205	4.126	-0.000
3	3.414	106268	1.346	18582	4.731	0.000
4	3.743	873906	11.071	123019	31.319	0.004
5	5.431	136885	1.734	22923	5.836	0.000
6	7.950	12316	0.156	464	0.118	0.000
7	8.368	1636238	20.728	112080	28.534	0.000
8	8.689	5004895	63.403	93163	23.718	0.000
9	10.866	7530	0.095	737	0.188	0.000
SUM		7893838	100.000	392789	100.000	

Figure S3. The data of Molecular weight determinations.



#### MW Averages

Peak No	Mp	Mn	Mw	Mz	Mz+1	Mv	PD
1	397460	165318	661479	1730311	3017692	551748	4.00125

#### Processed Peaks

Peak No	Name	Start RT (mins)	Max RT (mins)	End RT (mins)	Pk Height (mV)	% Height	Area (mV.secs)	% Area
1		10.90	12.98	15.63	-75.9928	0	9247.22	100