

Developmental Therapeutics Program

NSC: D-824349 / 1

Conc: 1.00E-5 Molar

Test Date: Aug 17, 2020

One Dose Mean Graph

Experiment ID: 2008OS33

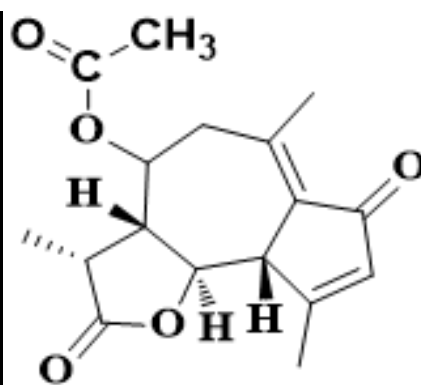
Report Date: Nov 21, 2021

Panel/Cell Line

Growth Percent

Mean Growth Percent - Growth Percent

| | |
|----------------------------|--------|
| Leukemia | |
| CCRF-CEM | 91.62 |
| HL-60(TB) | 94.44 |
| K-562 | 97.47 |
| MOLT-4 | 85.07 |
| RPMI-8226 | 103.27 |
| SR | 89.04 |
| Non-Small Cell Lung Cancer | |
| A549/ATCC | 96.16 |
| EKVX | 89.08 |
| HOP-62 | 108.14 |
| NCI-H226 | 96.78 |
| NCI-H23 | 91.22 |
| NCI-H322M | 96.85 |
| NCI-H460 | 101.77 |
| NCI-H522 | 89.33 |
| Colon Cancer | |
| COLO 205 | 110.81 |
| HCC-2998 | 108.14 |
| HCT-116 | 97.00 |
| HCT-15 | 101.36 |
| HT29 | 109.71 |
| KM12 | 99.88 |
| SW-620 | 105.67 |
| CNS Cancer | |
| SF-268 | 98.83 |
| SF-295 | 103.01 |
| SF-539 | 98.82 |
| SNB-19 | 95.29 |
| SNB-75 | 83.55 |
| U251 | 101.66 |
| Melanoma | |
| LOX IMVI | 89.20 |
| MALME-3M | 102.61 |
| M14 | 92.52 |
| MDA-MB-435 | 98.81 |
| SK-MEL-2 | 103.63 |
| SK-MEL-28 | 100.88 |
| SK-MEL-5 | 97.78 |
| UACC-257 | 93.02 |
| UACC-62 | 89.15 |
| Ovarian Cancer | |
| IGROV1 | 100.67 |
| OVCAR-3 | 111.32 |
| OVCAR-4 | 106.24 |
| OVCAR-5 | 96.34 |
| OVCAR-8 | 99.84 |
| NCI/ADR-RES | 93.33 |
| SK-OV-3 | 112.09 |
| Renal Cancer | |
| 786-O | 109.58 |
| A498 | 72.19 |
| ACHN | 100.51 |
| CAKI-1 | 105.32 |
| RXF 393 | 102.38 |
| SN12C | 100.68 |
| TK-10 | 100.75 |
| UO-31 | 79.44 |
| Prostate Cancer | |
| PC-3 | 98.42 |
| DU-145 | 107.82 |
| Breast Cancer | |
| MCF7 | 93.10 |
| MDA-MB-231/ATCC | 102.09 |
| HS 578T | 103.84 |
| BT-549 | 99.49 |
| T-47D | 100.87 |
| MDA-MB-468 | 79.83 |
| Mean | 98.26 |
| Delta | 26.07 |
| Range | 39.90 |



150 100 50 0 -50 -100 -150

Developmental Therapeutics Program

One Dose Mean Graph

NSC: D-824350 / 1

Conc: 1.00E-5 Molar

Test Date: Aug 17, 2020

Experiment ID: 2008OS33

Report Date: Nov 21, 2021

Panel/Cell Line

Growth Percent

Mean Growth Percent - Growth Percent

Leukemia

| | |
|-----------|--------|
| CCRF-CEM | 94.70 |
| HL-60(TB) | 95.08 |
| K-562 | 97.23 |
| MOLT-4 | 93.44 |
| RPMI-8226 | 107.20 |
| SR | 88.15 |

Non-Small Cell Lung Cancer

| | |
|-----------|--------|
| A549/ATCC | 98.79 |
| EKVX | 98.80 |
| HOP-62 | 102.38 |
| NCI-H228 | 97.29 |
| NCI-H23 | 97.24 |
| NCI-H322M | 98.27 |
| NCI-H460 | 102.79 |
| NCI-H522 | 90.21 |

Colon Cancer

| | |
|----------|--------|
| COLO 205 | 105.15 |
| HCC-2998 | 98.67 |
| HCT-116 | 98.73 |
| HCT-15 | 100.59 |
| HT29 | 112.78 |
| KM12 | 99.00 |
| SW-620 | 98.07 |

CNS Cancer

| | |
|--------|--------|
| SF-268 | 100.50 |
| SF-295 | 102.25 |
| SF-539 | 103.64 |
| SNB-19 | 95.58 |
| SNB-75 | 83.64 |
| U251 | 99.26 |

Melanoma

| | |
|------------|--------|
| LOX IMVI | 93.57 |
| MALME-3M | 100.29 |
| M14 | 98.07 |
| MDA-MB-435 | 97.68 |
| SK-MEL-2 | 103.88 |
| SK-MEL-28 | 99.15 |
| SK-MEL-5 | 97.93 |
| UACC-257 | 95.59 |
| UACC-62 | 93.82 |

Ovarian Cancer

| | |
|-------------|--------|
| IGROV1 | 98.29 |
| OVCAR-3 | 107.75 |
| OVCAR-4 | 100.32 |
| OVCAR-5 | 101.43 |
| OVCAR-8 | 96.57 |
| NCI/ADR-RES | 101.59 |
| SK-OV-3 | 108.42 |

Renal Cancer

| | |
|---------|--------|
| 786-0 | 99.00 |
| A498 | 80.02 |
| ACHN | 103.79 |
| CAKI-1 | 85.34 |
| RXF 393 | 100.65 |
| SN12C | 95.48 |
| TK-10 | 98.13 |
| UO-31 | 84.96 |

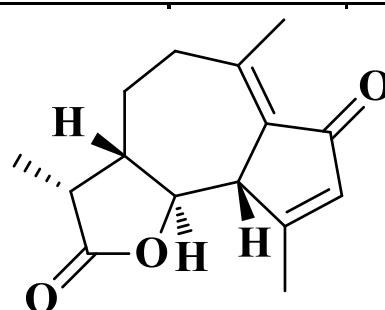
Prostate Cancer

| | |
|--------|--------|
| PC-3 | 110.27 |
| DU-145 | 108.43 |

Breast Cancer

| | |
|-----------------|--------|
| MCF7 | 98.06 |
| MDA-MB-231/ATCC | 99.65 |
| HS 578T | 93.34 |
| BT-549 | 95.82 |
| T-47D | 100.18 |
| MDA-MB-468 | 85.35 |

| | |
|-------|-------|
| Mean | 97.66 |
| Delta | 37.64 |
| Range | 52.76 |



150 100 50 0 -50 -100 -150

One Dose Mean Graph

Experiment ID: 2008OS33

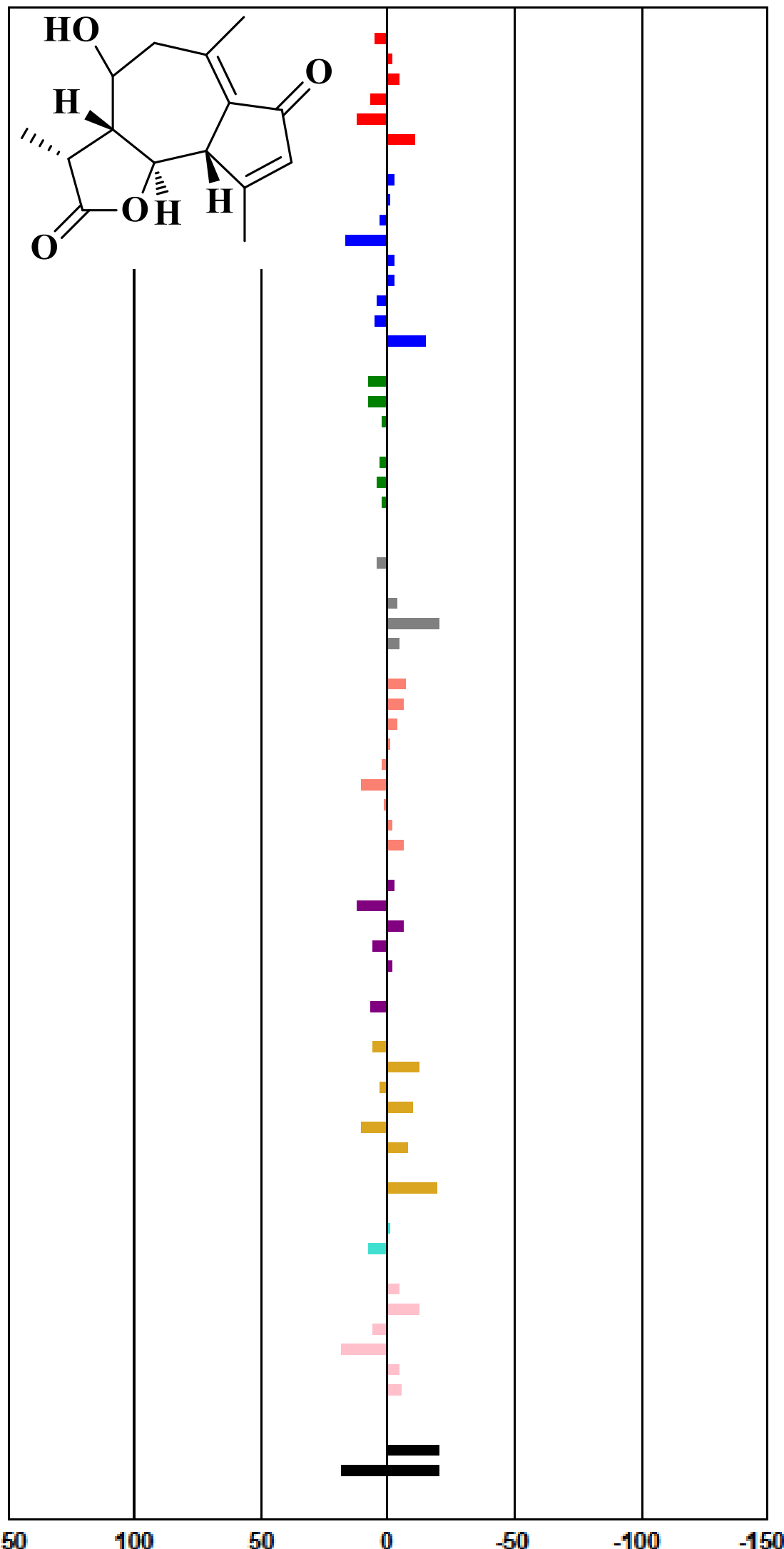
Report Date: Nov 21, 2021

Panel/Cell Line

Growth Percent

Mean Growth Percent - Growth Percent

| | |
|-----------------------------------|--------|
| Leukemia | |
| CCRF-CEM | 104.57 |
| HL-60(TB) | 98.53 |
| K-562 | 95.32 |
| MOLT-4 | 108.72 |
| RPMI-8226 | 111.96 |
| SR | 89.38 |
| Non-Small Cell Lung Cancer | |
| A549/ATCC | 97.48 |
| EKVX | 98.98 |
| HOP-82 | 102.42 |
| HOP-92 | 116.19 |
| NCI-H226 | 97.84 |
| NCI-H23 | 97.38 |
| NCI-H322M | 103.93 |
| NCI-H460 | 104.16 |
| NCI-H522 | 85.54 |
| Colon Cancer | |
| COLO 205 | 107.05 |
| HCC-2998 | 107.46 |
| HCT-116 | 101.50 |
| HCT-15 | 100.13 |
| HT29 | 102.86 |
| KM12 | 103.32 |
| SW-620 | 101.87 |
| CNS Cancer | |
| SF-268 | 100.42 |
| SF-295 | 103.79 |
| SF-539 | 100.55 |
| SNB-19 | 96.78 |
| SNB-75 | 79.52 |
| U251 | 95.36 |
| Melanoma | |
| LOX IMVI | 93.23 |
| MALME-3M | 94.24 |
| M14 | 96.17 |
| MDA-MB-435 | 99.06 |
| SK-MEL-2 | 102.09 |
| SK-MEL-28 | 110.07 |
| SK-MEL-5 | 100.79 |
| UACC-257 | 98.14 |
| UACC-62 | 93.82 |
| Ovarian Cancer | |
| IGROV1 | 97.06 |
| OVCAR-3 | 111.43 |
| OVCAR-4 | 94.05 |
| OVCAR-5 | 105.39 |
| OVCAR-8 | 98.59 |
| NCI/ADR-RES | 99.96 |
| SK-OV-3 | 106.23 |
| Renal Cancer | |
| 786-O | 105.00 |
| A498 | 87.61 |
| ACHN | 102.39 |
| CAKI-1 | 90.24 |
| RXF 393 | 109.61 |
| SN12C | 92.07 |
| TK-10 | 99.89 |
| UO-31 | 80.94 |
| Prostate Cancer | |
| PC-3 | 99.65 |
| DU-145 | 107.36 |
| Breast Cancer | |
| MCF7 | 95.92 |
| MDA-MB-231/ATCC | 87.91 |
| HS 578T | 105.18 |
| BT-549 | 117.98 |
| T-47D | 95.77 |
| MDA-MB-468 | 95.18 |
| Mean | 99.73 |
| Delta | 20.21 |
| Range | 38.46 |



Developmental Therapeutics Program

One Dose Mean Graph

NSC: D-824351 / 1

Conc: 1.00E-5 Molar

Test Date: Aug 17, 2020

Experiment ID: 2008OS33

Report Date: Nov 21, 2021

Panel/Cell Line

Growth Percent

Mean Growth Percent - Growth Percent

Leukemia

| | |
|-----------|--------|
| CCRF-CEM | -5.15 |
| HL-60(TB) | -28.59 |
| K-562 | 6.80 |
| MOLT-4 | 9.18 |
| RPMI-8226 | -19.29 |
| SR | 10.79 |

Non-Small Cell Lung Cancer

| | |
|-----------|--------|
| A549/ATCC | 17.68 |
| EKVX | 46.77 |
| HOP-62 | 42.30 |
| NCI-H228 | 16.78 |
| NCI-H23 | 24.69 |
| NCI-H322M | 36.96 |
| NCI-H460 | 4.55 |
| NCI-H522 | -11.89 |

Colon Cancer

| | |
|----------|-------|
| COLO 205 | 87.95 |
| HCC-2998 | 20.11 |
| HCT-116 | 3.39 |
| HCT-15 | 3.60 |
| HT29 | 46.78 |
| KM12 | 8.81 |
| SW-620 | 22.56 |

CNS Cancer

| | |
|--------|--------|
| SF-268 | 24.62 |
| SF-295 | -6.27 |
| SF-539 | -22.97 |
| SNB-19 | 20.99 |
| SNB-75 | -8.14 |
| U251 | 15.41 |

Melanoma

| | |
|------------|--------|
| LOX IMVI | 12.87 |
| MALME-3M | 52.25 |
| M14 | -3.36 |
| MDA-MB-435 | -23.78 |
| SK-MEL-2 | 46.88 |
| SK-MEL-28 | 56.18 |
| SK-MEL-5 | -23.59 |
| UACC-257 | 69.08 |
| UACC-62 | 29.34 |

Ovarian Cancer

| | |
|-------------|--------|
| IGROV1 | 14.09 |
| OVCAR-3 | -24.02 |
| OVCAR-4 | 37.83 |
| OVCAR-5 | 42.51 |
| OVCAR-8 | 17.11 |
| NCI/ADR-RES | 16.63 |
| SK-OV-3 | 46.48 |

Renal Cancer

| | |
|---------|--------|
| 786-O | 16.98 |
| A498 | -18.27 |
| ACHN | 21.61 |
| CAKI-1 | 28.43 |
| RXF 393 | 17.10 |
| SN12C | 26.61 |
| TK-10 | 66.09 |
| UO-31 | 44.83 |

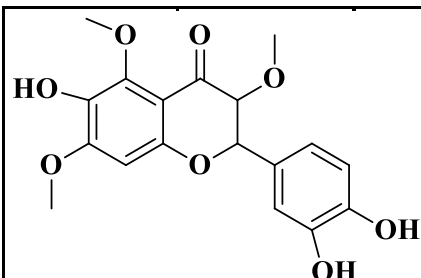
Prostate Cancer

| | |
|--------|--------|
| PC-3 | -22.25 |
| DU-145 | 5.45 |

Breast Cancer

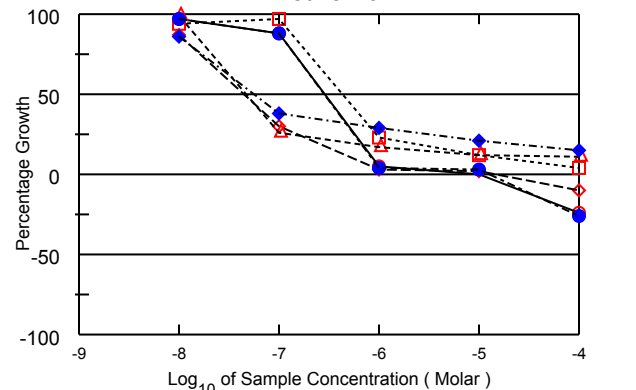
| | |
|-----------------|--------|
| MCF7 | 10.96 |
| MDA-MB-231/ATCC | -8.18 |
| HS 578T | 24.65 |
| BT-549 | -14.63 |
| T-47D | 50.28 |
| MDA-MB-468 | 7.99 |

| | |
|-------|--------|
| Mean | 16.82 |
| Delta | 45.41 |
| Range | 116.54 |

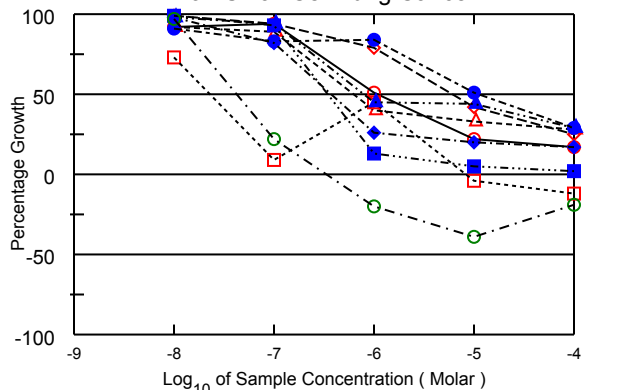


150 100 50 0 -50 -100 -150

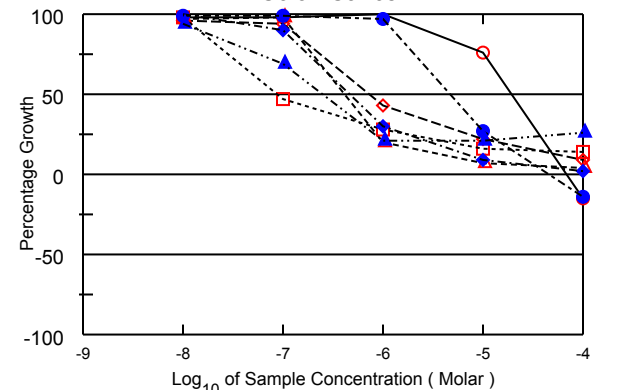
Leukemia



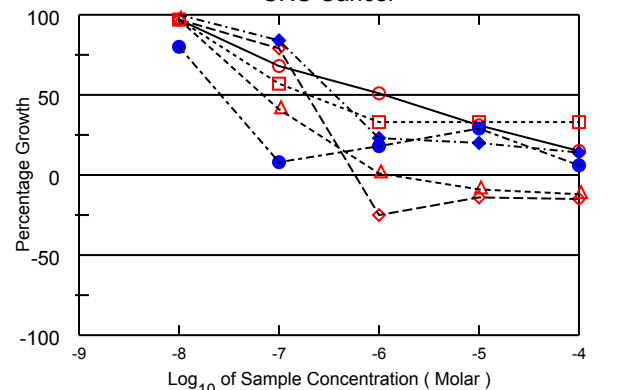
Non-Small Cell Lung Cancer



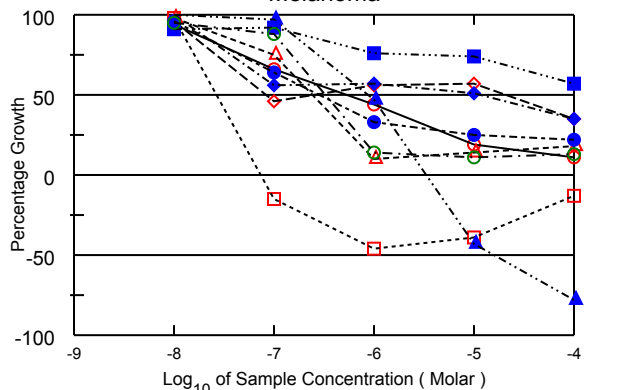
Colon Cancer



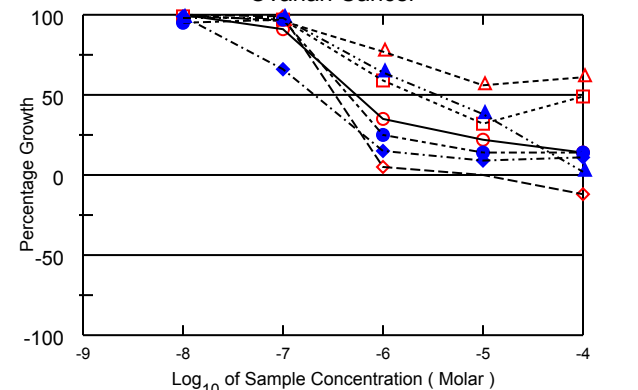
CNS Cancer



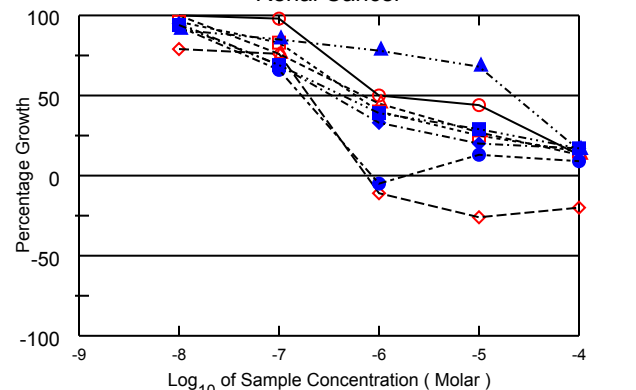
Melanoma



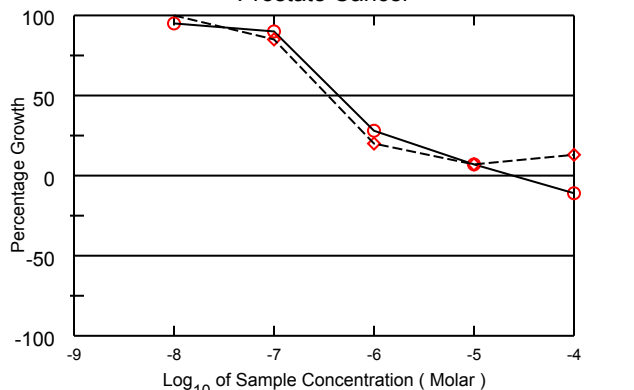
Ovarian Cancer



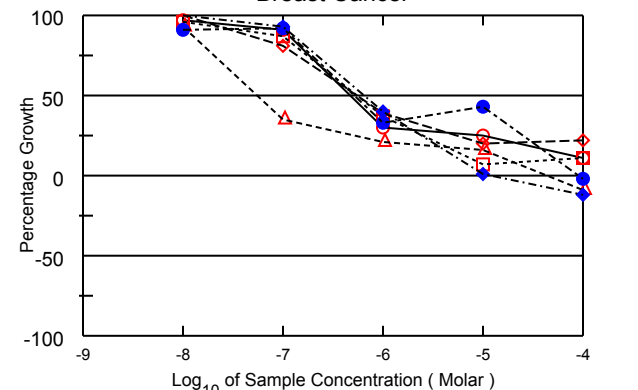
Renal Cancer



Prostate Cancer



Breast Cancer



National Cancer Institute Developmental Therapeutics Program
In-Vitro Testing Results

| | | | |
|---------------------------------|---------------------------------------|----------------|---------------|
| NSC : D - 824351 / 1 | Experiment ID : 2011RS62 | Test Type : 08 | Units : Molar |
| Report Date : November 21, 2021 | Test Date : November 16, 2020 | QNS : | MC : |
| COMI : 3 | Stain Reagent : SRB Dual-Pass Related | SSPL : 1BZB | |

| Panel/Cell Line | Log10 Concentration | | | | | | | | | | | | | | |
|----------------------------|---------------------|-------|-------|-------|-------|-------|-------|------|------|------|------|------|-----------|-----------|-----------|
| | Time Zero | Ctrl | -8.0 | -7.0 | -6.0 | -5.0 | -4.0 | -8.0 | -7.0 | -6.0 | -5.0 | -4.0 | GI50 | TGI | LC50 |
| Leukemia | | | | | | | | | | | | | | | |
| CCRF-CEM | 0.584 | 2.345 | 2.291 | 2.137 | 0.668 | 0.584 | 0.445 | 97 | 88 | 5 | . | -24 | 2.87E-7 | 9.60E-6 | > 1.00E-4 |
| HL-60(TB) | 0.530 | 2.748 | 2.465 | 2.195 | 0.603 | 0.584 | 0.475 | 87 | 30 | 3 | 2 | -10 | 4.47E-8 | 1.54E-5 | > 1.00E-4 |
| K-562 | 0.174 | 1.923 | 1.900 | 0.628 | 0.467 | 0.382 | 0.363 | 99 | 26 | 17 | 12 | 11 | 4.67E-8 | > 1.00E-4 | > 1.00E-4 |
| MOLT-4 | 0.484 | 2.661 | 2.532 | 2.606 | 0.981 | 0.755 | 0.568 | 94 | 97 | 23 | 12 | 4 | 4.32E-7 | > 1.00E-4 | > 1.00E-4 |
| RPMI-8226 | 0.781 | 2.835 | 2.770 | 2.595 | 0.867 | 0.846 | 0.580 | 97 | 88 | 4 | 3 | -26 | 2.85E-7 | 1.29E-5 | > 1.00E-4 |
| SR | 0.192 | 0.715 | 0.644 | 0.393 | 0.343 | 0.300 | 0.270 | 86 | 38 | 29 | 21 | 15 | 5.72E-8 | > 1.00E-4 | > 1.00E-4 |
| Non-Small Cell Lung Cancer | | | | | | | | | | | | | | | |
| A549/ATCC | 0.589 | 2.721 | 2.559 | 2.584 | 1.683 | 1.059 | 0.954 | 92 | 94 | 51 | 22 | 17 | 1.11E-6 | > 1.00E-4 | > 1.00E-4 |
| EKVX | 0.858 | 2.474 | 2.463 | 2.374 | 2.137 | 1.530 | 1.267 | 99 | 94 | 79 | 42 | 25 | 5.97E-6 | > 1.00E-4 | > 1.00E-4 |
| HOP-62 | 1.364 | 2.752 | 2.464 | 2.596 | 1.914 | 1.828 | 1.759 | 92 | 89 | 40 | 33 | 28 | 6.14E-7 | > 1.00E-4 | > 1.00E-4 |
| HOP-92 | 1.325 | 1.612 | 1.534 | 1.350 | 1.453 | 1.275 | 1.164 | 73 | 9 | 45 | -4 | -12 | 2.27E-8 | 8.35E-6 | > 1.00E-4 |
| NCI-H226 | 1.196 | 2.563 | 2.444 | 2.335 | 2.341 | 1.895 | 1.592 | 91 | 83 | 84 | 51 | 29 | 1.12E-5 | > 1.00E-4 | > 1.00E-4 |
| NCI-H23 | 0.554 | 2.141 | 2.115 | 1.857 | 0.962 | 0.871 | 0.817 | 98 | 82 | 26 | 20 | 17 | 3.71E-7 | > 1.00E-4 | > 1.00E-4 |
| NCI-H322M | 0.664 | 2.163 | 2.126 | 2.069 | 1.345 | 1.328 | 1.103 | 98 | 94 | 45 | 44 | 29 | 8.03E-7 | > 1.00E-4 | > 1.00E-4 |
| NCI-H460 | 0.331 | 2.854 | 2.817 | 2.688 | 0.655 | 0.455 | 0.393 | 99 | 93 | 13 | 5 | 2 | 3.46E-7 | > 1.00E-4 | > 1.00E-4 |
| NCI-H522 | 1.542 | 3.206 | 3.164 | 1.915 | 1.239 | 0.939 | 1.247 | 97 | 22 | -20 | -39 | -19 | 4.29E-8 | 3.41E-7 | > 1.00E-4 |
| Colon Cancer | | | | | | | | | | | | | | | |
| COLO 205 | 0.571 | 2.165 | 2.132 | 2.126 | 2.188 | 1.777 | 0.486 | 98 | 98 | 101 | 76 | -15 | 1.92E-5 | 6.85E-5 | > 1.00E-4 |
| HCC-2998 | 0.964 | 3.052 | 2.977 | 2.933 | 1.853 | 1.417 | 1.148 | 96 | 94 | 43 | 22 | 9 | 7.18E-7 | > 1.00E-4 | > 1.00E-4 |
| HCT-116 | 0.252 | 2.561 | 2.485 | 2.520 | 0.711 | 0.417 | 0.349 | 97 | 98 | 20 | 7 | 4 | 4.13E-7 | > 1.00E-4 | > 1.00E-4 |
| HCT-15 | 0.464 | 2.911 | 2.872 | 1.610 | 1.161 | 0.845 | 0.812 | 98 | 47 | 28 | 16 | 14 | 8.67E-8 | > 1.00E-4 | > 1.00E-4 |
| HT29 | 0.361 | 1.894 | 1.882 | 1.872 | 1.848 | 0.770 | 0.312 | 99 | 99 | 97 | 27 | -14 | 4.66E-6 | 4.58E-5 | > 1.00E-4 |
| KM12 | 0.510 | 2.711 | 2.783 | 2.500 | 1.168 | 0.709 | 0.563 | 103 | 90 | 30 | 9 | 2 | 4.65E-7 | > 1.00E-4 | > 1.00E-4 |
| SW-620 | 0.339 | 2.449 | 2.320 | 1.797 | 0.778 | 0.793 | 0.891 | 94 | 69 | 21 | 21 | 26 | 2.48E-7 | > 1.00E-4 | > 1.00E-4 |
| CNS Cancer | | | | | | | | | | | | | | | |
| SF-268 | 0.816 | 2.532 | 2.481 | 1.976 | 1.699 | 1.340 | 1.067 | 97 | 68 | 51 | 31 | 15 | 1.17E-6 | > 1.00E-4 | > 1.00E-4 |
| SF-295 | 0.394 | 2.151 | 2.101 | 1.774 | 0.295 | 0.338 | 0.333 | 97 | 79 | -25 | -14 | -15 | 1.88E-7 | 5.71E-7 | > 1.00E-4 |
| SF-539 | 0.788 | 2.476 | 2.432 | 1.473 | 0.812 | 0.716 | 0.693 | 97 | 41 | 1 | -9 | -12 | 6.82E-8 | 1.35E-6 | > 1.00E-4 |
| SNB-19 | 0.575 | 2.069 | 2.021 | 1.423 | 1.074 | 1.066 | 1.062 | 97 | 57 | 33 | 33 | 33 | 1.95E-7 | > 1.00E-4 | > 1.00E-4 |
| SNB-75 | 1.328 | 2.160 | 1.991 | 1.394 | 1.479 | 1.570 | 1.376 | 80 | 8 | 18 | 29 | 6 | 2.59E-8 | > 1.00E-4 | > 1.00E-4 |
| U251 | 0.452 | 2.165 | 2.161 | 1.898 | 0.839 | 0.788 | 0.687 | 100 | 84 | 23 | 20 | 14 | 3.60E-7 | > 1.00E-4 | > 1.00E-4 |
| Melanoma | | | | | | | | | | | | | | | |
| LOX IMVI | 0.550 | 2.944 | 2.795 | 2.121 | 1.602 | 0.998 | 0.809 | 94 | 66 | 44 | 19 | 11 | 5.26E-7 | > 1.00E-4 | > 1.00E-4 |
| MALME-3M | 0.651 | 1.746 | 1.708 | 1.150 | 1.260 | 1.272 | 1.036 | 96 | 46 | 56 | 57 | 35 | . | > 1.00E-4 | > 1.00E-4 |
| M14 | 0.544 | 2.580 | 2.547 | 2.069 | 0.757 | 0.825 | 0.906 | 98 | 75 | 10 | 14 | 18 | 2.43E-7 | > 1.00E-4 | > 1.00E-4 |
| MDA-MB-435 | 0.900 | 3.202 | 3.147 | 0.761 | 0.482 | 0.550 | 0.780 | 98 | -15 | -46 | -39 | -13 | 2.64E-8 | 7.30E-8 | > 1.00E-4 |
| SK-MEL-2 | 1.353 | 3.007 | 2.941 | 2.410 | 1.898 | 1.762 | 1.722 | 96 | 64 | 33 | 25 | 22 | 2.81E-7 | > 1.00E-4 | > 1.00E-4 |
| SK-MEL-28 | 0.666 | 2.212 | 2.225 | 1.537 | 1.541 | 1.454 | 1.213 | 101 | 56 | 57 | 51 | 35 | 1.15E-5 | > 1.00E-4 | > 1.00E-4 |
| SK-MEL-5 | 1.427 | 3.385 | 3.384 | 3.336 | 2.357 | 0.817 | 0.314 | 100 | 97 | 47 | -43 | -78 | 8.90E-7 | 3.36E-6 | 1.60E-5 |
| UACC-257 | 1.619 | 3.039 | 2.918 | 2.919 | 2.701 | 2.666 | 2.425 | 91 | 92 | 76 | 74 | 57 | > 1.00E-4 | > 1.00E-4 | > 1.00E-4 |
| UACC-62 | 0.902 | 3.018 | 2.907 | 2.762 | 1.197 | 1.135 | 1.181 | 95 | 88 | 14 | 11 | 13 | 3.25E-7 | > 1.00E-4 | > 1.00E-4 |
| Ovarian Cancer | | | | | | | | | | | | | | | |
| IGROV1 | 0.362 | 1.757 | 1.763 | 1.627 | 0.848 | 0.664 | 0.556 | 100 | 91 | 35 | 22 | 14 | 5.35E-7 | > 1.00E-4 | > 1.00E-4 |
| OVCAR-3 | 0.570 | 1.904 | 1.993 | 1.884 | 0.639 | 0.575 | 0.500 | 107 | 99 | 5 | . | -12 | 3.31E-7 | 1.07E-5 | > 1.00E-4 |
| OVCAR-4 | 1.066 | 1.999 | 2.033 | 1.960 | 1.788 | 1.584 | 1.632 | 104 | 96 | 77 | 56 | 61 | > 1.00E-4 | > 1.00E-4 | > 1.00E-4 |
| OVCAR-5 | 0.513 | 1.576 | 1.562 | 1.540 | 1.144 | 0.855 | 1.032 | 99 | 97 | 59 | 32 | 49 | 2.21E-6 | > 1.00E-4 | > 1.00E-4 |
| OVCAR-8 | 0.513 | 2.353 | 2.261 | 2.296 | 0.978 | 0.775 | 0.765 | 95 | 97 | 25 | 14 | 14 | 4.51E-7 | > 1.00E-4 | > 1.00E-4 |
| NCI/ADR-RES | 0.825 | 2.756 | 2.734 | 2.091 | 1.118 | 0.999 | 1.045 | 99 | 66 | 15 | 9 | 11 | 2.03E-7 | > 1.00E-4 | > 1.00E-4 |
| SK-OV-3 | 1.195 | 2.227 | 2.205 | 2.204 | 1.856 | 1.589 | 1.217 | 98 | 98 | 64 | 38 | 2 | 3.47E-6 | > 1.00E-4 | > 1.00E-4 |
| Renal Cancer | | | | | | | | | | | | | | | |
| 786-0 | 0.614 | 2.326 | 2.320 | 2.293 | 1.467 | 1.372 | 0.831 | 100 | 98 | 50 | 44 | 13 | 9.92E-7 | > 1.00E-4 | > 1.00E-4 |
| A498 | 1.885 | 2.646 | 2.486 | 2.467 | 1.669 | 1.389 | 1.507 | 79 | 76 | -11 | -26 | -20 | 2.00E-7 | 7.41E-7 | > 1.00E-4 |
| ACHN | 0.271 | 1.384 | 1.383 | 1.113 | 0.768 | 0.572 | 0.413 | 100 | 76 | 45 | 27 | 13 | 6.70E-7 | > 1.00E-4 | > 1.00E-4 |
| CAKI-1 | 0.638 | 2.303 | 2.240 | 2.015 | 1.296 | 1.054 | 0.894 | 96 | 83 | 40 | 25 | 15 | 5.72E-7 | > 1.00E-4 | > 1.00E-4 |
| RXF 393 | 1.079 | 1.983 | 1.924 | 1.673 | 1.021 | 1.198 | 1.161 | 93 | 66 | -5 | 13 | 9 | 1.66E-7 | . | > 1.00E-4 |
| SN12C | 0.526 | 1.928 | 1.857 | 1.492 | 0.993 | 0.801 | 0.766 | 95 | 69 | 33 | 20 | 17 | 3.39E-7 | > 1.00E-4 | > 1.00E-4 |
| TK-10 | 1.310 | 2.101 | 2.026 | 1.985 | 1.930 | 1.848 | 1.434 | 91 | 85 | 78 | 68 | 16 | 2.20E-5 | > 1.00E-4 | > 1.00E-4 |
| UO-31 | 0.478 | 2.055 | 1.966 | 1.561 | 1.099 | 0.938 | 0.749 | 94 | 69 | 39 | 29 | 17 | 4.34E-7 | > 1.00E-4 | > 1.00E-4 |
| Prostate Cancer | | | | | | | | | | | | | | | |
| PC-3 | 0.572 | 1.900 | 1.838 | 1.772 | 0.940 | 0.669 | 0.512 | 95 | 90 | 28 | 7 | -11 | 4.41E-7 | 2.56E-5 | > 1.00E-4 |
| DU-145 | 0.480 | 2.143 | 2.159 | 1.893 | 0.807 | 0.593 | 0.703 | 101 | 85 | 20 | 7 | 13 | 3.43E-7 | > 1.00E-4 | > 1.00E-4 |
| Breast Cancer | | | | | | | | | | | | | | | |
| MCF7 | 0.917 | 3.047 | 2.973 | 2.860 | 1.558 | 1.456 | 1.159 | 97 | 91 | 30 | 25 | 11 | 4.72E-7 | > 1.00E-4 | > 1.00E-4 |
| MDA-MB-231/ATCC | 0.589 | 1.477 | 1.502 | 1.312 | 0.940 | 0.763 | 0.784 | 103 | 81 | 39 | 20 | 22 | 5.61E-7 | > 1.00E-4 | > 1.00E-4 |
| HS 578T | 1.473 | 2.288 | 2.235 | 1.761 | 1.646 | 1.604 | 1.344 | 93 | 35 | 21 | 16 | -9 | 5.59E-8 | 4.43E-5 | > 1.00E-4 |
| BT-549 | 1.041 | 2.337 | 2.285 | 2.165 | 1.523 | 1.131 | 1.182 | 96 | 87 | 37 | 7 | 11 | 5.52E-7 | > 1.00E-4 | > 1.00E-4 |
| T-47D | 0.850 | 1.856 | 1.764 | 1.778 | 1.180 | 1.282 | 0.837 | 91 | 92 | 33 | 43 | -2 | 5.13E-7 | 9.24E-5 | > 1.00E-4 |
| MDA-MB-468 | 1.631 | 2.919 | 2.930 | 2.834 | 2.145 | 1.650 | 1.431 | 101 | 93 | 40 | 1 | -12 | 6.47E-7 | 1.28E-5 | > 1.00E-4 |

| National Cancer Institute Developmental Therapeutics Program | | | NSC : D - 824351/1 | | Units :Molar | | SSPL :1BZB | | EXP. ID :2011RS62 | |
|--|------------------------|------|--------------------------------|-----|------------------------|------|------------|------------------------------|-------------------|--|
| Mean Graphs | | | Report Date :November 21, 2021 | | | | | Test Date :November 16, 2020 | | |
| Panel/Cell Line | Log ₁₀ GI50 | GI50 | Log ₁₀ TGI | TGI | Log ₁₀ LC50 | LC50 | | | | |
| Leukemia | | | | | | | | | | |
| CCRF-CEM | -6.54 | | -5.02 | | > -4.00 | | | | | |
| HL-60(TB) | -7.35 | | -4.81 | | > -4.00 | | | | | |
| K-562 | -7.33 | | > -4.00 | | > -4.00 | | | | | |
| MOLT-4 | -6.36 | | > -4.00 | | > -4.00 | | | | | |
| RPMI-8226 | -6.54 | | -4.89 | | > -4.00 | | | | | |
| SR | -7.24 | | > -4.00 | | > -4.00 | | | | | |
| Non-Small Cell Lung Cancer | | | | | | | | | | |
| A549/ATCC | -5.96 | | > -4.00 | | > -4.00 | | | | | |
| EKVX | -5.22 | | > -4.00 | | > -4.00 | | | | | |
| HOP-62 | -6.21 | | > -4.00 | | > -4.00 | | | | | |
| HOP-92 | -7.64 | | -5.08 | | > -4.00 | | | | | |
| NCI-H226 | -4.95 | | > -4.00 | | > -4.00 | | | | | |
| NCI-H23 | -6.43 | | > -4.00 | | > -4.00 | | | | | |
| NCI-H322M | -6.10 | | > -4.00 | | > -4.00 | | | | | |
| NCI-H460 | -6.46 | | > -4.00 | | > -4.00 | | | | | |
| NCI-H522 | -7.37 | | -6.47 | | > -4.00 | | | | | |
| Colon Cancer | | | | | | | | | | |
| COLO 205 | -4.72 | | -4.16 | | > -4.00 | | | | | |
| HCC-2998 | -6.14 | | > -4.00 | | > -4.00 | | | | | |
| HCT-116 | -6.38 | | > -4.00 | | > -4.00 | | | | | |
| HCT-15 | -7.06 | | > -4.00 | | > -4.00 | | | | | |
| HT29 | -5.33 | | -4.34 | | > -4.00 | | | | | |
| KM12 | -6.33 | | > -4.00 | | > -4.00 | | | | | |
| SW-620 | -6.61 | | > -4.00 | | > -4.00 | | | | | |
| CNS Cancer | | | | | | | | | | |
| SF-268 | -5.93 | | > -4.00 | | > -4.00 | | | | | |
| SF-295 | -6.73 | | -6.24 | | > -4.00 | | | | | |
| SF-539 | -7.17 | | -5.87 | | > -4.00 | | | | | |
| SNB-19 | -6.71 | | > -4.00 | | > -4.00 | | | | | |
| SNB-75 | -7.59 | | > -4.00 | | > -4.00 | | | | | |
| U251 | -6.44 | | > -4.00 | | > -4.00 | | | | | |
| Melanoma | | | | | | | | | | |
| LOX IMVI | -6.28 | | > -4.00 | | > -4.00 | | | | | |
| MALME-3M | | | > -4.00 | | > -4.00 | | | | | |
| M14 | -6.61 | | > -4.00 | | > -4.00 | | | | | |
| MDA-MB-435 | -7.58 | | -7.14 | | > -4.00 | | | | | |
| SK-MEL-2 | -6.55 | | > -4.00 | | > -4.00 | | | | | |
| SK-MEL-28 | -4.94 | | > -4.00 | | > -4.00 | | | | | |
| SK-MEL-5 | -6.05 | | -5.47 | | > -4.80 | | | | | |
| UACC-257 | > -4.00 | | > -4.00 | | > -4.00 | | | | | |
| UACC-62 | -6.49 | | > -4.00 | | > -4.00 | | | | | |
| Ovarian Cancer | | | | | | | | | | |
| IGROV1 | -6.27 | | > -4.00 | | > -4.00 | | | | | |
| OVCAR-3 | -6.48 | | -4.97 | | > -4.00 | | | | | |
| OVCAR-4 | > -4.00 | | > -4.00 | | > -4.00 | | | | | |
| OVCAR-5 | -5.66 | | > -4.00 | | > -4.00 | | | | | |
| OVCAR-8 | -6.35 | | > -4.00 | | > -4.00 | | | | | |
| NCI/ADR-RES | -6.69 | | > -4.00 | | > -4.00 | | | | | |
| SK-OV-3 | -5.46 | | > -4.00 | | > -4.00 | | | | | |
| Renal Cancer | | | | | | | | | | |
| 786-0 | -6.00 | | > -4.00 | | > -4.00 | | | | | |
| A498 | -6.70 | | -6.13 | | > -4.00 | | | | | |
| ACHN | -6.17 | | > -4.00 | | > -4.00 | | | | | |
| CAKI-1 | -6.24 | | > -4.00 | | > -4.00 | | | | | |
| RXF 393 | -6.78 | | > -4.00 | | > -4.00 | | | | | |
| SN12C | -6.47 | | > -4.00 | | > -4.00 | | | | | |
| TK-10 | -4.66 | | > -4.00 | | > -4.00 | | | | | |
| UO-31 | -6.36 | | > -4.00 | | > -4.00 | | | | | |
| Prostate Cancer | | | | | | | | | | |
| PC-3 | -6.36 | | -4.59 | | > -4.00 | | | | | |
| DU-145 | -6.46 | | > -4.00 | | > -4.00 | | | | | |
| Breast Cancer | | | | | | | | | | |
| MC7F | -6.33 | | > -4.00 | | > -4.00 | | | | | |
| MDA-MB-231/ATCC | -6.25 | | > -4.00 | | > -4.00 | | | | | |
| HS 578T | -7.25 | | -4.35 | | > -4.00 | | | | | |
| BT-549 | -6.26 | | > -4.00 | | > -4.00 | | | | | |
| T-47D | -6.29 | | -4.03 | | > -4.00 | | | | | |
| MDA-MB-468 | -6.19 | | -4.89 | | > -4.00 | | | | | |
| | | | | | | | | | | |
| | | | | | | | | | | |
| | | | | | | | | | | |
| | | | | | | | | | | |
| | | | | | | | | | | |
| | | | | | | | | | | |
| | | | | | | | | | | |
| | | | | | | | | | | |
| | | | | | | | | | | |
| | | | | | | | | | | |
| | | | | | | | | | | |
| | | | | | | | | | | |
| | | | | | | | | | | |
| | | | | | | | | | | |
| | | | | | | | | | | |
| | | | | | | | | | | |
| | | | | | | | | | | |
| | | | | | | | | | | |
| | | | | | | | | | | |
| | | | | | | | | | | |
| | | | | | | | | | | |
| | | | | | | | | | | |
| | | | | | | | | | | |
| | | | | | | | | | | |
| | | | | | | | | | | |
| | | | | | | | | | | |
| | | | | | | | | | | |
| | | | | | | | | | | |
| | | | | | | | | | | |
| | | | | | | | | | | |
| | | | | | | | | | | |
| | | | | | | | | | | |
| | | | | | | | | | | |
| | | | | | | | | | | |
| | | | | | | | | | | |
| | | | | | | | | | | |
| | | | | | | | | | | |
| | | | | | | | | | | |
| | | | | | | | | | | |
| | | | | | | | | | | |
| | | | | | | | | | | |
| | | | | | | | | | | |
| | | | | | | | | | | |
| | | | | | | | | | | |
| | | | | | | | | | | |
| | | | | | | | | | | |
| | | | | | | | | | | |
| | | | | | | | | | | |
| | | | | | | | | | | |
| | | | | | | | | | | |
| | | | | | | | | | | |
| | | | | | | | | | | |
| | | | | | | | | | | |
| | | | | | | | | | | |
| | | | | | | | | | | |
| | | | | | | | | | | |
| | | | | | | | | | | |
| | | | | | | | | | | |
| | | | | | | | | | | |
| | | | | | | | | | | |

All Cell Lines

