

Supplementary Figures

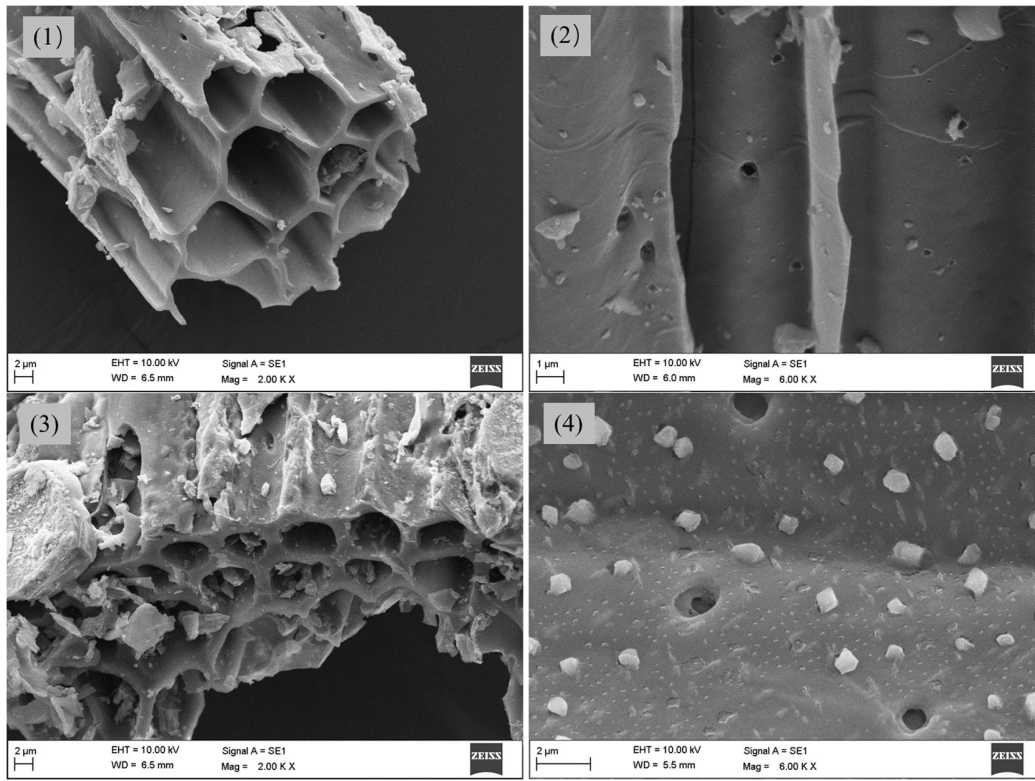


Figure S1. SEM images for biochar materials

Regular biochar (1) at 2000 times, (2) at 6000 times, and Mg-modified biochar (3) at 2000 times and (4) at 6000 times magnification

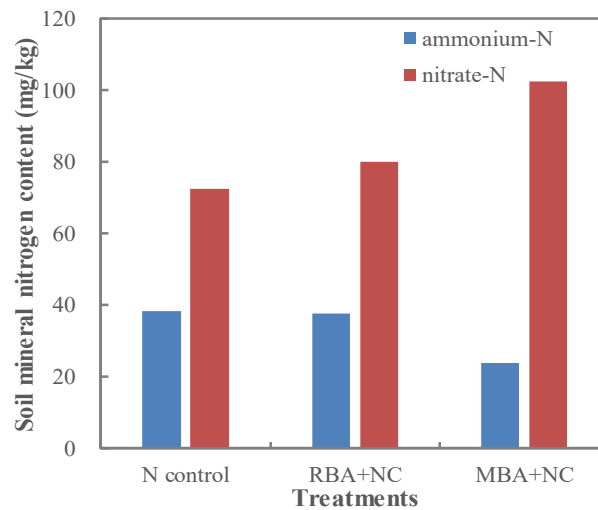


Figure S2. Soil inorganic nitrogen content after one season of vegetable planting

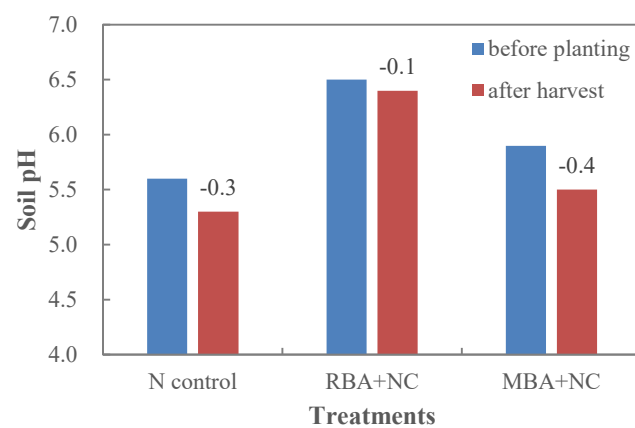


Figure S3. The change of soil pH in planting experiment