

Supplementary file:

## ***Tribulus terrestris* Cytotoxicity against Breast Cancer MCF-7 and Lung Cancer A549 Cell Lines Is Mediated via Activation of Apoptosis, Caspase-3, DNA Degradation, and Suppressing Bcl-2 Activity**

Ali Mohamed Alshabi <sup>1,\*</sup>, Saad Ahmed Alkahtani <sup>1</sup>, Ibrahim Ahmed Shaikh <sup>2</sup>, Mohamed A. A. Orabi <sup>3</sup>, Basel A. Abdel-Wahab <sup>2</sup>, Ismail A. Walbi <sup>1</sup>, Mohammed Shafiuddin Habeeb <sup>2</sup>, Masood Medleri Khateeb <sup>2</sup>, Arun K. Shettar <sup>4</sup> and Joy H. Hoskeri <sup>5</sup>

<sup>1</sup> Department of Clinical Pharmacy, College of Pharmacy, Najran University, Najran 64462, Saudi Arabia

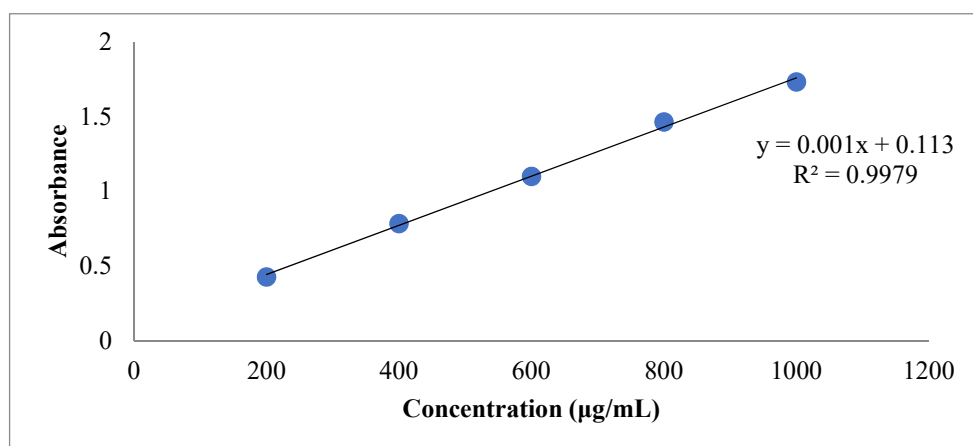
<sup>2</sup> Department of Pharmacology, College of Pharmacy, Najran University, Najran 64462, Saudi Arabia

<sup>3</sup> Department of Pharmacognosy, College of Pharmacy, Najran University, Najran 64462, Saudi Arabia

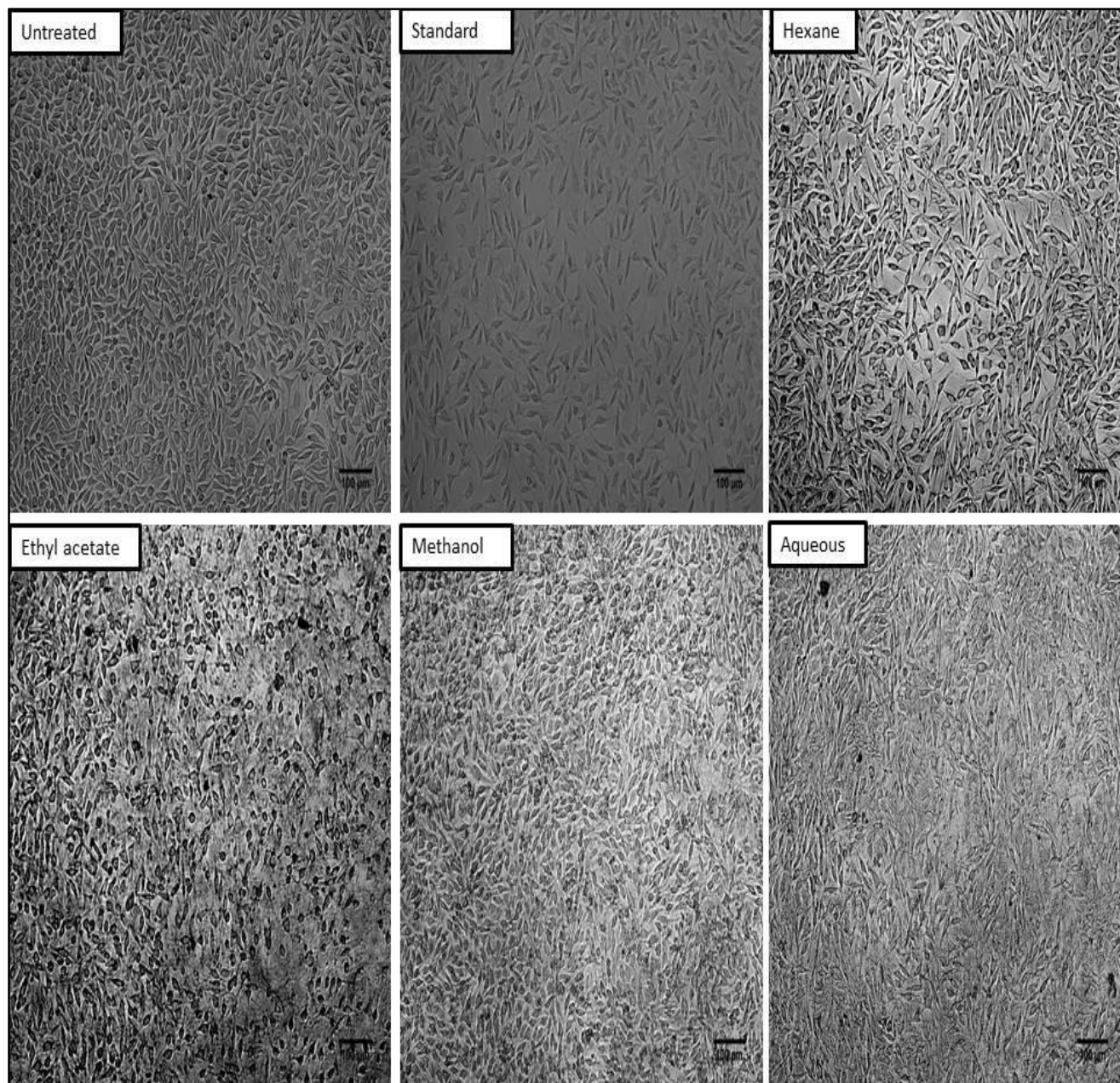
<sup>4</sup> Department of Pre-Clinical Research and Drug Development, Cytixon Biosolutions Pvt. Ltd., Hubballi 580031, Karnataka, India

<sup>5</sup> Department of Bioinformatics and Biotechnology, Karnataka State Akkamahadevi Women's University, Vijayapura 586102, Karnataka, India

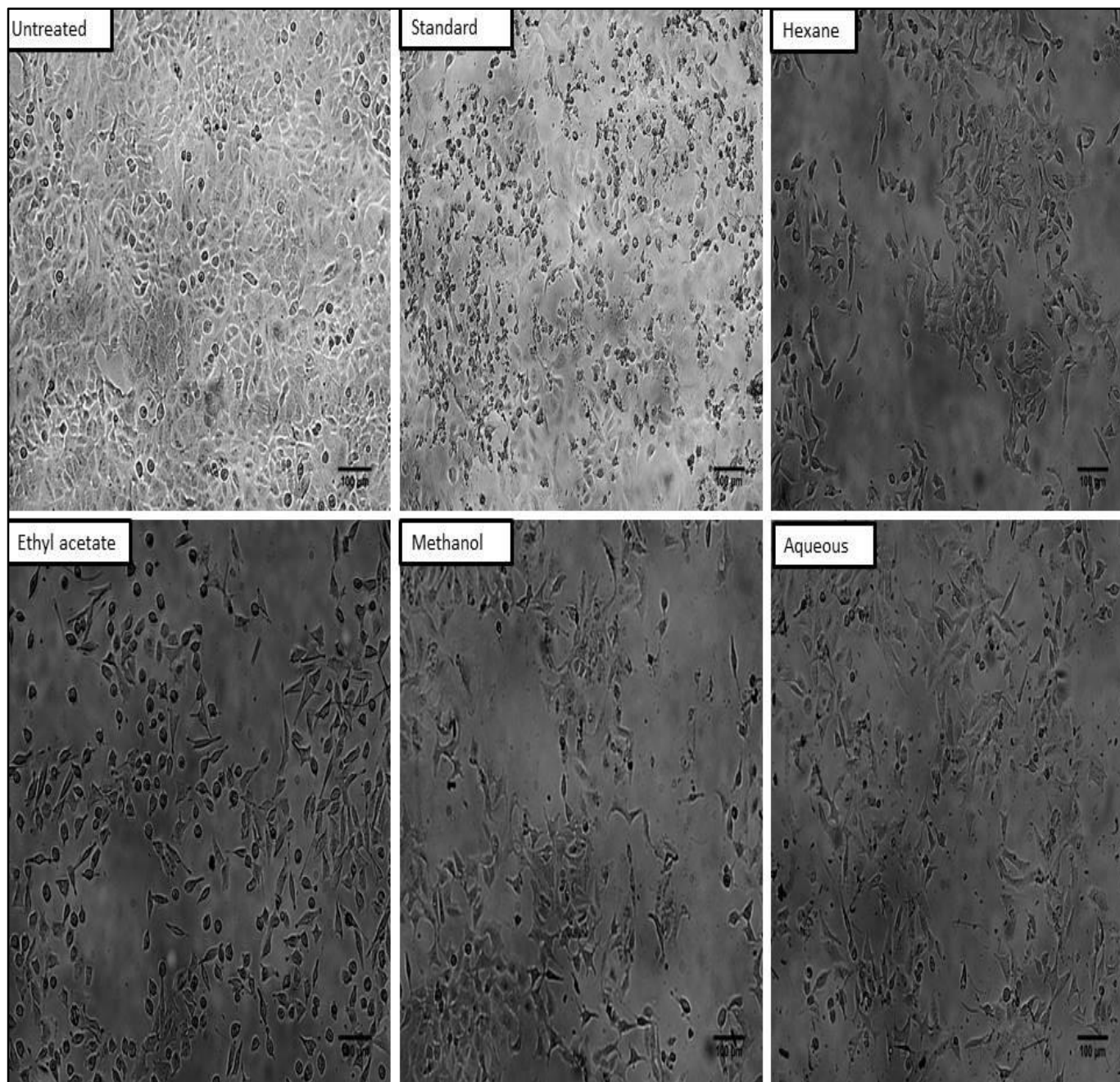
\* Correspondence: dr.aliresearch19@gmail.com; +966-553-600660



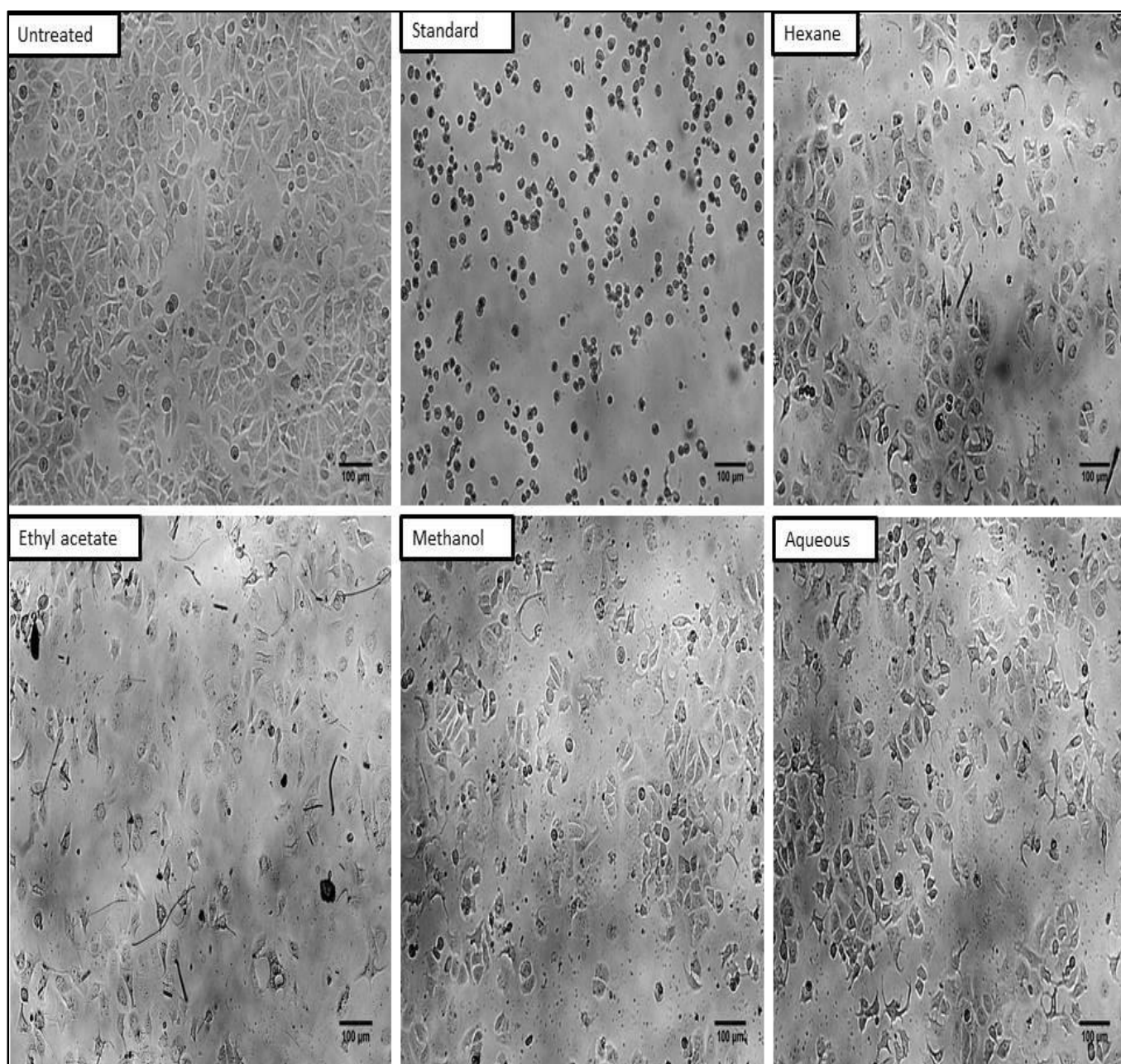
**Figure S1.** Calibration curve for the standard gallic acid



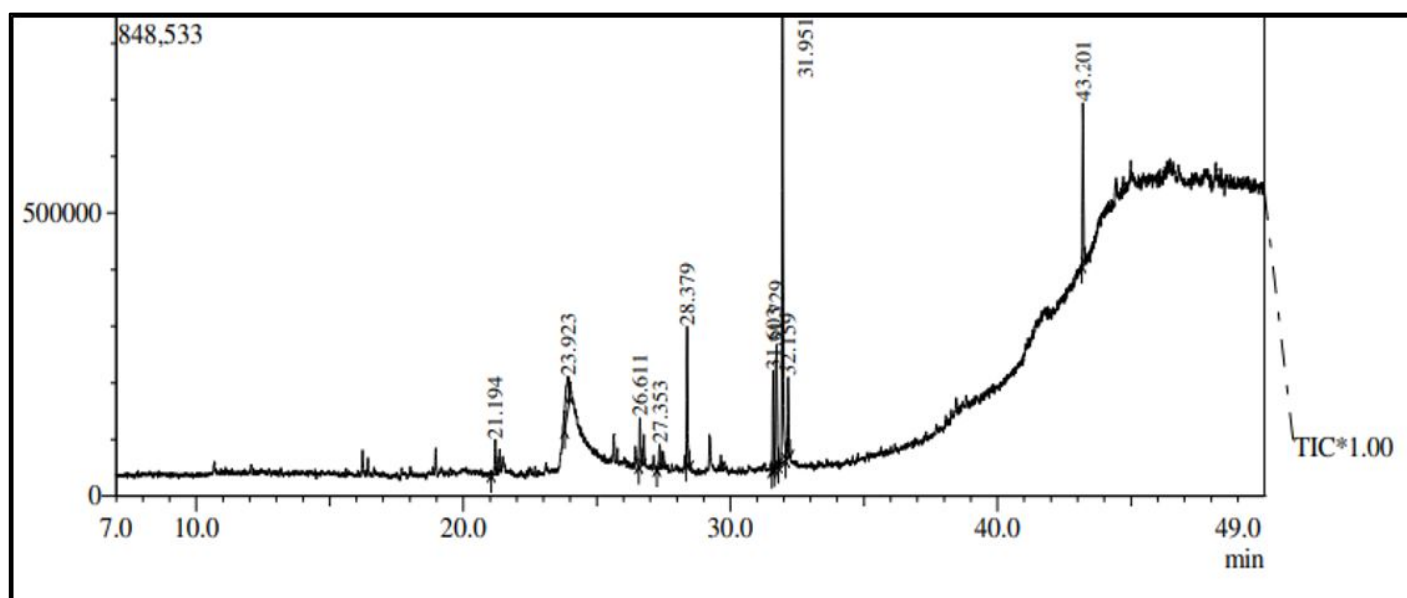
**Figure S2.** Images of cytotoxicity of methanol extract of *T. terrestris* on non-cancerous L929 cell line



**Figure S3.** Images of cytotoxicity of methanol extract of *T. terrestris* on lung cancer (A549) cell line



**Figure S4.** Images of cytotoxicity of methanol extract of *T. terrestris* on breast cancer (MCF-7) cell line



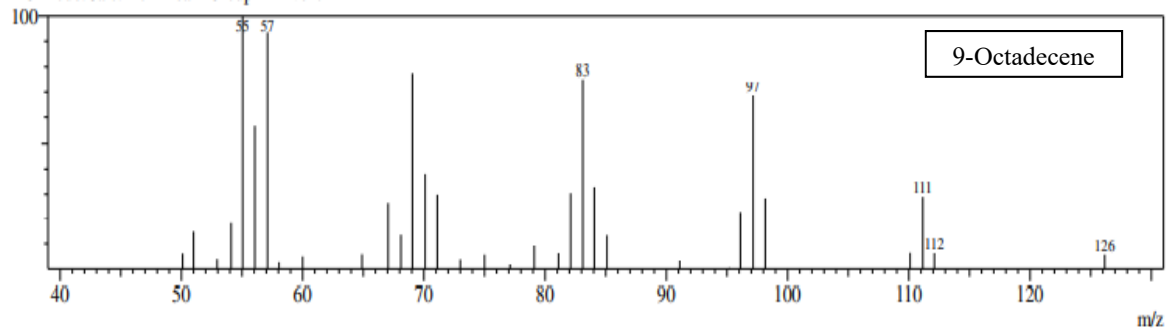
**Figure S5.** GC spectrum of methanol extract of *T. terrestris*

Line#:1 R.Time:21.192(Scan#:1704)

MassPeaks:33

RawMode:Averaged 21.183-21.200(1703-1705) BasePeak:55(6310)

BG Mode:Calc. from Peak Group 1 - Event 1

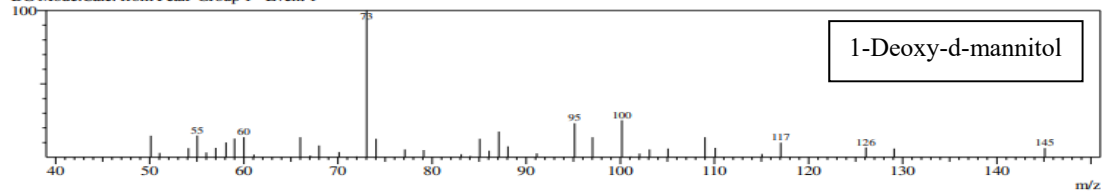


Line#:2 R.Time:23.925(Scan#:2032)

MassPeaks:40

RawMode:Averaged 23.917-23.933(2031-2033) BasePeak:73(5386)

BG Mode:Calc. from Peak Group 1 - Event 1

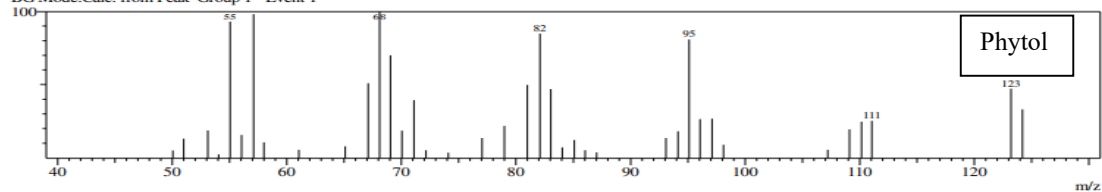


Line#:3 R.Time:26.608(Scan#:2354)

MassPeaks:38

RawMode:Averaged 26.600-26.617(2353-2355) BasePeak:68(6276)

BG Mode:Calc. from Peak Group 1 - Event 1

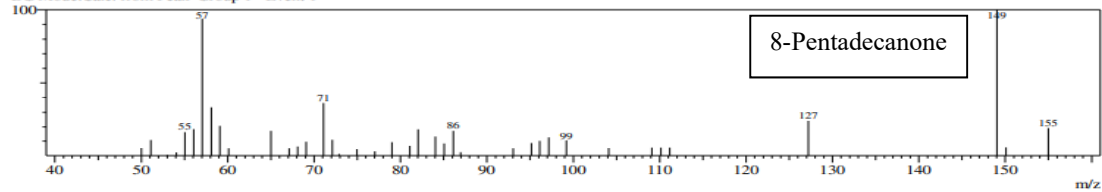


Line#:4 R.Time:27.350(Scan#:2443)

MassPeaks:40

RawMode:Averaged 27.342-27.358(2442-2444) BasePeak:149(6984)

BG Mode:Calc. from Peak Group 1 - Event 1

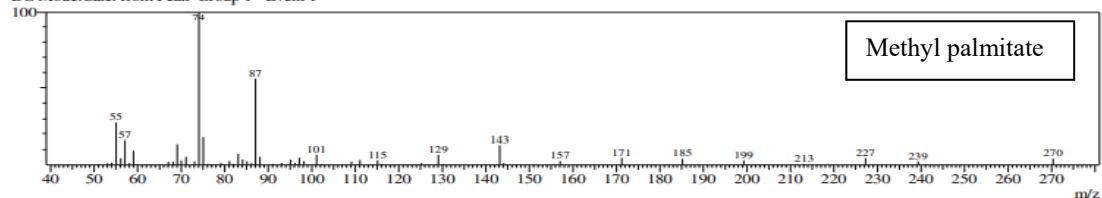


Line#:5 R.Time:28.375(Scan#:2566)

MassPeaks:54

RawMode:Averaged 28.367-28.383(2565-2567) BasePeak:74(60935)

BG Mode:Calc. from Peak Group 1 - Event 1





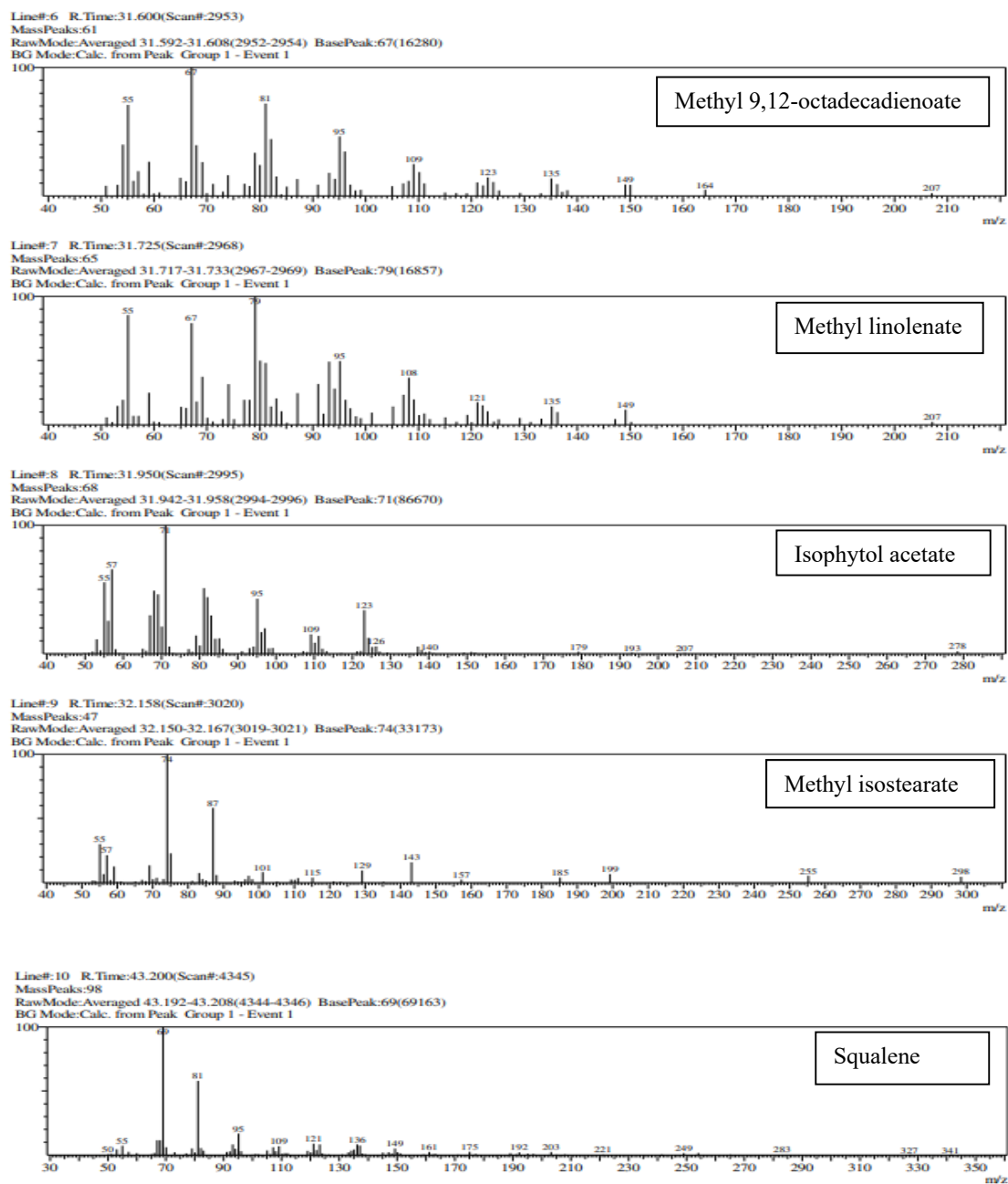


Figure S6. MS spectra of methanol extract of *T. terrestris*

**Table S1.** Qualitative phytochemical analysis of different solvent extracts of *T. terrestris*

Tests	Hexane	Ethyl Acetate	Methanol	Aqueous
Alkaloids	-ve	-ve	+ve	-ve
Flavonoids	-ve	-ve	+ve	-ve
Glycosides	-ve	+ve	-ve	-ve
Phenols	-ve	-ve	+ve	+ve
Saponins	-ve	+ve	-ve	-ve
Tannins	-ve	-ve	-ve	-ve
Terpenoids	-ve	-ve	+ve	+ve

+ve: Present; -ve: absent