

Supplementary Materials

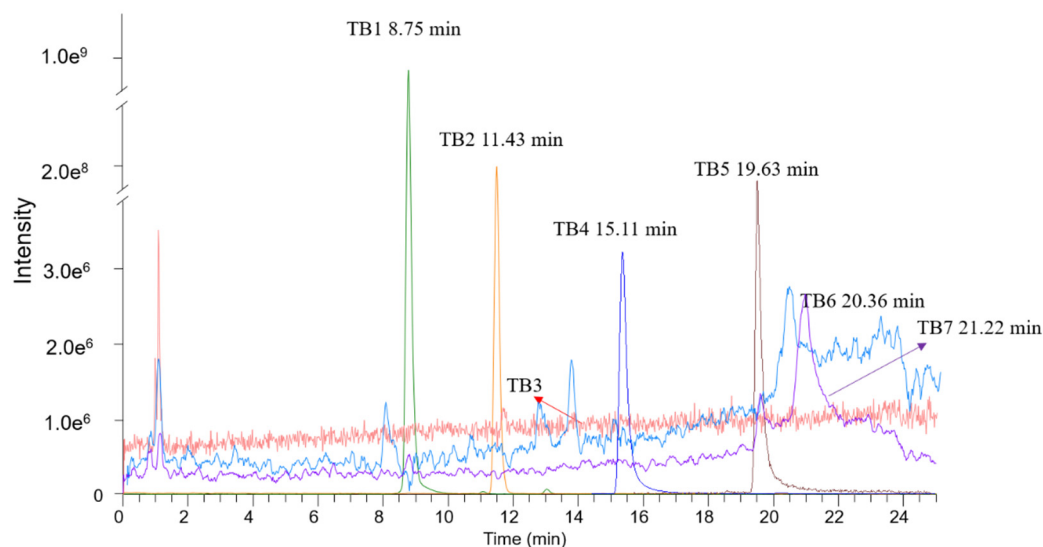


Figure S1. Typical Chromatograms of chemical components (TB-TB7) of Tartary buckwheat extracts using a BEH C18 column. The mobile phase consisted of acetonitrile (mobile phase B) and water containing 0.1% formic acid (mobile phase A). The gradient profile was as follows: 0–20 min at 50–95% B; 20.01–25 min at 50% B. The flow rate was set at 0.3 mL/min and the LC column temperature was maintained at 40 °C. The sample injection volume was 10 μ L. TB1: Rutin; TB2: kaempferol-3-O-rutinoside; TB3: N-trans-Feruloyltyramine; TB4: Quercetin; TB5: Kaempferol; TB6: Apigenin; TB7: Acacetin. The total analytical run was 25 min.

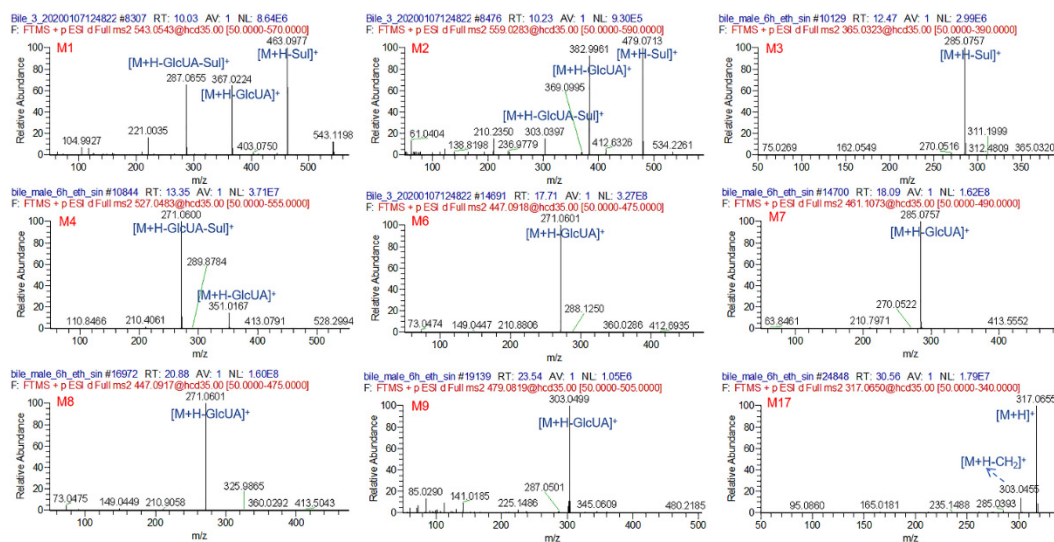


Figure S2: The MS² spectra of metabolites detected in rat bile after oral co-administration of Tartary buckwheat extracts with ethanol.

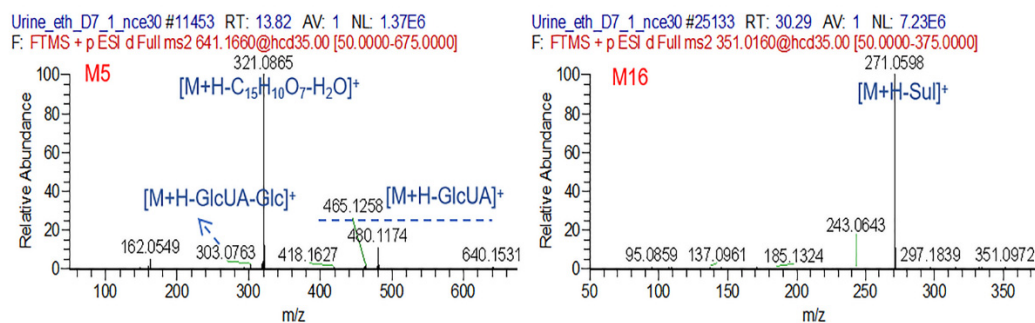


Figure S3: The MS² spectra of metabolites detected in rat urine after oral co-administration of Tartary buckwheat extracts with ethanol.

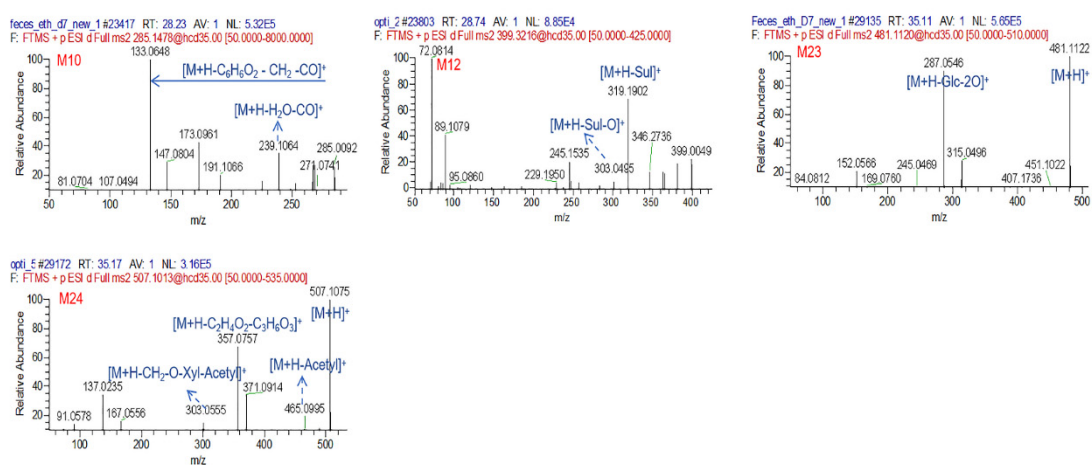


Figure S4: The MS² spectra of metabolites detected in rat feces after oral co-administration of Tartary buckwheat extracts with ethanol.