

# Flavonoids Extraction Kinetics, Antimicrobial Activity and Radical Scavenging Potential of Bulgarian Woundwort (*Solidago virgaurea* L.)

Zvezdelina Yaneva <sup>1,\*</sup>, Evgeni Simeonov <sup>2</sup>, Nikolina Rusenova <sup>3</sup>, Donika Ivanova <sup>1,4</sup>, Galina Nikolova <sup>4</sup>, Yanka Karamalakova <sup>4</sup>, Chavdar Chilev <sup>2</sup> and Georgi Beev <sup>5</sup>

<sup>1</sup> Chemistry Unit, Department of Pharmacology, Animal Physiology, Biochemistry and Chemistry, Faculty of Veterinary Medicine, Trakia University, Students Campus, 6000 Stara Zagora, Bulgaria; donika\_georgiewa@abv.bg

<sup>2</sup> Department of Chemical Engineering, Faculty of Chemical and System Engineering, University of Chemical Technology and Metallurgy, 1756 Sofia, Bulgaria; evgeni@uctm.edu (E.S.); cchilev@abv.bg (C.C.)

<sup>3</sup> Veterinary Microbiology Unit, Department of Veterinary Microbiology, Infectious and Parasitic Diseases, Faculty of Veterinary Medicine, Trakia University, Students Campus, 6000 Stara Zagora, Bulgaria; n\_v\_n\_v@abv.bg

<sup>4</sup> Department of Chemistry and Biochemistry, Faculty of Medicine, Trakia University, 11 Armeiska Str., 6000 Stara Zagora, Bulgaria; galina.nikolova@trakia-uni.bg (G.N.); yanka.karamalakova@trakia-uni.bg (Y.K.)

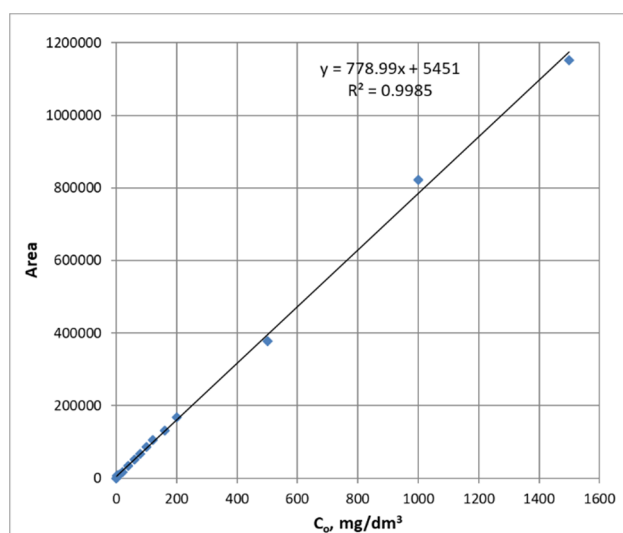
<sup>5</sup> Department of Biochemistry, Microbiology and Physics, Faculty of Agriculture, Trakia University, Students Campus, 6000 Stara Zagora, Bulgaria; gbeev@abv.bg

\* Correspondence: zvezdelina.yaneva@trakia-uni.bg; Tel.: +359-898-399-203

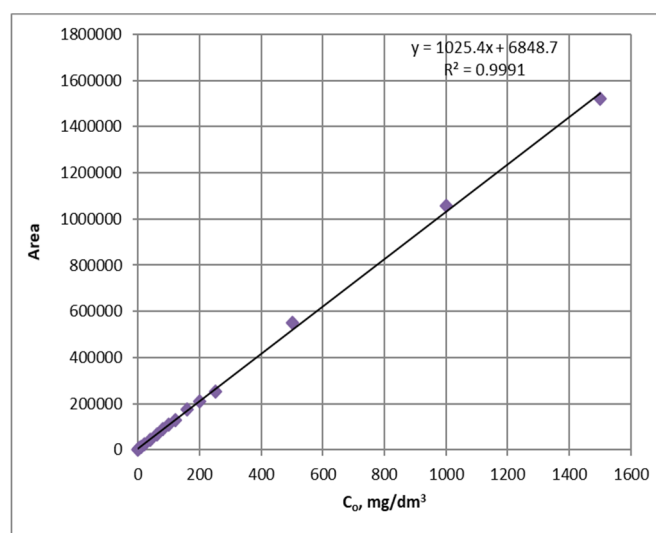
**Table S1.** Concentrations of the flavonoids quercetin, epigallocatechin and catechin in the samples of the four goldenrod extracts series.

Sample	Extraction time, t, min	Quercetin concentration, µg/mL	Epigallocatechin concentration, µg/mL	Catechin concentration, µg/mL
<i>Series 1 (70% EtOH, T = 20°C)</i>				
S1'	5	6.526	1166.800	576.700
S2'	10	7.100	1274.000	732.200
S3'	15	7.934	1304.760	794.200
S4'	20	8.626	1320.286	912.100
S5'	30	9.460	1329.010	936.900
S6'	60	11.700	1347.000	1141.960
S7'	90	13.000	1353.800	1210.310
S8'	120	13.752	1358.400	1262.900
S9'	150	17.953	1369.200	1386.200
<i>Series 2 (70% EtOH, T = 30°C)</i>				
S1	5	6.405	1186.560	573.570
S2	10	8.767	1294.360	740.670
S3	15	9.171	1324.900	831.330
S4	20	11.404	1343.900	942.440
S5	30	12.854	1356.460	1037.230
S6	60	15.383	1370.840	1202.710
S7	90	16.751	1375.770	1293.710
S8	120	17.508	1379.360	1341.510
S9	150	18.900	1384.230	1427.040
<i>Series 3 (98% EtOH, T = 20°C)</i>				
S1''	5	0.5174	351.070	68.540
S2''	10	0.665	436.670	81.480
S3''	15	0.818	497.870	90.370
S4''	20	0.580	547.180	98.250
S5''	30	0.819	616.760	108.380

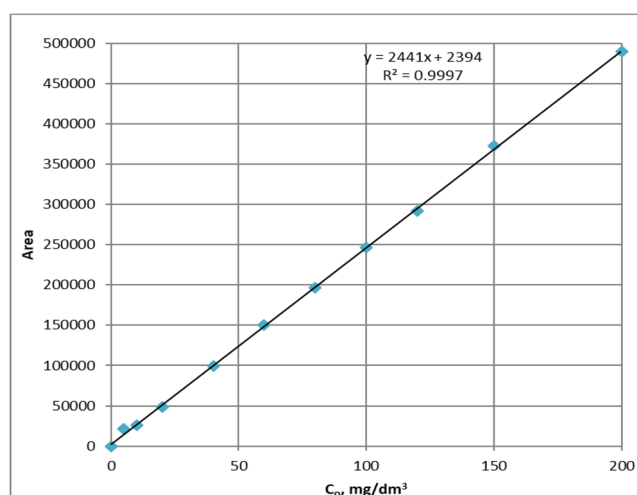
S6''	60	1.406	769.540	132.160
S7''	90	2.733	849.890	146.860
S8''	120	2.733	899.800	155.390
S9''	150	4.757	1241.900	223.060
<b>Series 4 (H<sub>2</sub>O, T = 20°C)</b>				
S1'''	5	8.800	234.000	1109.000
S2'''	10	6.340	248.000	274.000
S3'''	15	9.790	264.000	1110.000
S4'''	20	7.640	339.000	169.000
S5'''	30	11.200	274.000	1202.000
S6'''	60	11.700	341.000	1075.000
S7'''	90	12.400	315.000	1560.000
S8'''	120	15.300	309.000	1529.000
S9'''	150	14.450	440.000	1512.000



A



B



C

**Figure S1.** Calibration curves of the standard compounds A. (+)-catechin hydrate; B. (-)-epigallocatechin and C. quercetin hydrate.