

Supplementary Information

Figure S1

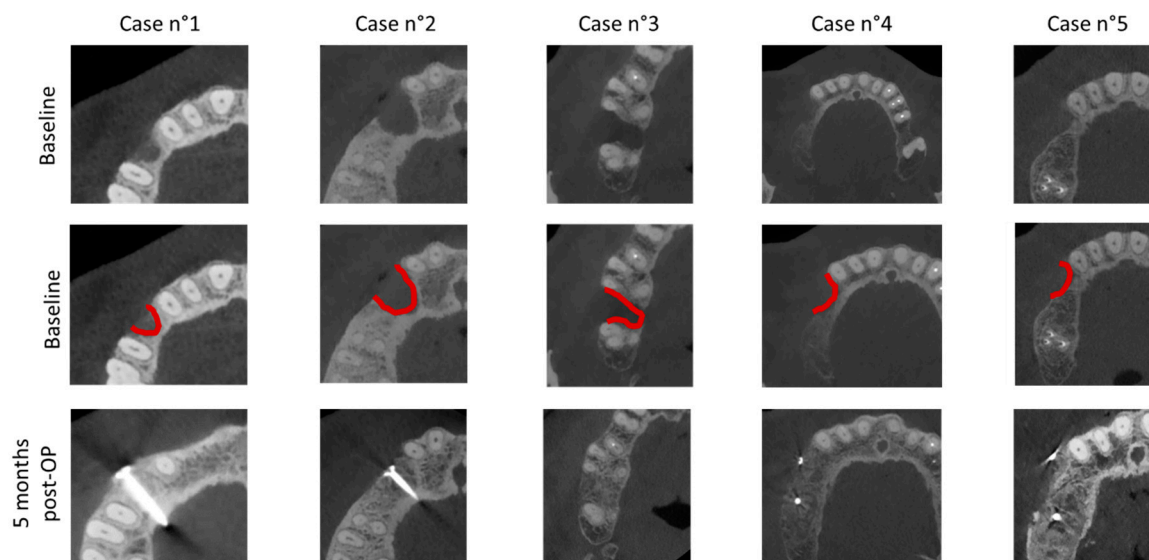


Figure S1: Collated transversal CBCT sections of Patients 1 to 5 illustrating comparable and consistent baseline defect morphology and defect location between individual patients. The upper and middle rows illustrate the baseline defect morphology as 3 wall horizontal defects in all patients. The lower line documents the 5 months post-block augmentation CBCT follow-up.

Figure S2

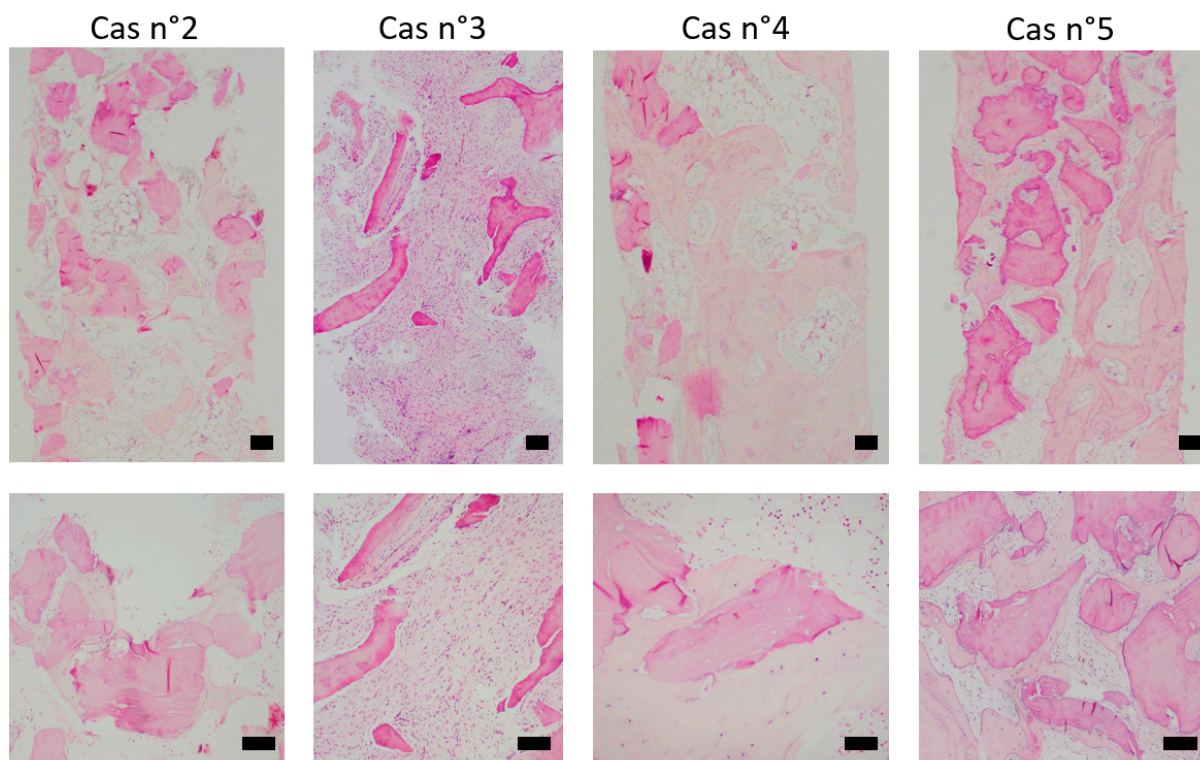


Figure S2: Collated histological cross section overviews (upper row) and magnified regions (lower rows) of core biopsies of patients 2 to 5. Scale bar in the overview and magnified images designate 500 and 200 μ m, respectively. The corresponding images of patient 1 are shown in the main part of the manuscript.