

Supplementary Materials

Figure S1. Absence of secondary caries or erosion or abfraction between IRR and CR in dental restorations

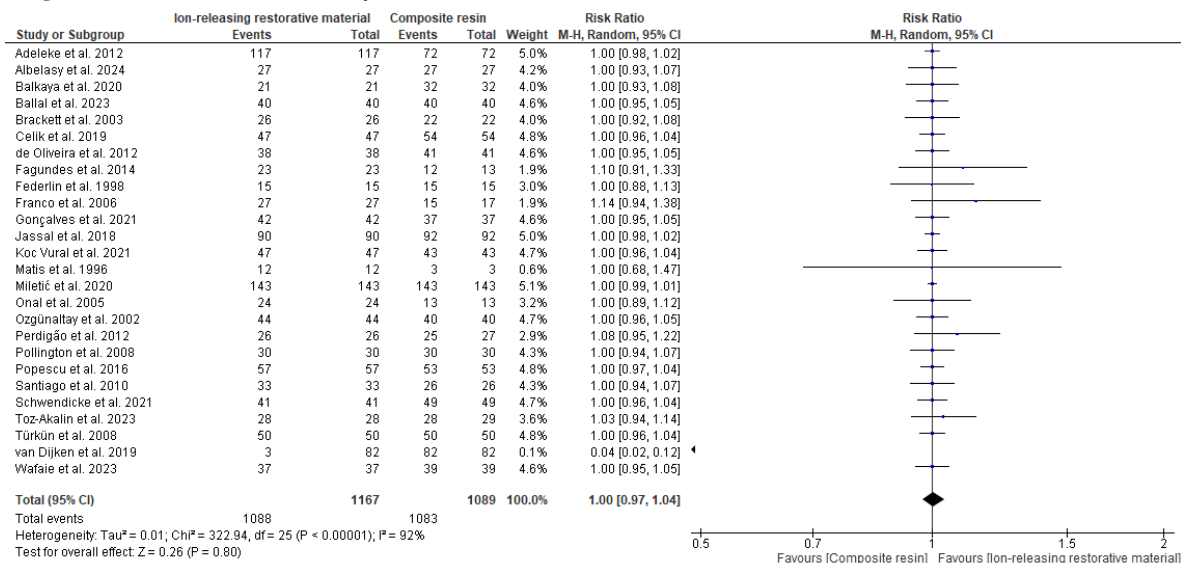


Figure S2. Absence of marginal discoloration between IRR and CR in dental restorations

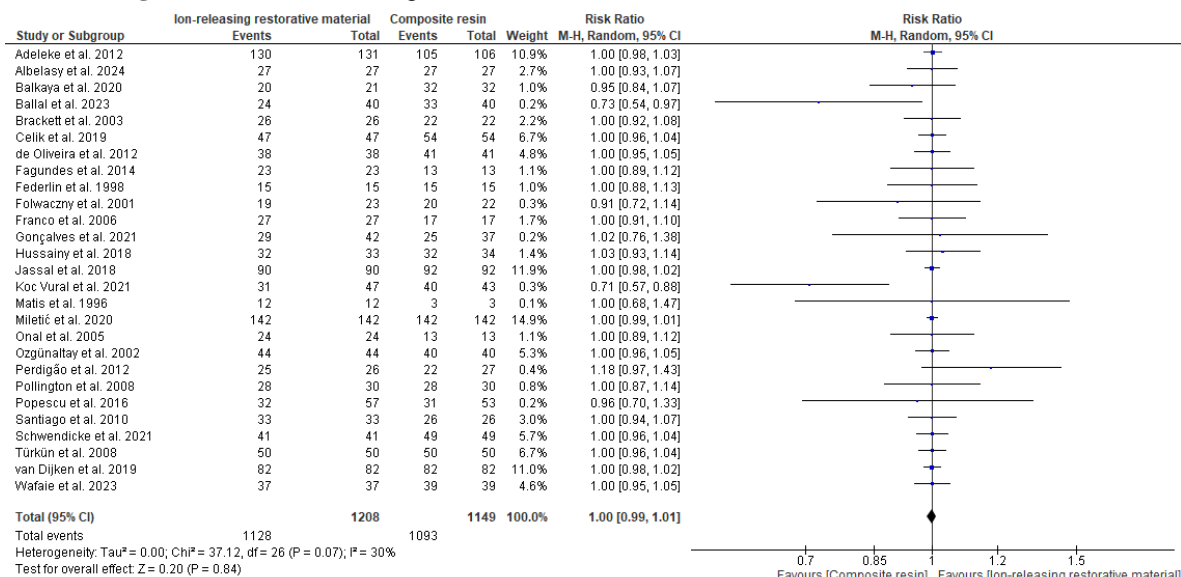


Figure S3. Adequate of marginal adaptation between IRR and CR in dental restorations

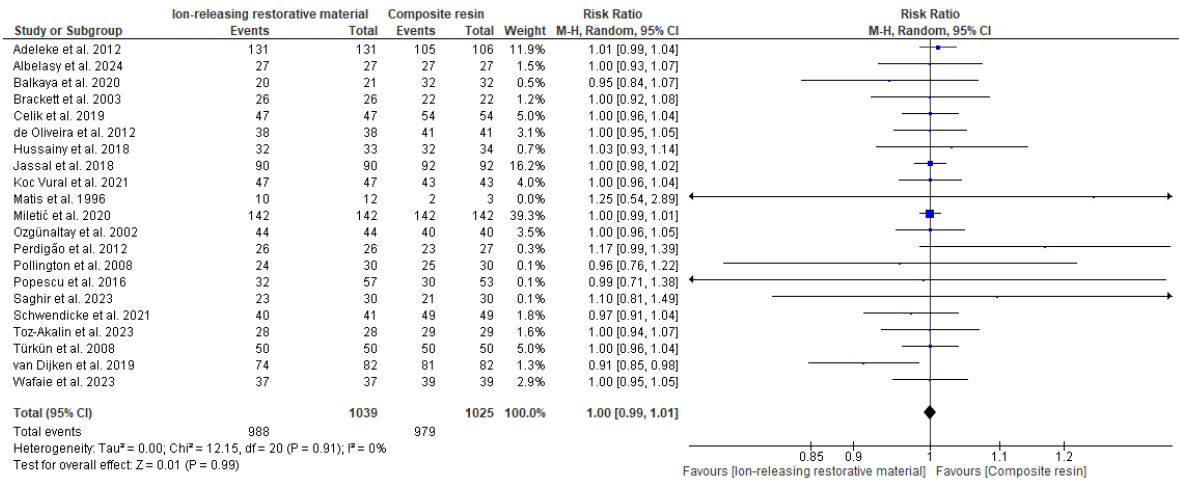


Figure S4. Adequate marginal or tooth integrity between IRR and CR in dental restorations

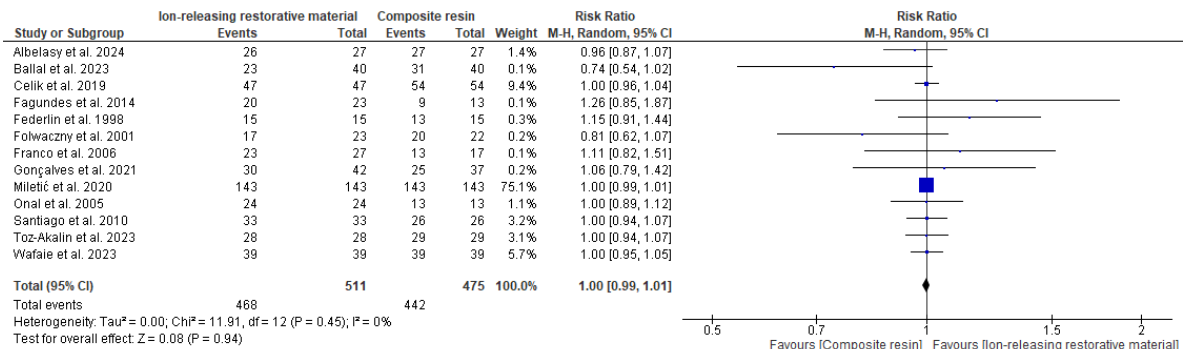


Figure S5. Adequate color or translucency between IRR and CR in dental restorations

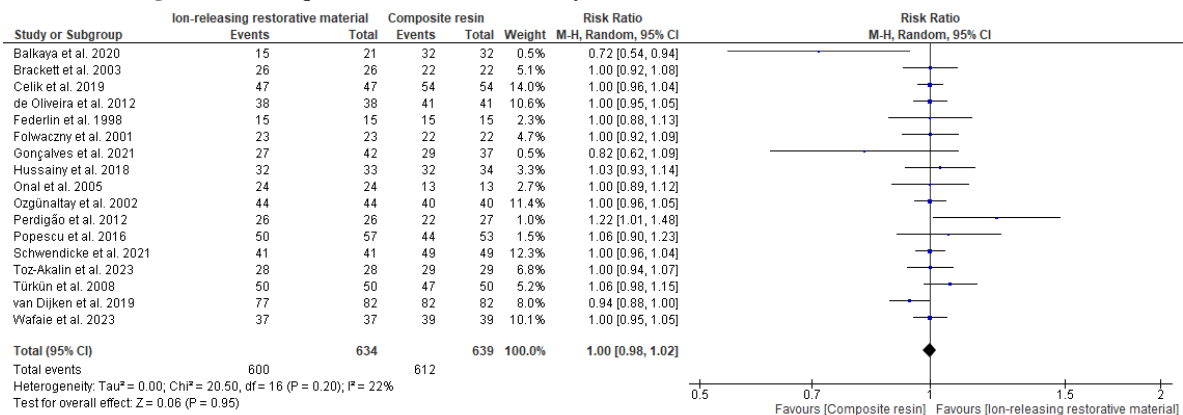


Figure S6. Proper surface texture or luster between IRR and CR in dental restorations

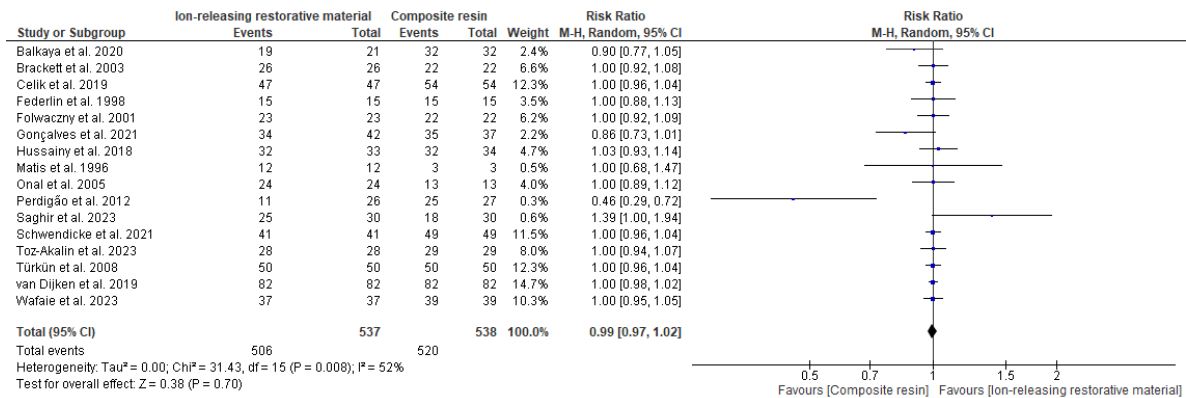


Figure S7. Proper surface staining between IRR and CR in dental restorations

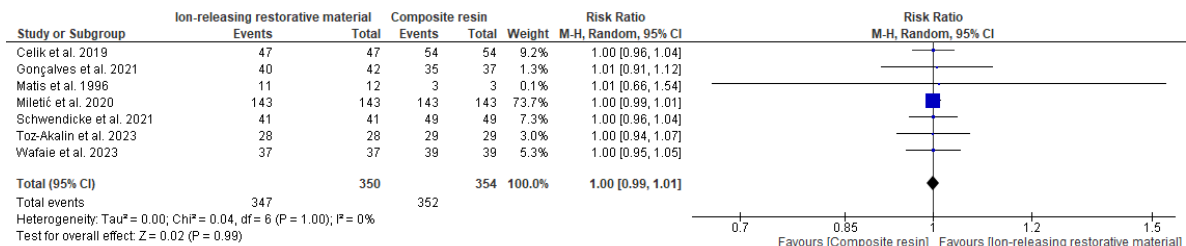


Figure S8. Retention between IRR and CR in dental restorations

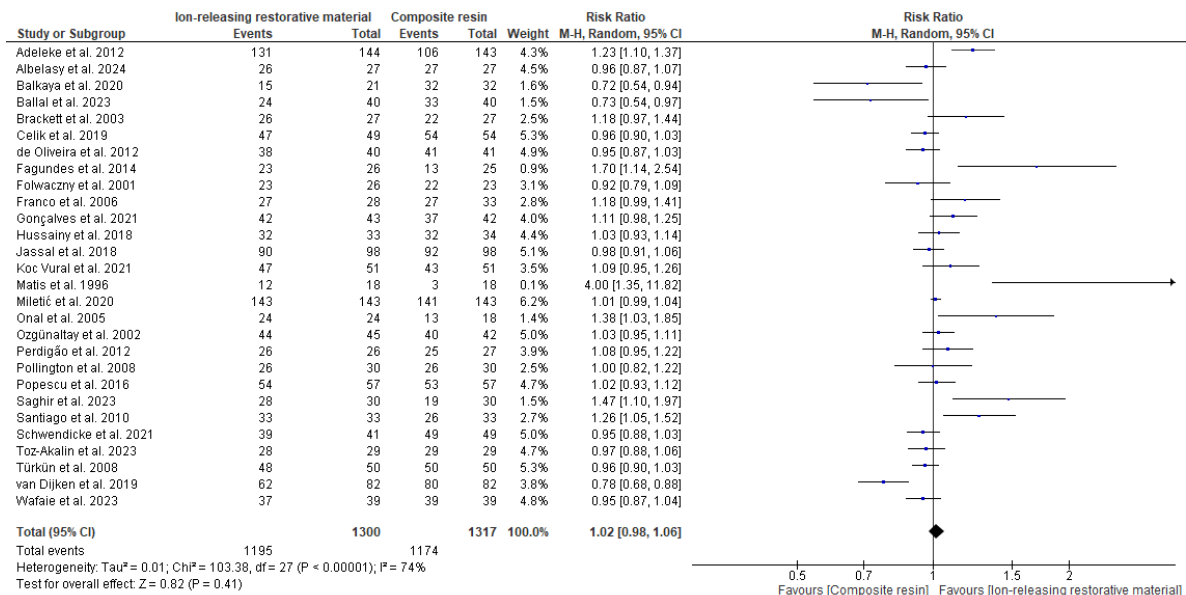


Figure S9. Absence of wear between IRR and CR in dental restorations

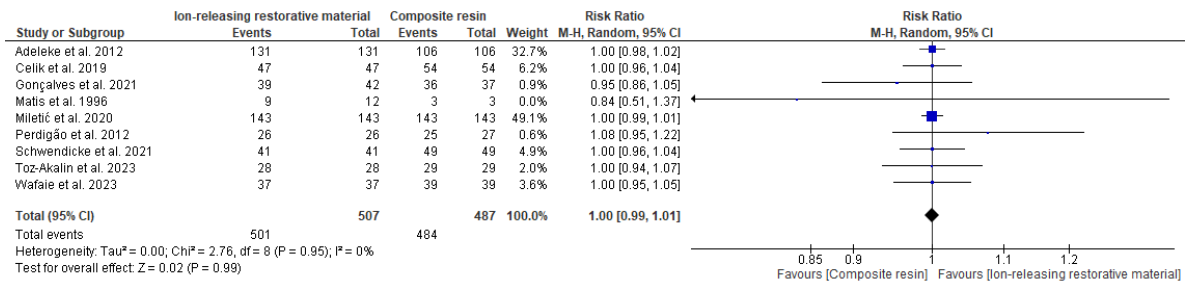


Figure S10. Proper anatomic form between IRR and CR in dental restorations

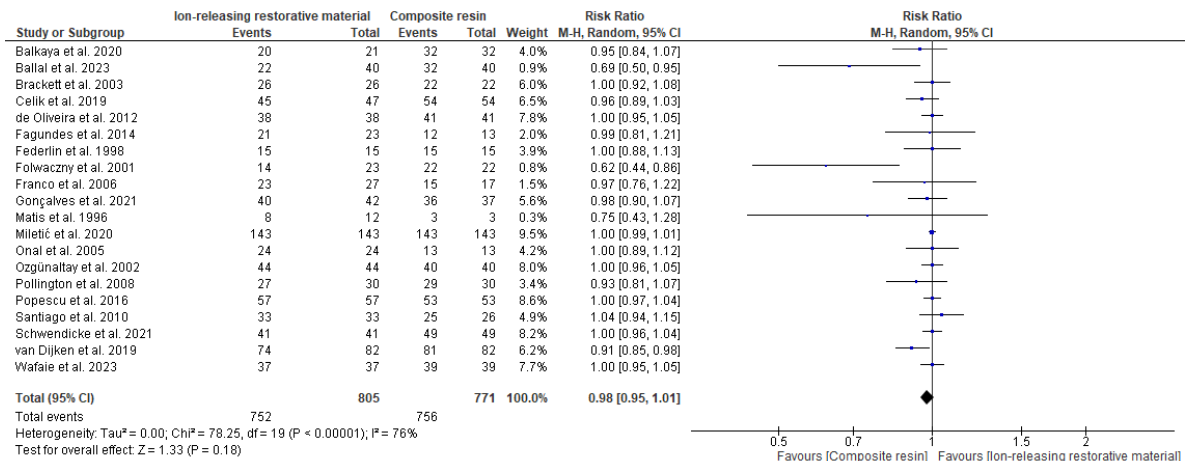


Figure S11. Absence of sensibility between IRR and CR in dental restorations

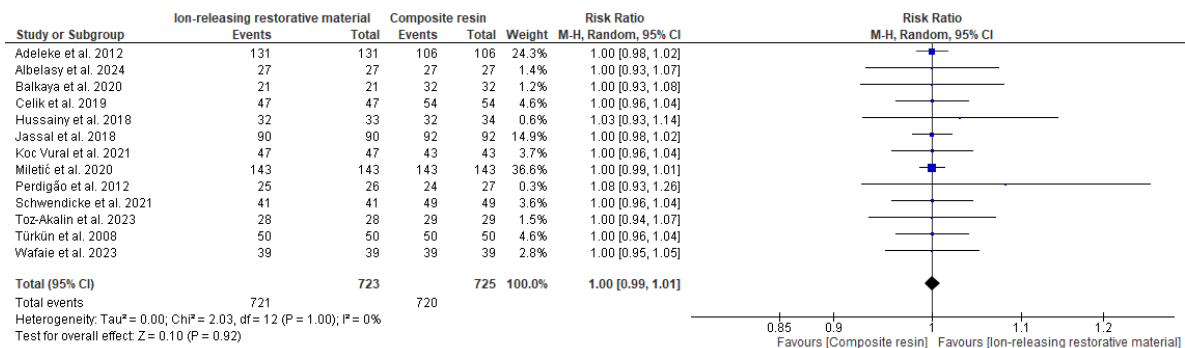


Figure S12. Adequate periodontal tissue between IRR and CR in dental restorations

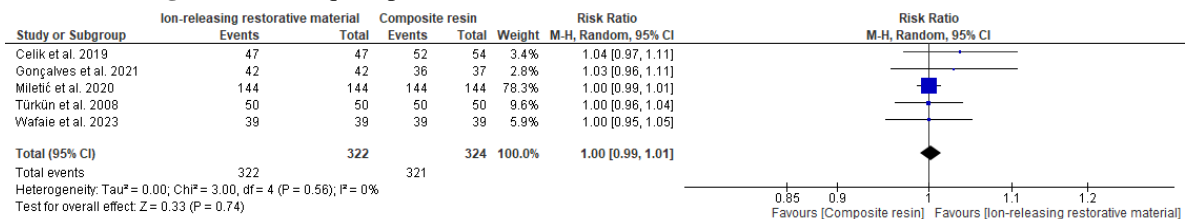


Figure S13. Absence of secondary caries or erosion or abfraction between IRR and CR in dental restorations by restorative material

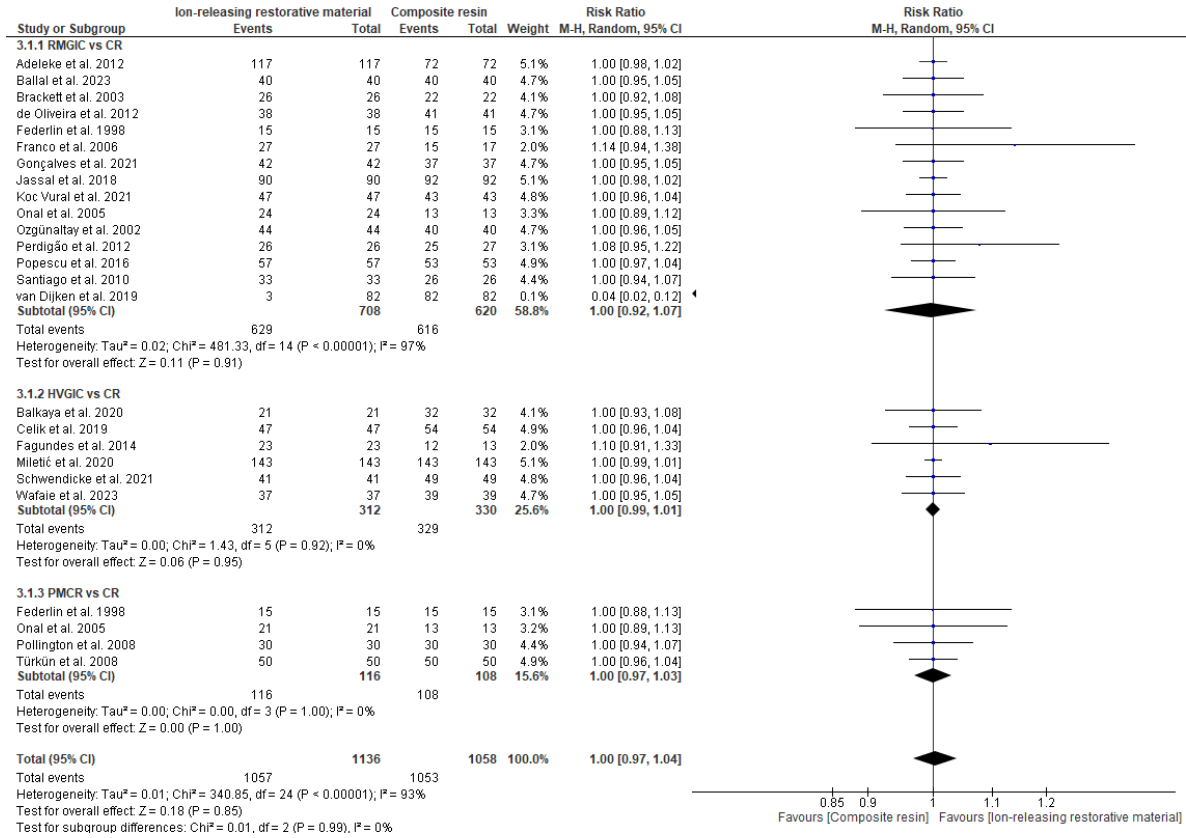


Figure S14. Absence of marginal discoloration between IRR and CR in dental restorations by restorative material

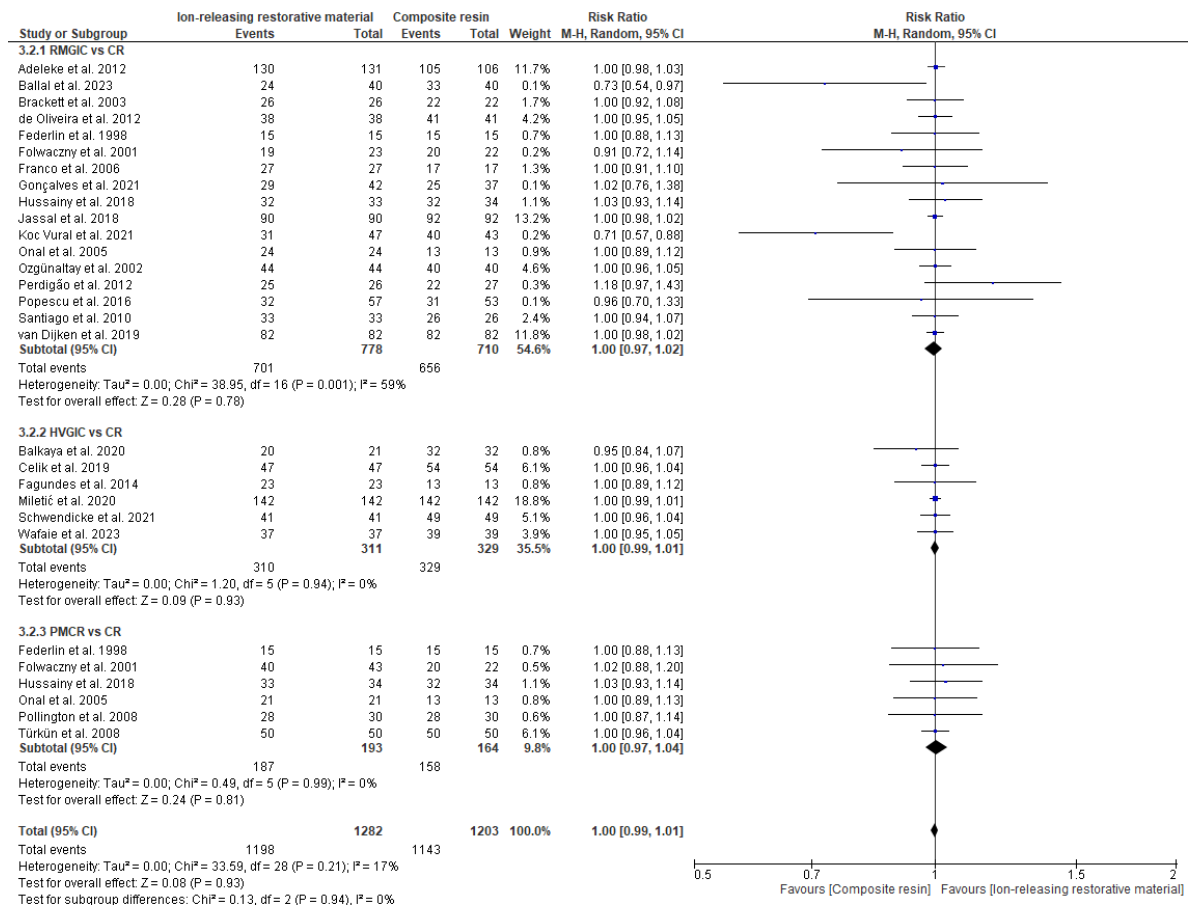


Figure S15. Adequate of marginal adaptation between IRR and CR in dental restorations by restorative material

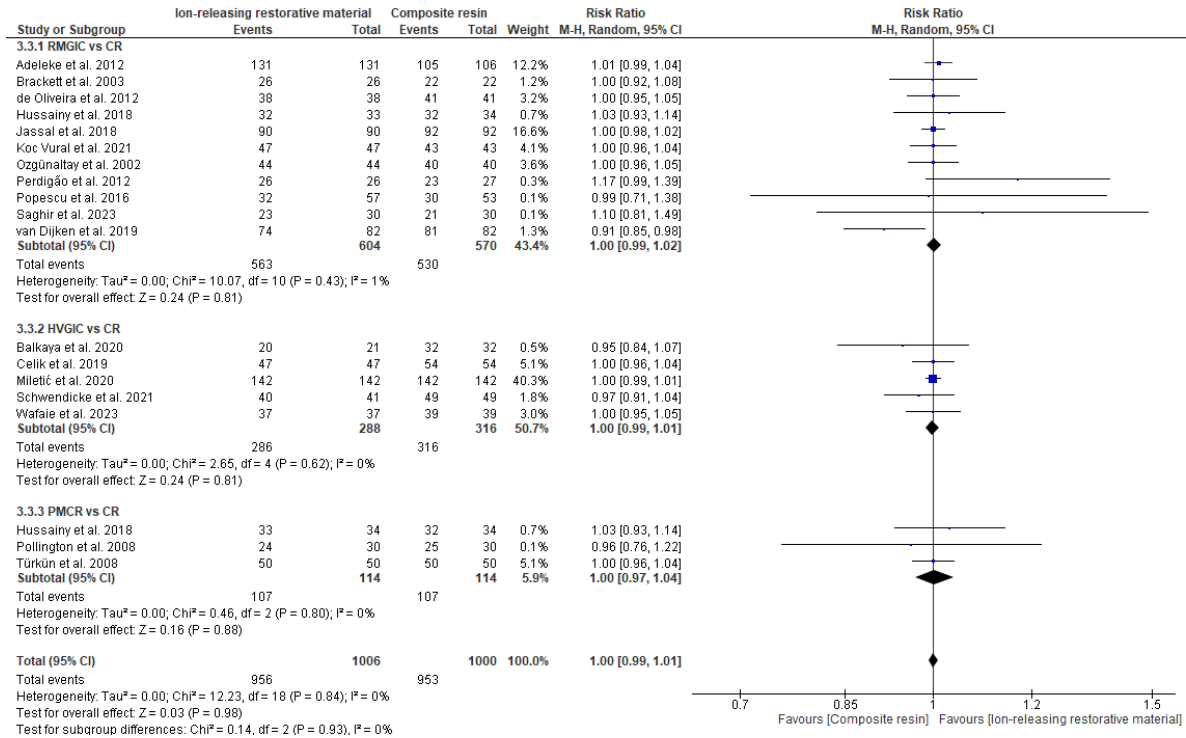


Figure S16. Adequate marginal or tooth integrity between IRR and CR in dental restorations by restorative material

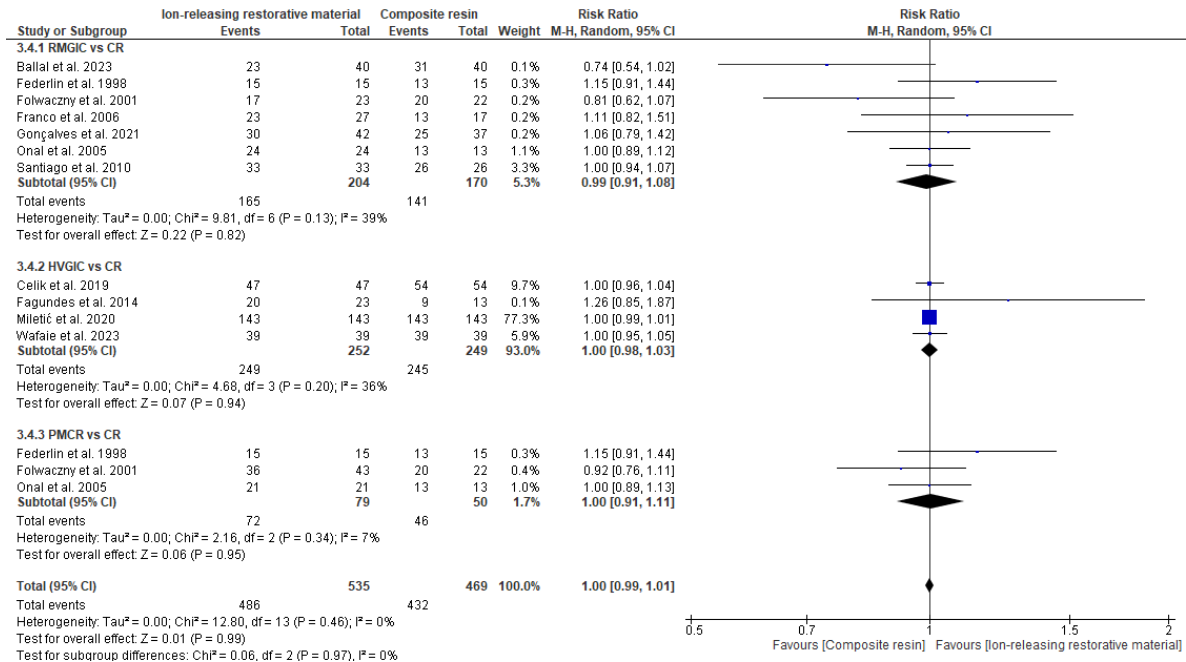


Figure S17. Adequate color or translucency between IRR and CR in dental restorations by restorative material

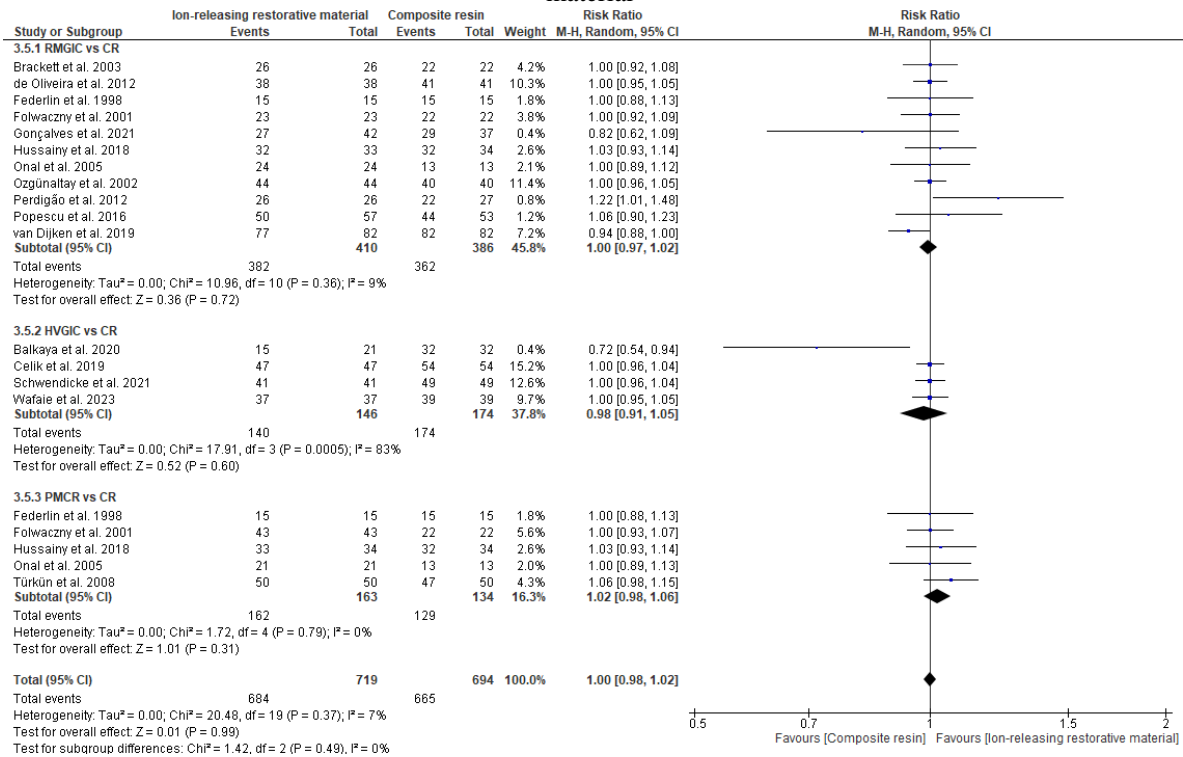


Figure S18. Proper surface texture or luster between IRR and CR in dental restorations by restorative material

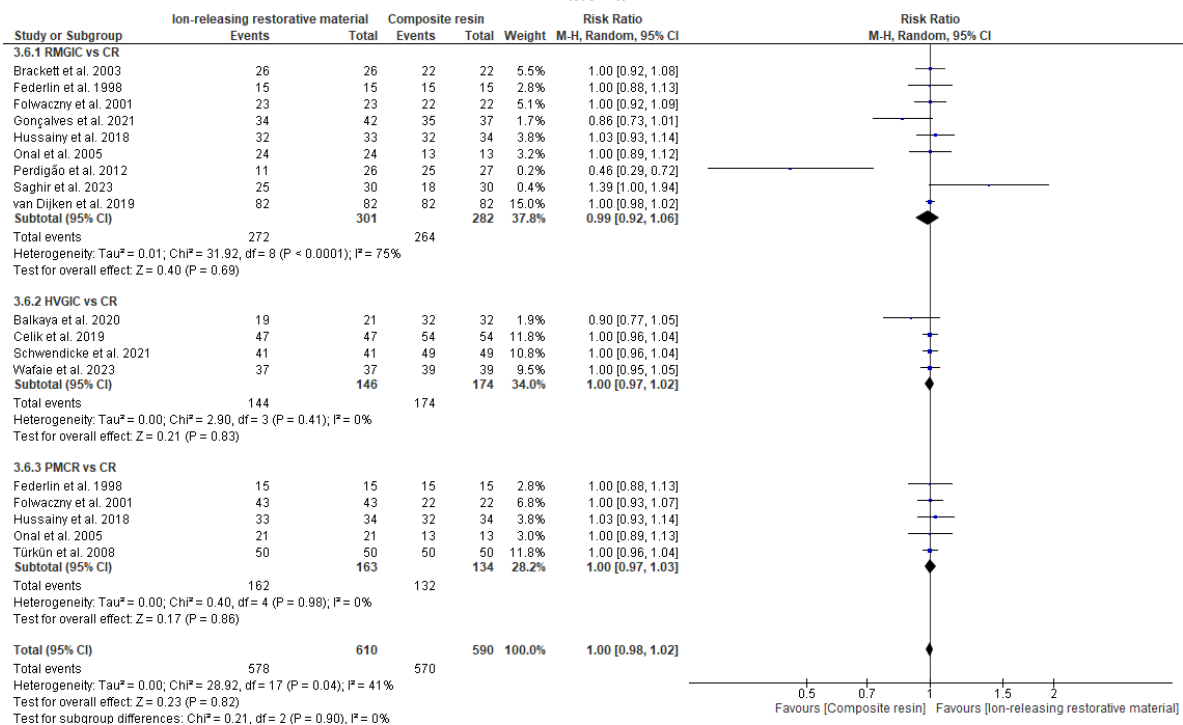


Figure S19. Proper surface staining between IRR and CR in dental restorations by restorative material

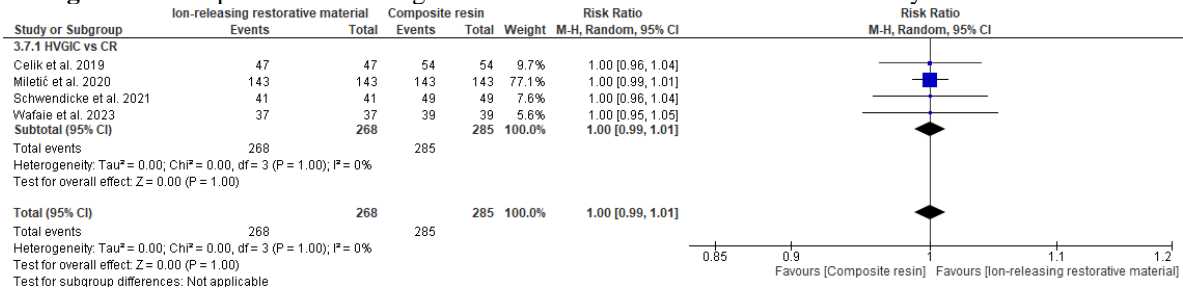


Figure S20. Retention between IRR and CR in dental restorations by restorative material

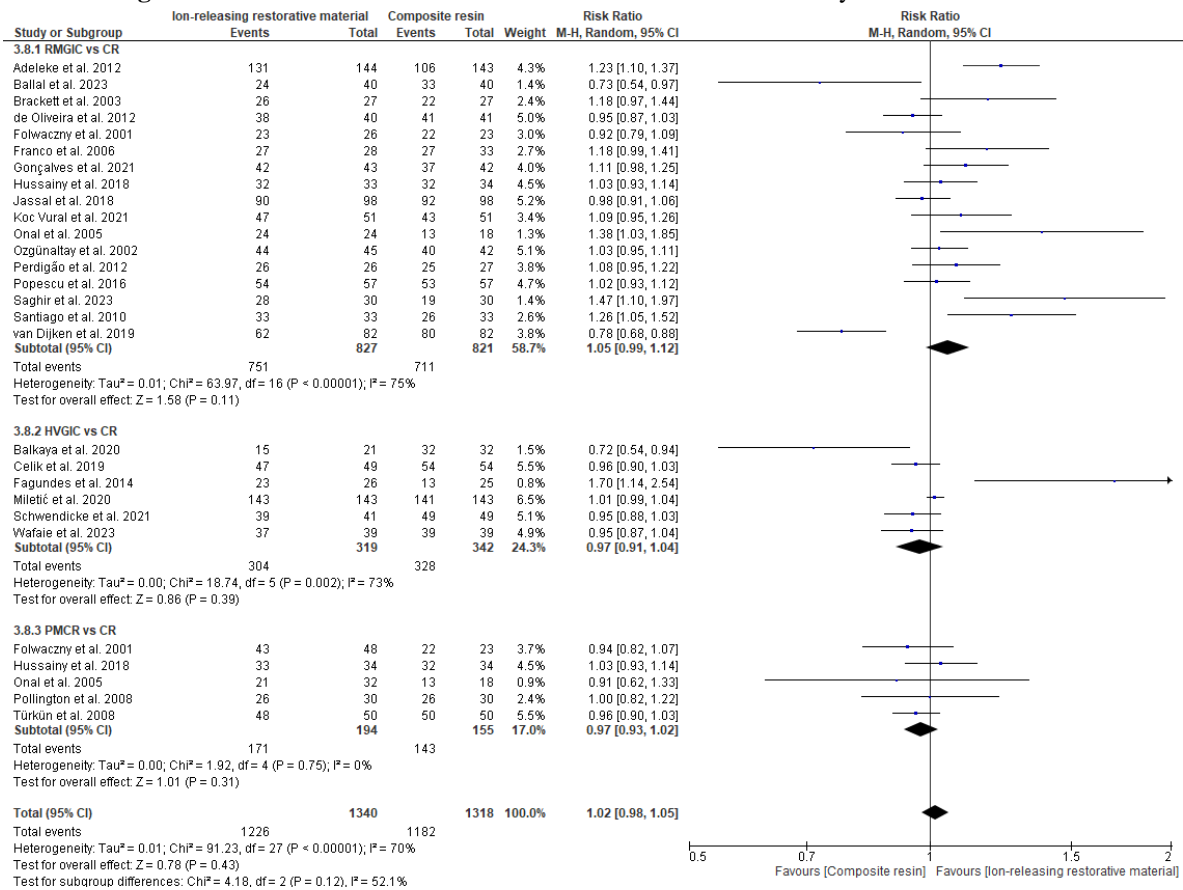


Figure S21. Absence of wear between IRR and CR in dental restorations by restorative material

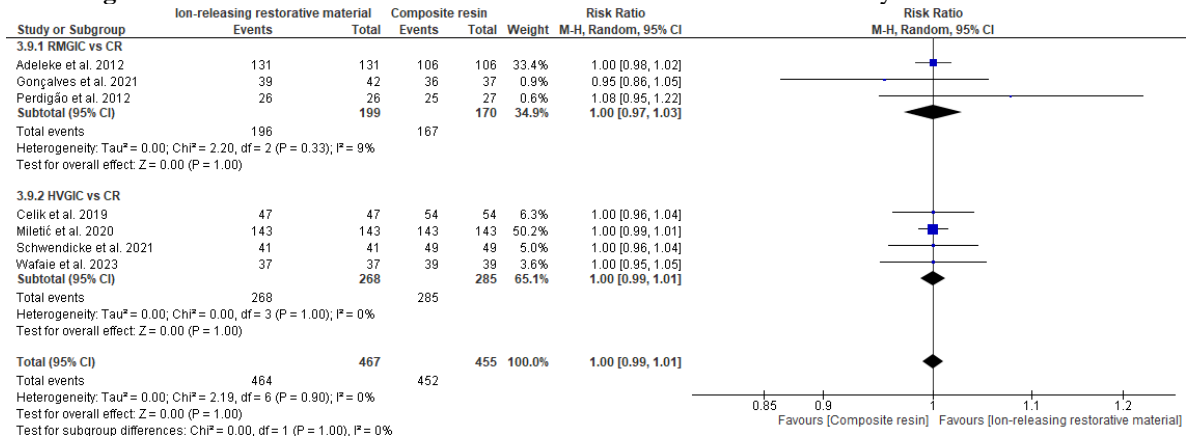


Figure S22. Proper anatomic form between IRR and CR in dental restorations by restorative material

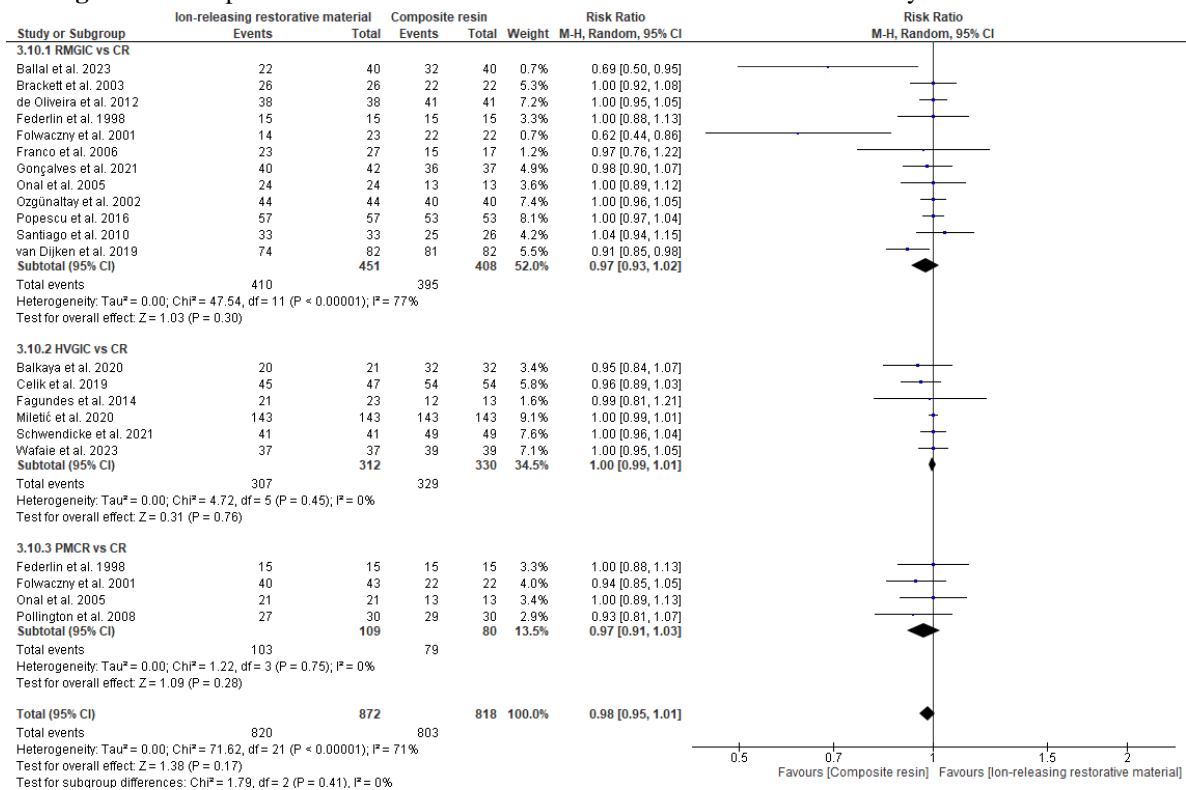


Figure S23. Absence of sensibility between IRR and CR in dental restorations by restorative material

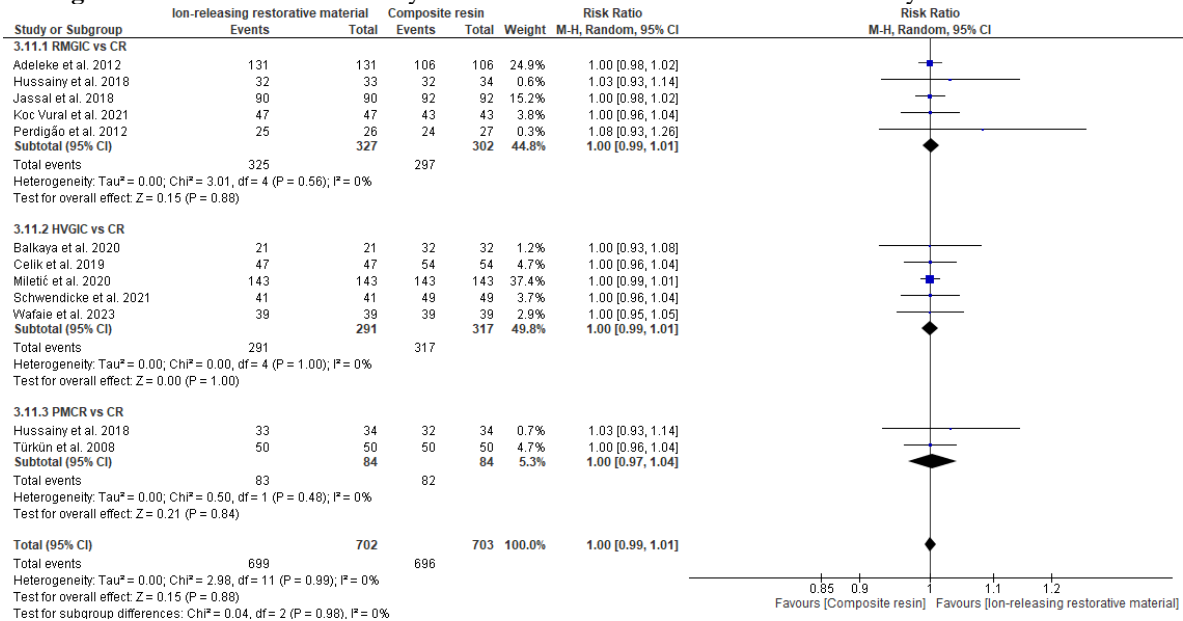


Figure S24. Adequate periodontal tissue between IRR and CR in dental restorations by restorative material

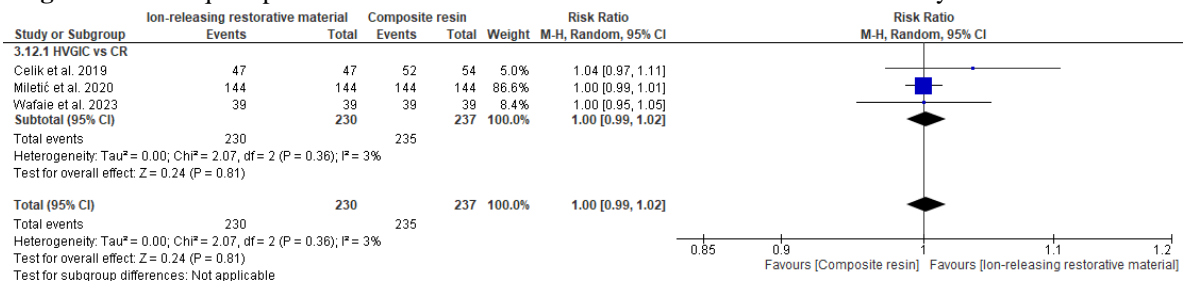


Figure S25. Absence of secondary caries or erosion or abfraction between IRR and CR in dental restorations by cavity types

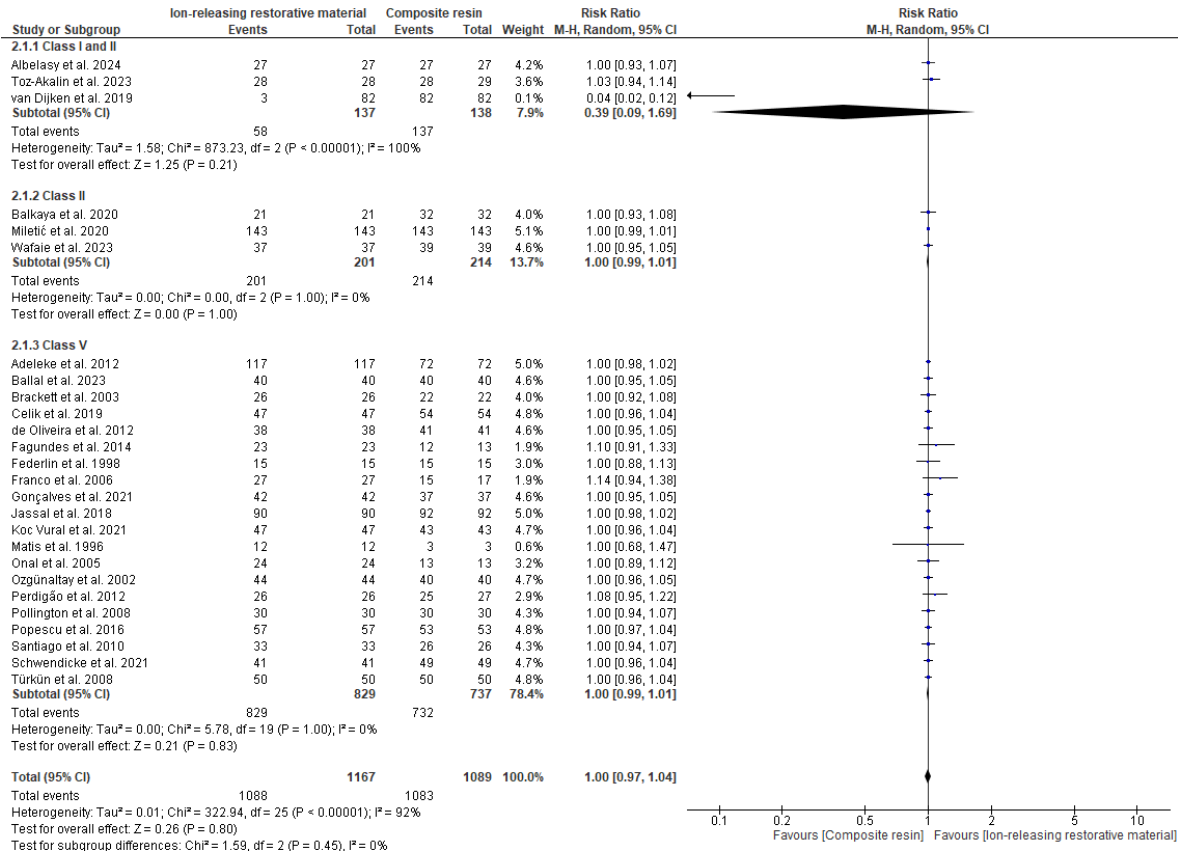


Figure S26. Absence of marginal discoloration between IRR and CR in dental restorations by cavity types

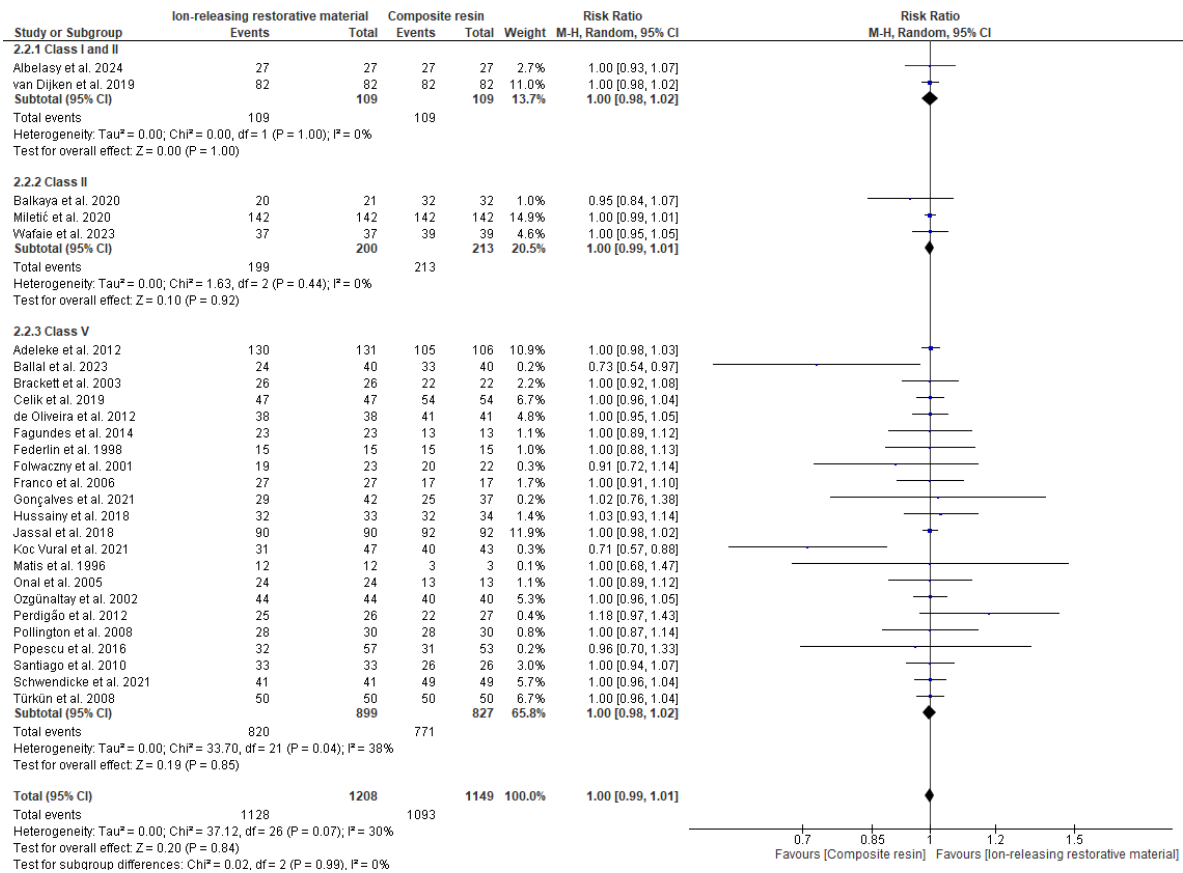


Figure S27. Adequate of marginal adaptation between IRR and CR in dental restorations by cavity types

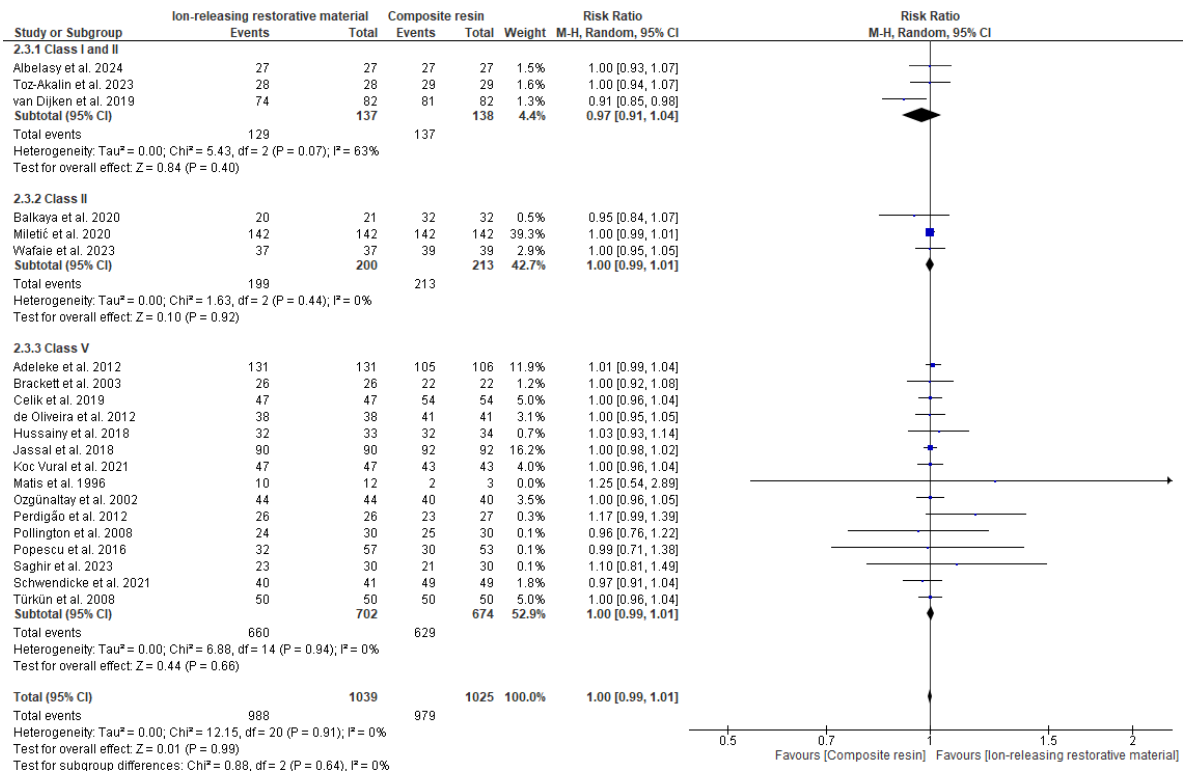


Figure S28. Adequate marginal or tooth integrity between IRR and CR in dental restorations by cavity types

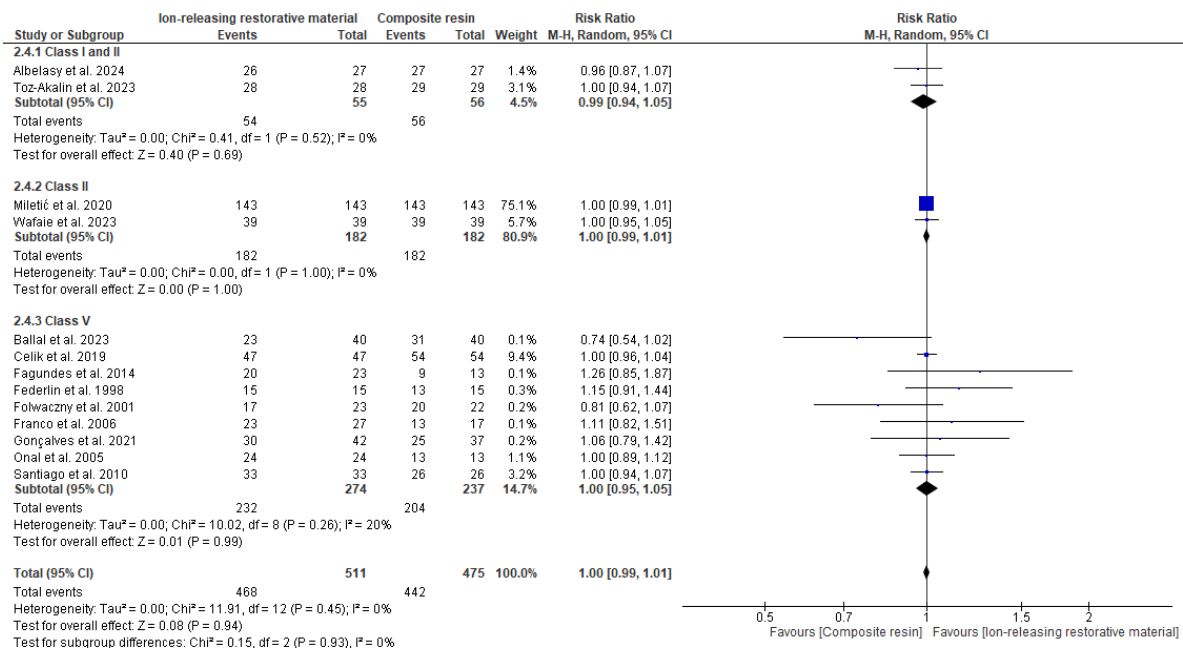


Figure S29. Adequate color or translucency between IRR and CR in dental restorations by cavity types

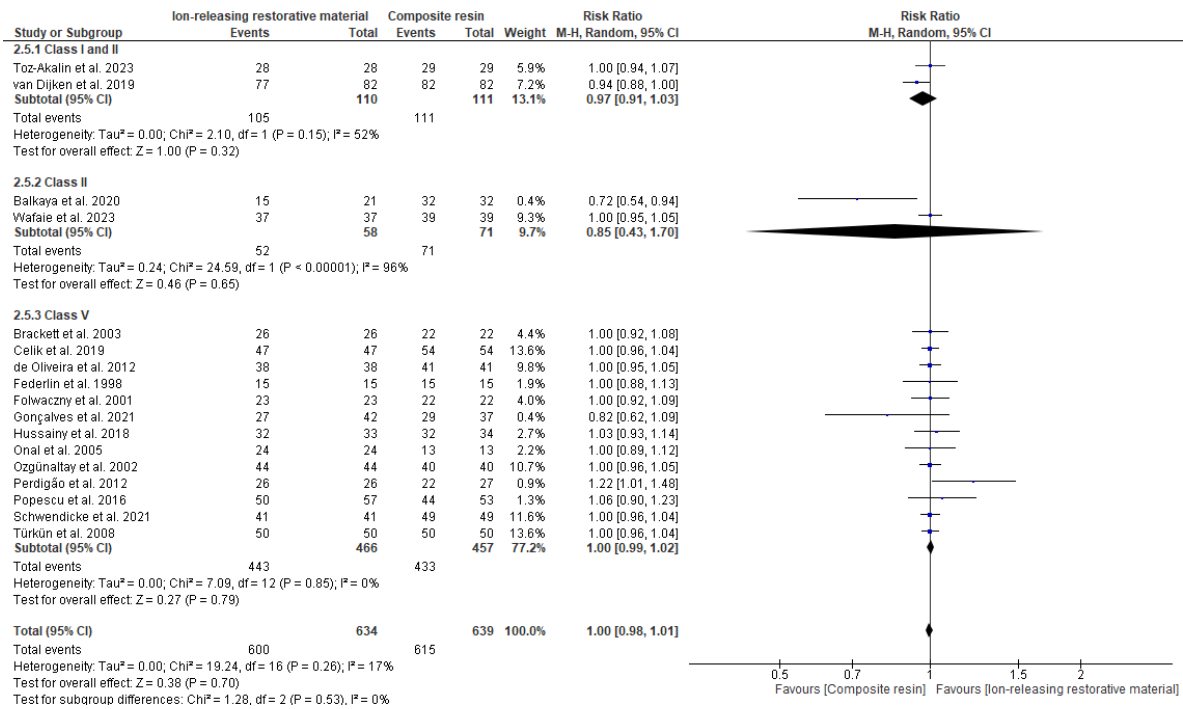


Figure S30. Proper surface texture or luster between IRR and CR in dental restorations by cavity types

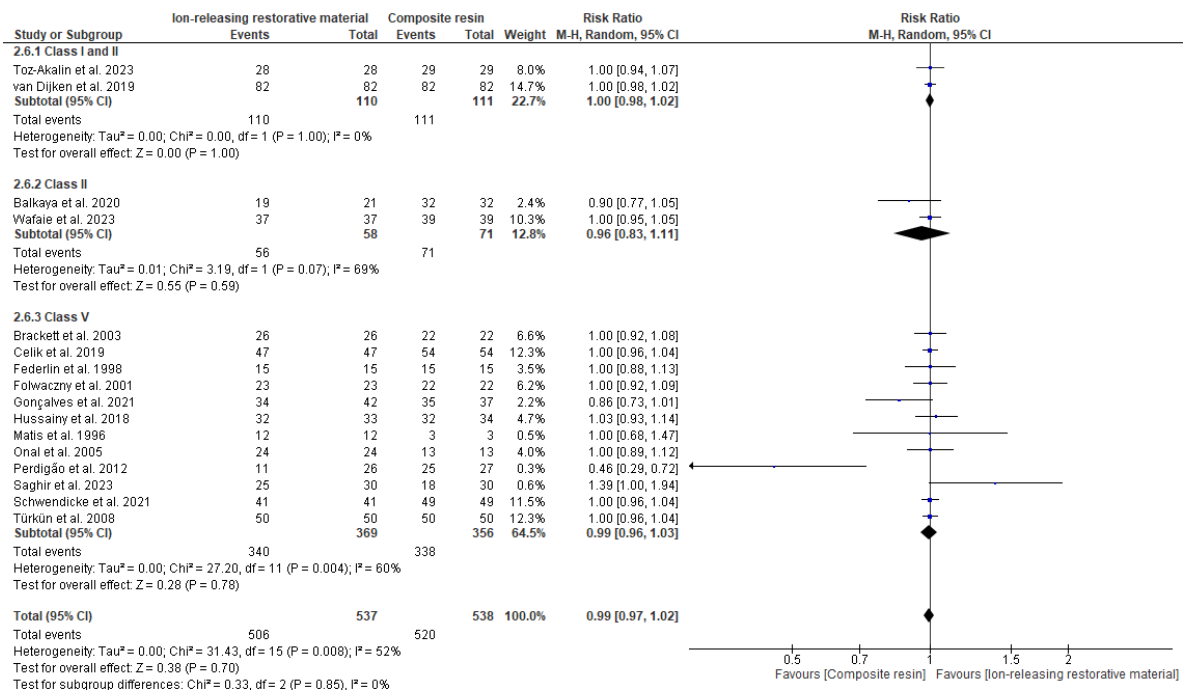


Figure S31. Proper surface staining between IRR and CR in dental restorations by cavity types

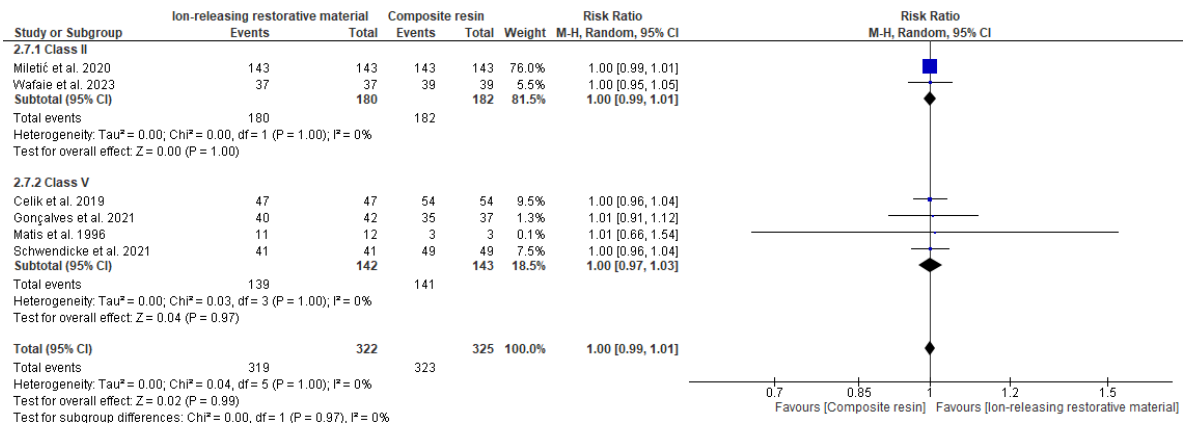


Figure S32. Retention between IRR and CR in dental restorations by cavity types

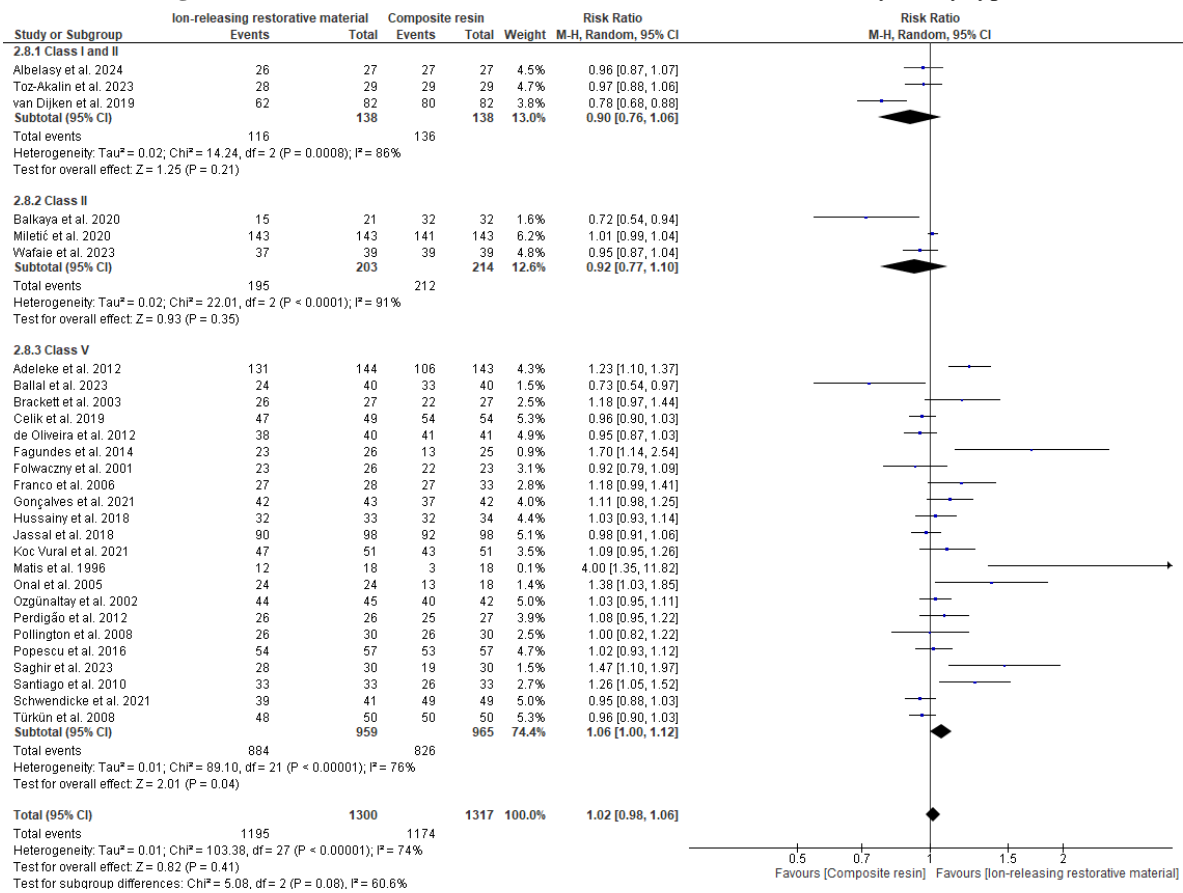


Figure S33. Absence of wear between IRR and CR in dental restorations by cavity types

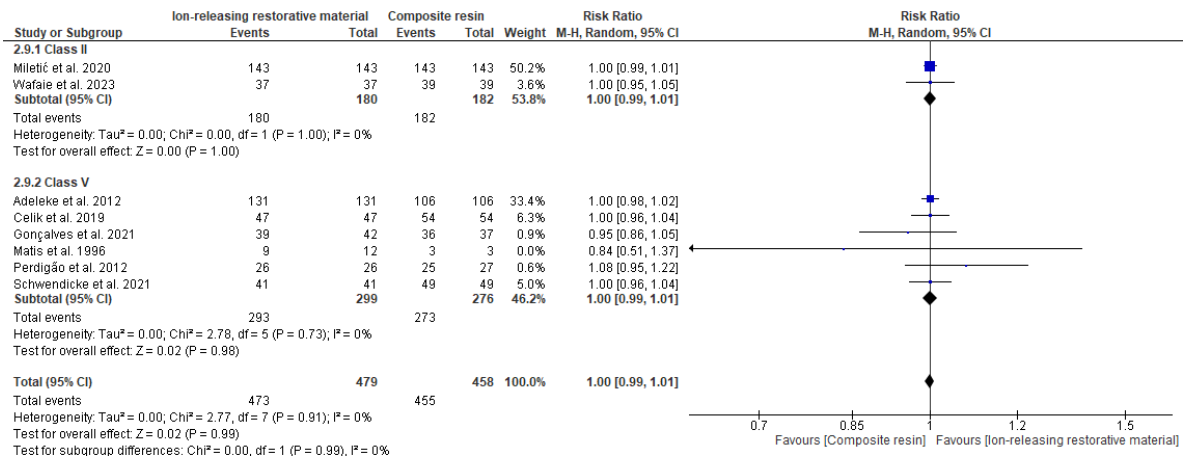


Figure S34. Proper anatomic form between IRR and CR in dental restorations by cavity types

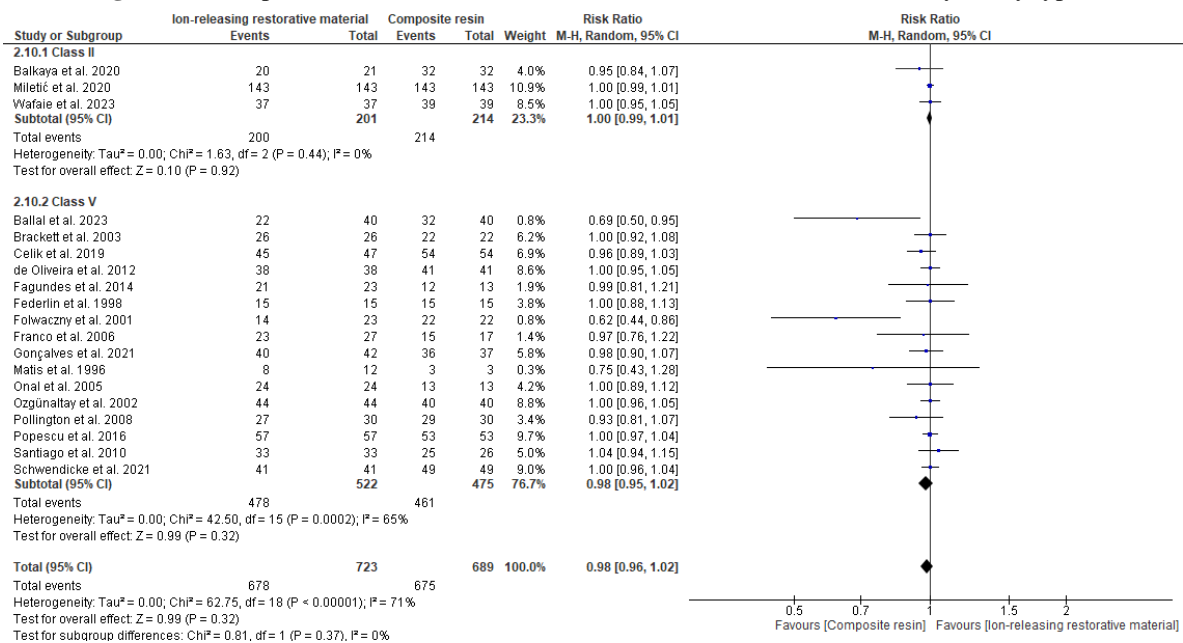


Figure S35. Absence of sensibility between IRR and CR in dental restorations by cavity types

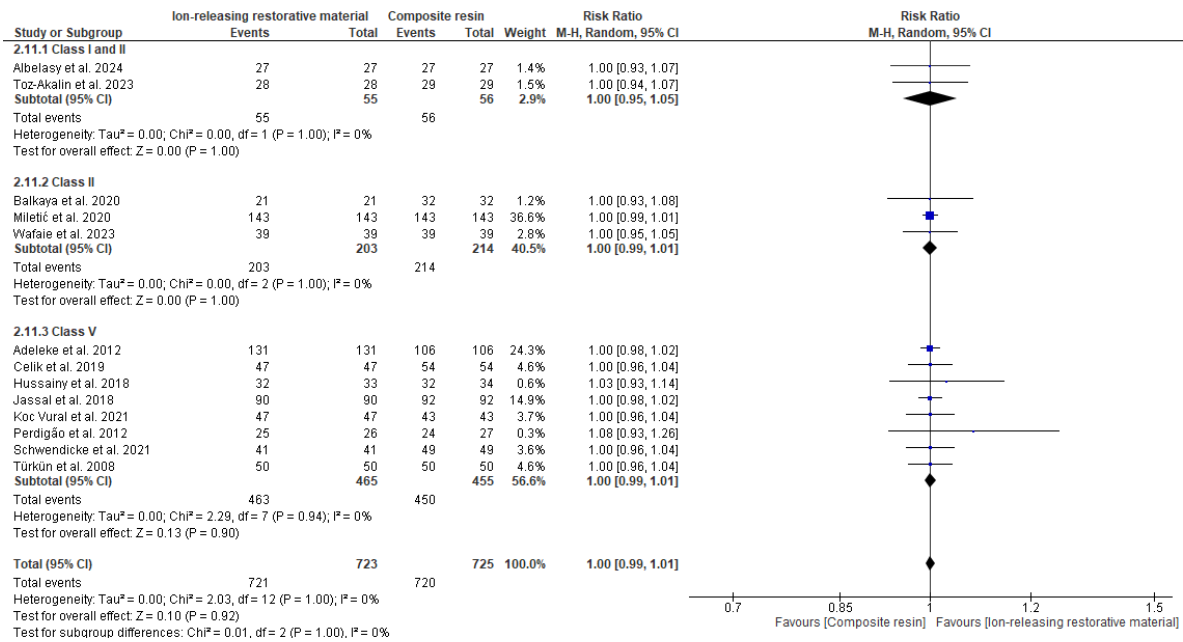


Figure S36. Adequate periodontal tissue between IRR and CR in dental restorations by cavity types

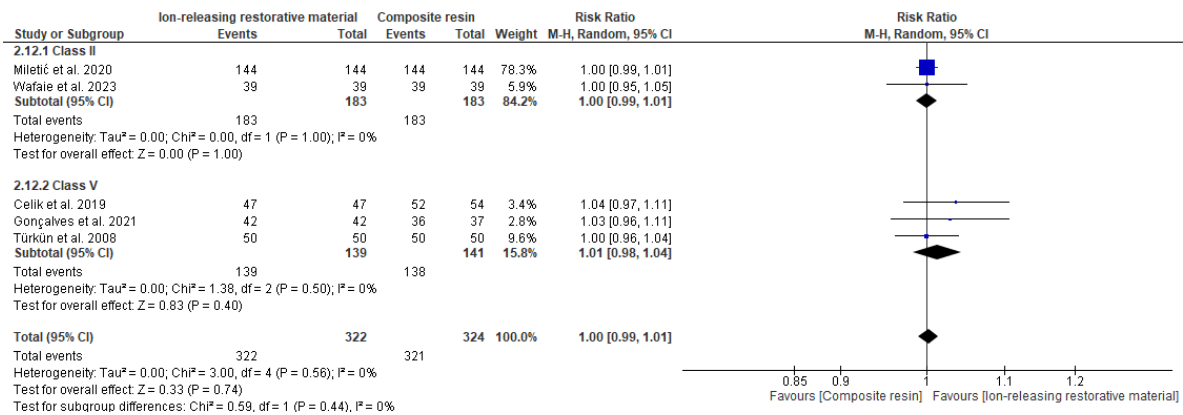


Figure S37. Absence of secondary caries or erosion or abfraction between IRR and CR in dental restorations by the evaluation criteria

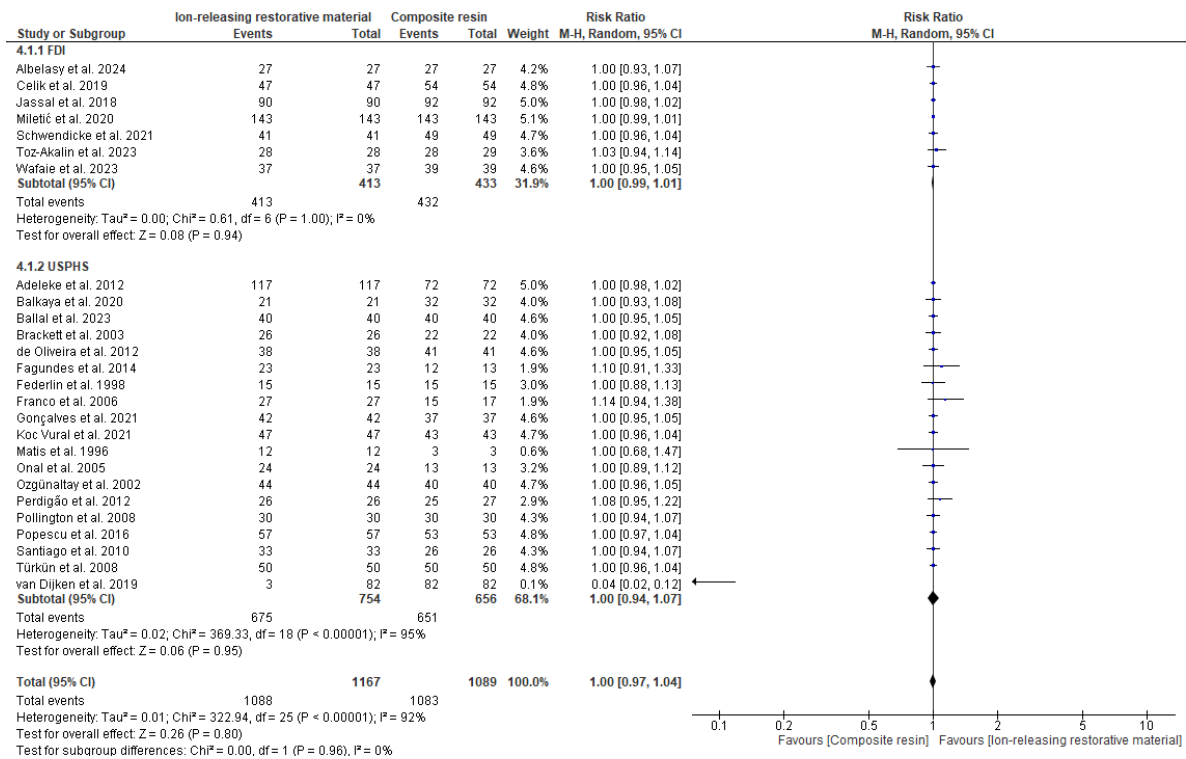


Figure S38. Absence of marginal discoloration between IRR and CR in dental restorations by the evaluation criteria

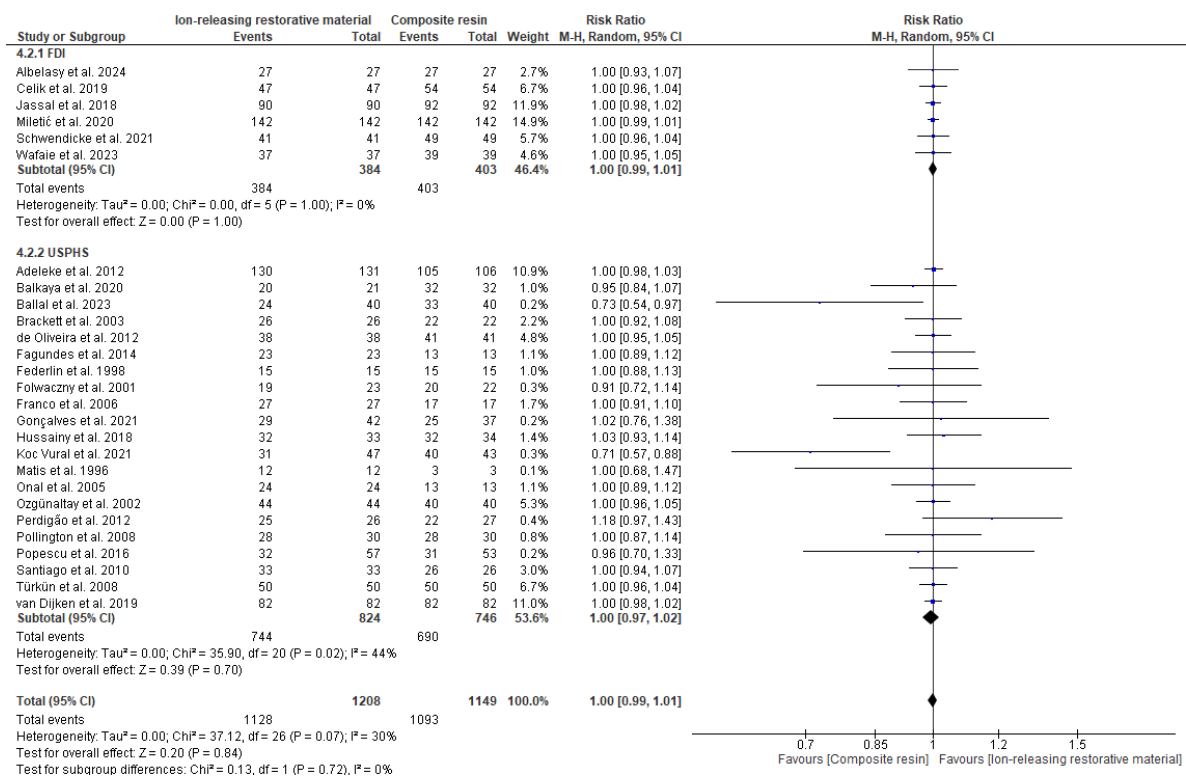


Figure S39. Adequate of marginal adaptation between IRR and CR in dental restorations by the evaluation criteria

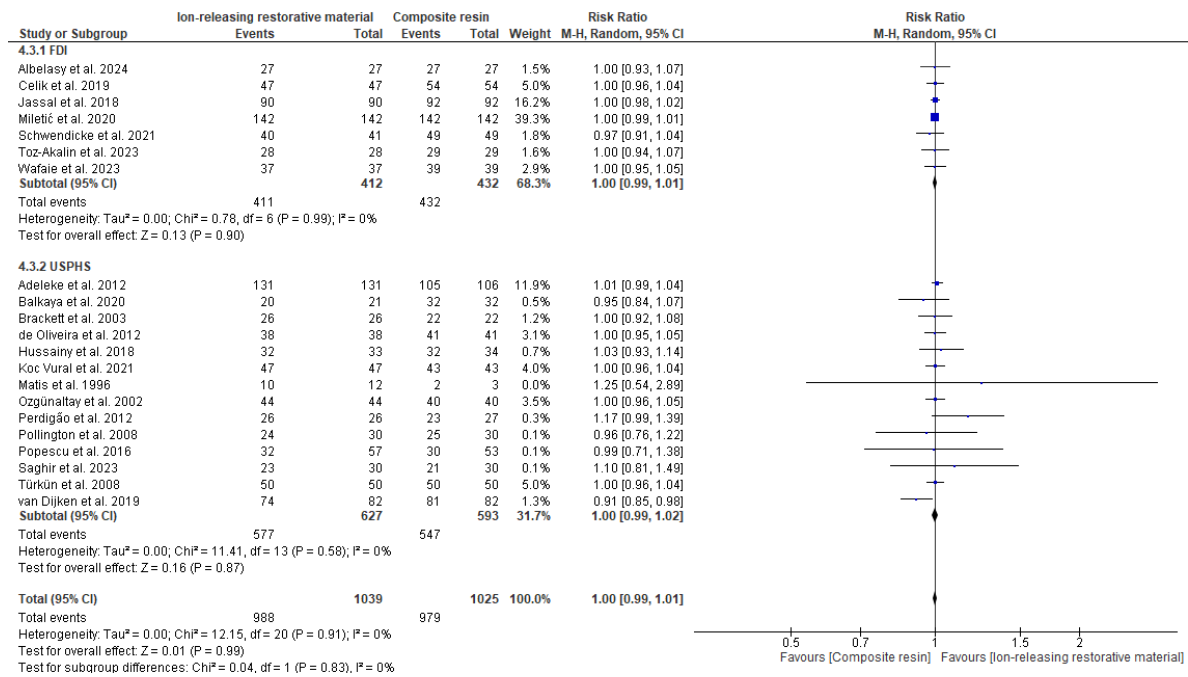


Figure S40. Adequate marginal or tooth integrity between IRR and CR in dental restorations by the evaluation criteria

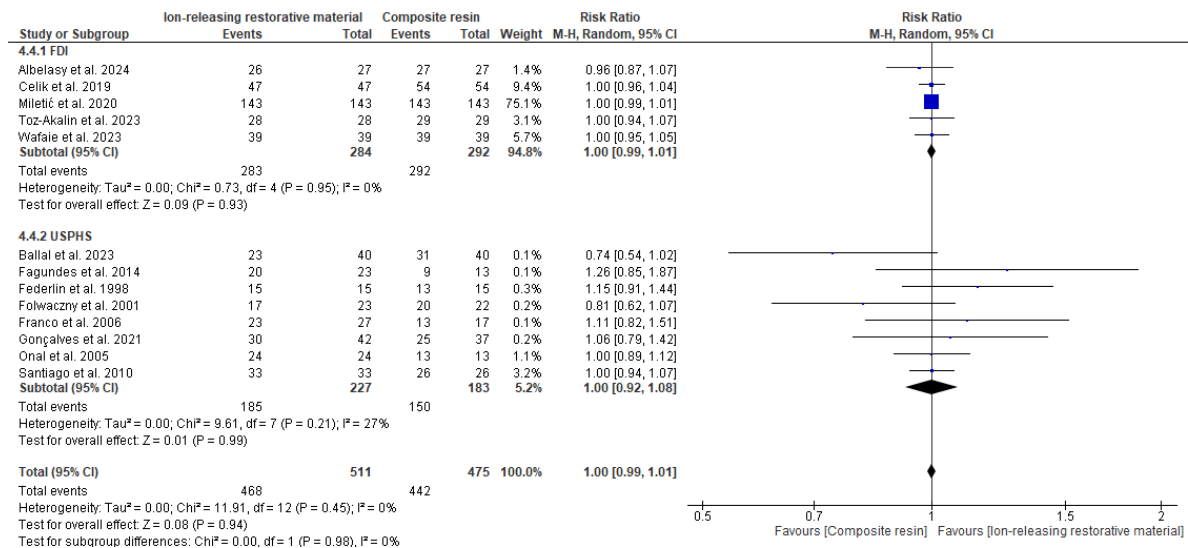


Figure S41. Adequate color or translucency between IRR and CR in dental restorations by the evaluation criteria

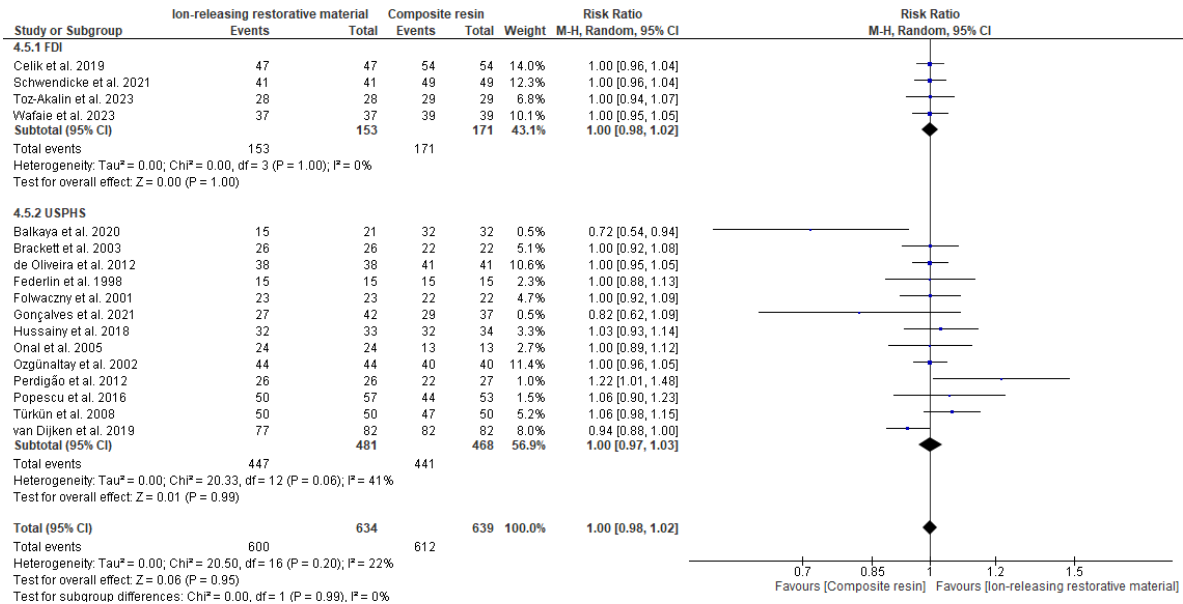


Figure S42. Proper surface texture or luster between IRR and CR in dental restorations by the evaluation criteria

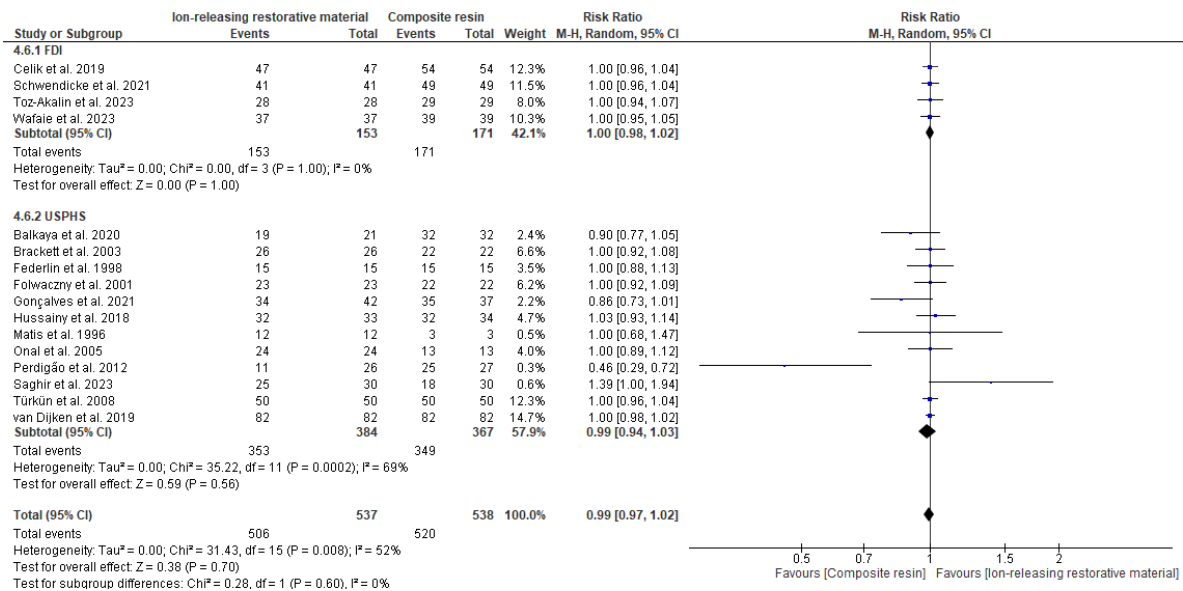


Figure S43. Proper surface staining between IRR and CR in dental restorations by the evaluation criteria

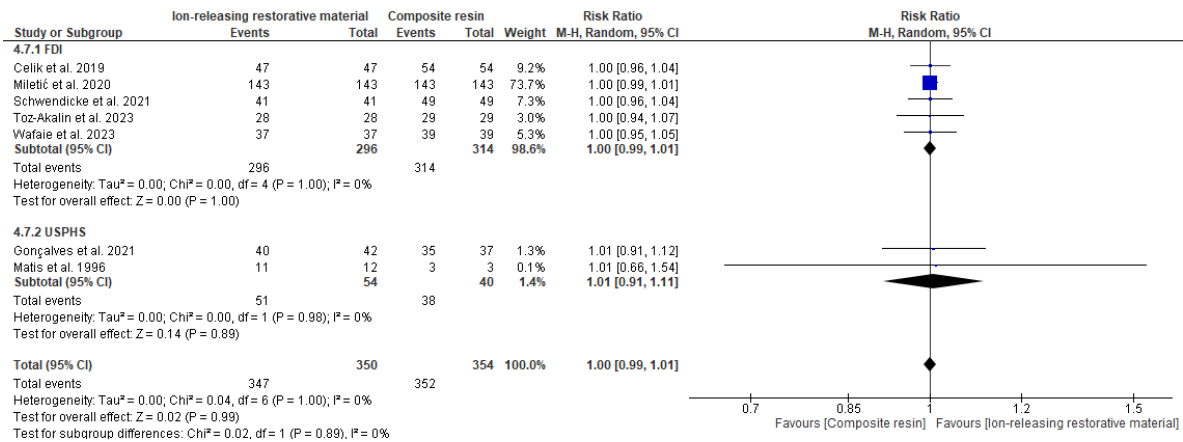


Figure S44. Retention between IRR and CR in dental restorations by the evaluation criteria

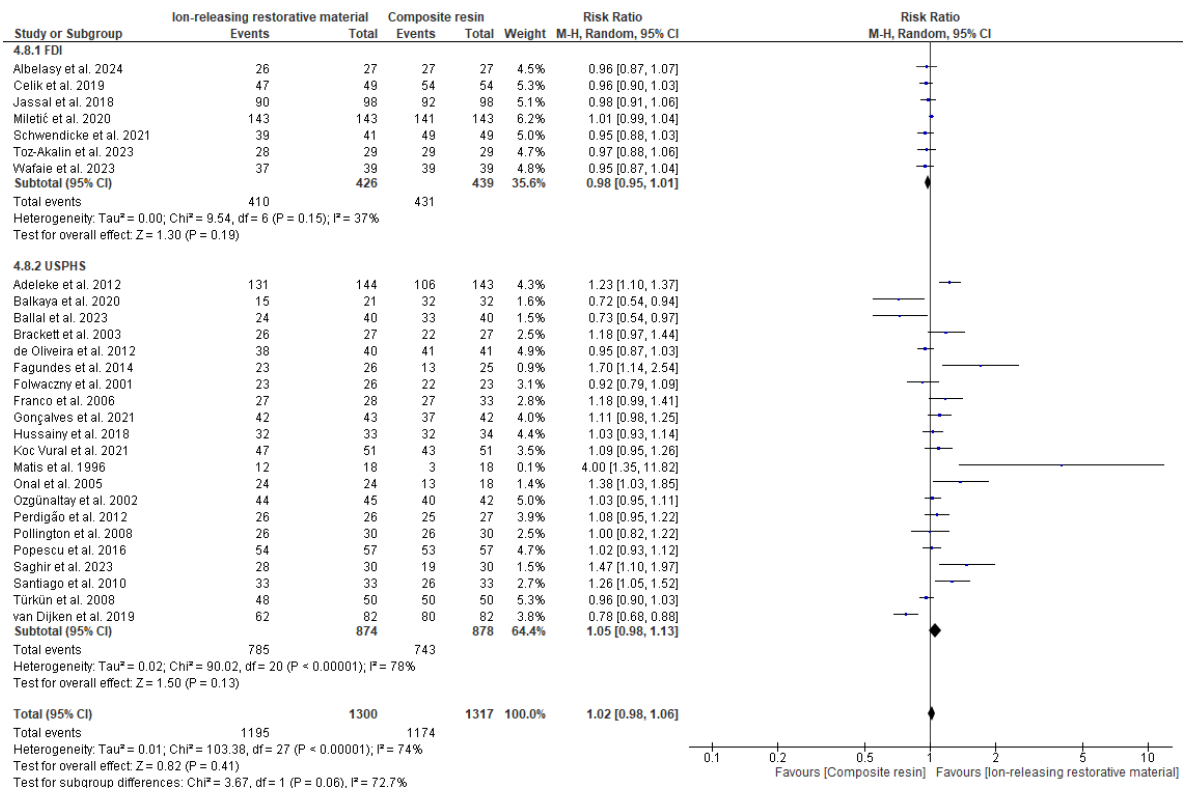


Figure S45. Absence of wear between IRR and CR in dental restorations by the evaluation criteria

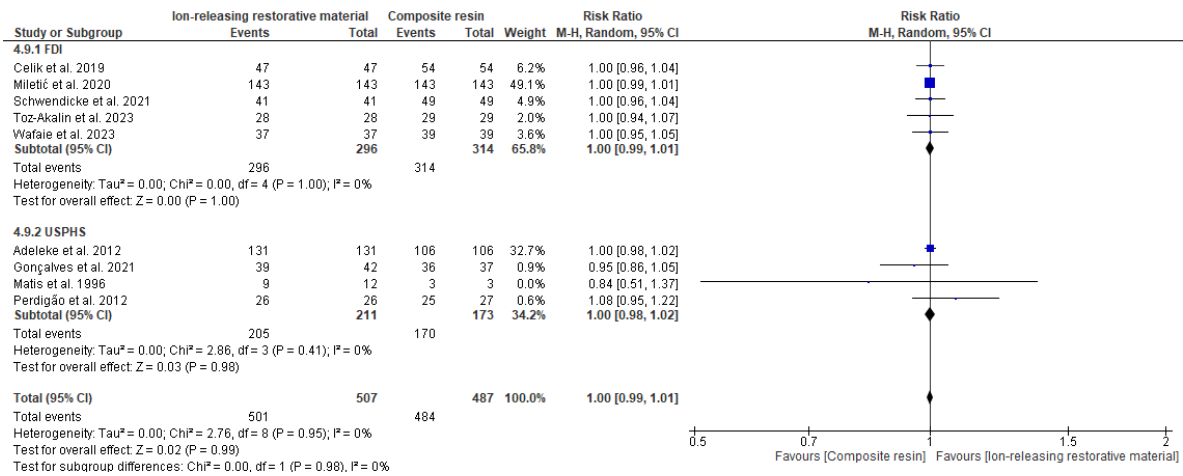


Figure S46. Proper anatomic form between IRR and CR in dental restorations by the evaluation criteria

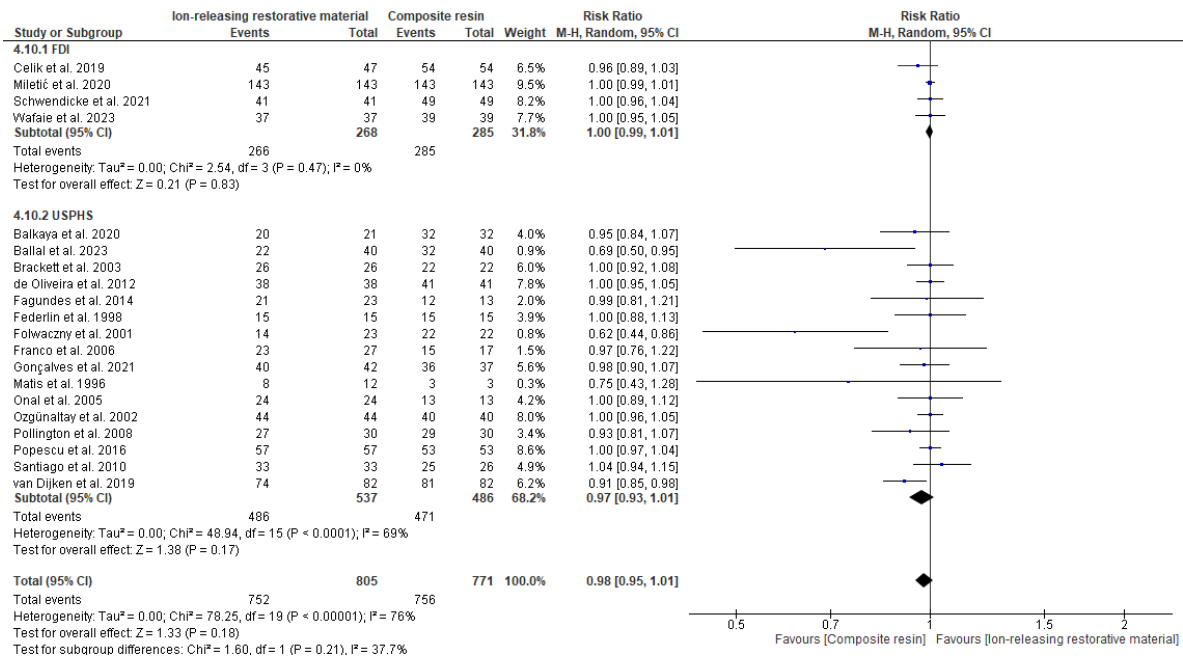


Figure S47. Absence of sensibility between IRR and CR in dental restorations by the evaluation criteria

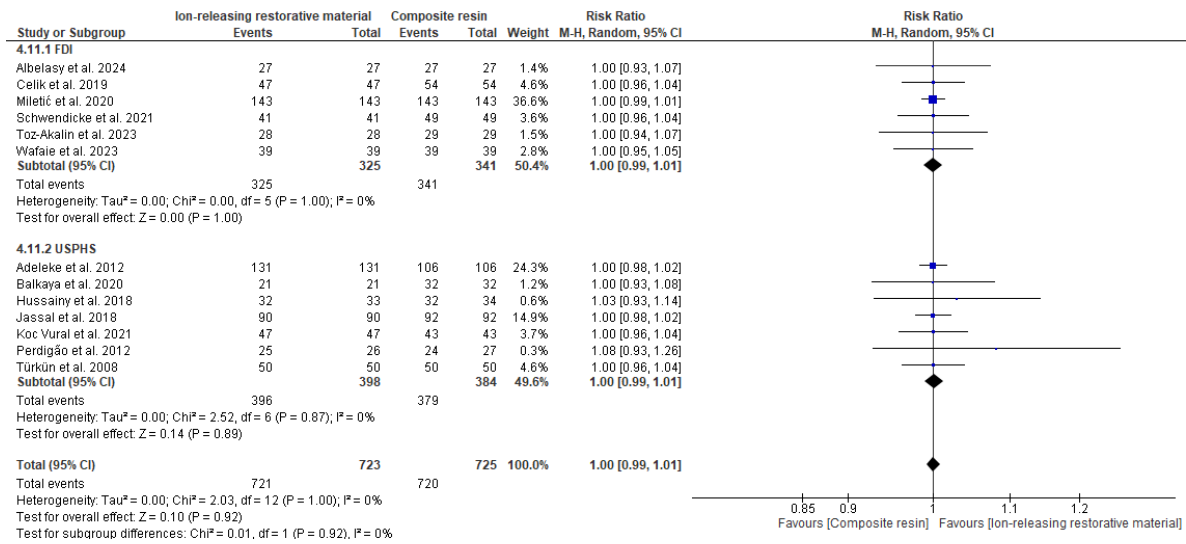


Figure S48. Adequate periodontal tissue between IRR and CR in dental restorations by the evaluation criteria

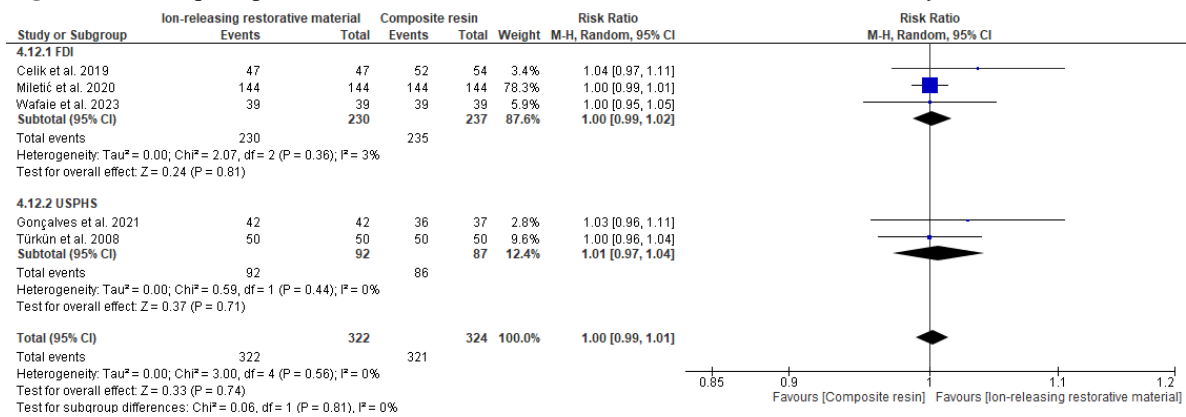


Figure S49. Absence of secondary caries or erosion or abfraction between IRR and CR in dental restorations

by follow-up time

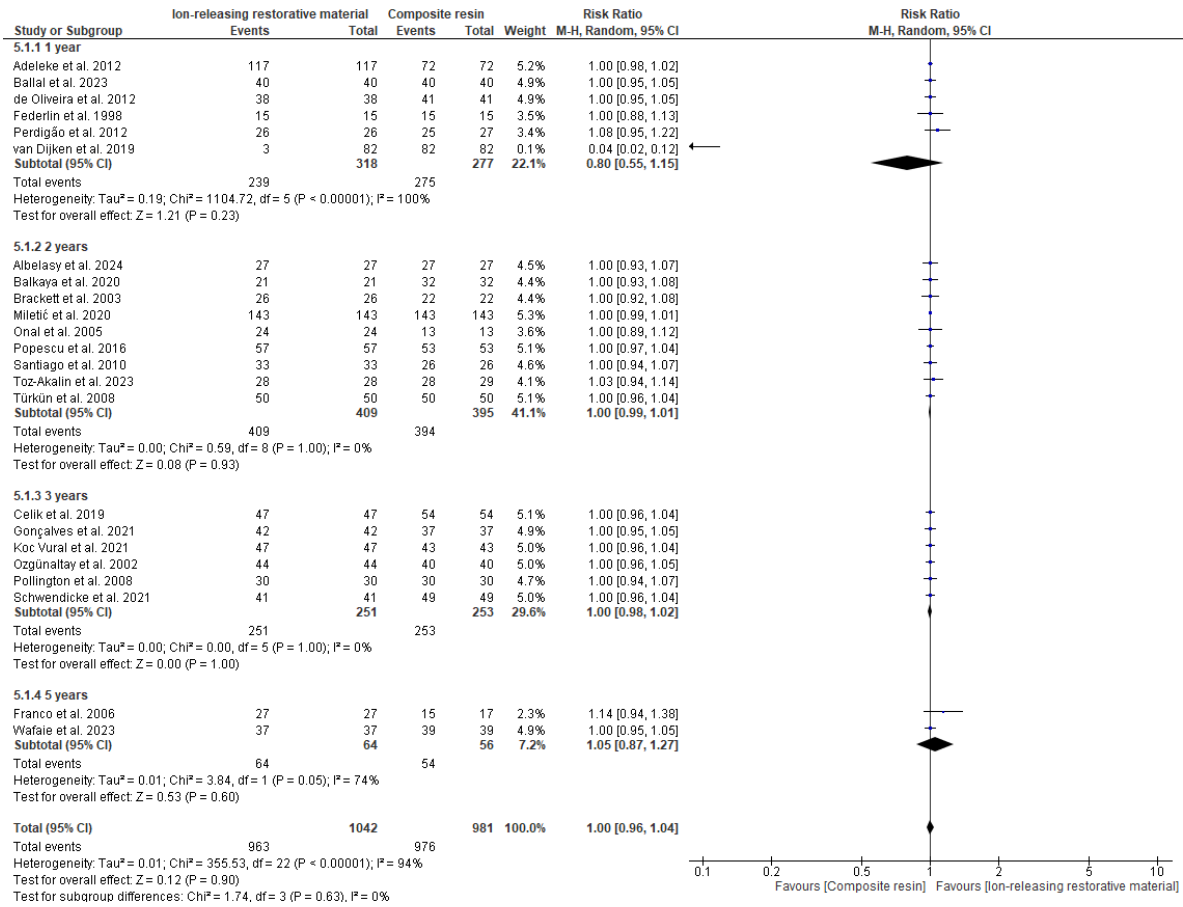


Figure S50. Absence of marginal discoloration between IRR and CR in dental restorations by follow-up time

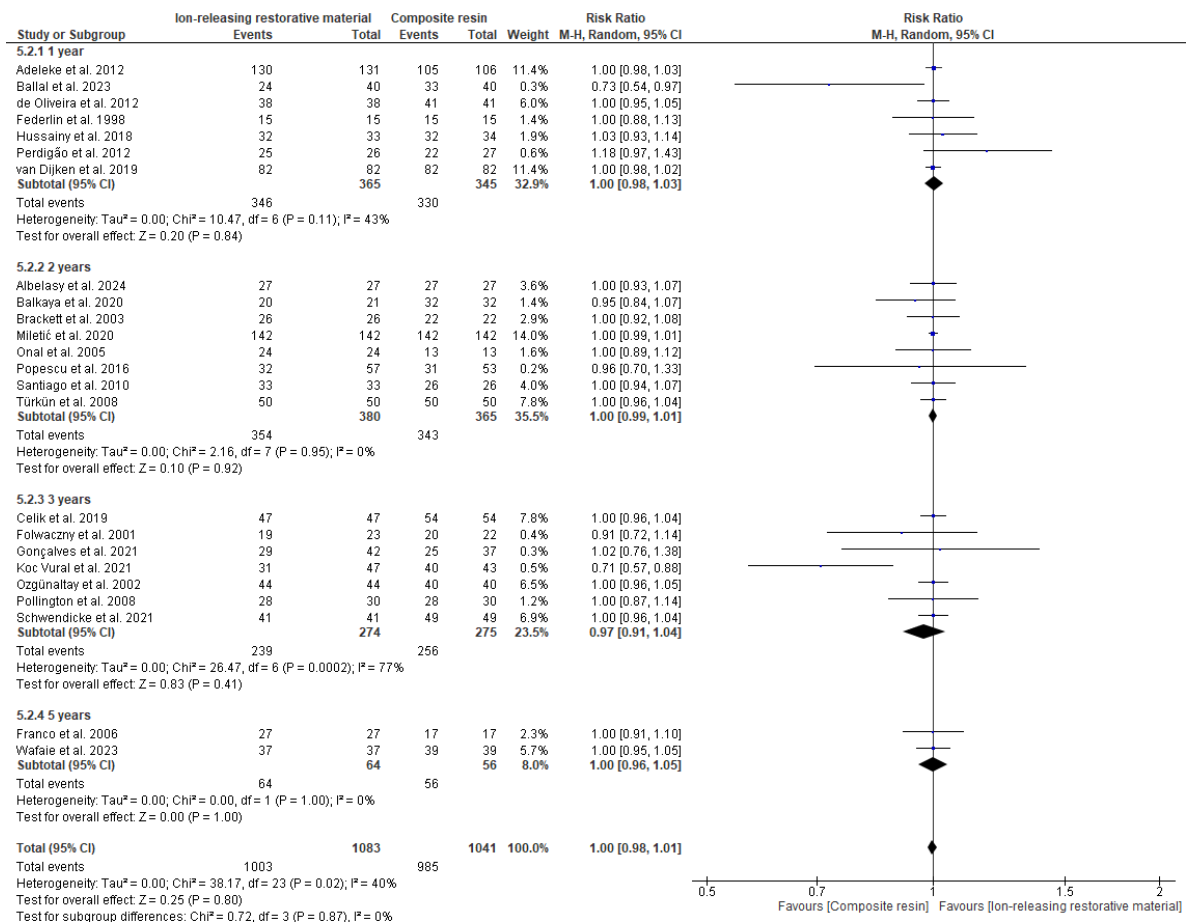


Figure S51. Adequate of marginal adaptation between IRR and CR in dental restorations by follow-up time

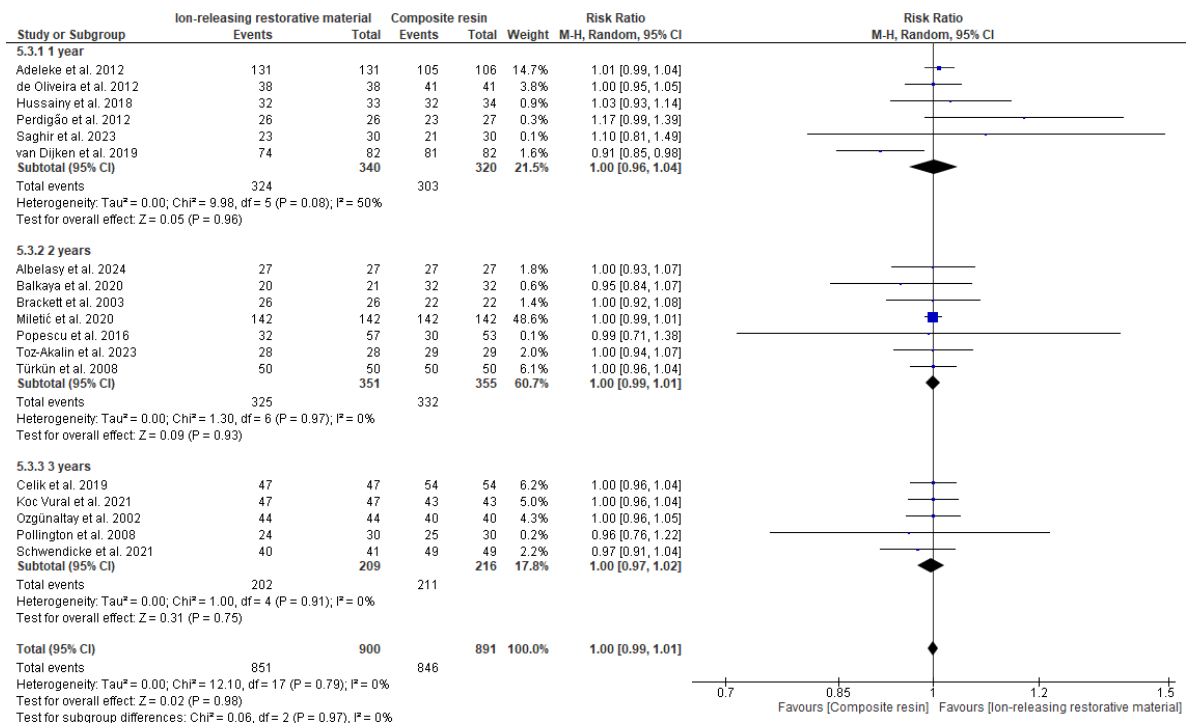


Figure S52. Adequate marginal or tooth integrity between IRR and CR in dental restorations by follow-up time

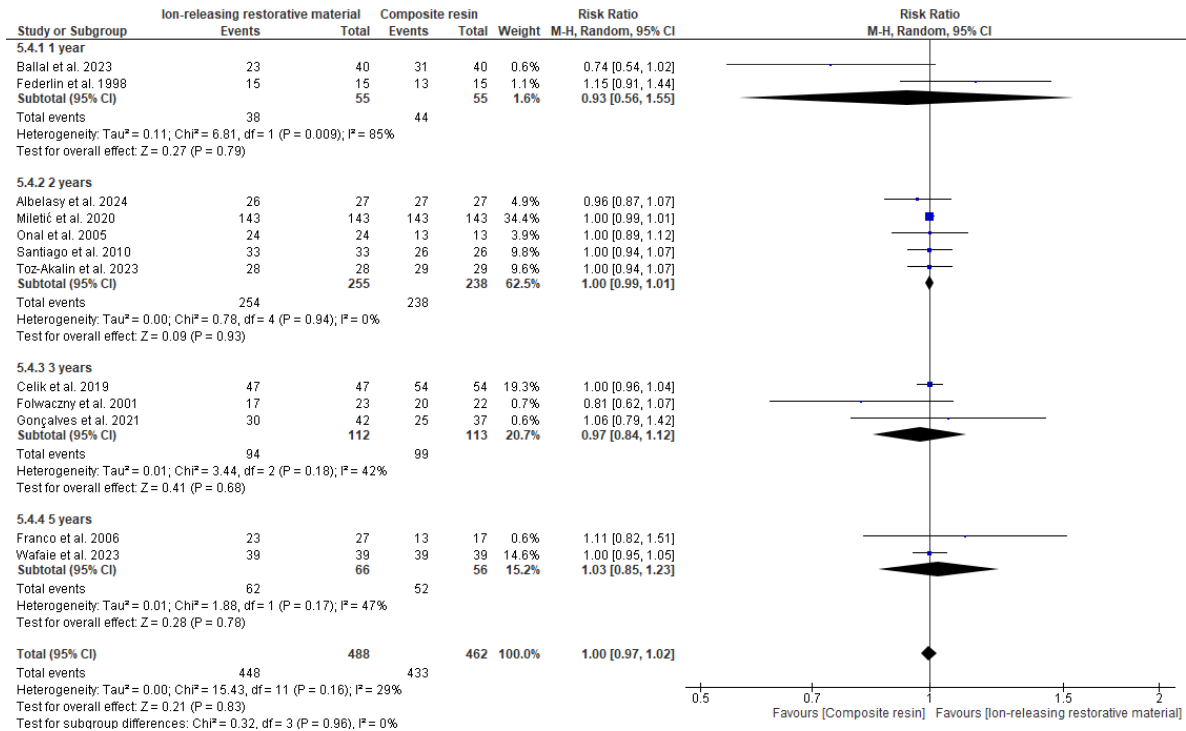


Figure S53. Adequate color or translucency between IRR and CR in dental restorations by follow-up time

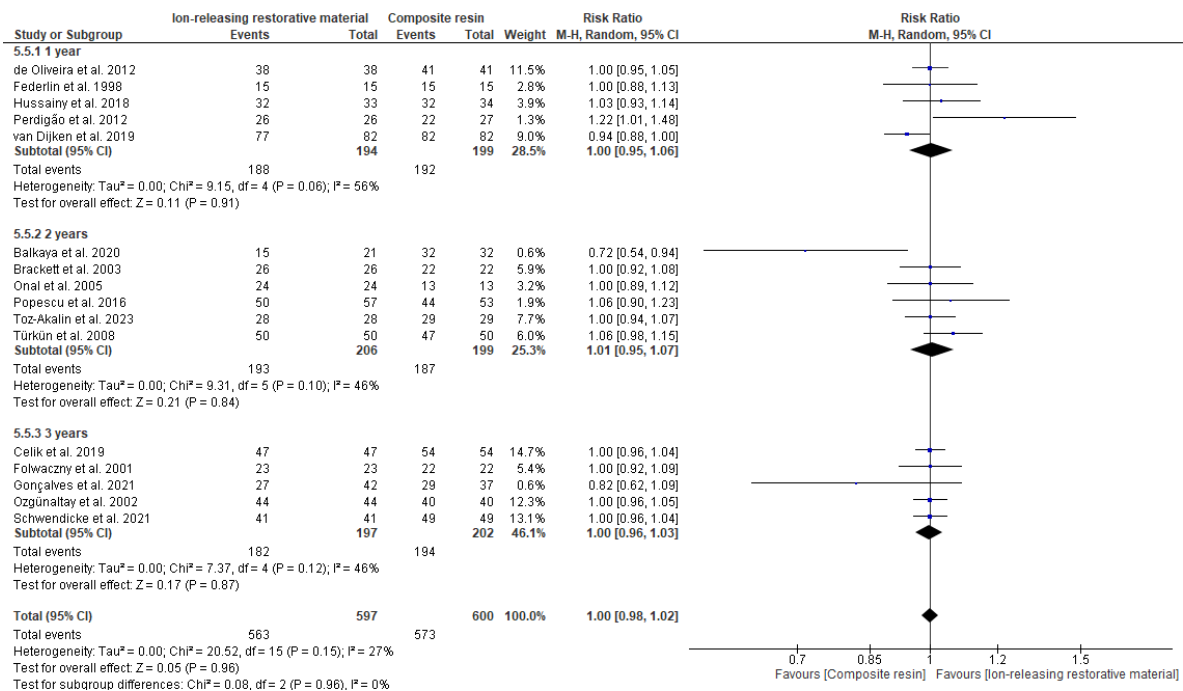


Figure S54. Proper surface texture or luster between IRR and CR in dental restorations by follow-up time

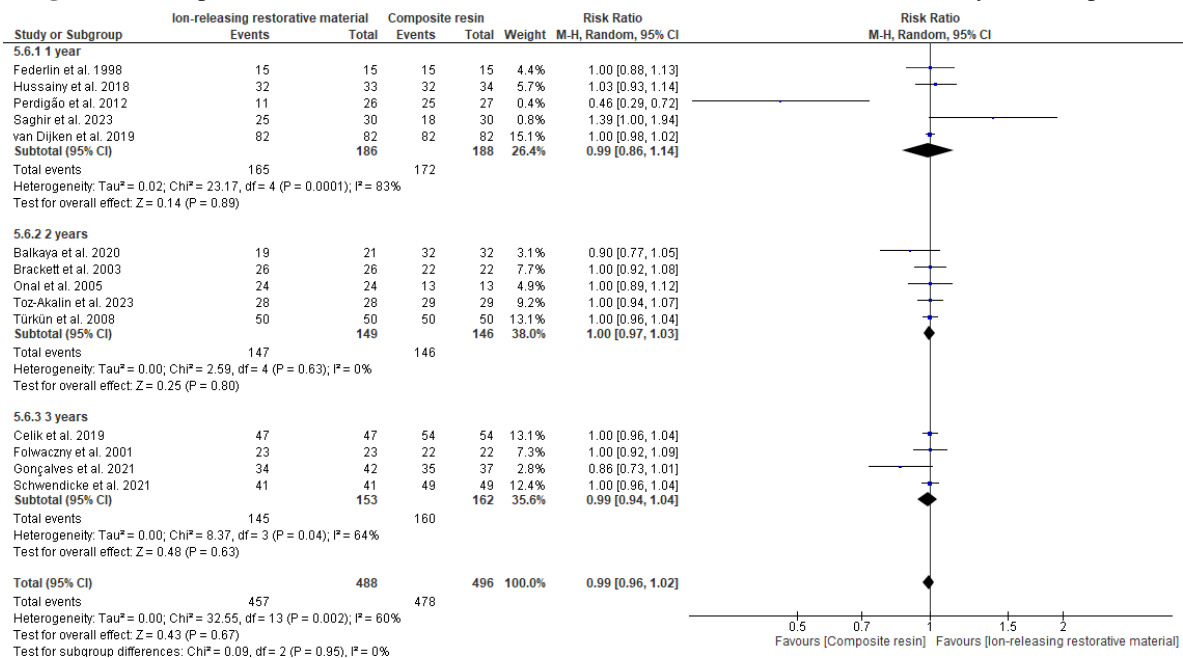


Figure S55. Proper surface staining between IRR and CR in dental restorations by follow-up time

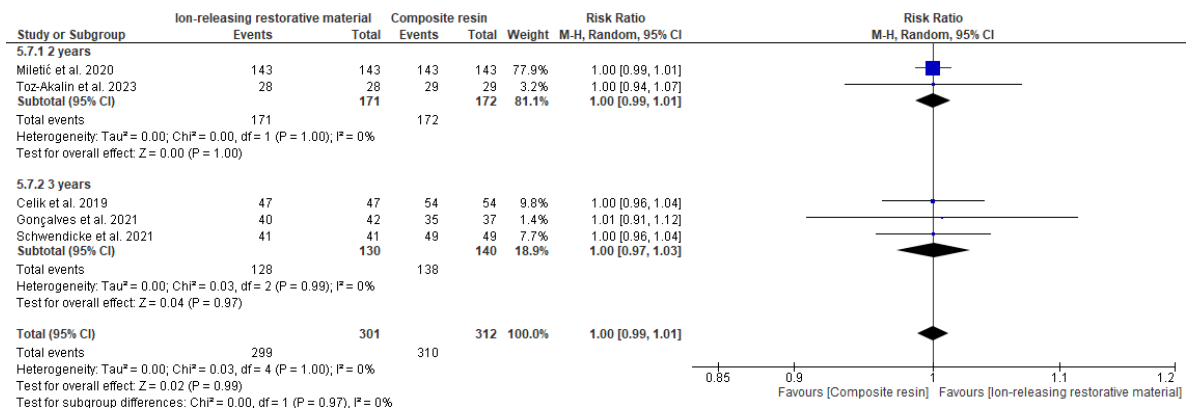


Figure S56. Retention between IRR and CR in dental restorations by follow-up time

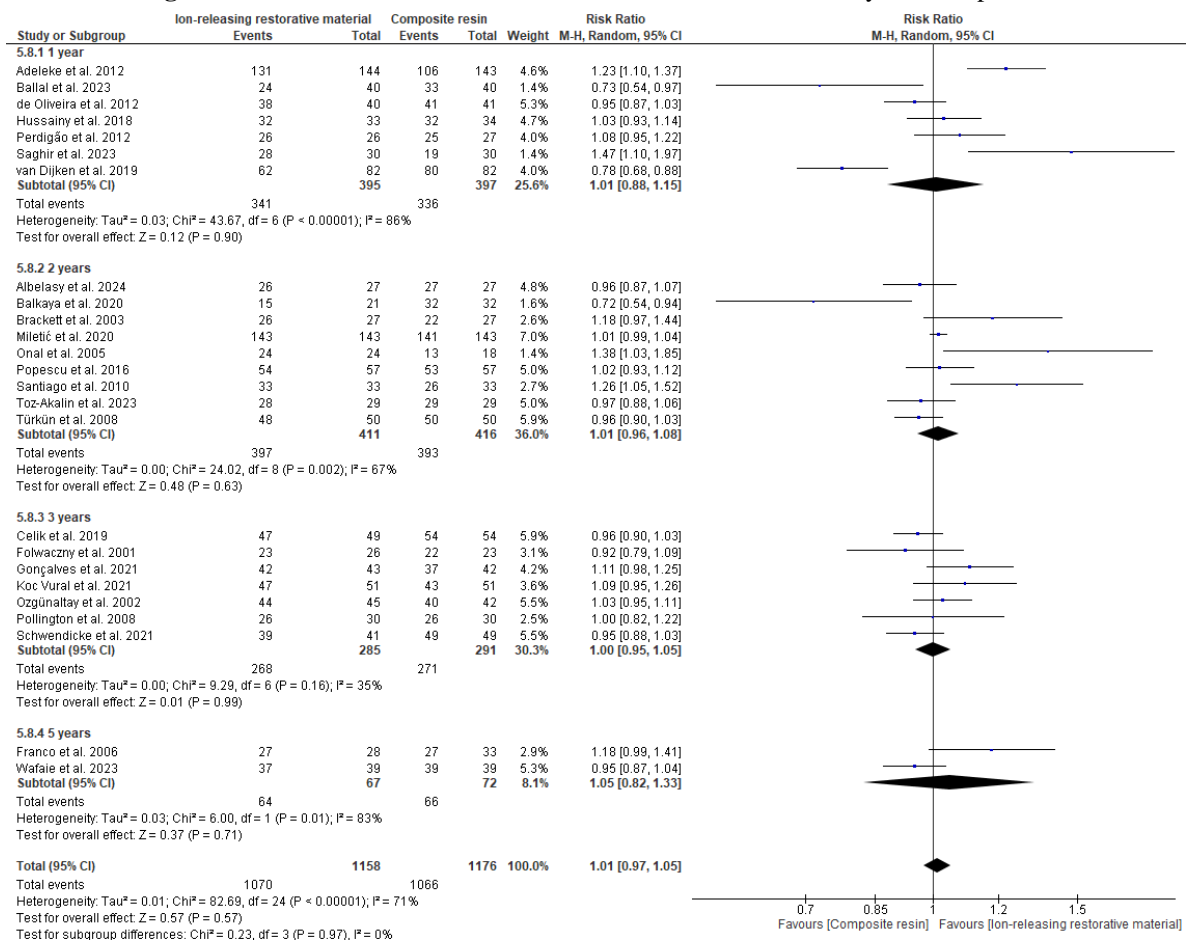


Figure S57. Absence of wear between IRR and CR in dental restorations by follow-up time

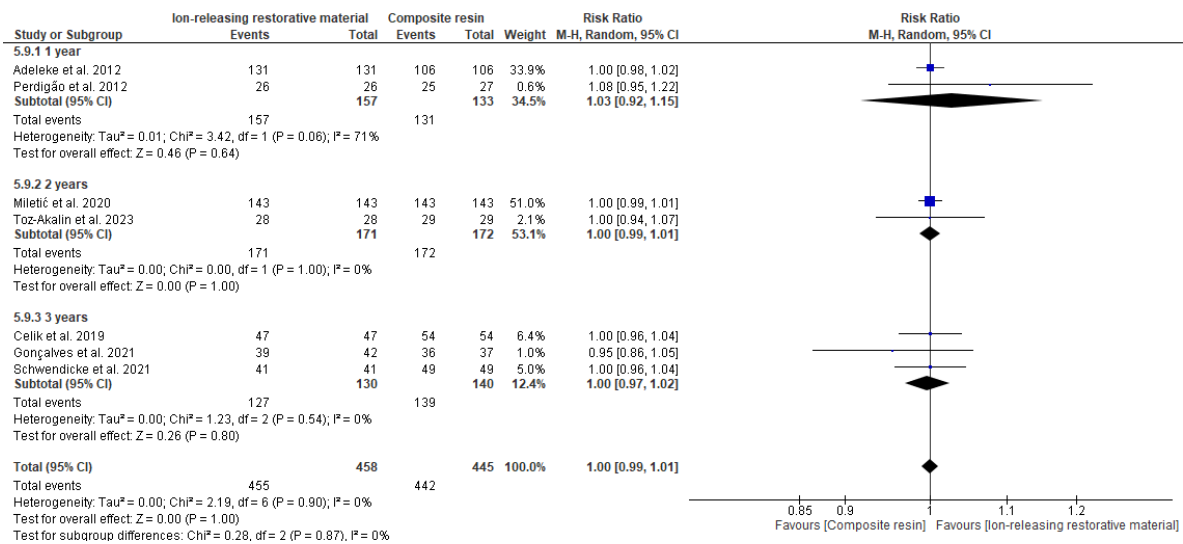


Figure S58. Proper anatomic form between IRR and CR in dental restorations by follow-up time

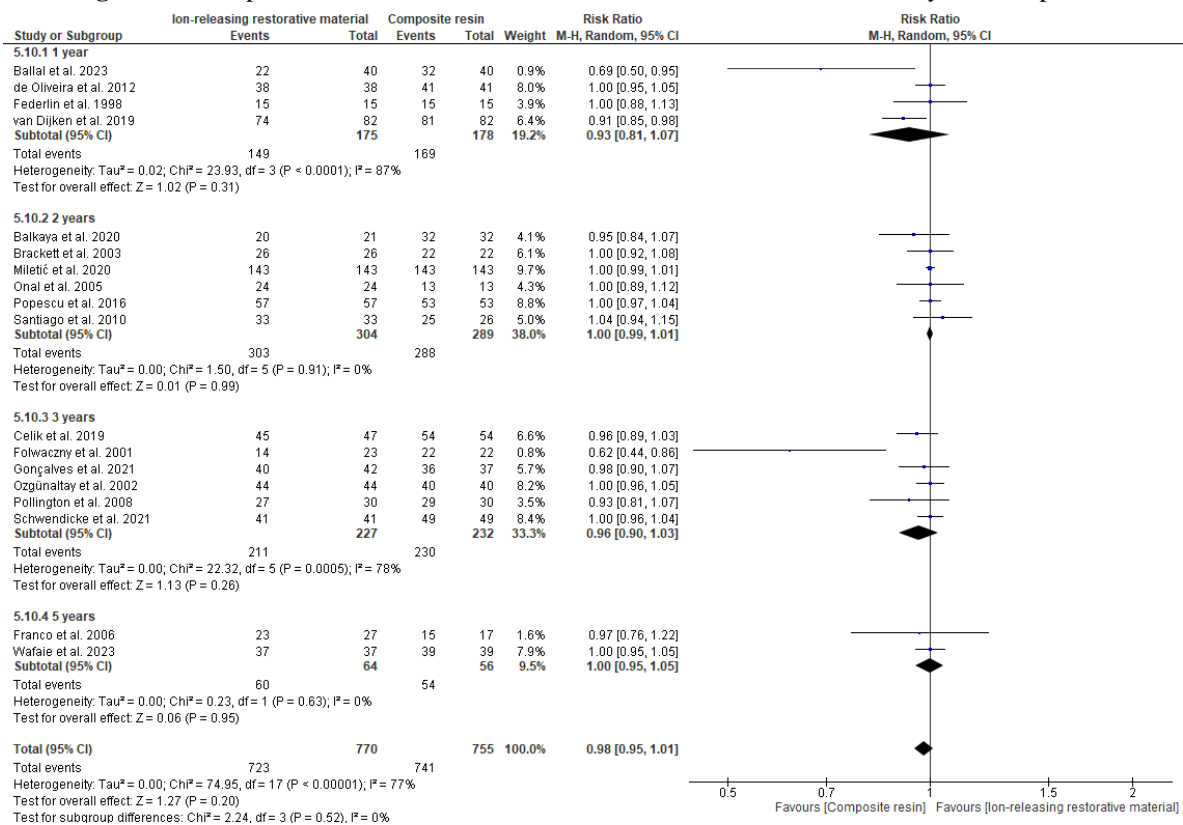


Figure S59. Absence of sensibility between IRR and CR in dental restorations by follow-up time

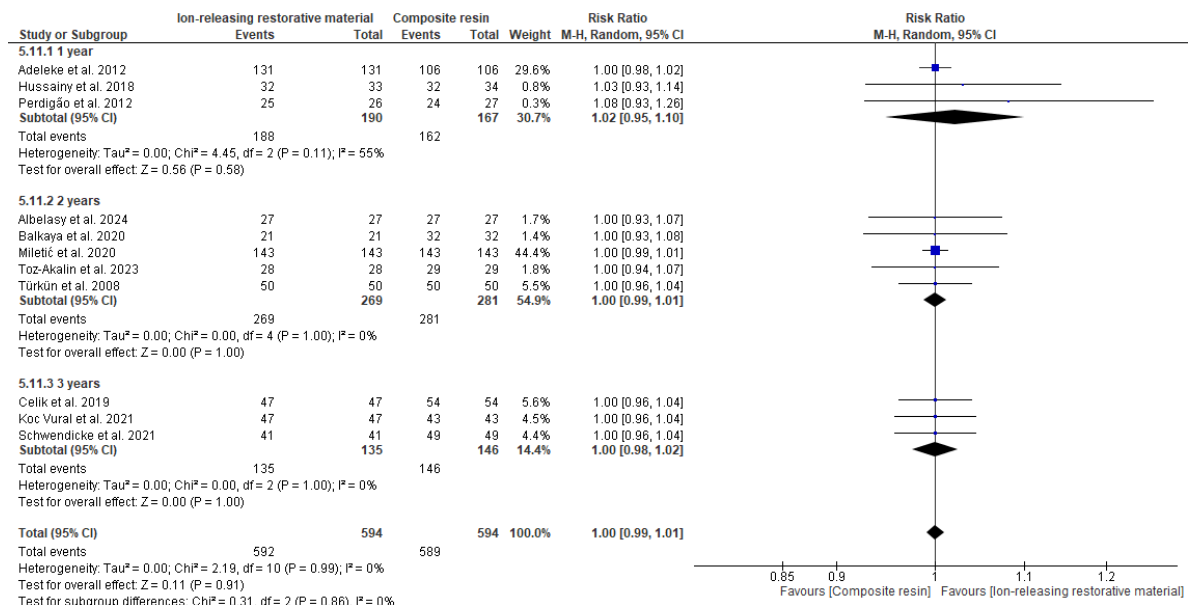


Figure S60. Adequate periodontal tissue between IRR and CR in dental restorations by follow-up time

