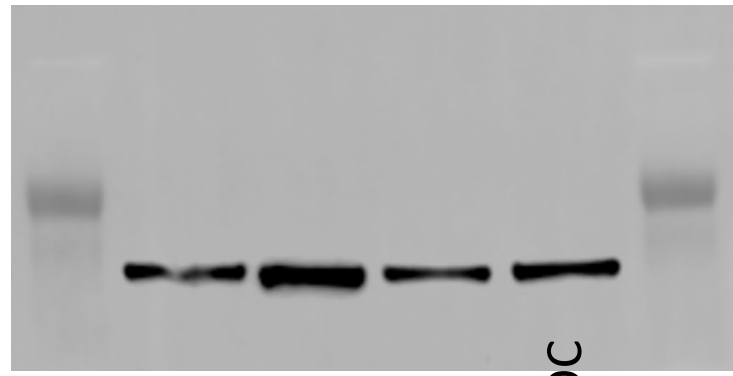


**TRAP**

**GAPDH**

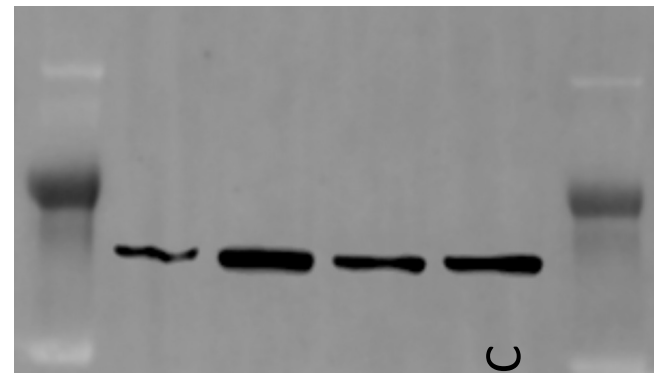


macrophage

Untreated OC

Cdt 50ng/ml OC

Cdt+LGM2605 100uM OC

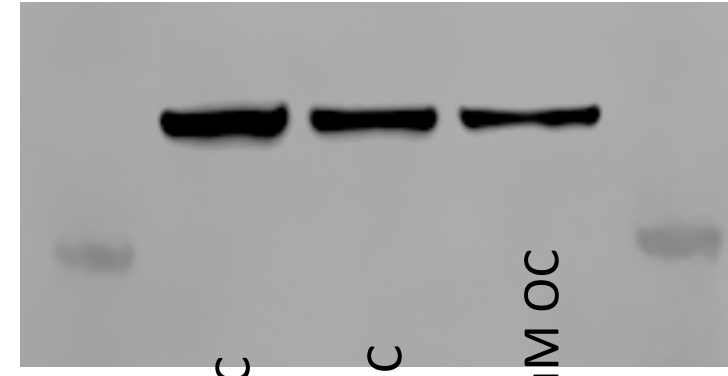


macrophage

Untreated OC

Cdt 50ng/ml OC

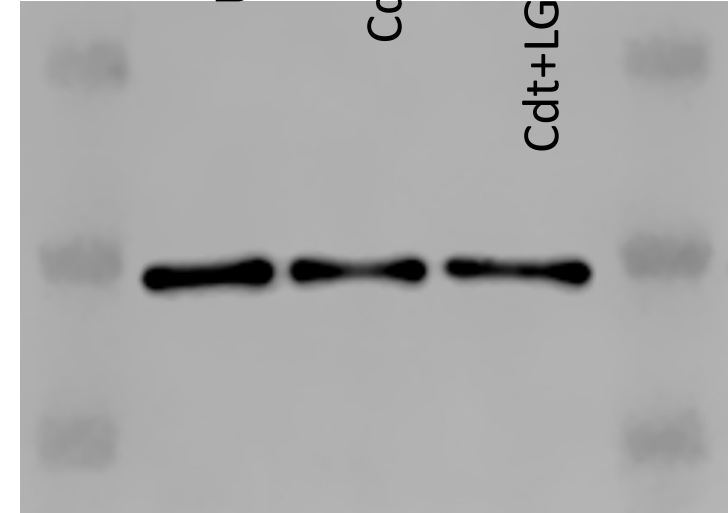
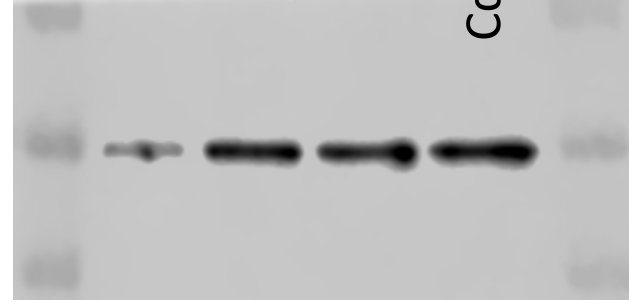
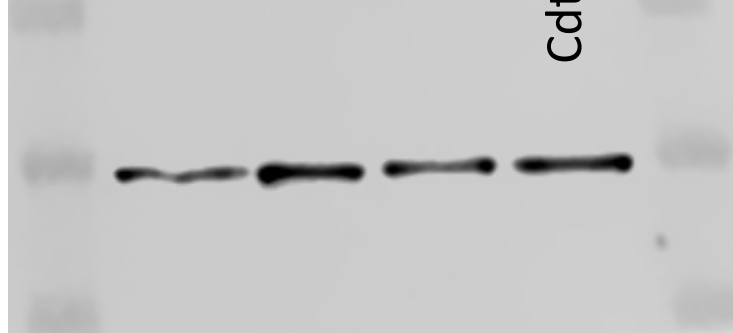
Cdt+LGM2605 100uM OC



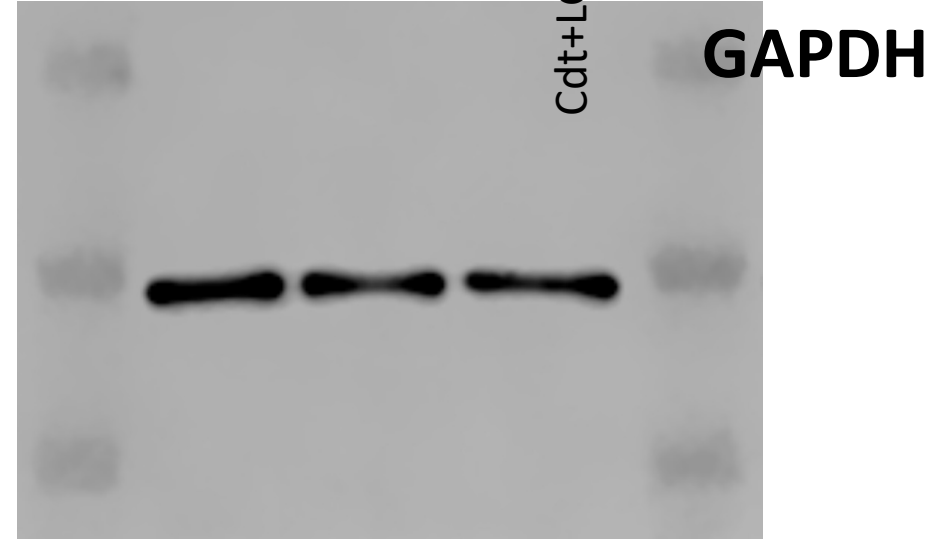
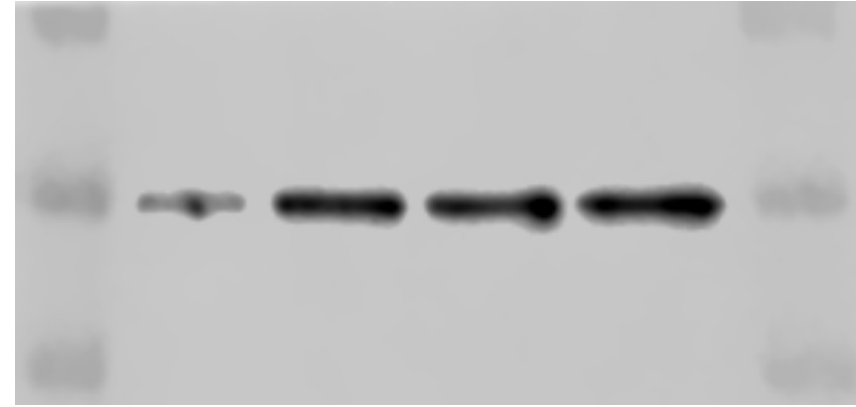
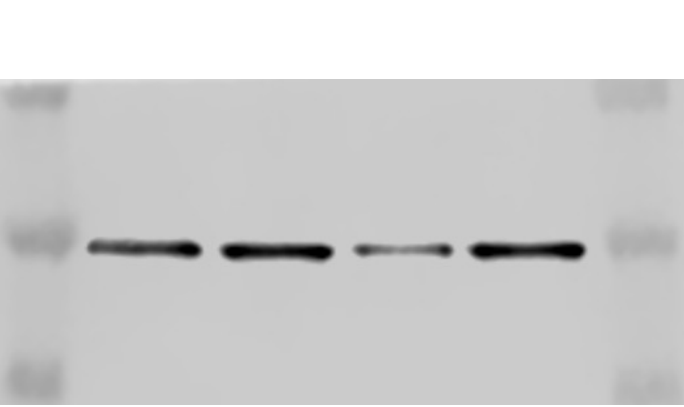
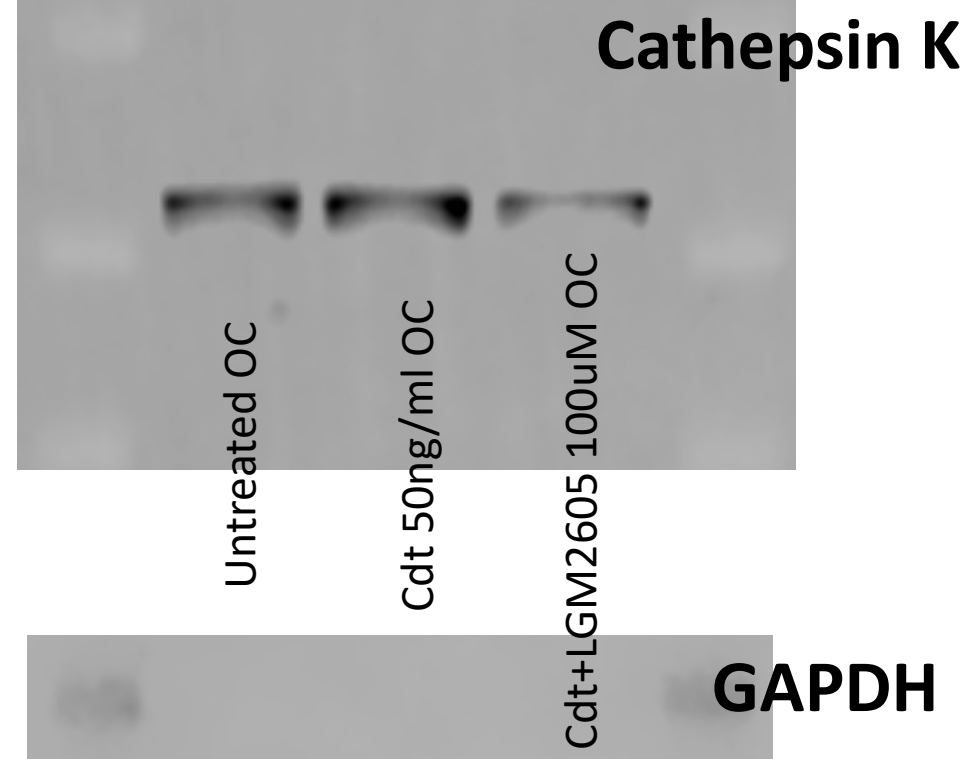
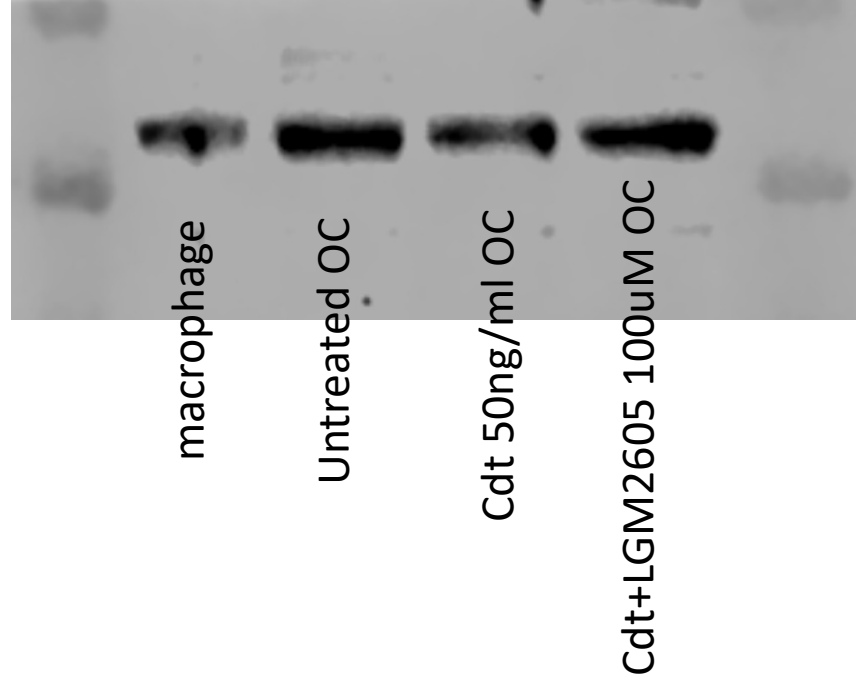
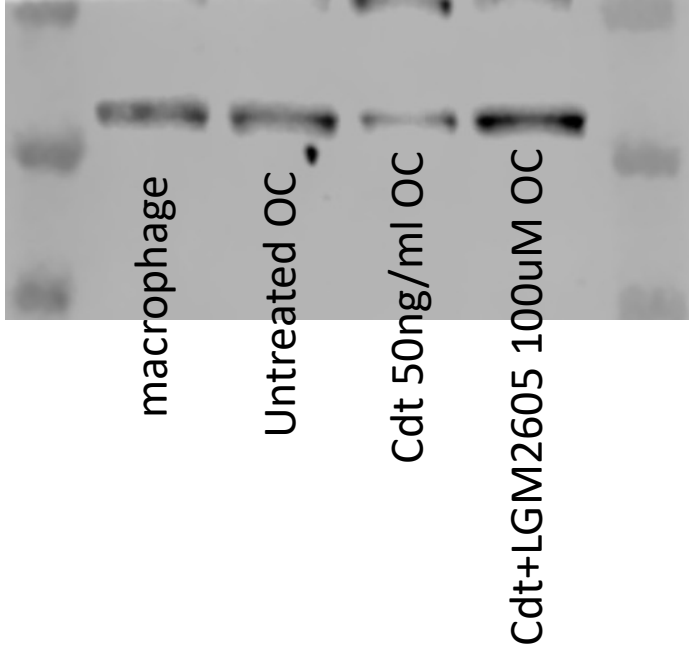
Untreated OC

Cdt 50ng/ml OC

Cdt+LGM2605 100uM OC



OC = Osteoclast



OC = Osteoclast