

Figure S1. Calibration curves of the standard phenolic compounds (catechin, epicatechin, quercetin and rutin) for HPLC quantitation.

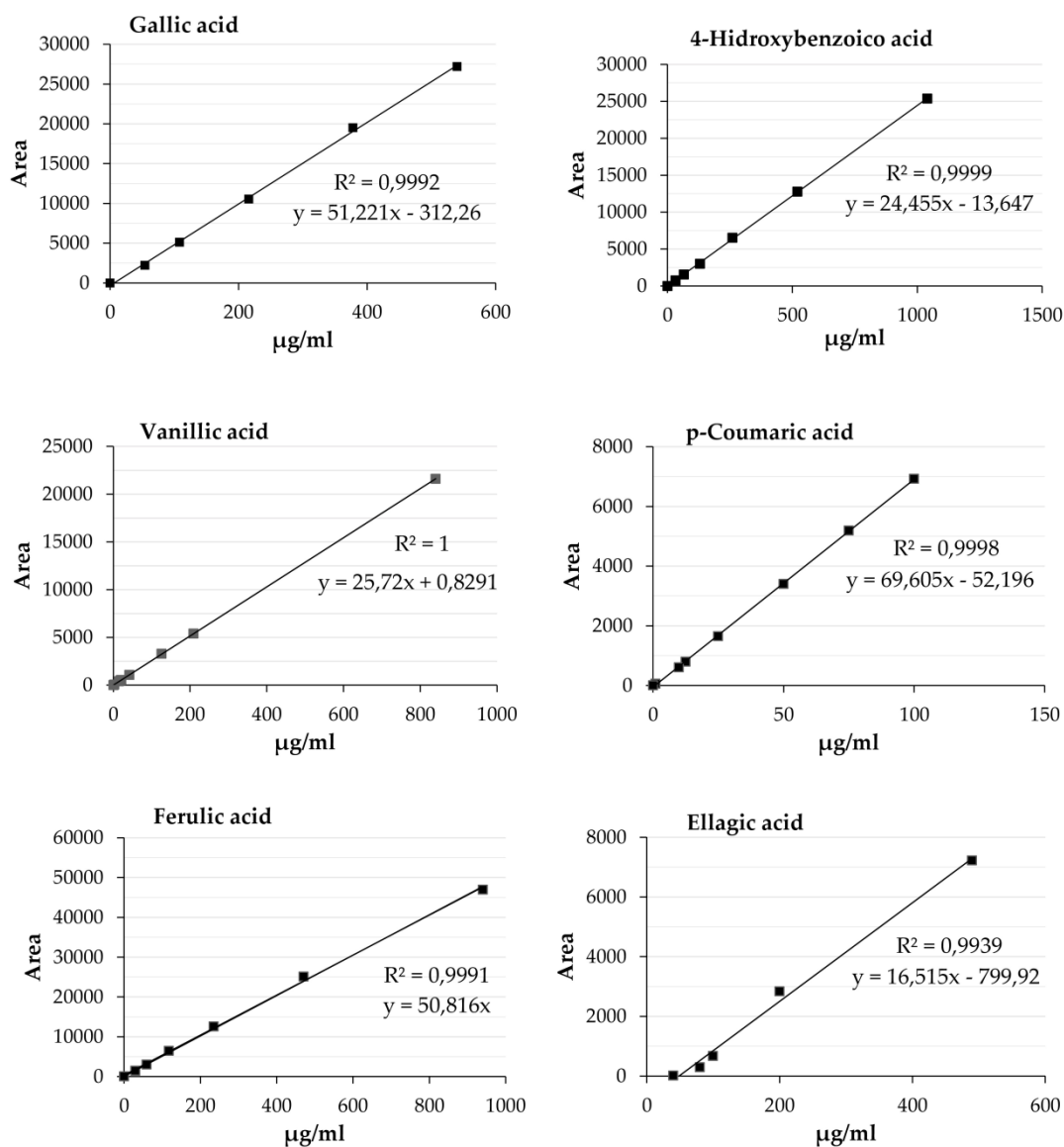


Figure S2. Calibration curves of the standard phenolic compounds (gallic acid, 4-hidroxy benzoic acid, vanillic acid, p-coumaric acid, ferulic acid and ellagic acid) for HPLC quantitation.