

Supplementary figures

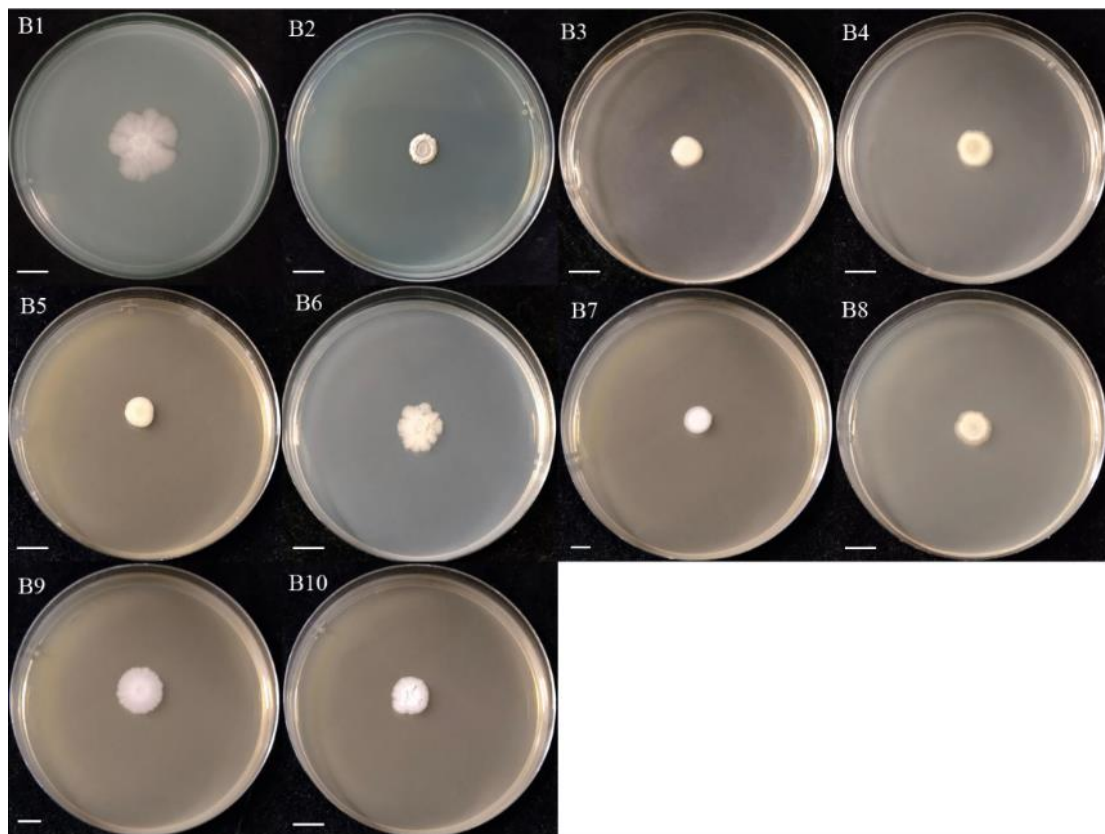


Figure S1: Morphology of colonies of bacterial isolates obtained from the *Camellia sinensis*. Colony pictures were taken at 4 days post-inoculation by applying 5 μ L of a bacterial suspension on the center of a LB plate (diameter 9 cm). Scale bars represent 10 mm.

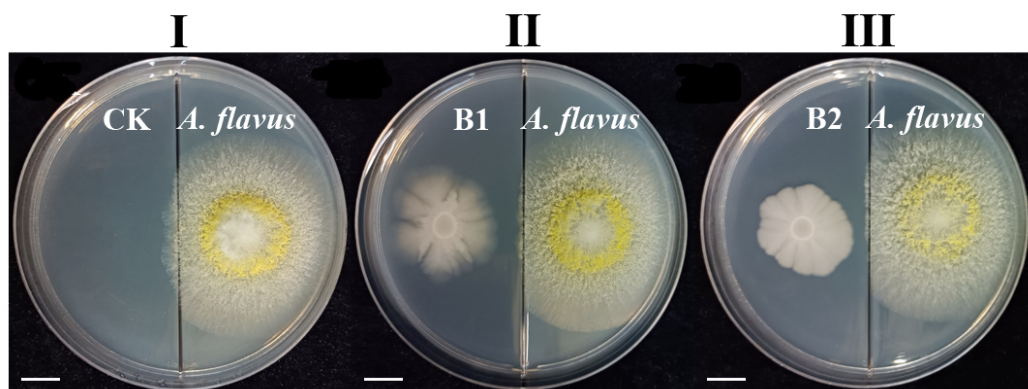


Figure S2: Inhibition effect of volatile compounds produced by B1 and B2 on the growth of *A. flavus*. Colony pictures were taken at 4 days post-inoculation by applying 5 μ L of bacterial and *A. flavus* conidial suspension on the two sides of a LB plate (plate separated by a baffle), respectively. Scale bars represent 10 mm.

Table S1 Relative inhibition rates of *A. flavus* inhibited by bacterial isolates B1~B10. Datas statistics were performed at 4 days post-inoculation. Values appended by asterisks are significantly different (Student's *t* test: $P < 0.05$). All assays were repeated three times with three replicates per repeat.

Strain	Relative inhibition rate (%)
B1	34.22±0.0482*
B2	35.72±0.0060*
B3	0
B4	0
B5	0
B6	0
B7	0
B8	0
B9	0
B10	0

Table S2 Expression profiling genes involved in aflatoxin biosynthesis in *A. flavus*.

Query Gene ID	Gene ID	Gene Description	Log2FC
Unigene2277	AFLA_033290	Regulator of secondary metabolism LaeA	-0.13
Unigene19513	AFLA_139370	<i>aflB</i> / <i>fas-1</i> /fatty acid synthase beta subunit	-0.51
Unigene19011	AFLA_139410	<i>aflC</i> / <i>pksA</i> / <i>pksL1</i> / polyketide synthase	-0.78
Unigene4845	AFLA_139390	<i>aflD</i> / <i>nor-1</i> / reductase	-4.12
Unigene11479	AFLA_139310	<i>aflE</i> / <i>norA</i> / <i>aad</i> / <i>adh-2</i> / NORreductase/dehydrogenase	0.46
Unigene7433	AFLA_139260	<i>aflG</i> / <i>avnA</i> / <i>ord-1</i> / cytochromeP450 monooxygenase	-0.03
Unigene21431	AFLA_139330	<i>aflH</i> / <i>adhA</i> / short chainalcohol dehydrogenase	0.57
Unigene780	AFLA_139320	<i>aflI</i> / <i>estA</i> / esterase	-2.13
Unigene13467	AFLA_139190	<i>aflK</i> / <i>vbs</i> / VERB synthase	-1.10
Unigene15485	AFLA_139300	<i>aflM</i> / <i>ver-1</i> / dehydrogenase/ketoreductase	-0.22
Unigene3205	AFLA_139280	<i>aflN</i> / <i>verA</i> / monooxygenase	0.26
Unigene4604	AFLA_139220	<i>aflO</i> / <i>omtB</i> / <i>dmtA</i> / O-methyltransferase B	-0.19
Unigene11091	AFLA_139210	<i>aflP</i> / <i>omtA</i> / <i>omt-1</i> /O-methyltransferase A	-0.79
Unigene19606	AFLA_139200	<i>aflQ</i> / <i>ordA</i> / <i>ord-1</i> / oxidoreductase / cytochromeP450 monooxygenase	-0.38
Unigene14983	AFLA_139360	<i>aflR</i> / <i>apa-2</i> / <i>afl-2</i> / transcription activator	-0.32
Unigene16697	AFLA_139420	<i>aflT</i> / transmembrane protein	-0.60