

Table S1. Standard for evaluation of pathology of colon.

Score	Colonic epithelium	Inflammatory reaction
0	Normal morphology	No inflammatory infiltration
1	Goblet cell injury	Inflammatory cell infiltration, infiltration around the recess
2	Large area injury of goblet cells and enlargement of intestinal epithelial cell gap	Inflammation invades mucosal muscular layer
3	Loss of crypt glands, damage to some villi and enlargement of intestinal epithelial cells	Invade the mucosal muscle layer more widely, mucosal edema appears
4	Large area loss of crypt glands, ulceration, massive destruction of villi	Invading submucosa

Table S2. Reaction system of reverse transcription.

Reagent	Dosage
dNTP Mix	4.0 μ L
Primer Mix	2.0 μ L
5 \times RT Buffer	4.0 μ L
DTT	2.0 μ L
HiFiScript	1.0 μ L
RNA Template	1.0 μ L
RNase-Free Water	6.0 μ L

Table S3. Primer sequences.

Gene	Upper primer	Lower primer
IL-1 β	CTGTGTCTTTCCCGTGGACC	CAGCTCA TATGGGTCCGACA
IL-6	AGAGGAGACTTCACAGAGGAT ACC	AATCAGAATTGCCATTGCACAAC
TNF- α	GACGTGGAAGTGGCAGAAGAG	TCTGGAAGCCCCCATCT
Muc2	ACCACCATTACCACCACCTCAG	CGATCACCACCATTGCCACTG
ZO-1	CCATCTTTGGACCGATTGCTG	TAATGCCCCGAGCTCCGATG
Claudin-1	GGATGTCCTGCGTTTC	CACAGCCAAGACCCTC
Occludin	TTGGGAGCCTTGACATCTTGTTT	GCCATACATGTCATTGCTTGGTG
GPR41	AATCACAGAAACGGGGAAGCC	GTCTGGGGTCATTCTAATTGG
GPR43	GCTGGTGATGCTGGAAAGAAG	GGCATAACAGTGGAGACAAGAC
GADPH	TCCTGCACCACCAACTGCTTAG	CTTACTCCTTGGAGGCCATGT

Table S4. Reaction system of RT-qPCR.

Reagent	Dosage
cDNA Template	1.0 μ L
Forward primer (10 μ M)	1.0 μ L
Reverse primer (10 μ M)	1.0 μ L
2 \times qPCR SuperMix	10.0 μ L
ddH ₂ O	7.0 μ L
Total	20.0 μ L

Table S5.Food intake and body weight correlation analysis.

		Body weight (g)
Food intake (g/mouse/day)	R	-0.927**
	P	0.00

Note: ** $p < 0.01$ indicates that there is a correlation between them.

Table S6. Effect of kombucha on the α diversity of gut microbiota in mice.

Group	Shannon	Simpson	Chao	ACE
NC	6.78 \pm 0.15	0.96 \pm 0.21	2558.77 \pm 140.11	2512.05 \pm 95.75
DC	6.48 \pm 0.11*	0.91 \pm 0.01*	2344.76 \pm 68.71*	2437.92 \pm 101.75*
MET	6.86 \pm 0.12#	0.98 \pm 0.01#	2687.67 \pm 57.75##	2766.77 \pm 88.25##
KT	6.87 \pm 0.23#	0.99 \pm 0.01#	2442.22 \pm 78.72#	2477.61 \pm 71.11#
TS	6.59 \pm 0.30	0.95 \pm 0.02	2402.75 \pm 61.15#	2462.30 \pm 63.15

Note: * $p < 0.05$, ** $p < 0.01$ vs. Normal; # $p < 0.05$, ## $p < 0.01$ vs. Model.

Table S7.LPS and IL-6 and TFN- α correlation analysis.

		TFN- α (pg/mL)	IL-6 (pg/mL)
LPS (EU/L)	R	0.974**	0.973**
	P	0.00	0.00

Note: ** $p < 0.01$ indicates that there is a correlation between them.

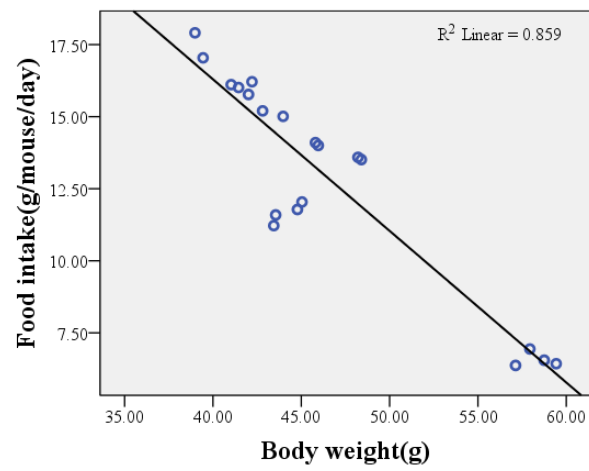


Figure S1.Correlation analysis of body weight and food intake.

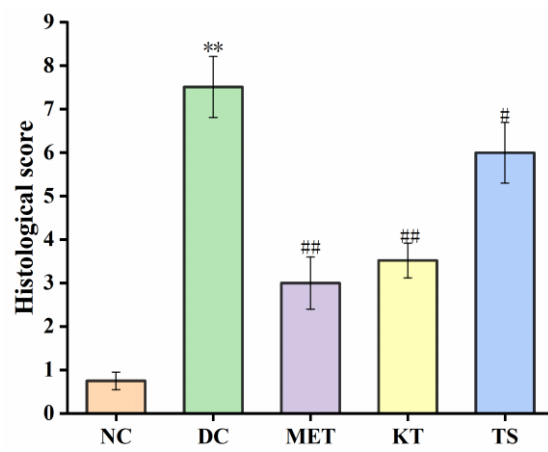


Figure S2.Colon histological score.