

Figure S1. Chromatogram of tocopherol standards ( $\alpha$ -,  $\beta$ -,  $\gamma$ -,  $\delta$ -tocopherol, respectively)

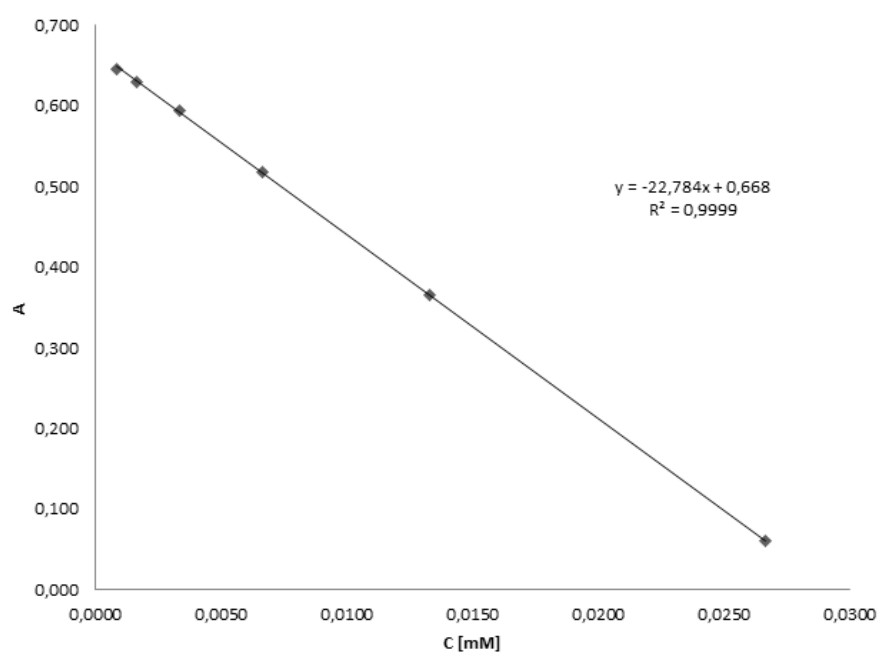


Figure S2. Calibration curve and the equation for DDPH assay

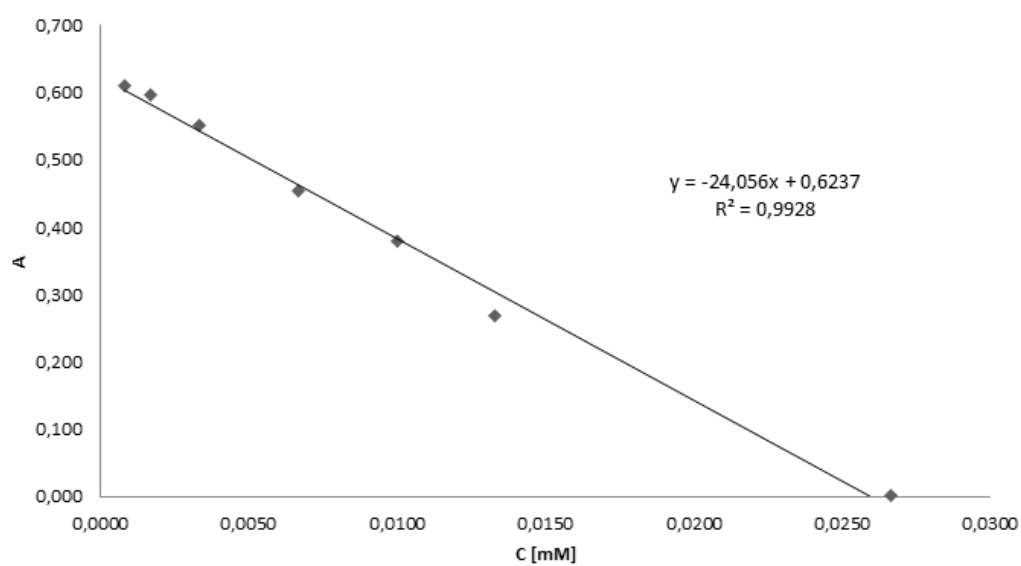


Figure S3. Calibration curve and the equation for ABTS assay

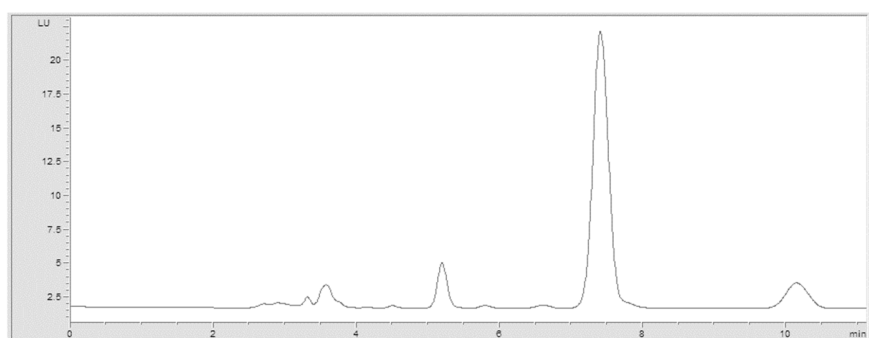


Figure S4. Chromatogram for tocopherol analysis of SFE-1 experiment (350 bar, 70 °C, 0.3 kg CO<sub>2</sub>/h)