

S.1. NMR Spectra of 1-BB, 4-BB and 6P-BCP fractions

S.1.1. NMR Spectra of 1-BB

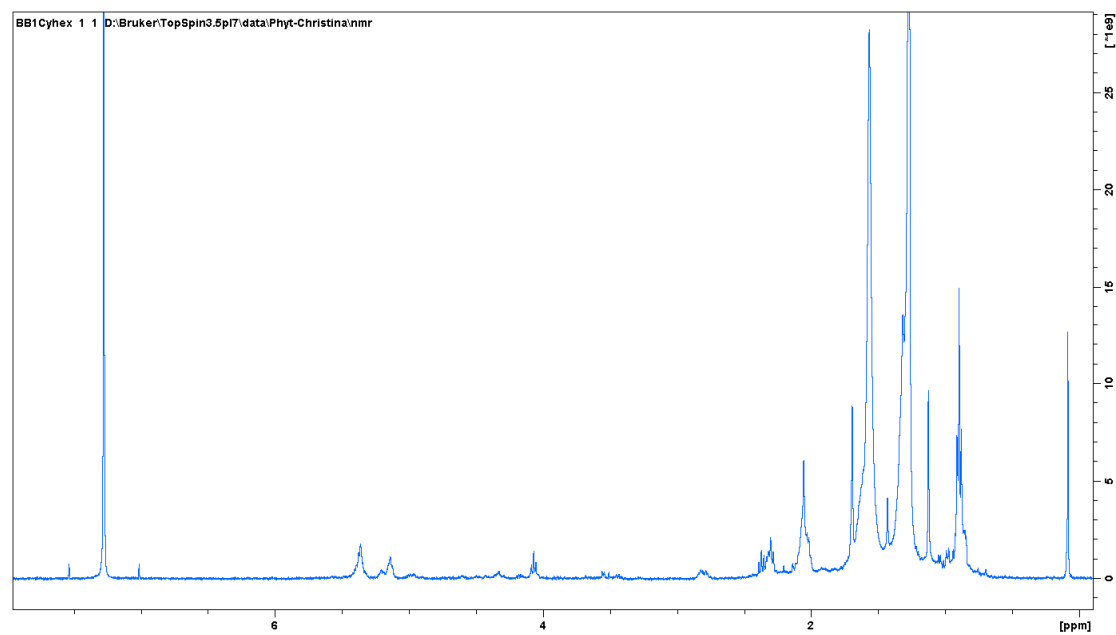


Figure S1. ¹H NMR (400 MHz, CDCl₃) spectrum of 1-BB-Et.

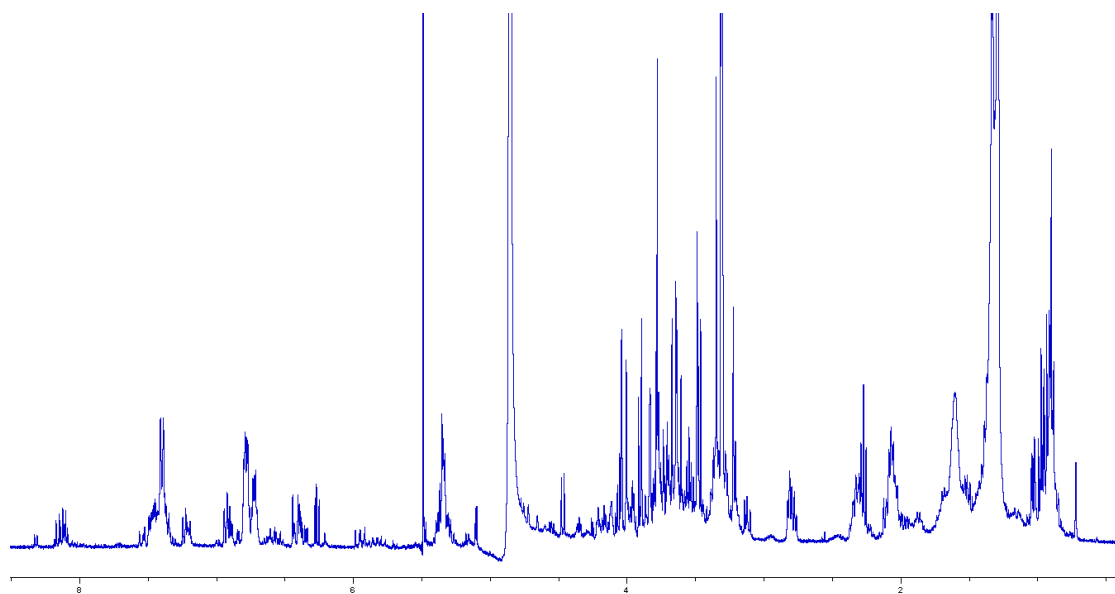


Figure S2. ¹H NMR (400 MHz, MeOD) spectrum of 1-BB-Bu.

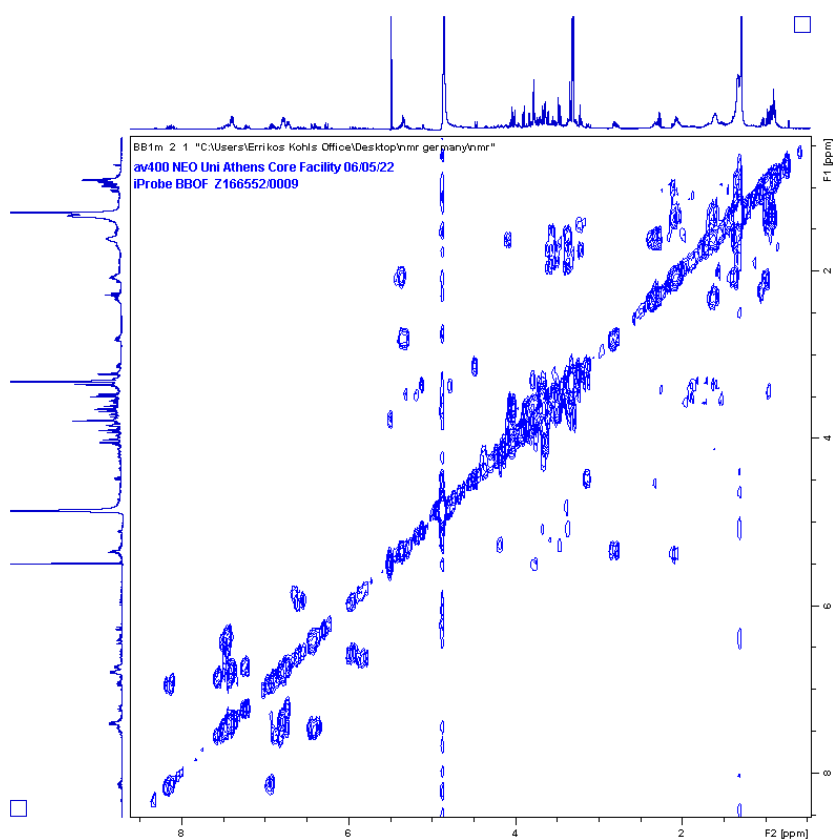


Figure S3. ^1H - ^1H COSY (400 MHz, MeOD) spectrum of 1-BB-Bu.

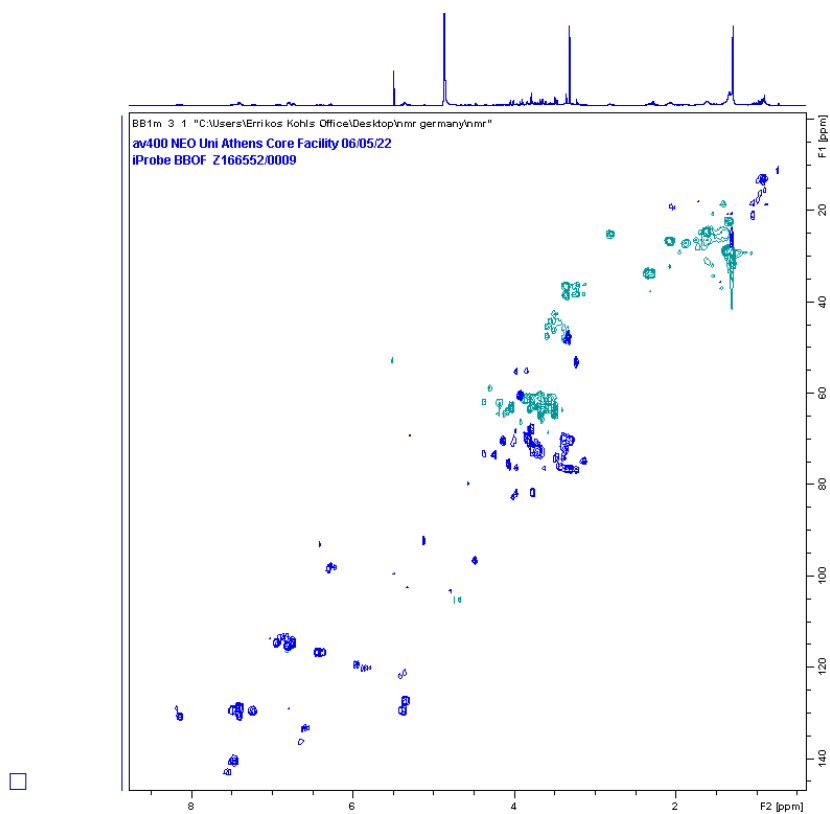


Figure S4. HSQC NMR (400 MHz, MeOD) spectrum 1-BB-Bu.

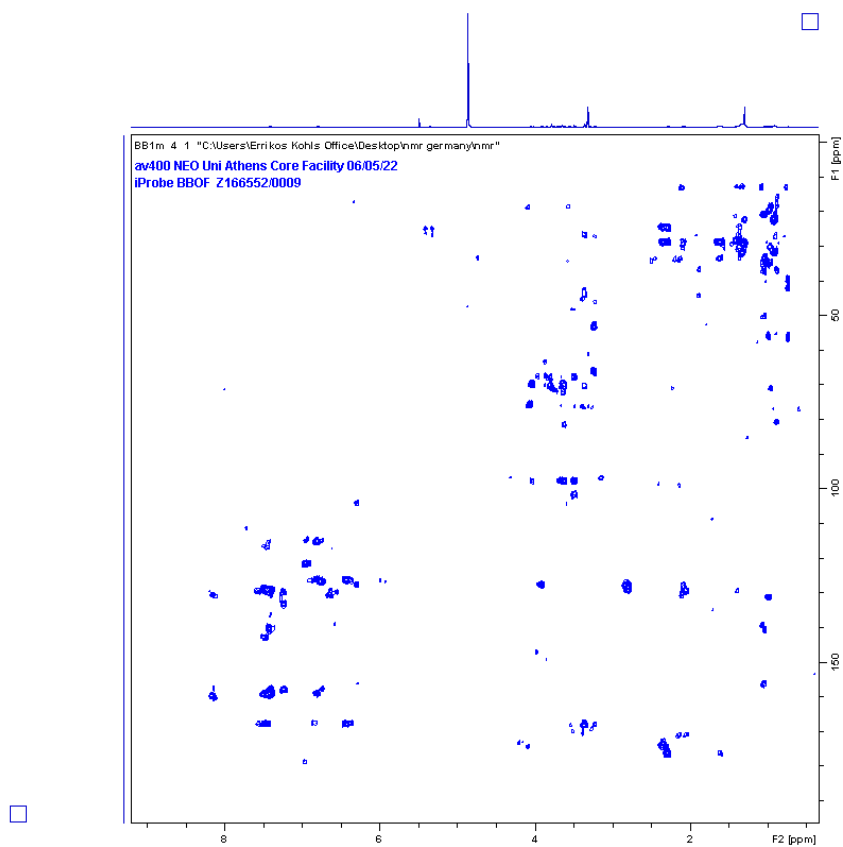


Figure S5. HMBC NMR (400 MHz, MeOD) spectrum 1-BB-Bu.

S.1.2. NMR spectra of 4-BB

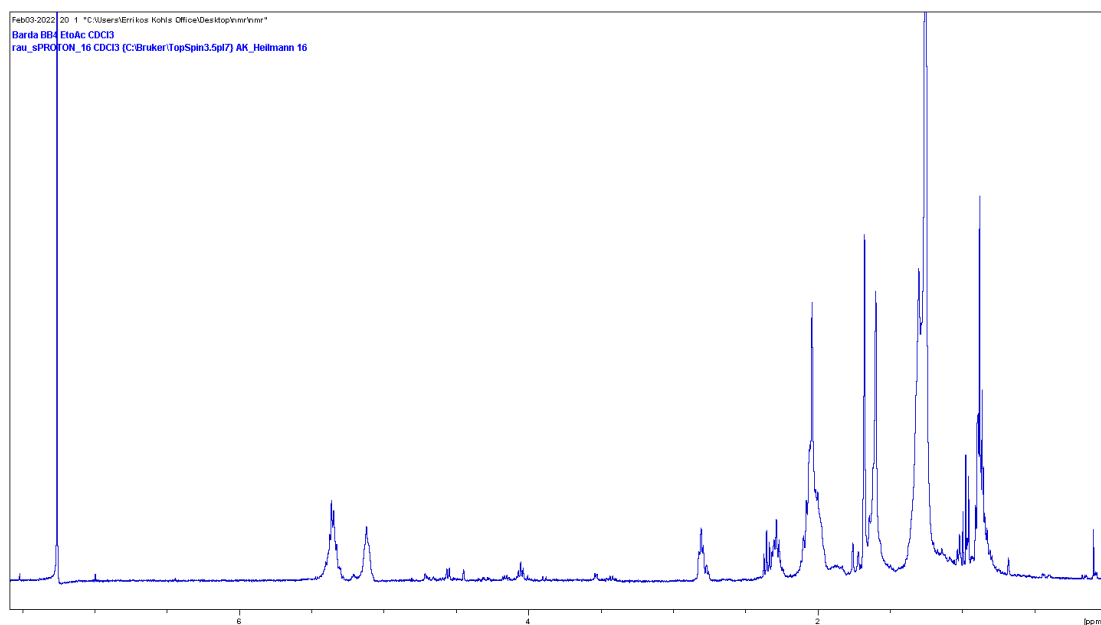


Figure S6. ^1H NMR (CDCl_3) spectrum 4-BB-Et.

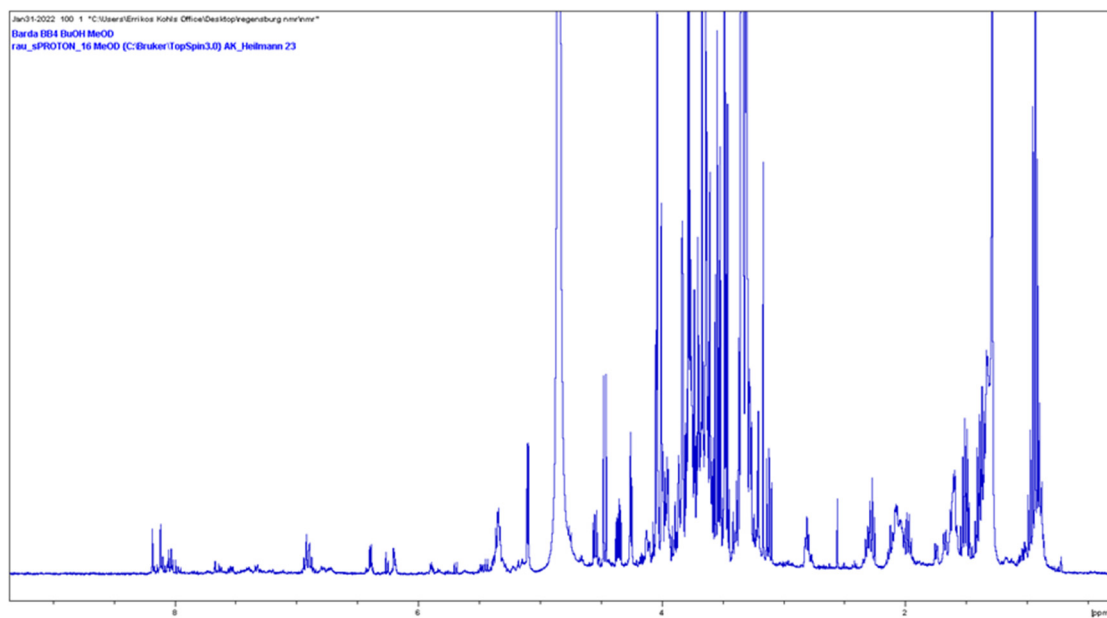


Figure S7. ^1H NMR (MeOD) spectrum 4-BB-Bu.

S.1.3. NMR spectra of 6P-BCP

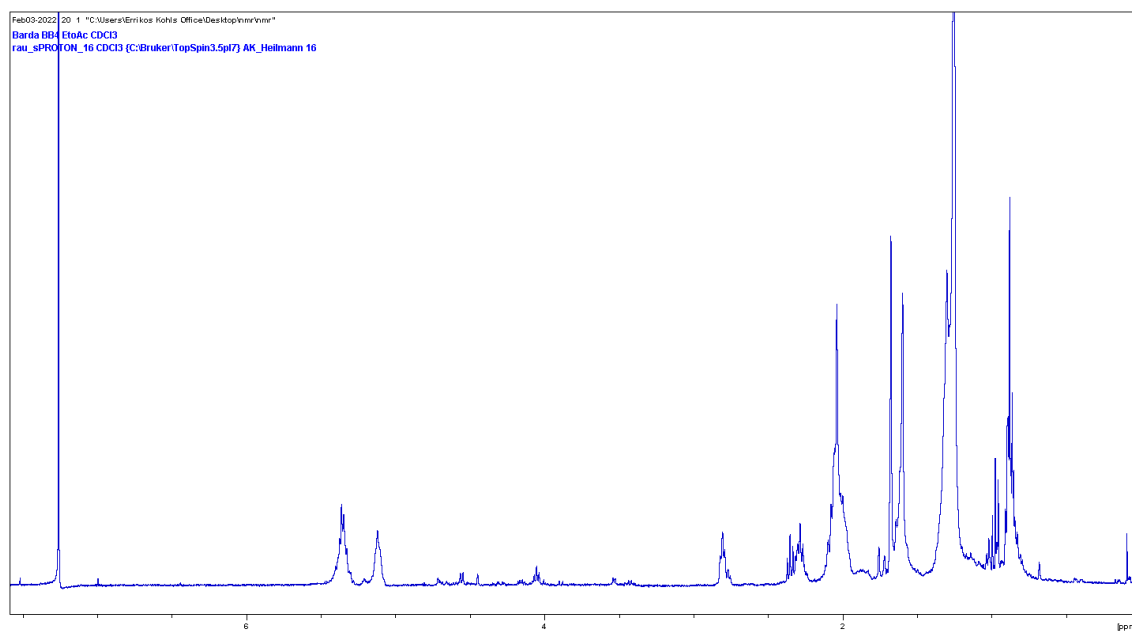


Figure S8. ¹H NMR (600 MHz, CDCl₃) of 6P-BCP-Et.

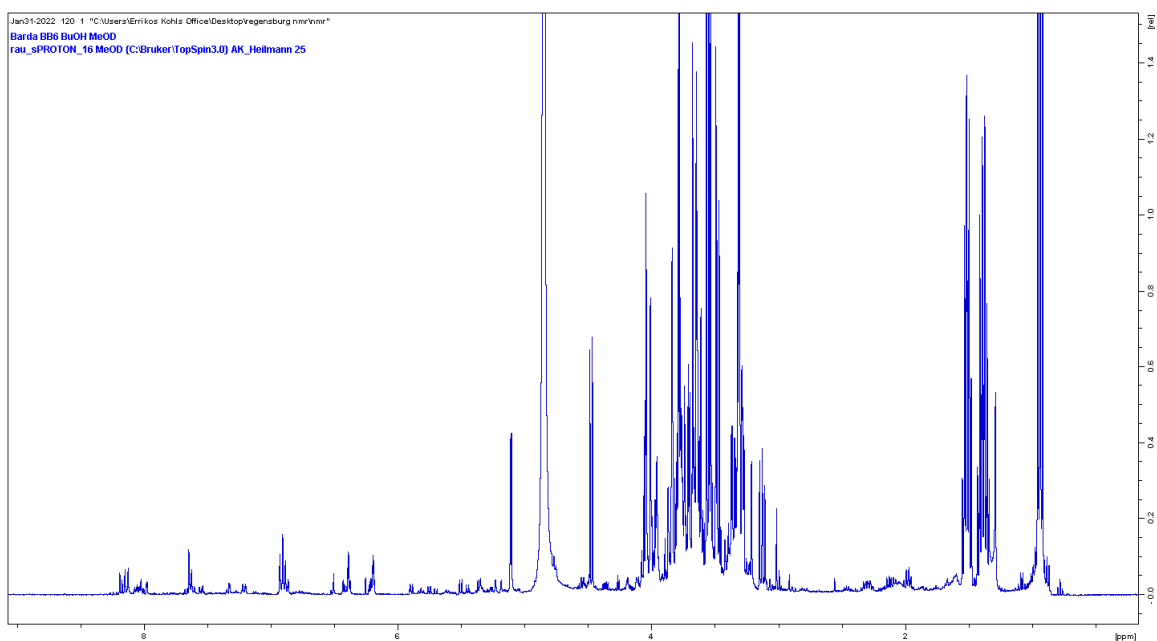


Figure S9. ¹H NMR (600 MHz, MeOD) of 6P-BCP-Bu.

S.2. LC-MS chromatograms of 1-BB-Bu, 4-BB-Bu and 6P-BCP-Bu

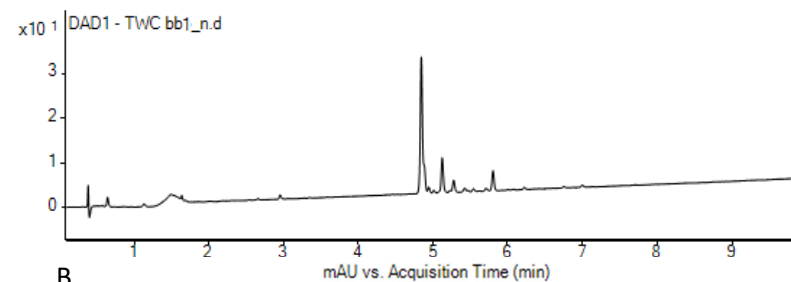
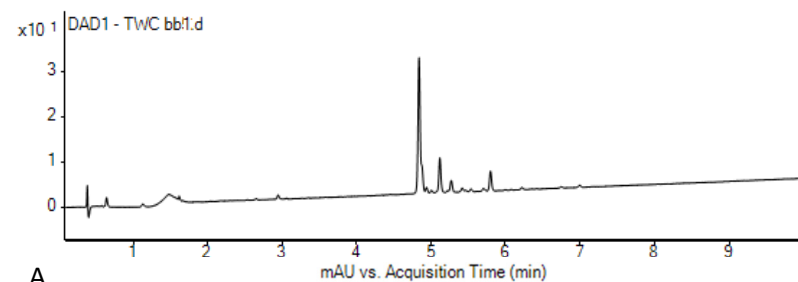
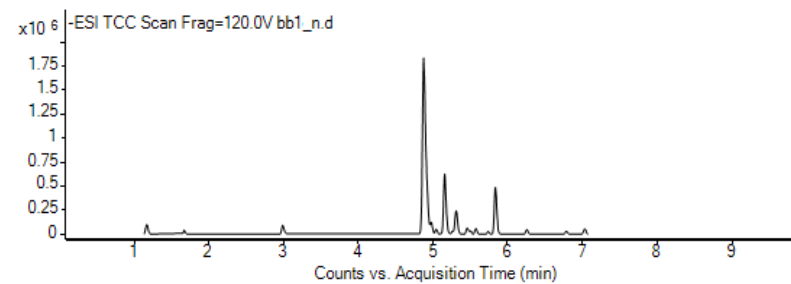
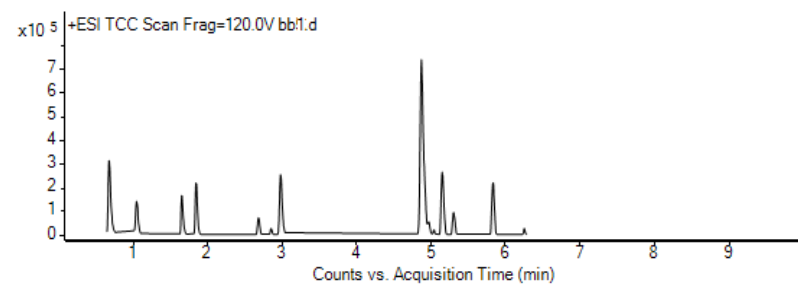
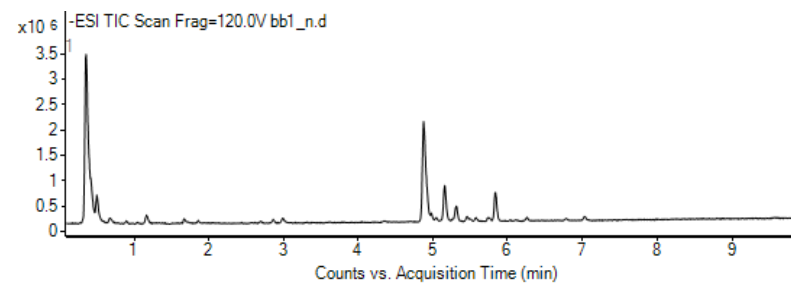
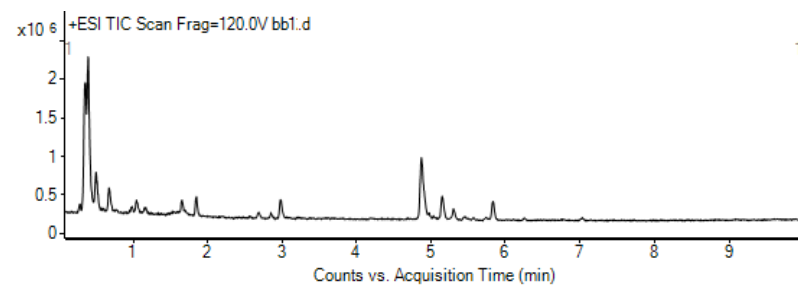


Figure S10. LC-ESI-MS of 1-BB-Bu extract in positive (A) and negative (B) ion modes.

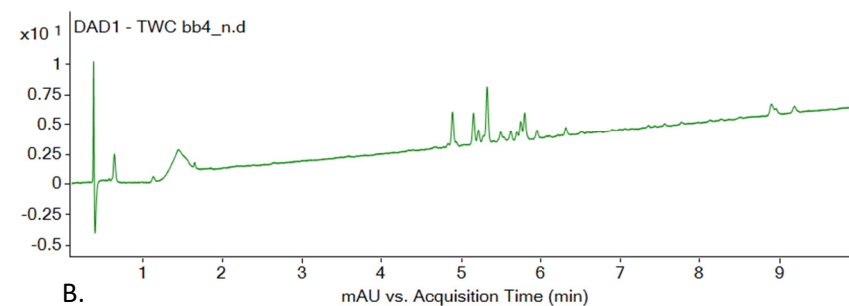
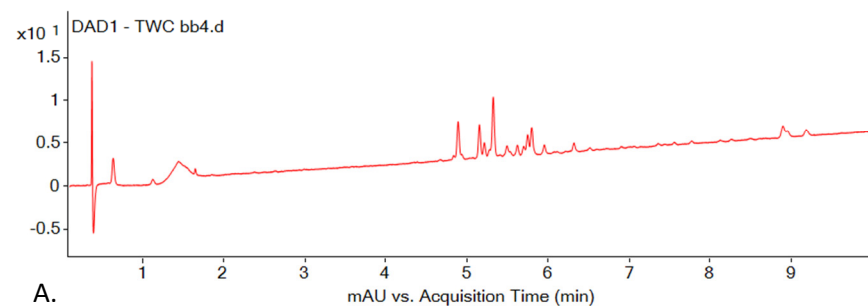
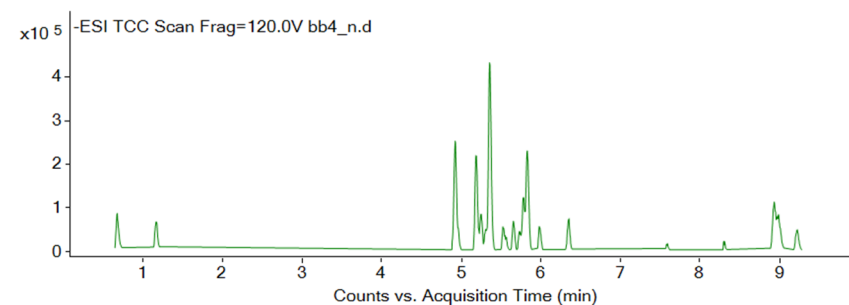
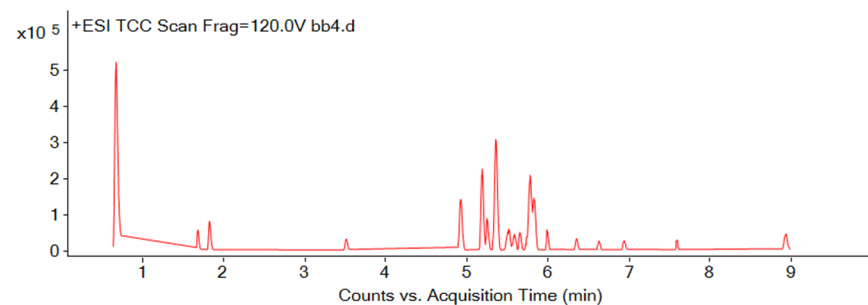
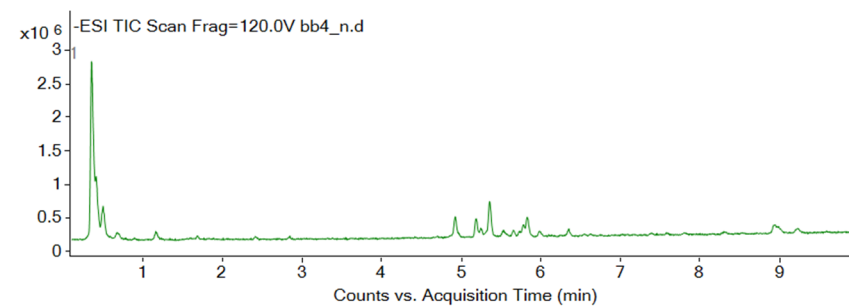
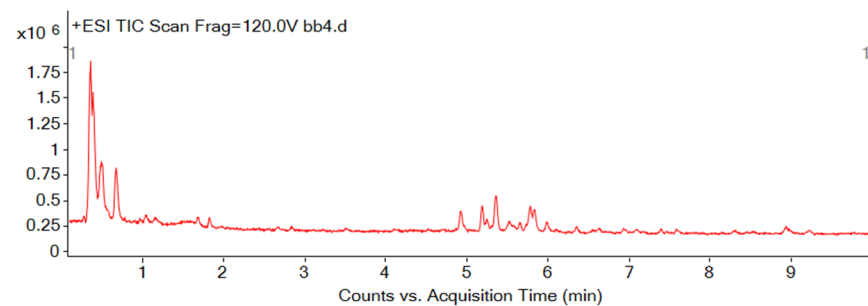


Figure S11. LC-ESI-MS of 4-BB-Bu extract in positive (A) and negative (B) ion modes.

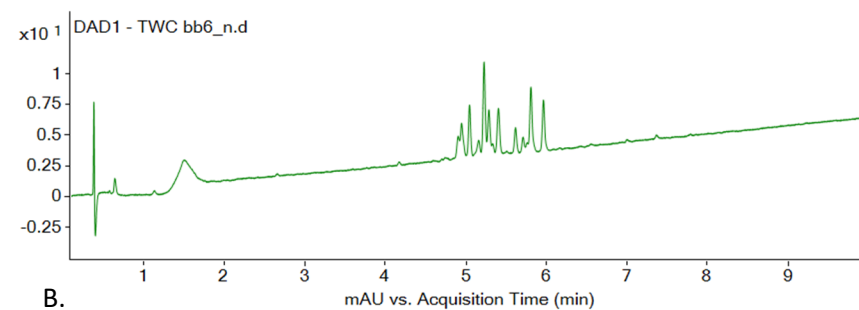
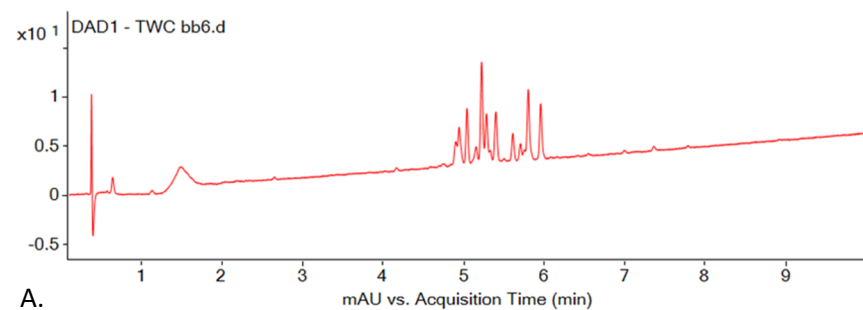
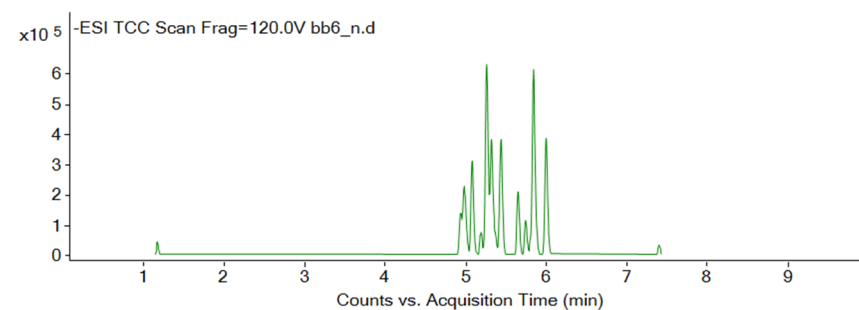
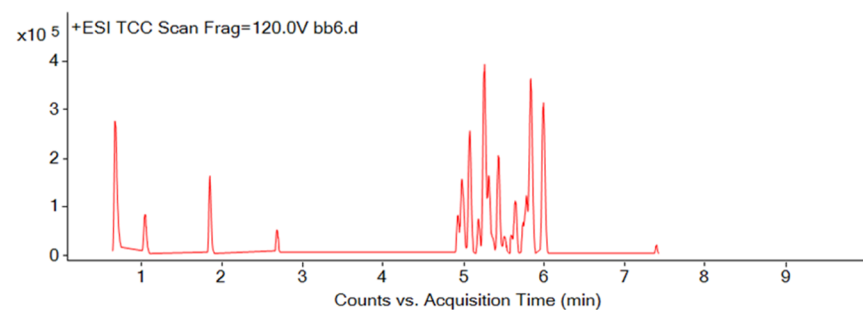
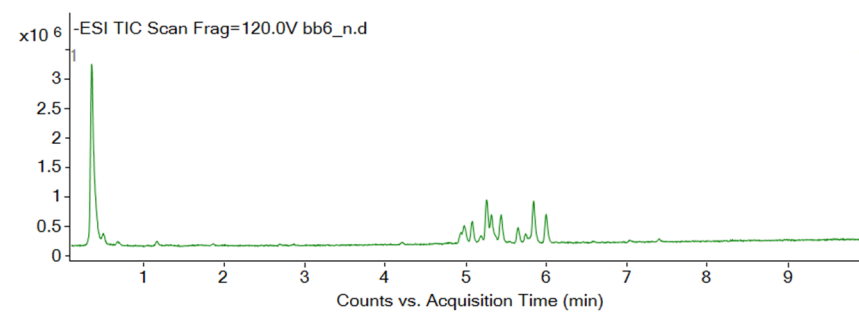
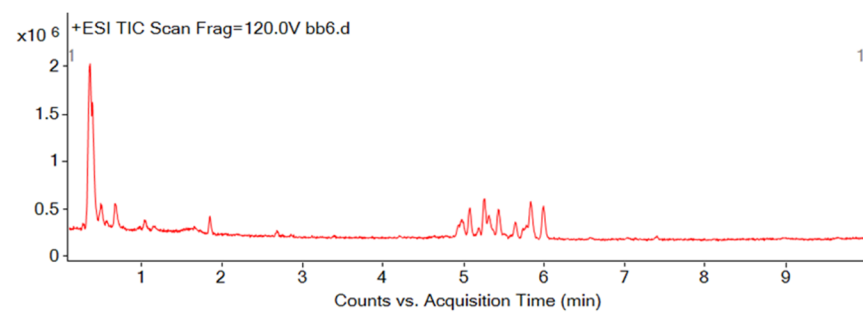


Figure S12. LC-ESI-MS of 6P-BCP-Bu extract in positive (A) and negative (B) ion modes.

S.3. GC-MS chromatograms of the fractions 1-BB-Et, 4-BB-Et and 6P-BCP-Et

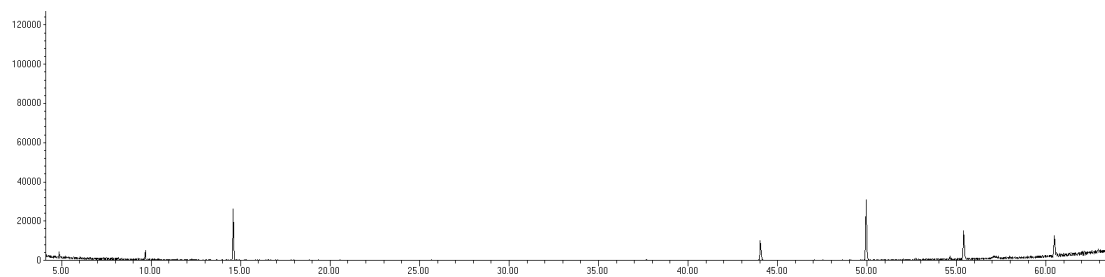


Figure S13. GC-MS chromatogram of 1-BB-Et.

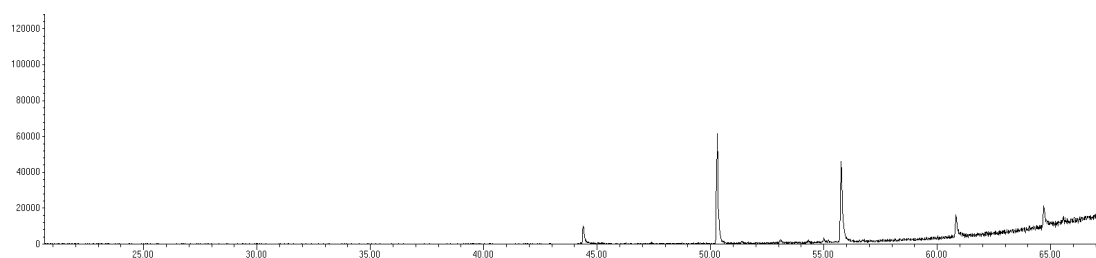


Figure S14. GC-MS chromatogram of 4-BB-Et.

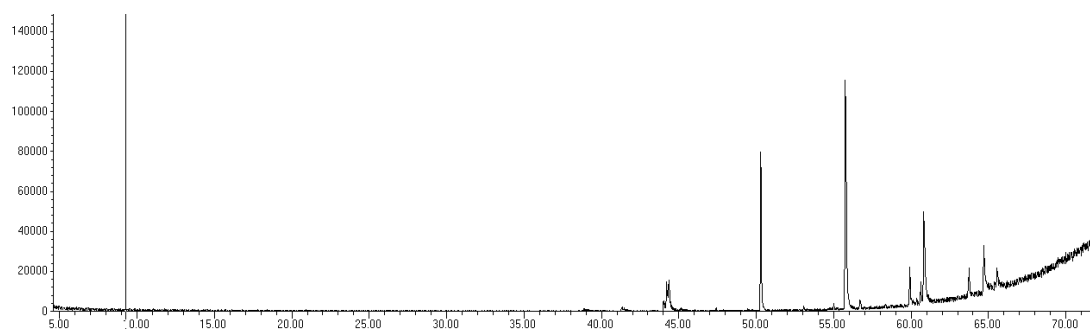


Figure S15. GC-MS chromatogram of 6P-BCP-Et.