

Figure S1. Volcano plots of DAMs in pairwise comparisons between: (A) PL1 and PL2; (B) PL3 and PL1; (C) PL2 and PL4; and (D) PL3 and PL4. The sample labels are defined in Table 1.

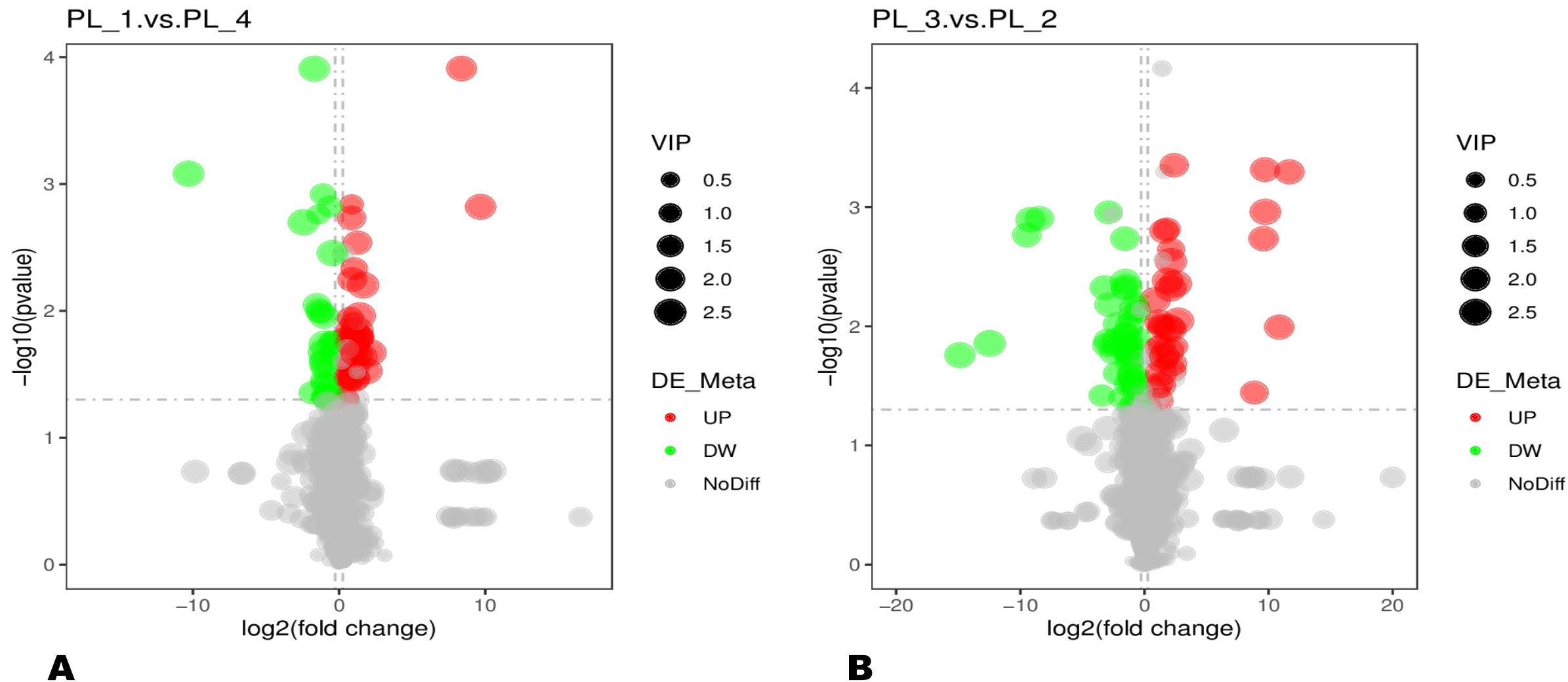


Figure S2. Volcano plots of DAMs in pairwise comparison between PL1.vs.PL4 (A) and PL3.vs.PL2 (B). The sample labels are defined in Table 1.

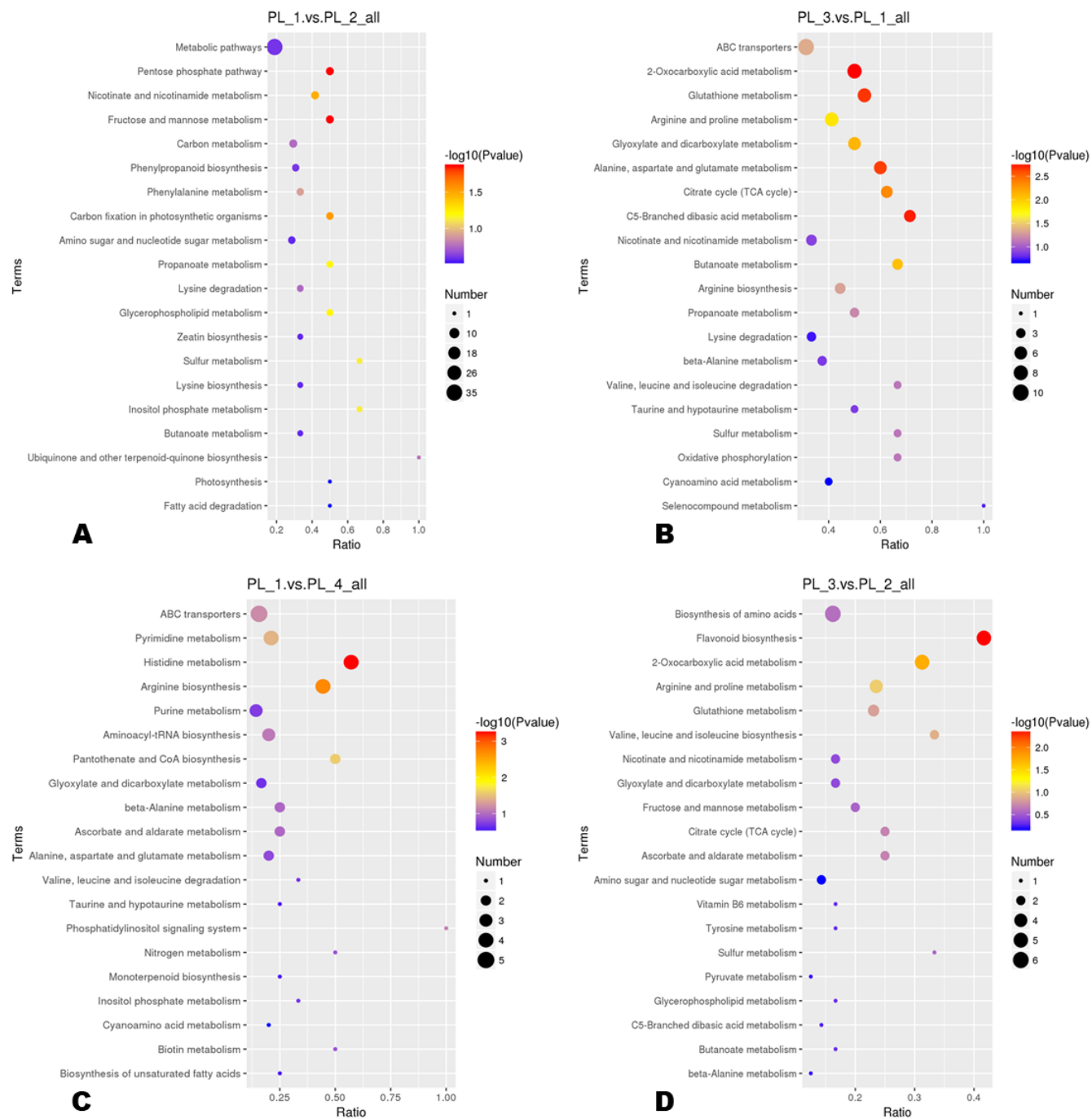


Figure S3. KEGG annotations and enrichment results of the DAMs in pairwise comparison between: (A) PL1.vs.PL2, (B) PL3.vs.PL1, (C) PL1.vs.PL4, and (D) PL3.vs.PL2 (B). The sample labels are defined in Table 1.

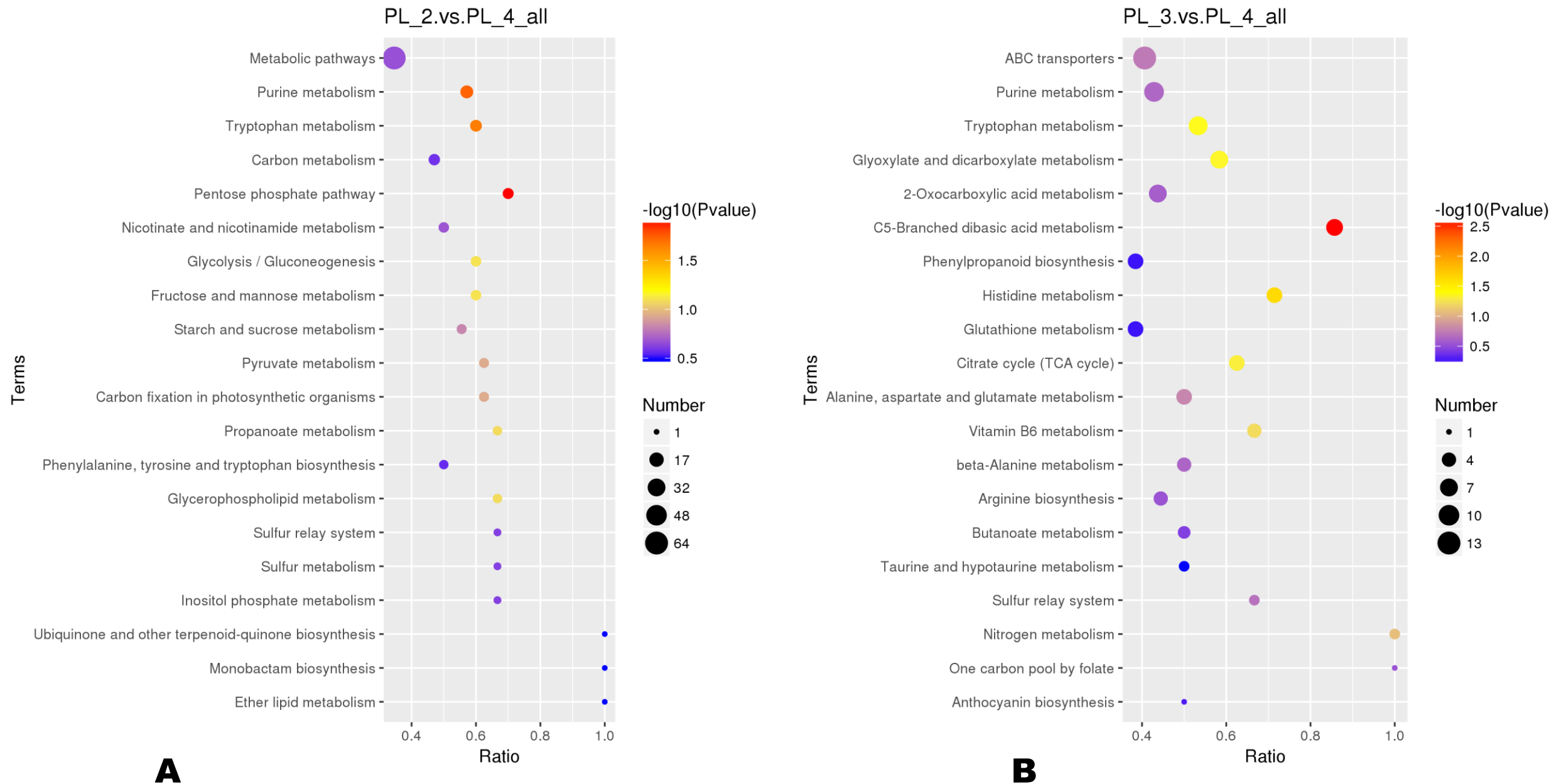


Figure S4. KEGG annotations and enrichment results of the DAMs in pairwise comparison between PL2.vs.PL4 (A) and PL3.vs.PL4 (B). The sample labels are defined in Table 1.

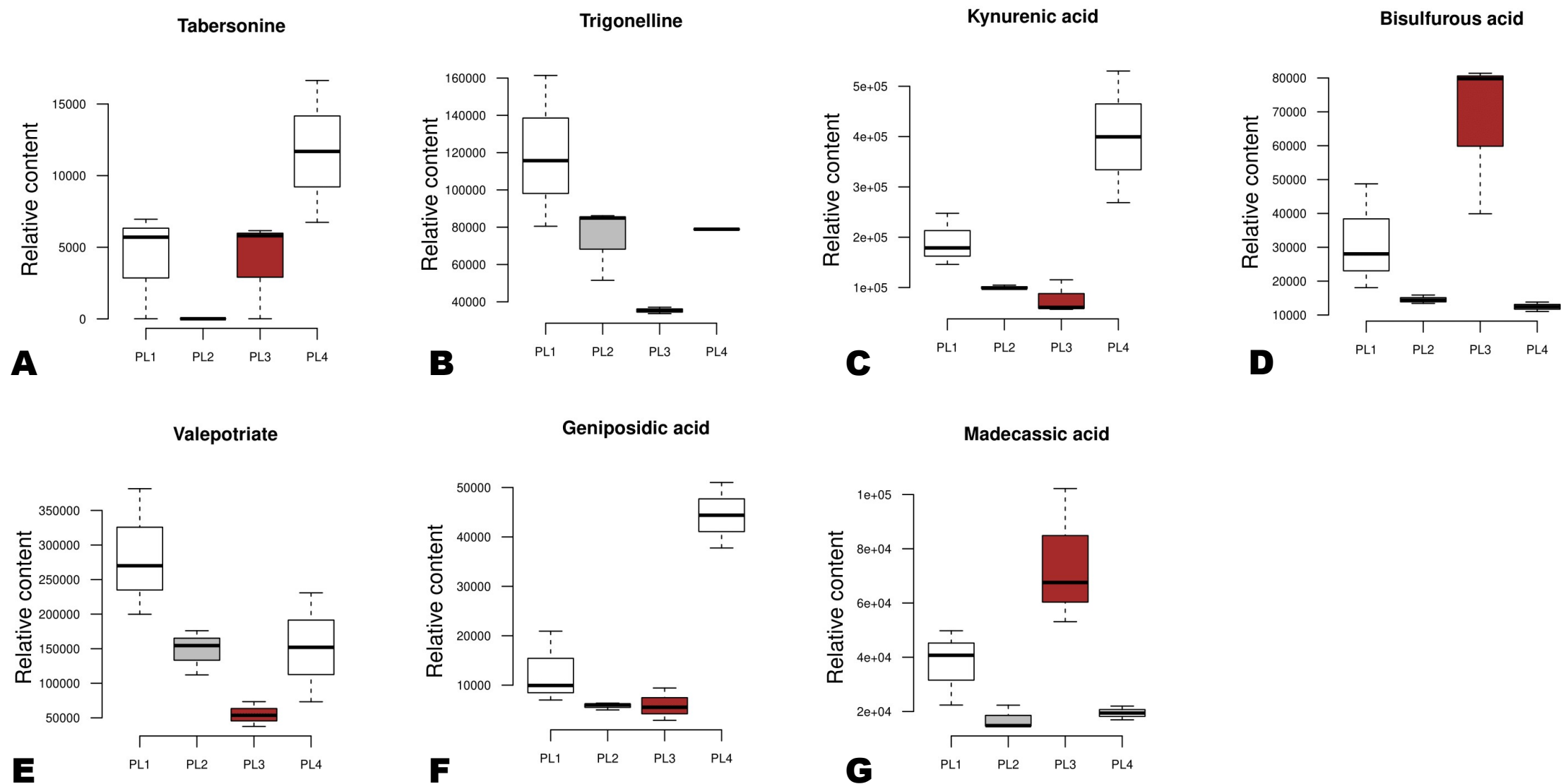


Figure S5. Relative content of key differentially accumulated bioactive alkaloids (A and B), quinones (C and D), and terpenoids (E-G) in the different perilla seeds. The sample labels are defined in Table 1.