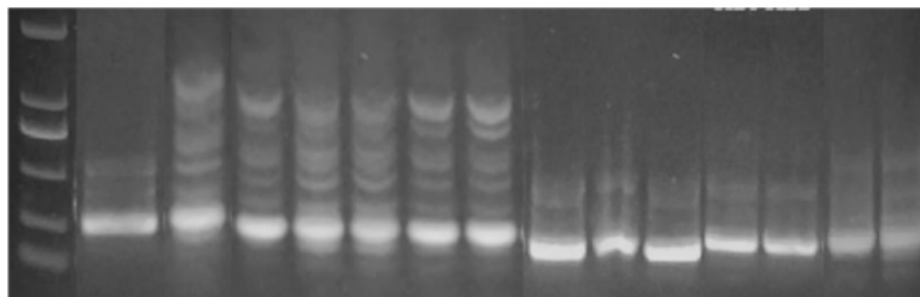
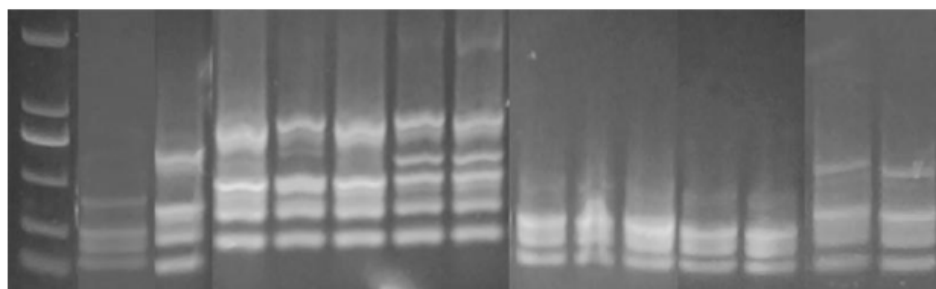


Figure S1: Maximum bacterial growth (change in optical density at 595 nm) of 126 isolates in the presence of 1% glucose, lactose, and 2'-fucosyllactose (2'-FL) during 48 h of incubation.

(A) D2000 Y10 Y39 Y46 Y34 Y45 Y30 Y33 H3 H4 H5 H21 H22 S39 S40



(B) D2000 Y10 Y39 Y46 Y34 Y45 Y30 Y33 H3 H4 H5 H21 H22 S39 S40



(C) D2000 Y10 Y39 Y46 Y34 Y45 Y30 Y33 H3 H4 H5 H21 H22 S39 S40

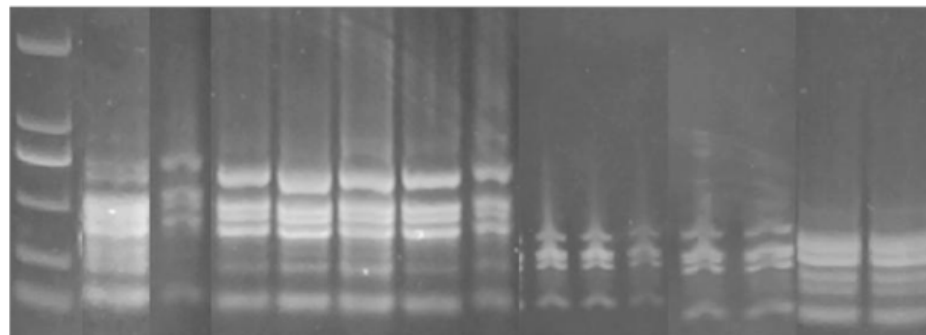


Figure S2 RAPD electropherogram of isolated bifidobacteria able to use 2'-fucosyllactose effectively using three random primers S23 (A), S228 (B), and S396 (C)