

## **Supplementary materials**

### **Novel Peptides LFLLP and DFFL from Jack Bean Protein Hydrolysates Suppress the Inflammatory Response in Lipopolysaccharide-stimulated RAW 264.7 Cells**

**Bambang Dwi Wijatniko<sup>ab</sup>, Yoshiki Ishii<sup>a</sup>, Makoto Hirayama<sup>a</sup>, Takuya Suzuki<sup>a\*</sup>**

<sup>a</sup> Graduate School of Integrated Sciences for Life, Hiroshima University, Higashi-Hiroshima, 739-8528, Japan

<sup>b</sup> Department of Food and Agricultural Product Technology, Universitas Gadjah Mada, Yogyakarta, 55281, Indonesia

**\*Correspondence to:**

Takuya Suzuki,

Graduate School of Integrated Sciences for Life, Hiroshima University,

Higashi-Hiroshima 739-8528, Japan.

E-mail : [takuya@hiroshima-u.ac.jp](mailto:takuya@hiroshima-u.ac.jp)

Tel : +81-82-424-7984

Fax : +81-82-424-7916

ORCID: [orcid.org/0000-0003-3709-543X](https://orcid.org/0000-0003-3709-543X)

**Table S1** Primer sequences for qRT-PCR

Target genes	Forward (5' to 3')	Reverse (5' to 3')
Mouse <i>Tnfa</i>	TCGTAGCAAACCAACCAAGTG	CTTTGAGATCCATGCCGTTG
Mouse <i>Rps28</i>	ATCAAGCTGGCTAGGGTAACC	GGCCTTTGACATTCGGATGA

**Table S2.** Information about antibodies used in this study

Antibody	Vender	Catalogue No.	Dilution	
			Immunoblot	Immunofluorescence
Rabbit anti-phospho SAPK/JNK (Thr 183/Tyr 182)	Cell Signaling Technology	9251S	1:8,000	NA
Rabbit-phospho-p38 (Thr180/Tyr182)	Cell Signaling Technology	4511S	1:3,000	1:800
Rabbit-phospho-Erk1/2 (Thr202/Tyr204)	Cell Signaling Technology	4370S	1:3,000	NA
Rabbit-phospho-p65 (Ser536)	Cell Signaling Technology	3033S	1:3,000	NA
Goat anti-rabbit IgG-HRP	SeraCare	074-1506	1:15,000	NA
Goat anti-rabbit IgG-AlexaFluor488	Abcam	Ab15007	NA	1:200

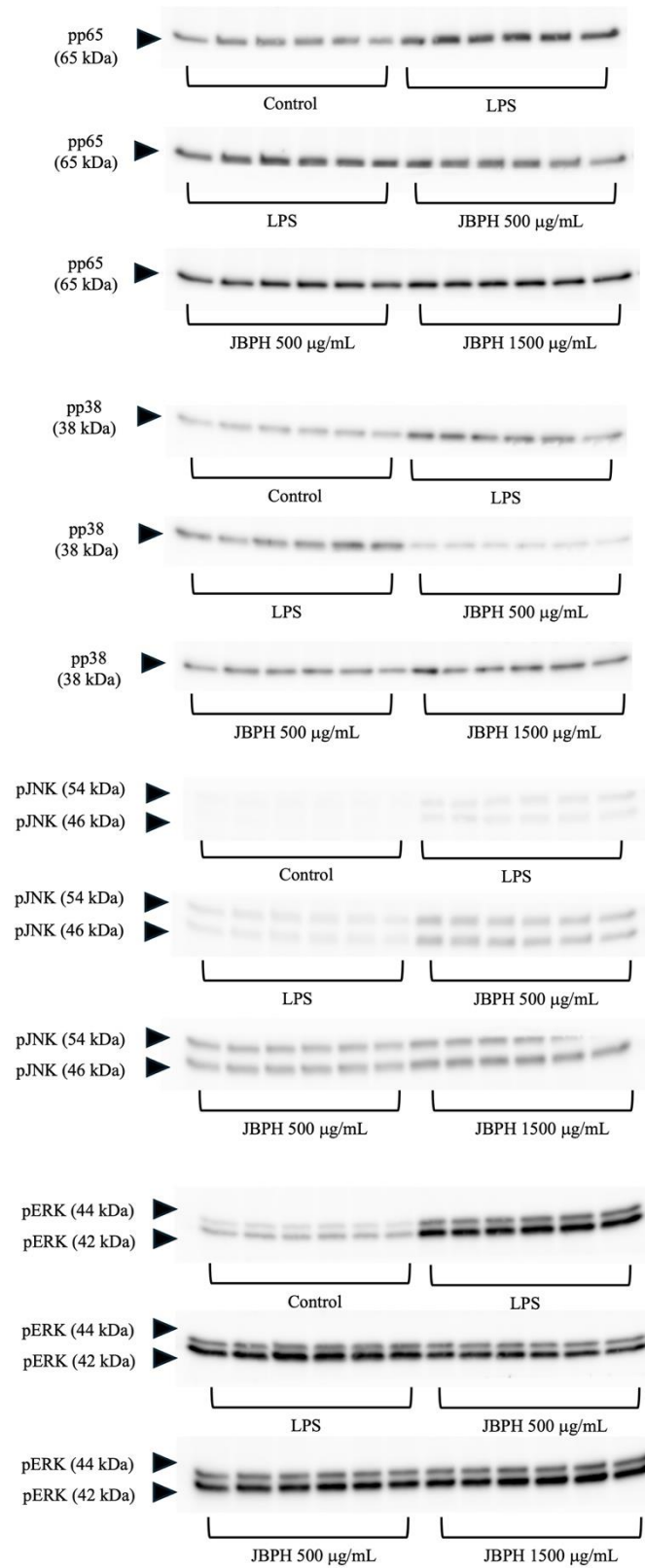


Figure S1 Representative of original western blotting (chemiluminescence) from JBPH

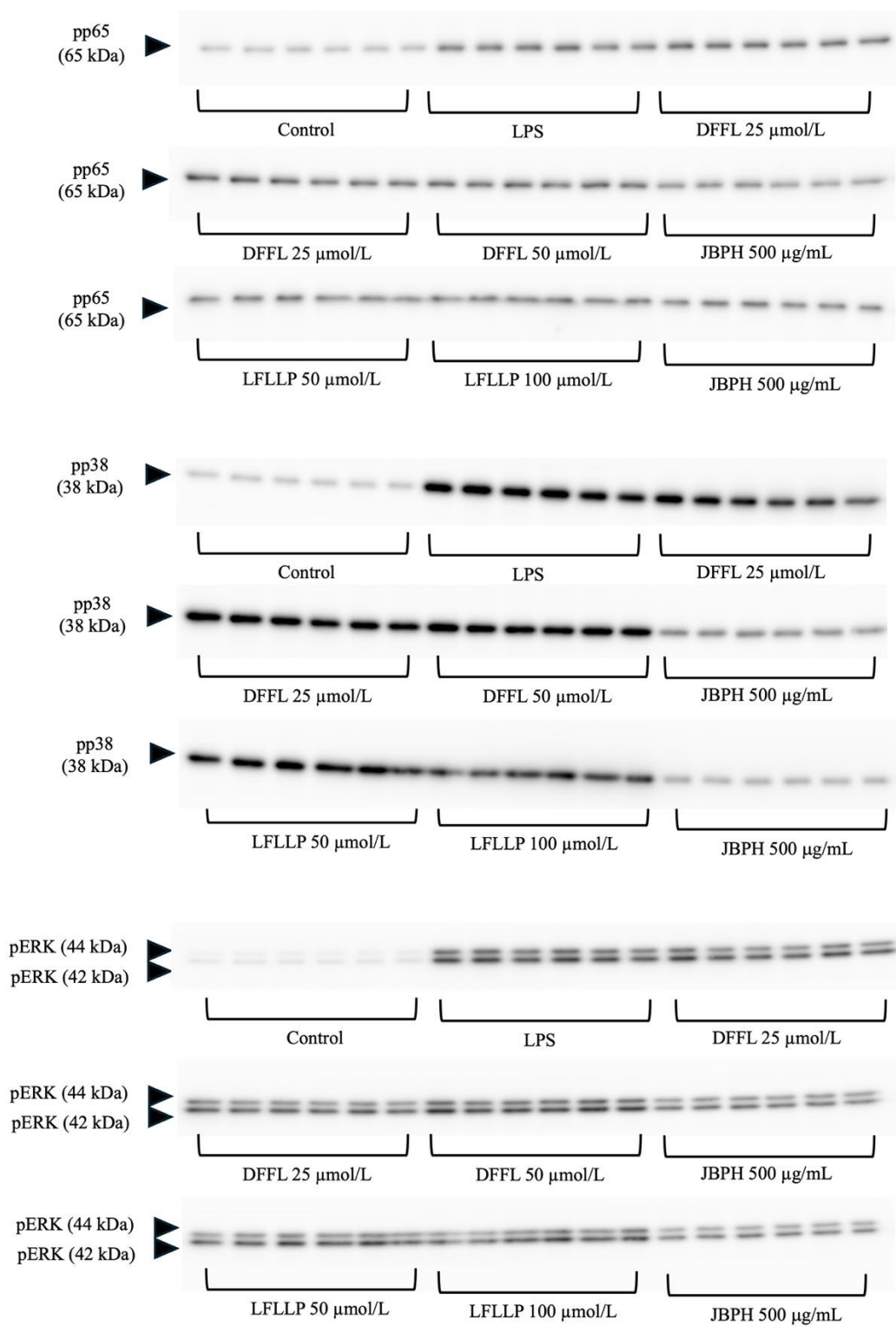


Figure S2 Representative of original western blotting (chemiluminescence) from peptides LFLLP and DFFL