

Supplementary Materials for

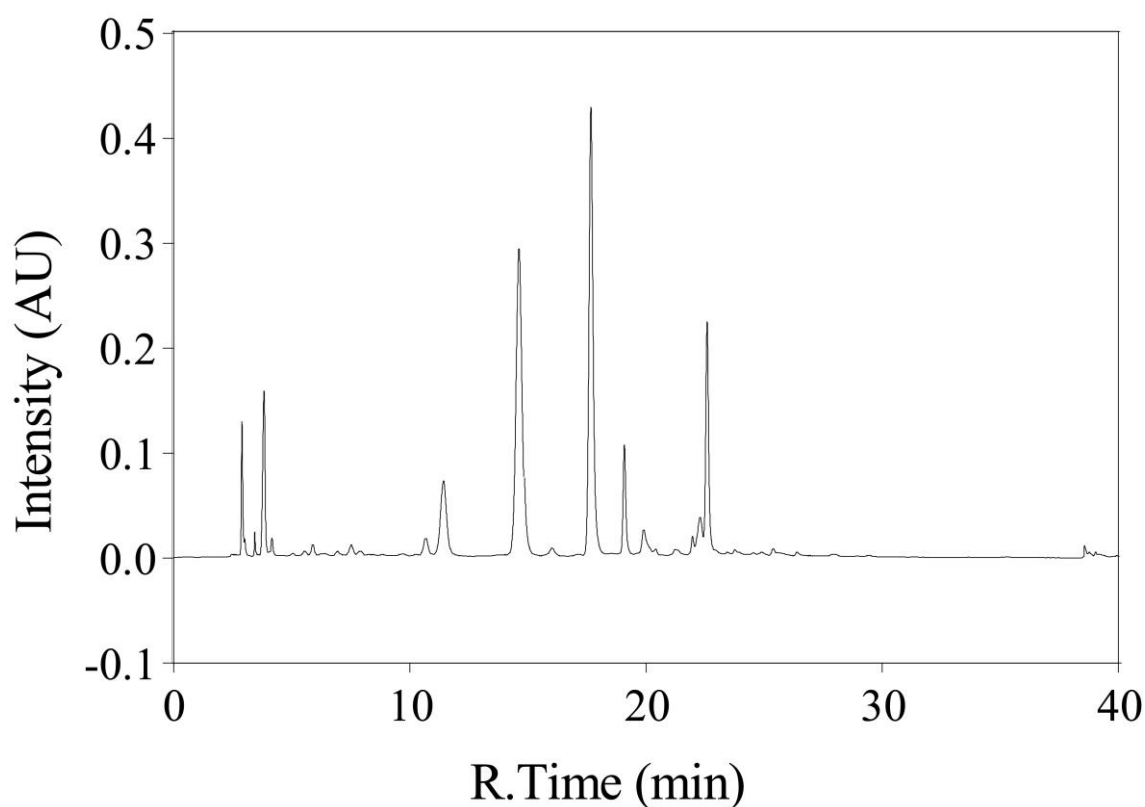
# Profiling of Potential Anti-Diabetic Active Compounds in White Tea: An Integrated Study of Polyphenol-Targeted Metabolomics, Network Pharmacology, and Computer Simulation

Weiwei Wu, Zhiqiang Zheng, Zhihui Wang, Chenxi Gao, Yilin Liang, Wen Zeng and Weijiang Sun \*

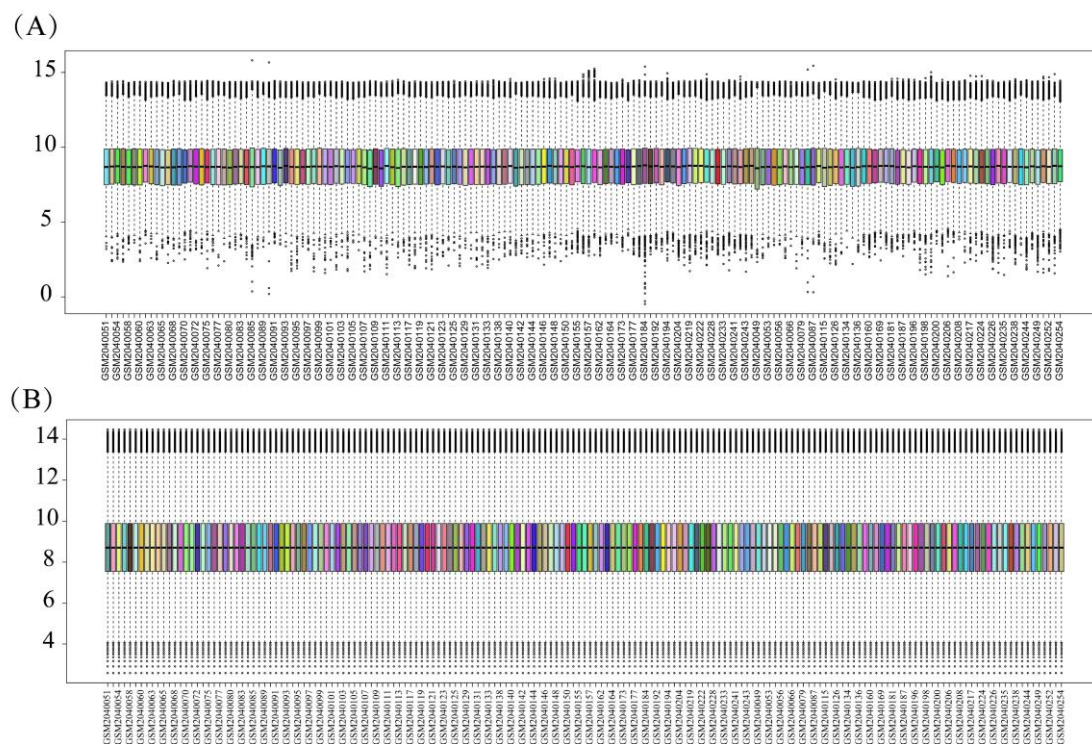
College of Horticulture, Fujian Agriculture and Forestry University, Fuzhou 350002, China; wweiwei0601@163.com (W.W.); zzq000422@163.com (Z.Z.); wzh1246900265@163.com (Z.W.); gaochenxi@163.com (C.G.); ly1908213@163.com (Y.L.); wenzeng\_t@163.com (W.Z.)

\* Correspondence: 000q020007@fafu.edu.cn

## Supplementary Figure Material



Supplementary Figure S1. Targeted Metabolomics Profiling of Polyphenols in White Tea.



**Supplementary Figure S2.** Boxplot of Standardized GSE76896 Dataset.