

Supplementary Material

Table S1. Minimum and maximum levels (%) of O₂ and CO₂ in the measured gas mixtures introduced to the gas-washing bottle incubation system (GBIS) for each condition during 13 consecutive days

Conditions (O₂%/ CO₂%/ N₂%)	Flushing gas composition	
	O₂% (min:max)	CO₂% (min:max)
MAP1 (0/20/80)		
MAP1_1 (1st experiment)	0.01 : 0.09	20.1 : 22.4.
MAP1_2 (2nd experiment)	0.00 : 0.01	20.0 : 21.1
MAP2 (0/40/60)		
MAP2_1 (1 st experiment)	0.00 : 0.01	40.0 : 41.0
MAP2_2 (2 nd experiment)	0.00 : 0.01	40.0 : 41.7
MAP3 (0/60/40)		
MAP3_1 (1 st experiment)	0.01 : 0.10	60.0 : 61.6
MAP3_2 (2 nd experiment)	0.01 : 0.02	60.0 : 62.5

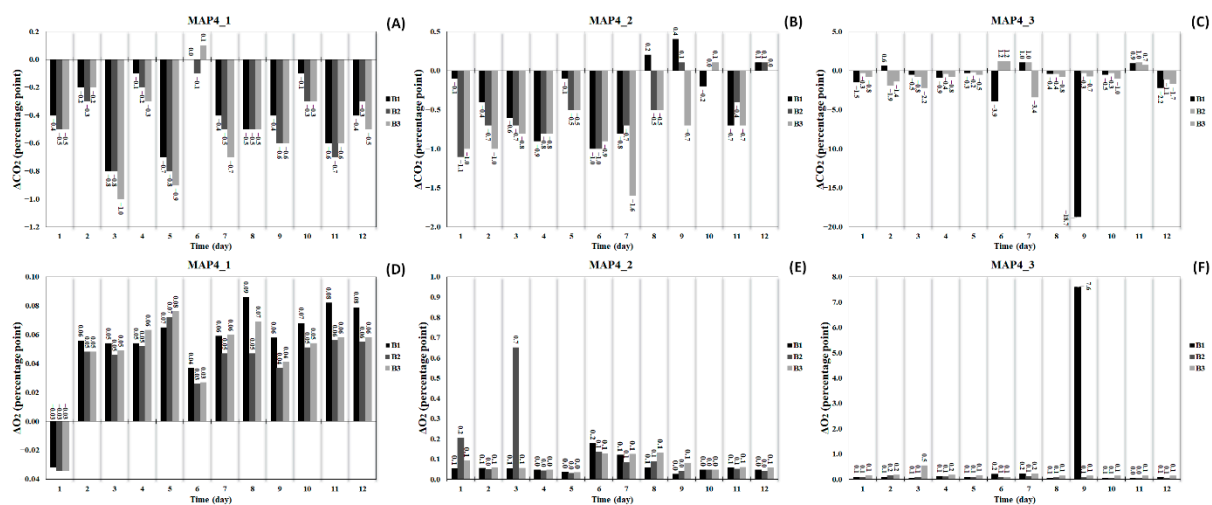


Figure S1. Overnight changes in headspace CO₂ and O₂ concentration in 1st bottle (B1), 2nd bottle (B2) and 3rd bottle (B3) under the following condition CO₂%/O₂%/N₂%: 60/0/40 at 7 °C for MAP4_1: 1st experiment (A and D), MAP4_2: 2nd experiment (B and E), and MAP4_3: 3rd experiment (C and F).

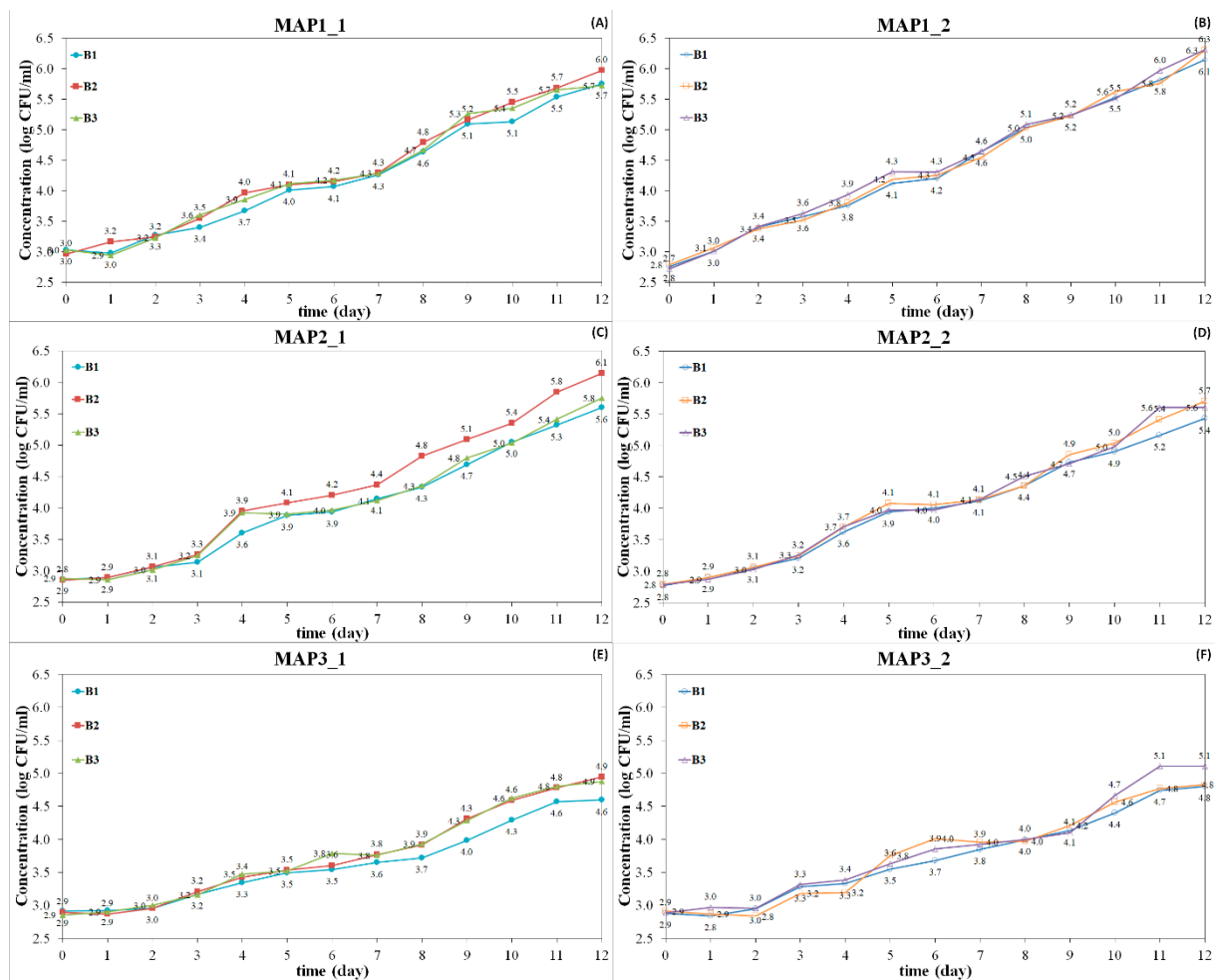


Figure S2. Growth curves obtained from 1st bottle (B1), 2nd bottle (B2) and 3rd bottle (B3) for following conditions CO₂%/O₂%/N₂%: 20/0/80 for MAP1_1: 1st experiment (A) and for MAP1_2: 2nd experiment (B), 40/0/60 for MAP2_1: 1st experiment (C) and MAP2_2: 2nd experiment (D), 60/0/40 for MAP3_1: 1st experiment (E) and MAP3_2: 2nd experiment (F).

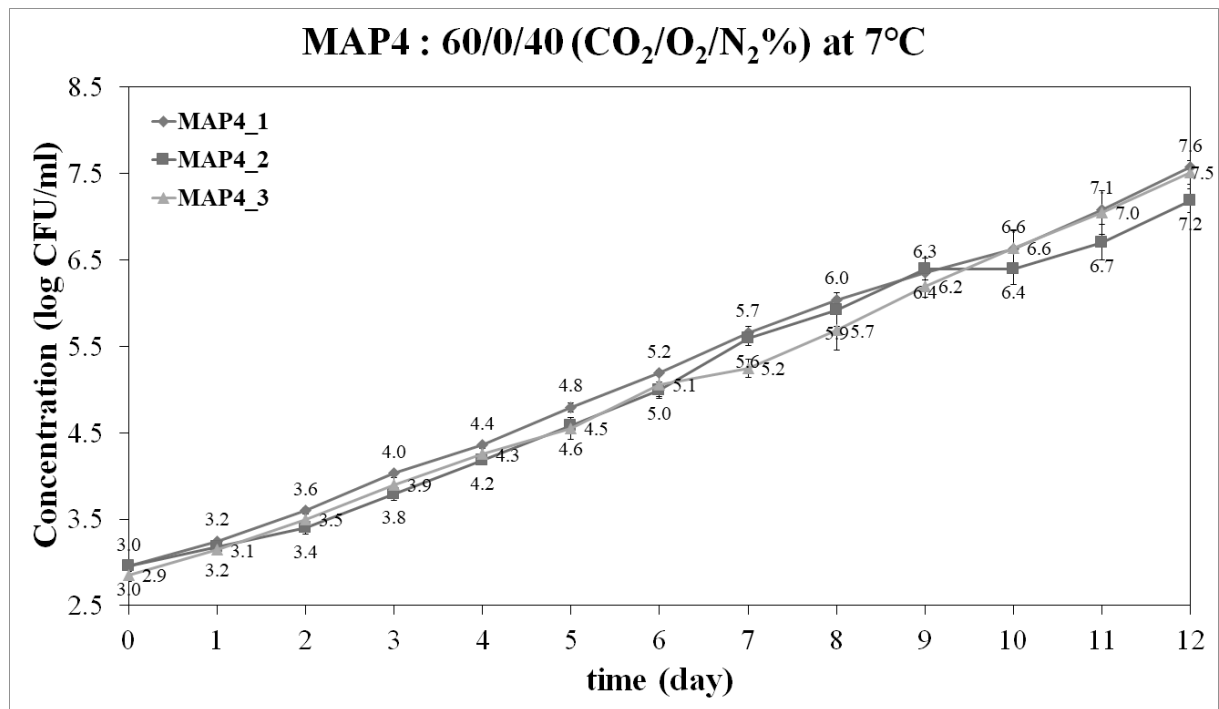


Figure S3. Growth curves of *L. monocytogenes* within a 13-day experiment under the following condition CO₂%/O₂%/N₂%: 60/0/40 for MAP4_1: 1st experiment, MAP4_2: 2nd experiment, and MAP4_3: 3rd experiment (error bars denote standard deviation, $n=3$ for MAP4_1 MAP4_2 and MAP4_3).