

Figure S1. Sampling site location. Illustration of the map depicting the geographical location of the Sfisifa region of Naama in western Algeria ($32^{\circ} 44' N$ $0^{\circ} 52' W$).

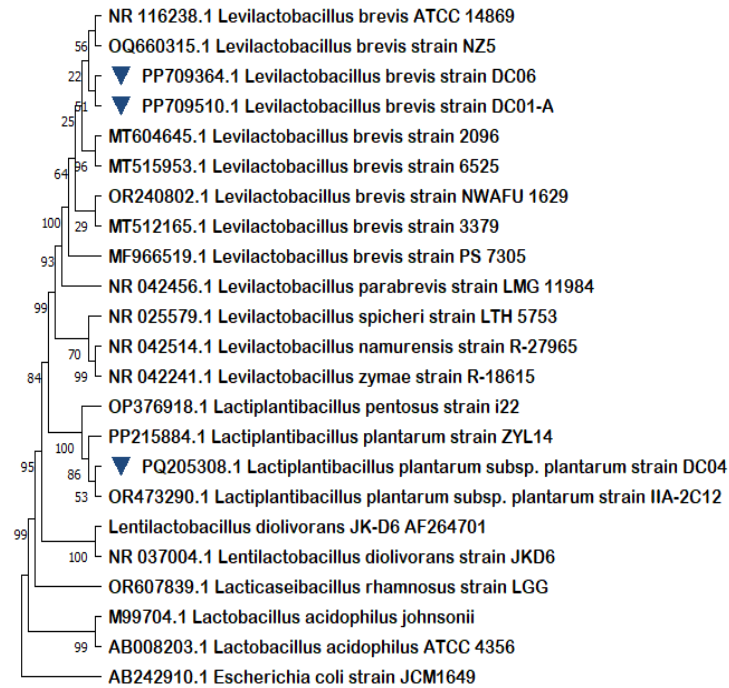
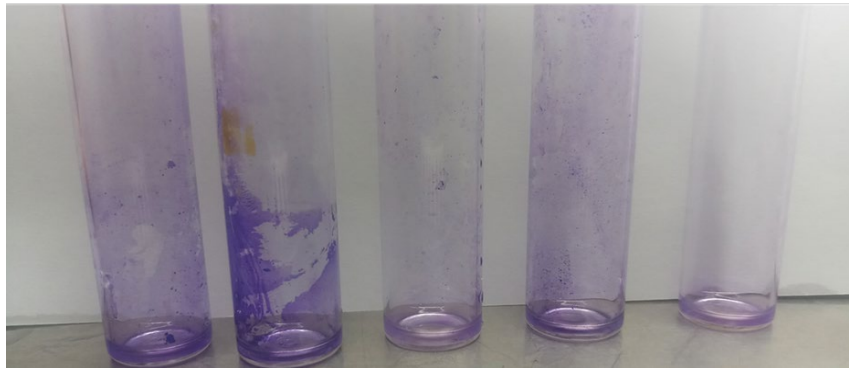


Figure S2. Phylogenetic tree based on the 16S rRNA gene sequences of *Lactobacillus* strains (marked with a blue triangle). *Escherichia coli* JCM1649 was used as an outgroup reference strain. The scale bar represents 0.02 nucleotide substitution per site.



DC01-A (3) DC04 (4) DC06 (2) LGG (3) Control (0)

Figure S3. Biofilm Formation of *Lactobacillus* strains. Biofilm adhesion levels were quantified on a scale from 0 (no adhesion) to 4 (strong adhesion). DC01-A: *Levilactobacillus brevis*; DC04: *Lactiplantibacillus plantarum*; DC06: *Levilactobacillus brevis*.