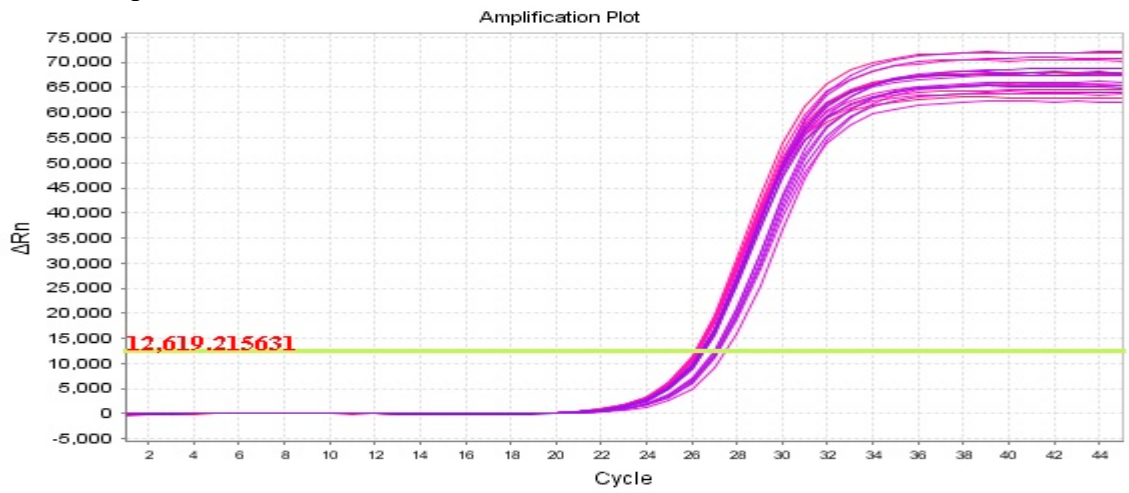
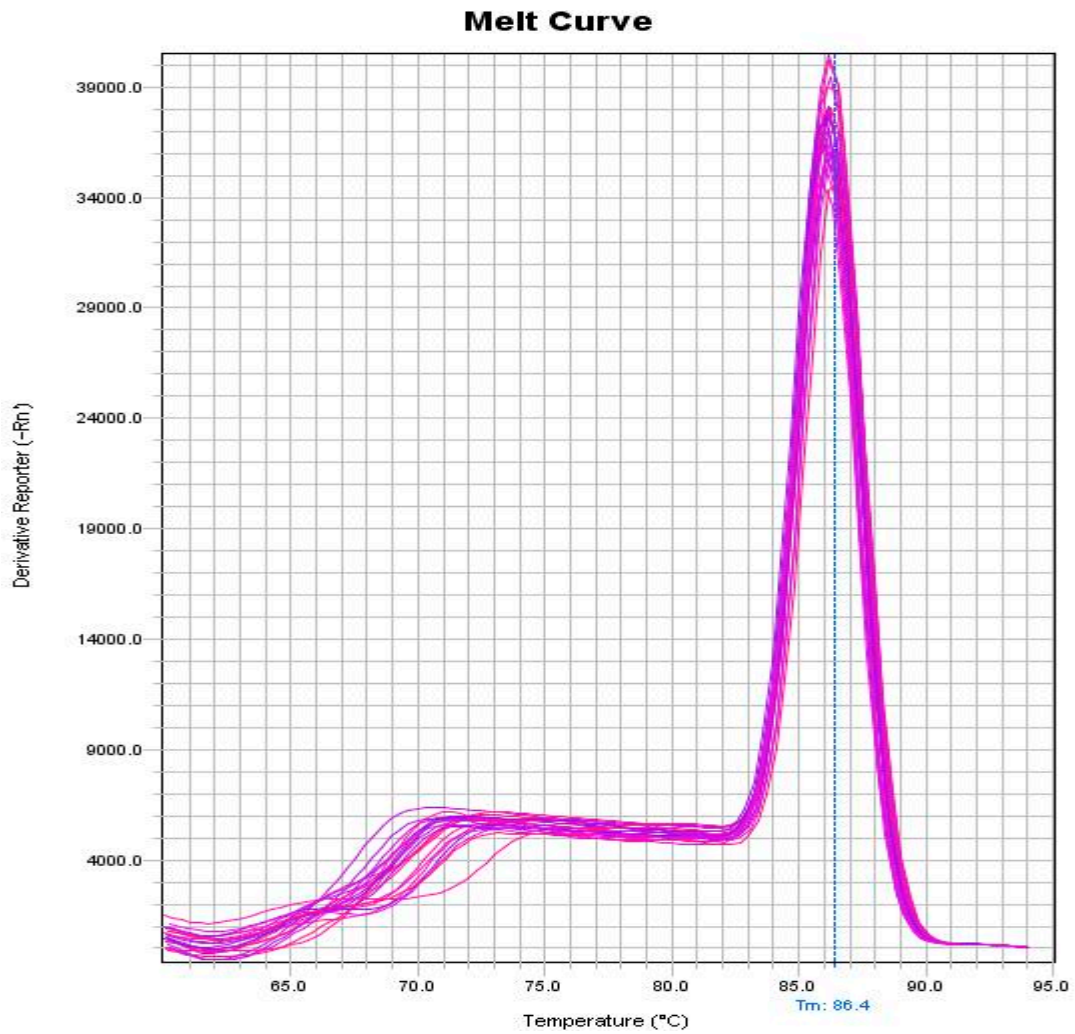


**Figure S1.** Effects of SQWP-1 and SQWP-2 on 3T3-L1 cells inhibiting differentiation.

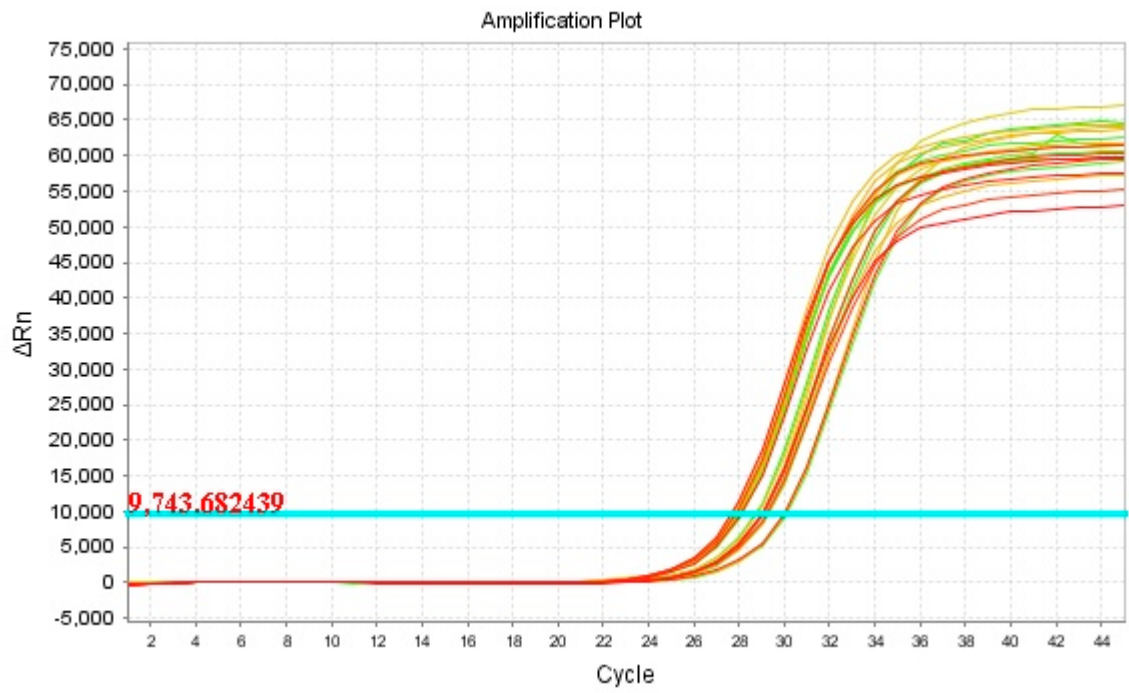
### $\beta$ -actin: Amplification curve



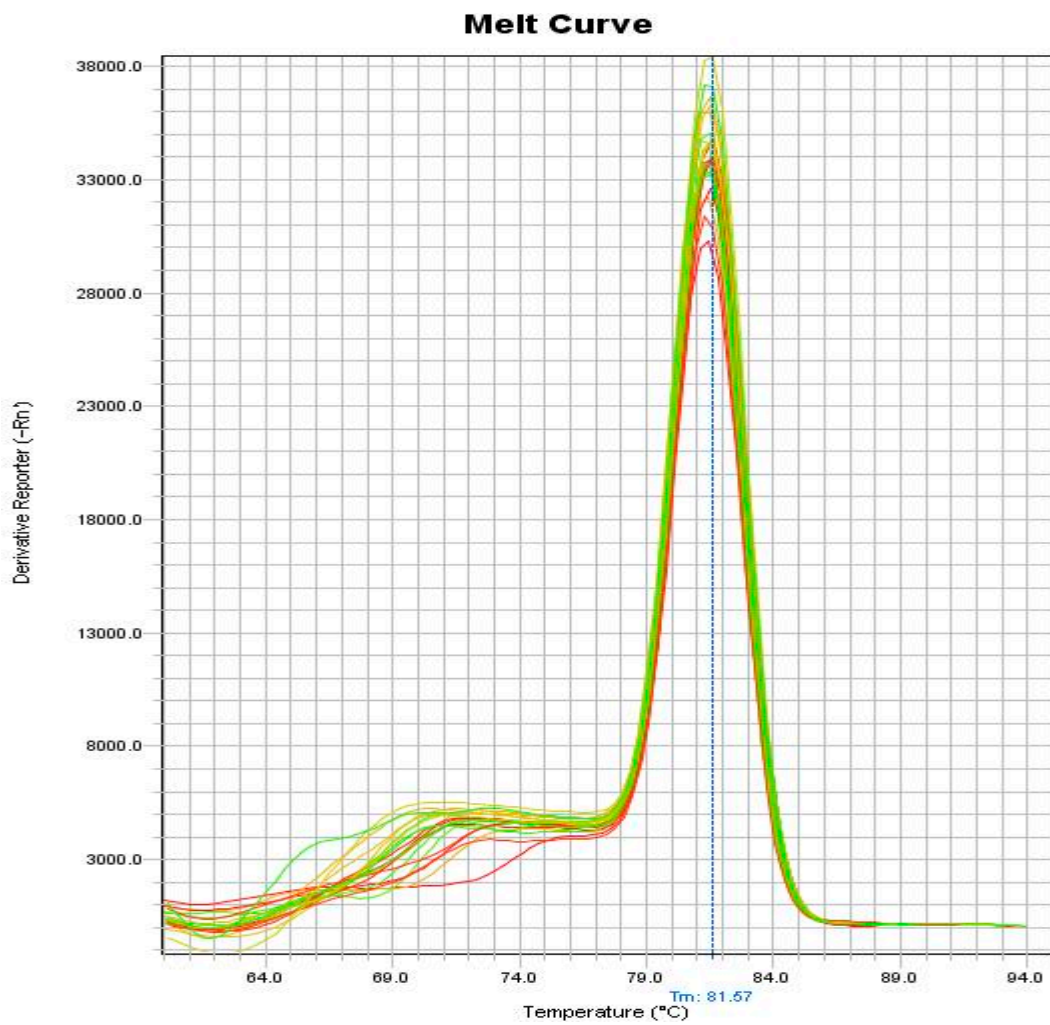
### Dissolution curve



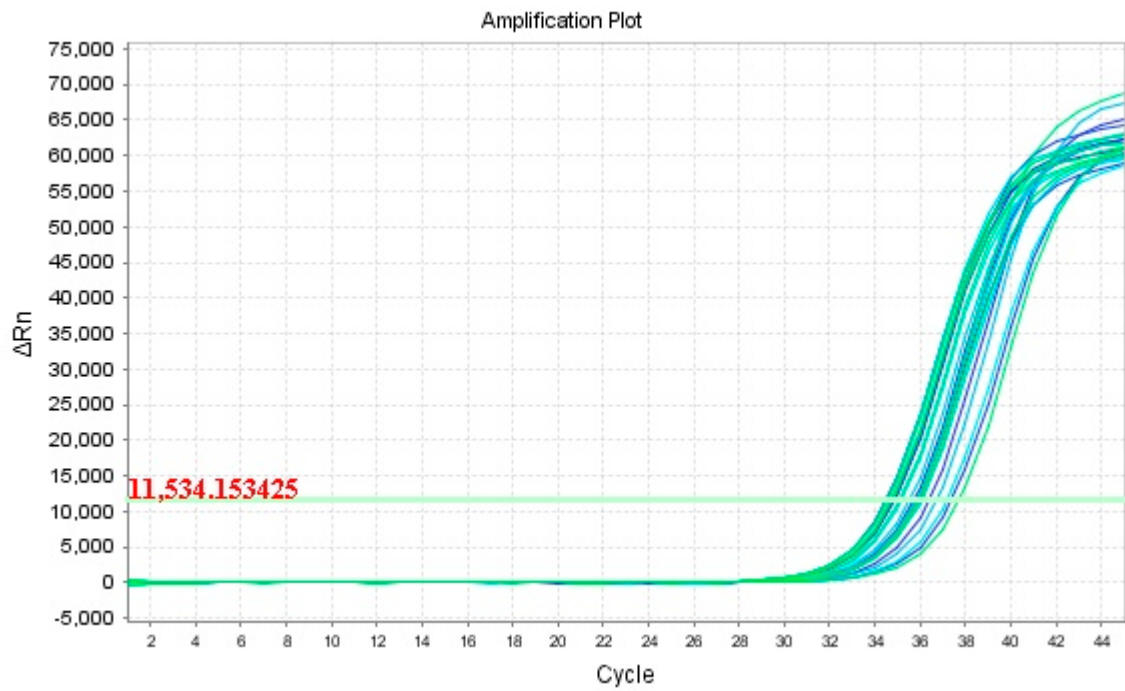
PPAR $\gamma$ : Amplification curve



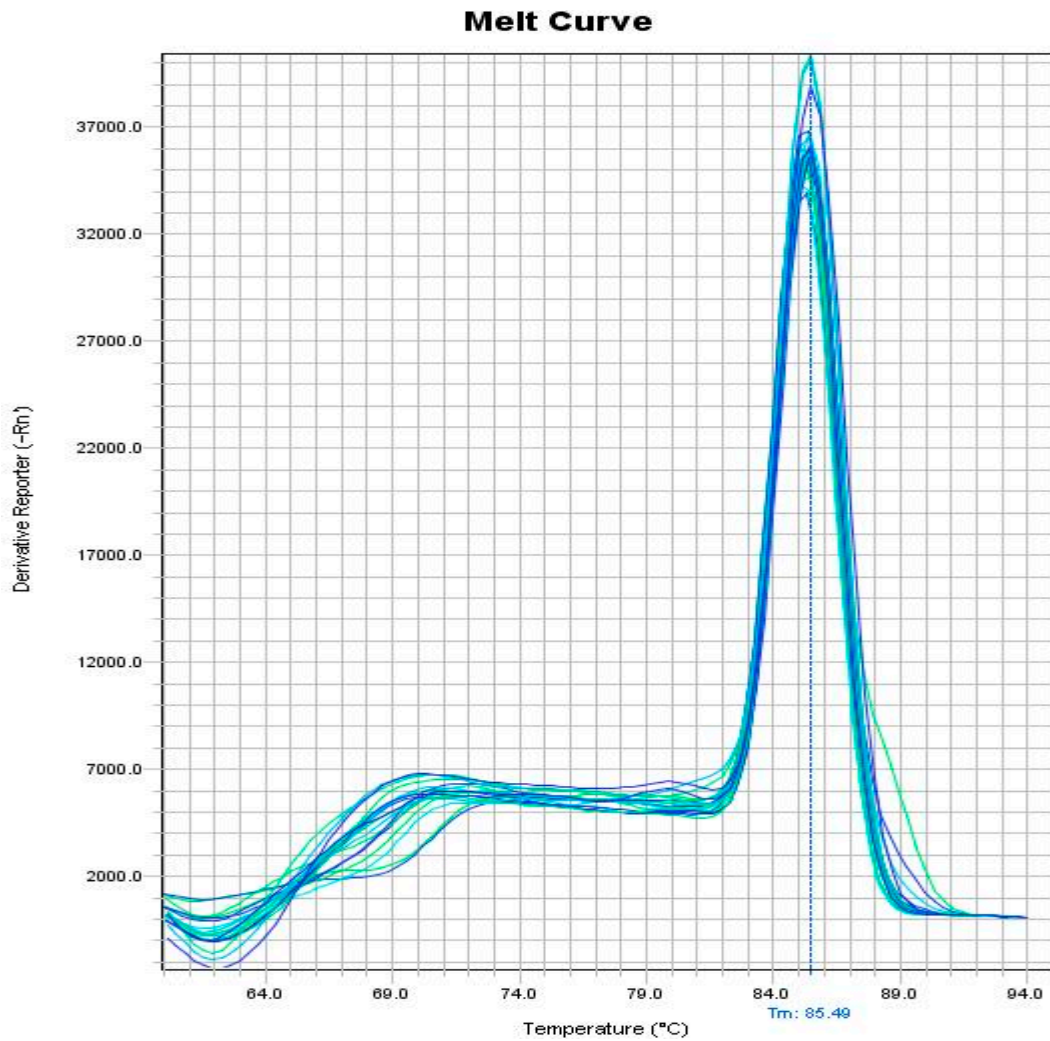
Dissolution curve



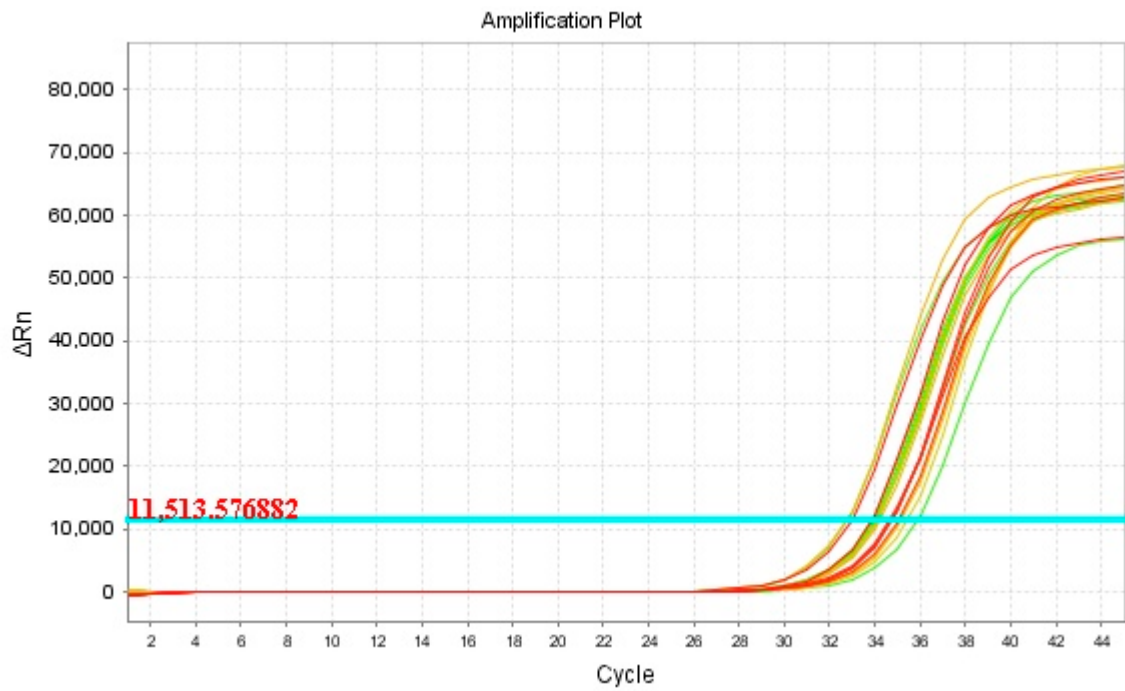
C/EBP $\alpha$ : Amplification curve



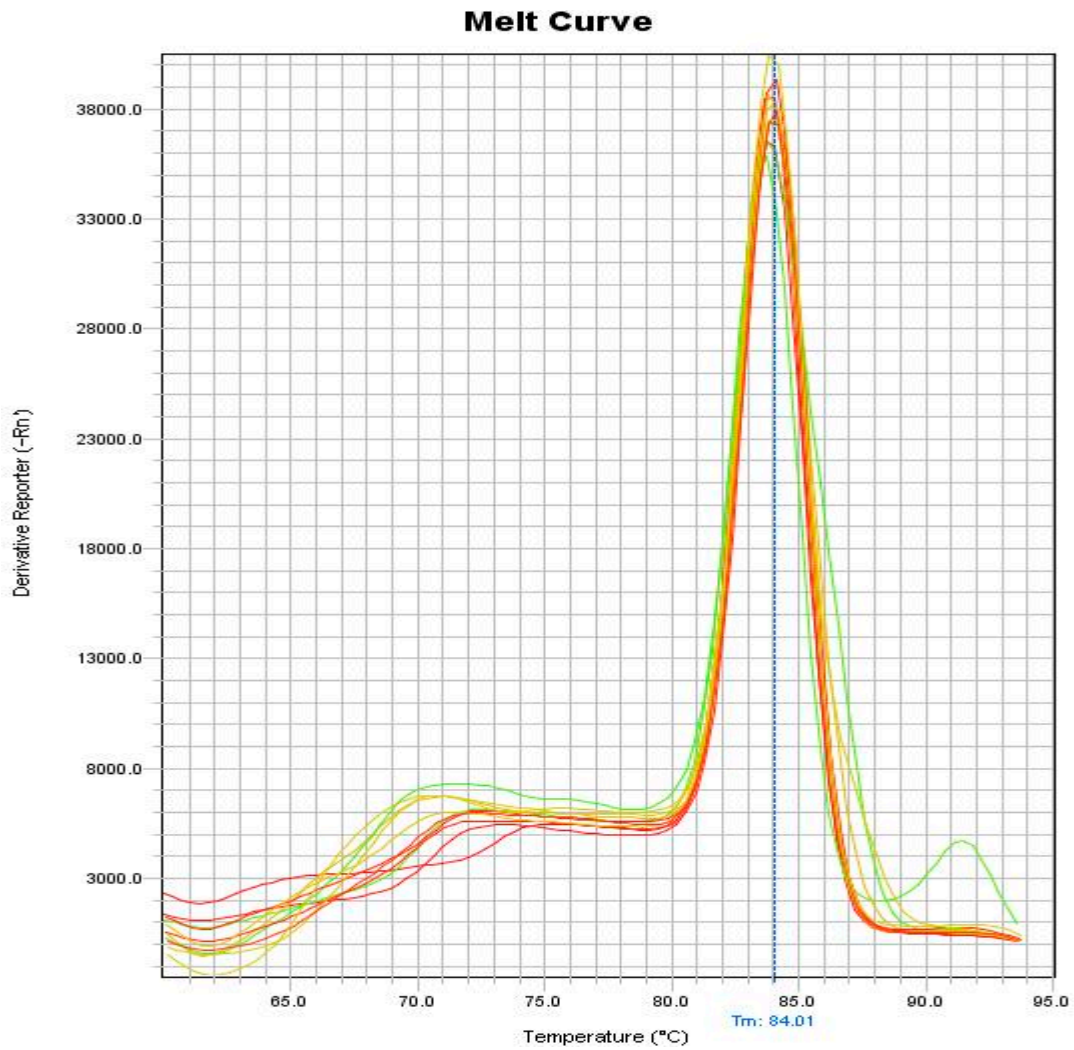
Dissolution curve



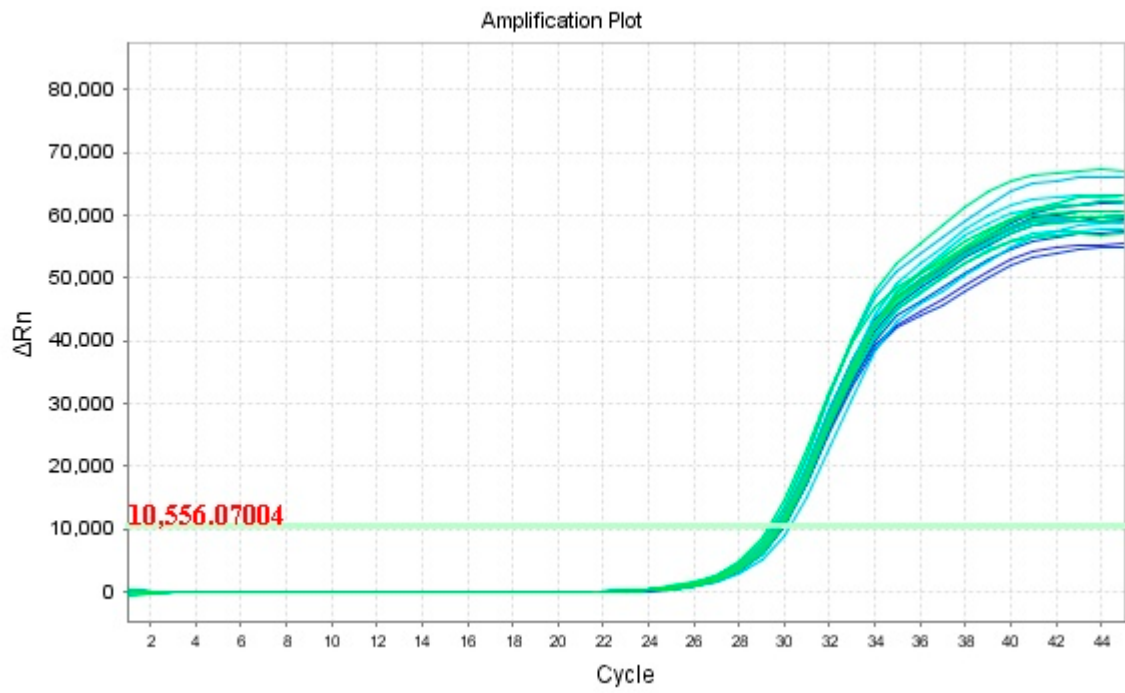
C/EBP $\beta$ : Amplification curve



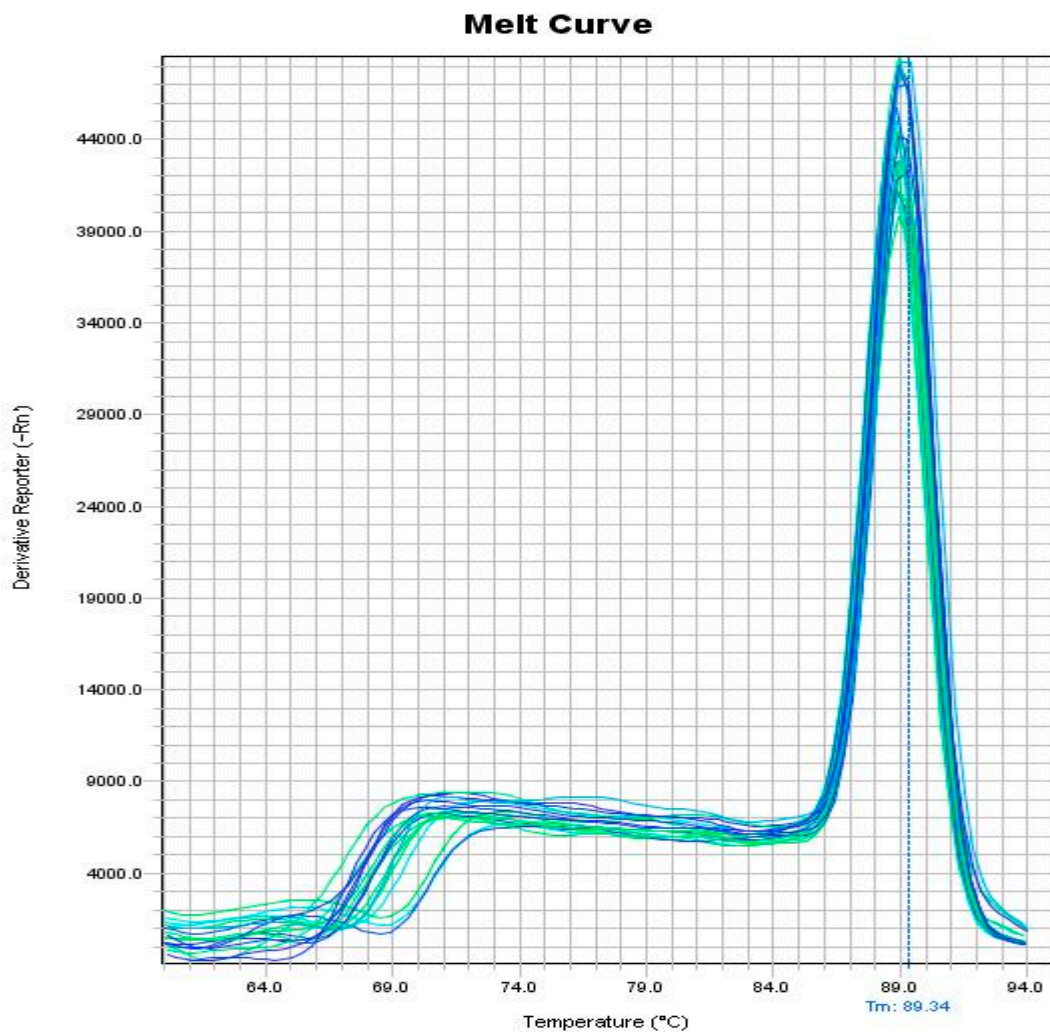
Dissolution curve



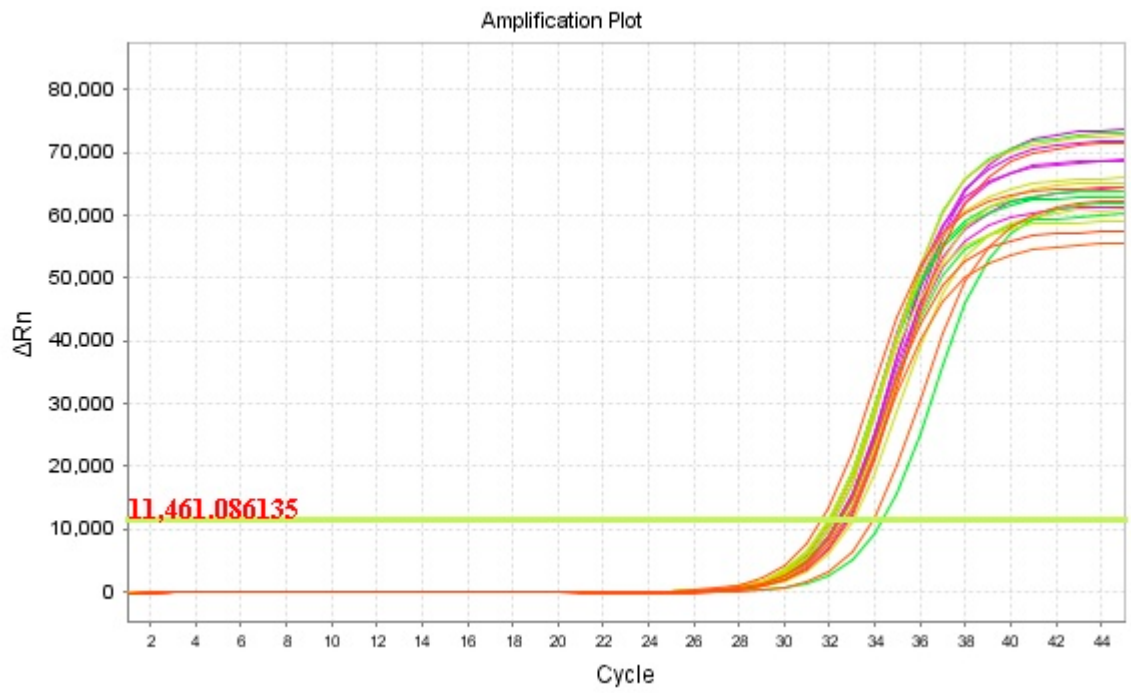
C/EBP $\delta$ : Amplification curve



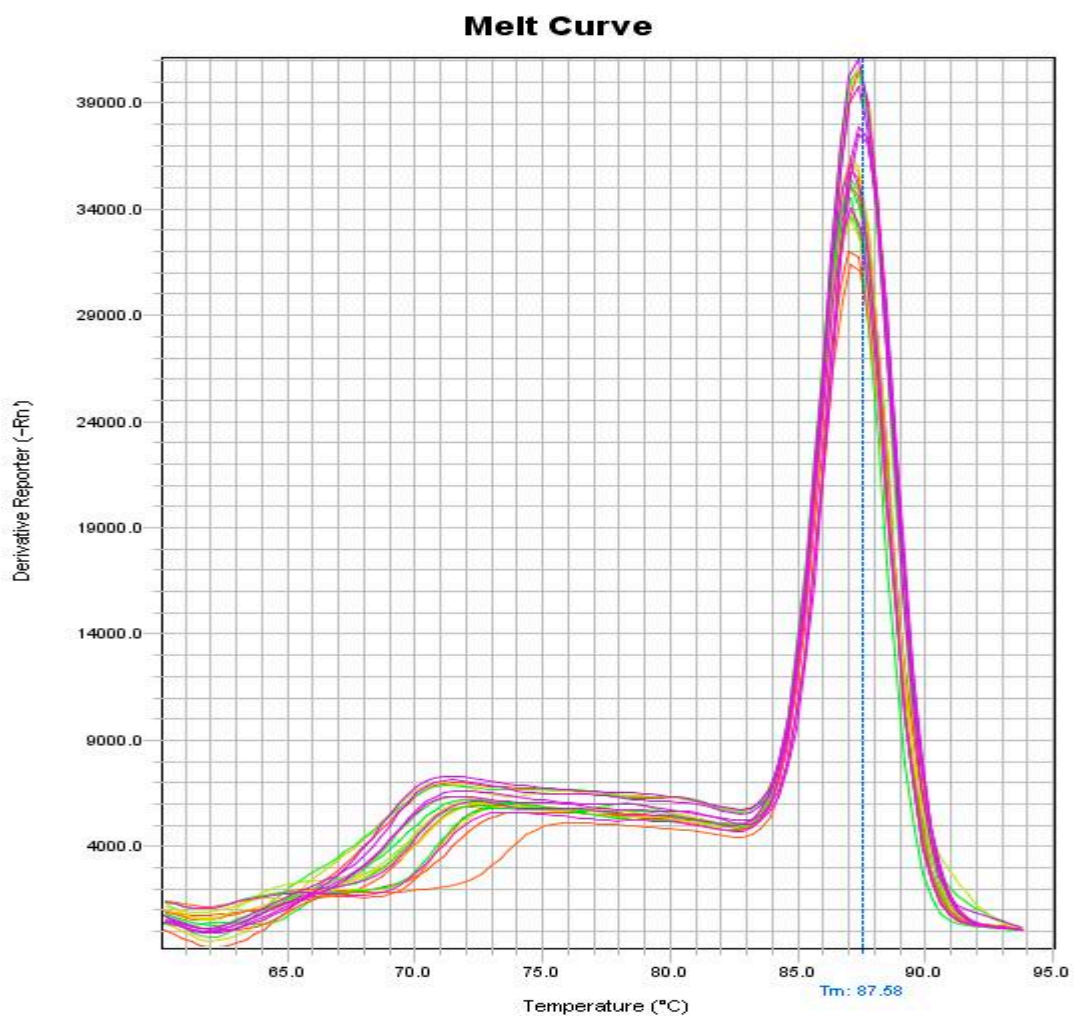
Dissolution curve



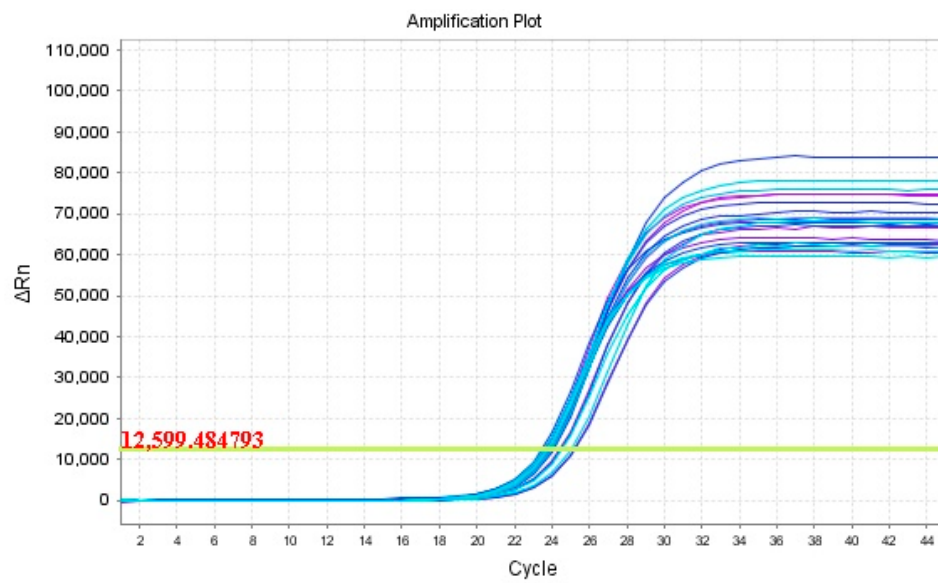
### SREBP1c: Amplification curve



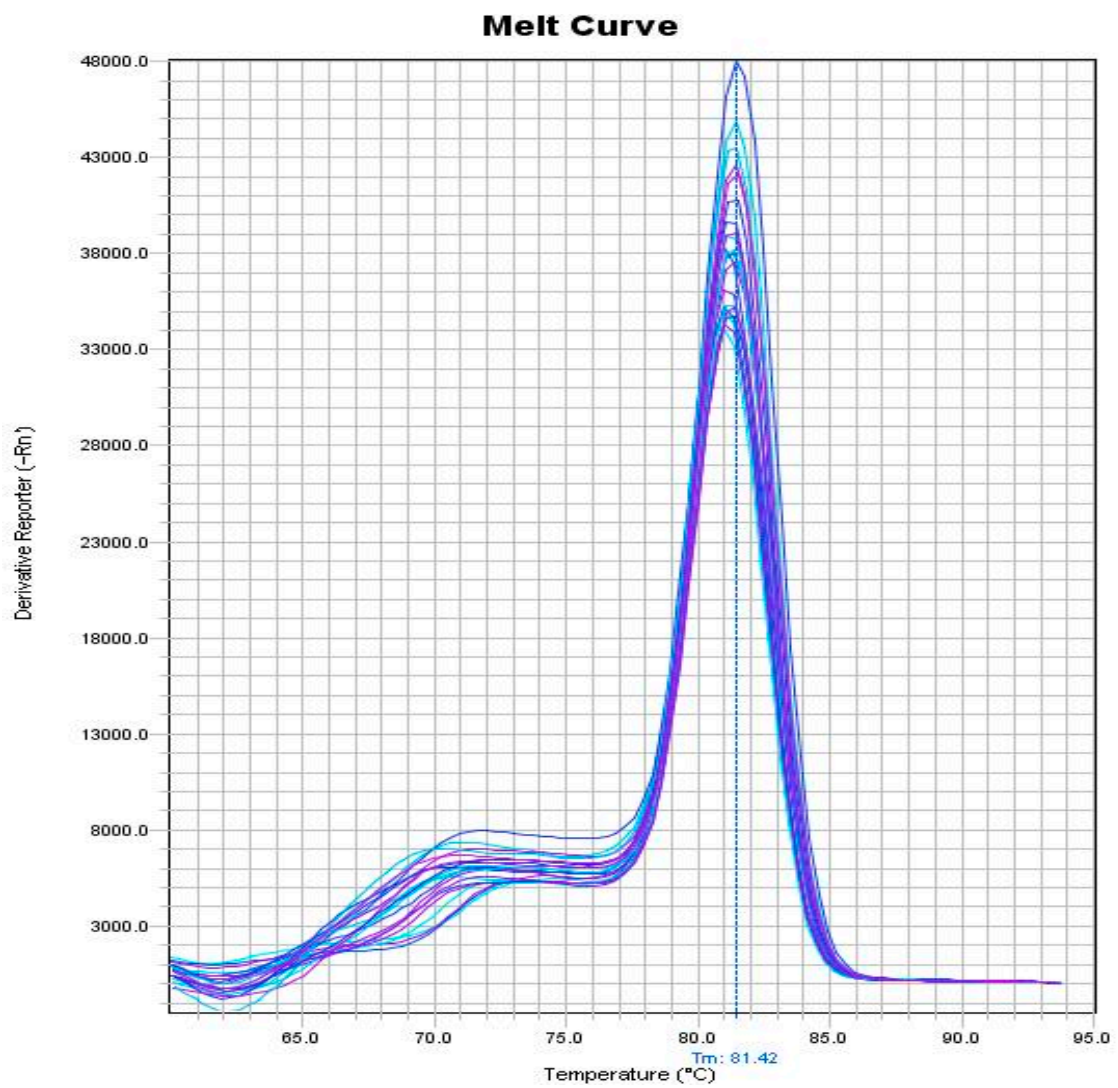
### Dissolution curve



## AP2: Amplification curve



## Dissolution curve



**Figure S2.** Amplification curve and Dissolution curve of  $\beta$ -actin, PPAR $\gamma$ , C/EBP $\alpha$ , C/EBP $\beta$ ,



C/EBP $\delta$ , SREBP1C, AP2.