

Supplementary Figures

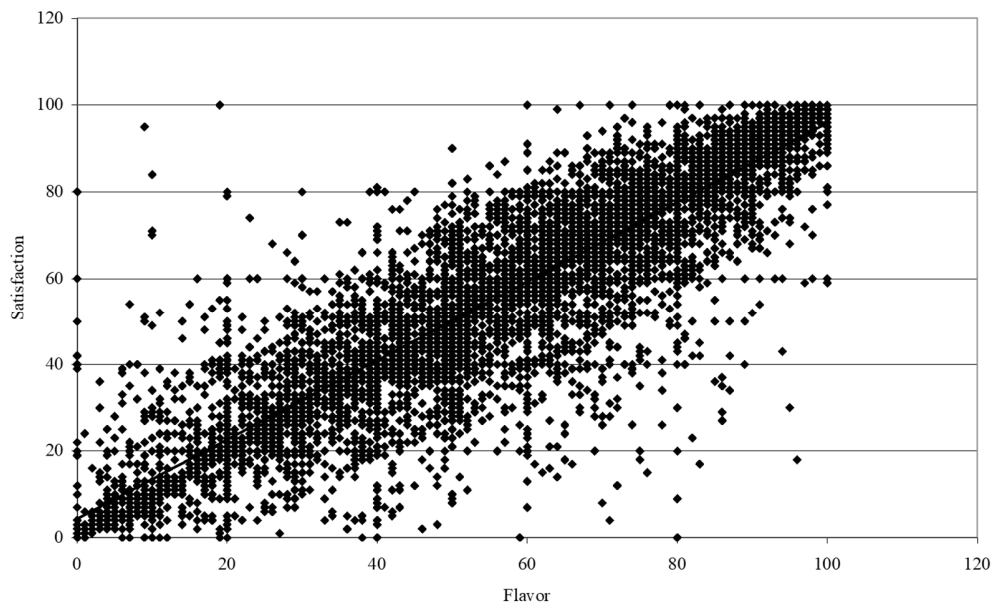


Figure S1. Scatter plot illustrating the relationship between raw flavor data plotted against satisfaction. 0 = dislike flavor/overall extremely; 100 = like flavor/overall extremely.

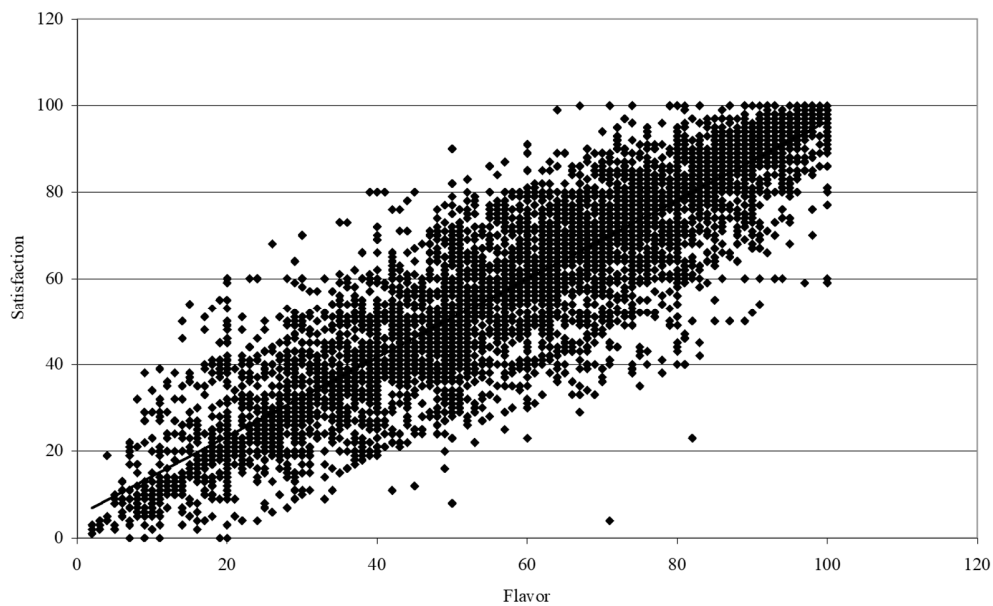


Figure S2. Scatter plot illustrating the relationship between flavor data cleaned with Cook's Distance method plotted against satisfaction. 0 = dislike flavor/overall extremely; 100 = like flavor/overall extremely.

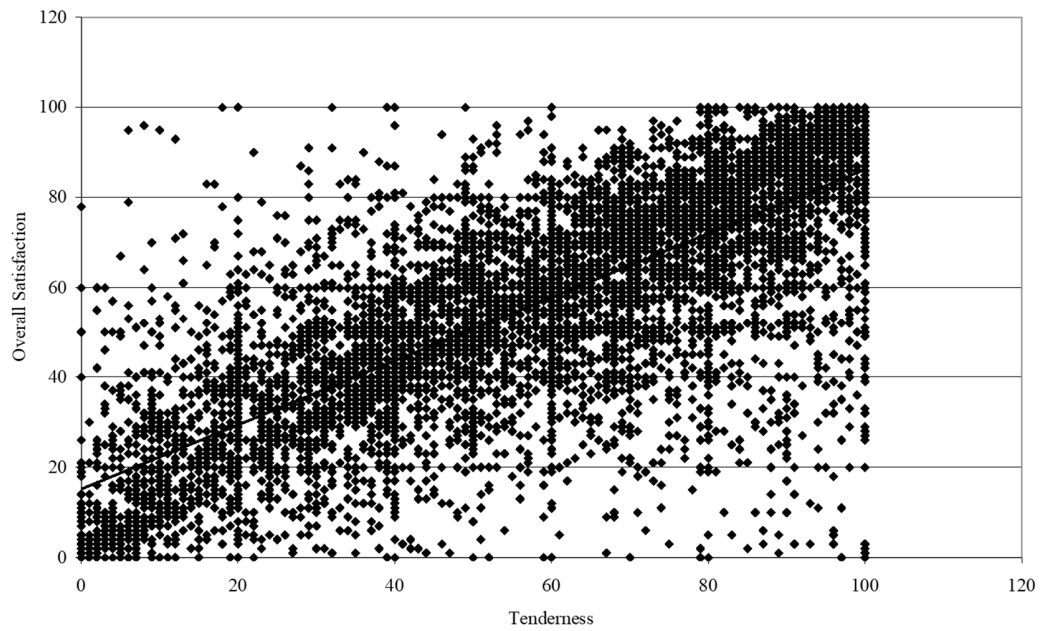


Figure S3. Scatter plot illustrating the relationship between raw tenderness data plotted against satisfaction. 0 = dislike flavor/overall extremely; 100 = like flavor/overall extremely.

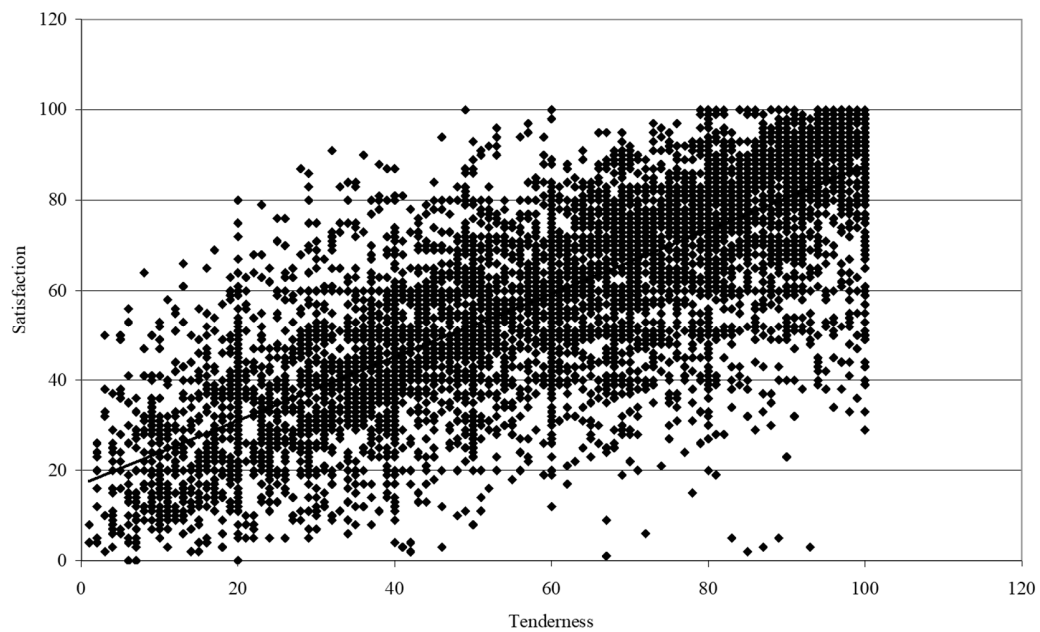


Figure S4. Scatter plot illustrating the relationship between tenderness data cleaned with Cook's Distance method plotted against satisfaction. 0 = dislike flavor/overall extremely; 100 = like flavor/overall extremely.

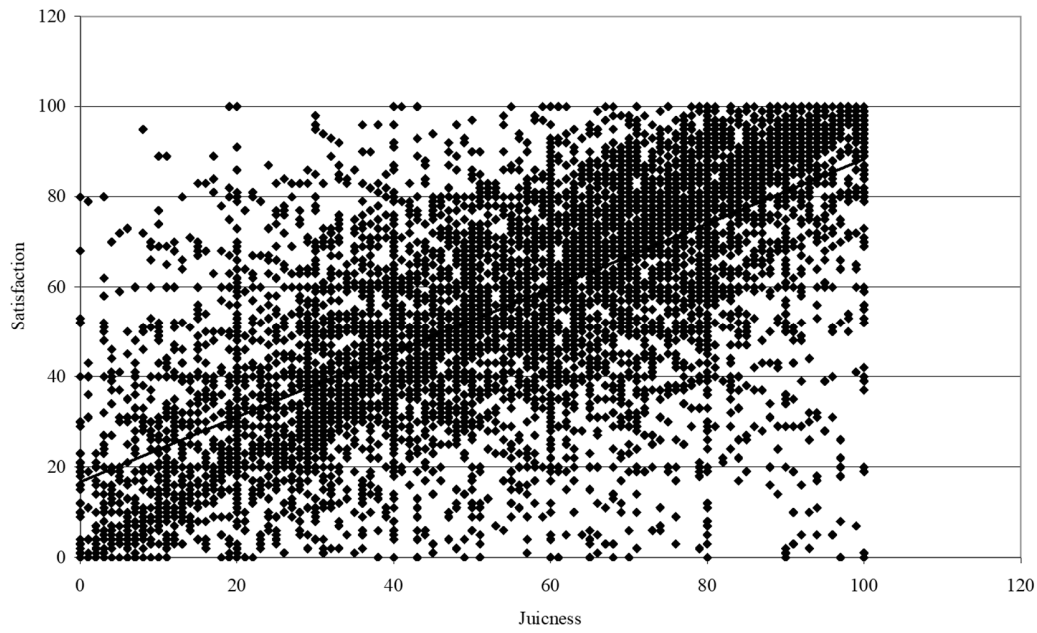


Figure S5. Scatter plot illustrating the relationship between raw juiciness data plotted against satisfaction. 0 = dislike flavor/overall extremely; 100 = like flavor/overall extremely.

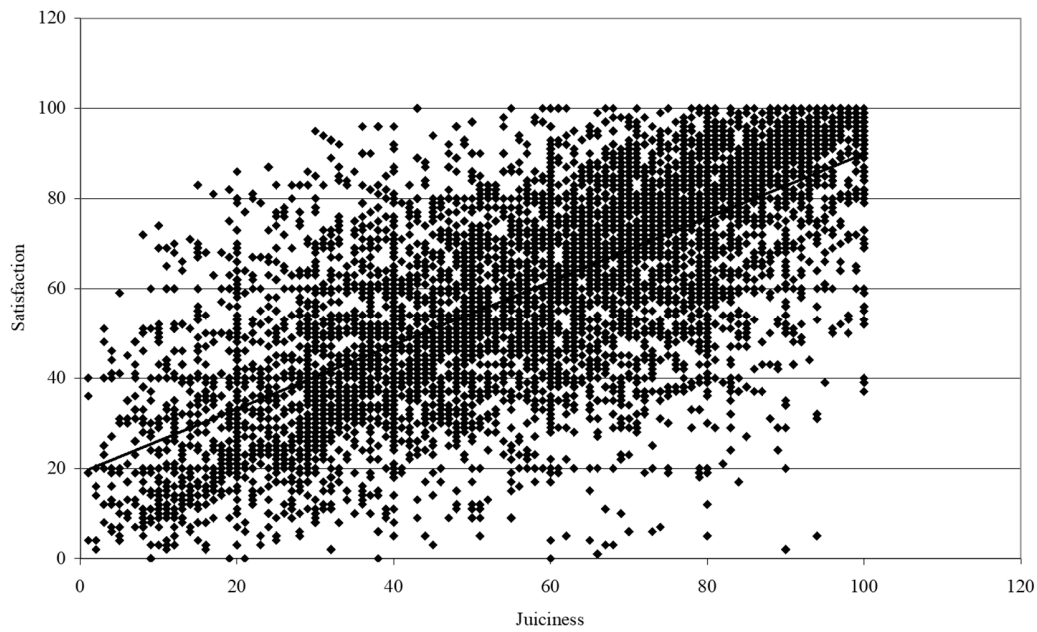


Figure S6. Scatter plot illustrating the relationship between juiciness data cleaned with Cook's Distance method plotted against satisfaction. 0 = dislike flavor/overall extremely; 100 = like flavor/overall extremely.