

# Supplementary Materials: Application of an Ecotoxicological Battery Test to the Paddy Field Soils of the Albufera Natural Park

Oscar Andreu Sánchez, Jesús Moratalla López, José Antonio Rodríguez Martín and Luis Roca Pérez

**Table S1.** Growth rate inhibitory effect (I%).

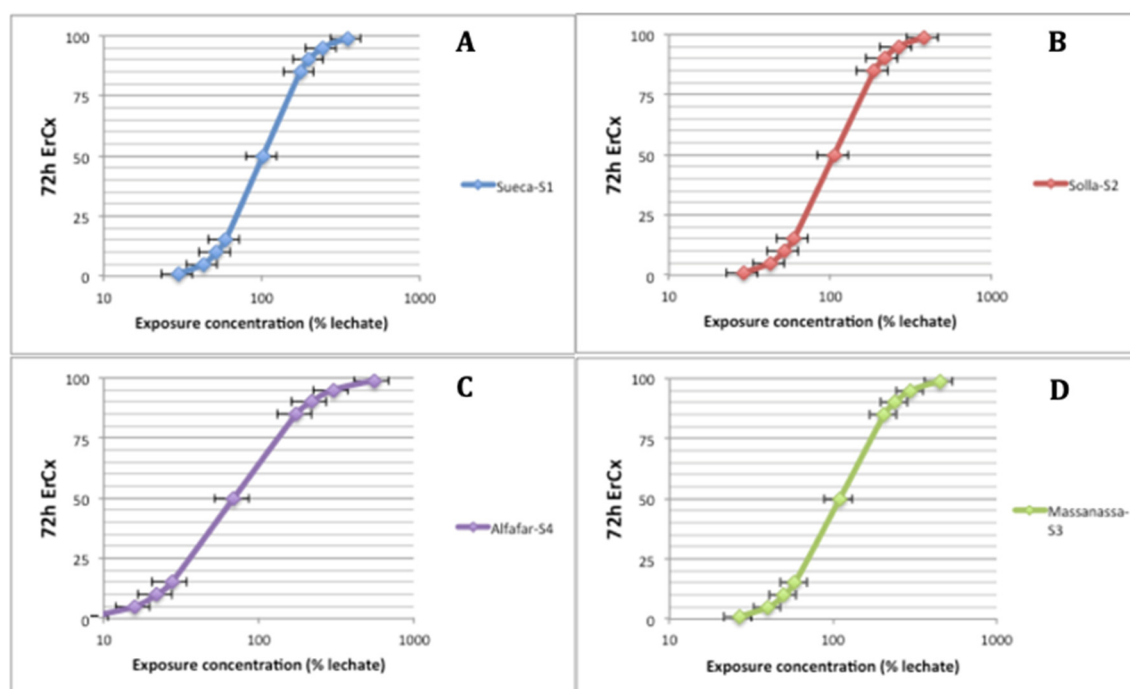
Sample Sites	Exposure Concentration (% of leachate)				
	3.12%	6.25%	12.5%	25%	50%
S1	-0.0134	-0.0039	0.0032	0.0041	0.0890
S2	-0.0119	-0.0053	0.0073	0.0052	0.0903
S3	-0.0140	-0.0046	0.0093	0.0081	0.0981
S4	-0.0012	-0.0100	0.0210	0.1210	0.3732

Negative values denote growth stimulation.

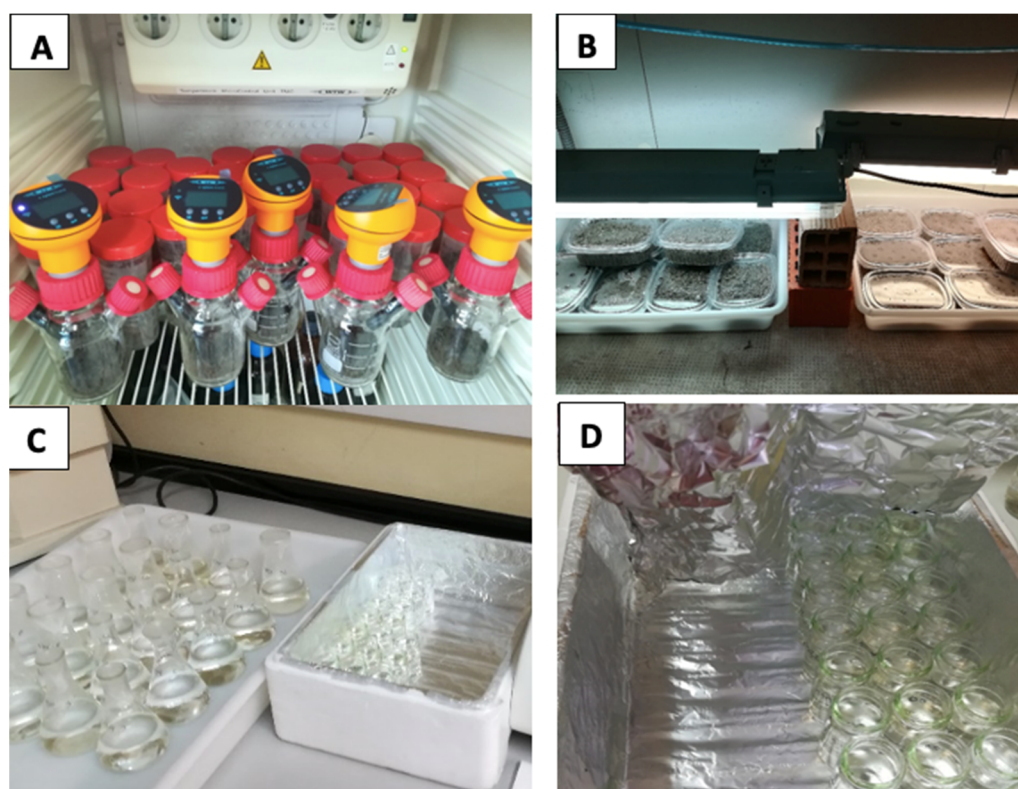
**Table S2.** Probit curve fitting values.

Data	Sample Sites			
	S1	S2	S3	S4
<b>Intercept</b>				
Value	-3.7632	-3.3845	-2.73038	0.26296
Std. Err.	0.96018	0.87548	0.7201	0.5620
C.I.(95%)	-5.64522 / -1.88129	-5.1005 / -1.66862	-4.14179 / 1.318964	-0.8385 / 1.3645
<b>Slope</b>				
Value	4.3654	0.875483	3.79016	2.5771
Std. Err.	0.5745	0.52537	0.434970	0.3711
C.I.(95%)	3.2393 / 5.4916	3.1167 / 5.1761	2.9376 / 4.6427	1.8497 / 3.3044

Std. Err: Standard Error. CI95%: Confidence Intervals ( 95%).



**Figure S1.** Probit regression curves for the *R. subcapitata* assay. X-axis: exposure concentration expressed as % of leachate. Y-axis: 72h ErCx. Error bars denote the interval of confidence (95%). Sample sites: A) S1, B) S2, C) S3 and D) S4.



**Figure S2.** Experimental photography. (A) Respirirometry bottles with Oxitop™ system for carbon fixation assay (OECD TG 216). (B) Plastic containers for the earthworms mortality assay (OECD TG 207). (C) Erlenmeyer flasks with different contraptions of leachate inoculated with *R. subcapitata* (OECD TG 201). (D) Trays with rinsing vials for *D. magna* assay (OECD TG 202).