

The Role of Autophagy in Copper–Induced Apoptosis and Developmental Neurotoxicity in SH–SY5Y Cells

Lu Lu¹, Ying Zhang¹, Wei Shi¹, Qian Zhou¹, Zhuoqi Lai¹, Yuepu Pu¹, Lihong Yin¹ *

¹ Key Laboratory of Environmental Medicine Engineering, Ministry of Education, School of Public Health, Southeast University, Nanjing, 210009, China

E-mails: 230229018@seu.edu.cn (L.L.); 101300315@seu.edu.cn (Z.Y.);

230239085@seu.edu.cn (S.W.); 230229470@seu.edu.cn (Z.Q.); 220223707@seu.edu.cn (L.Z.);

yppu@seu.edu.cn (Y.P.);

*Corresponding author: Lihong Yin;

87 Dingjiaqiao Street, Nanjing 210009, China

Tel.: +86-025-8327-2583;

Fax.: +86-025-8327-2583;

Email: lhyin@seu.edu.cn (L.Y.)

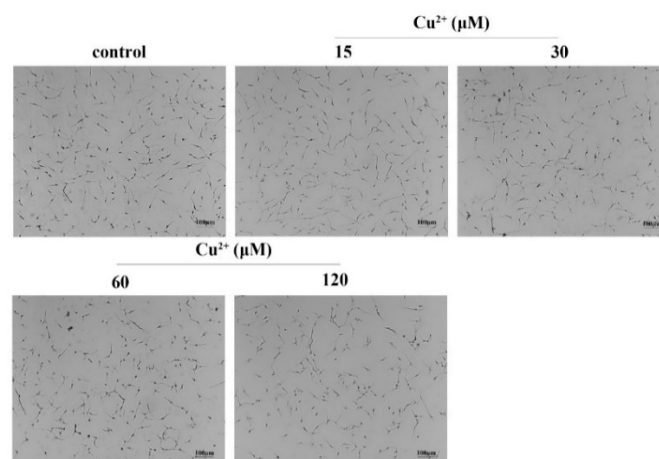


Figure S1. The differentiated SH-SY5Y cells morphology after Cu^{2+} exposure for 48 h (scale bar = 100 μm).

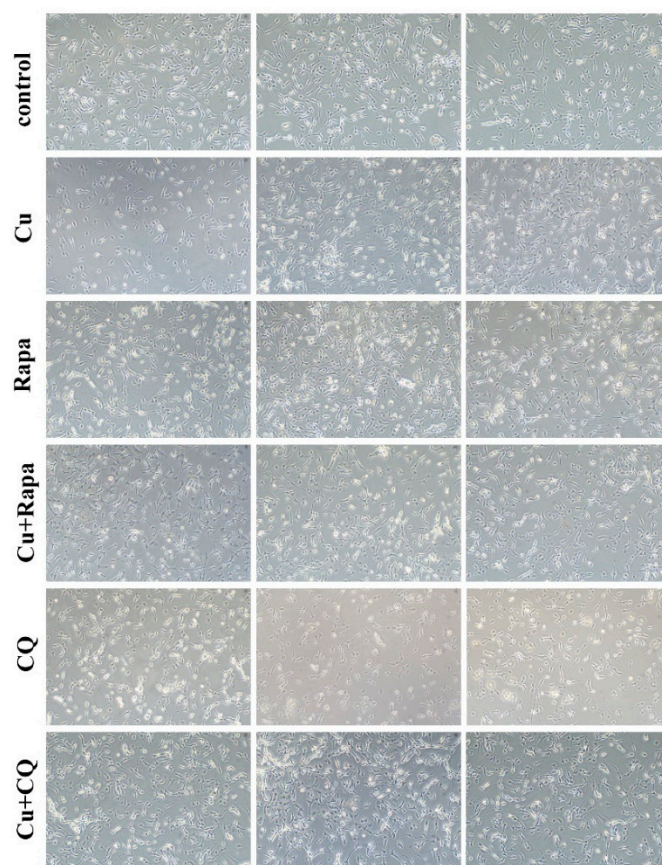


Figure S2. The differentiated SH-SY5Y cells morphology after Rapa and CQ pretreatment in conjunction with or apart from 120 μM Cu^{2+} . (scale bar = 100 μm).