

Supplementary Materials: An Embryonic Zebrafish Model to Screen Disruption of Gut-Vascular Barriers upon Exposure to Ambient Ultrafine Particles

Kyung In Baek, Yi Qian, Chih-Chiang Chang, Ryan O'Donnell, Ehsan Soleimanian, Constantinos Sioutas, Rongsong Li and Tzung K. Hsiai

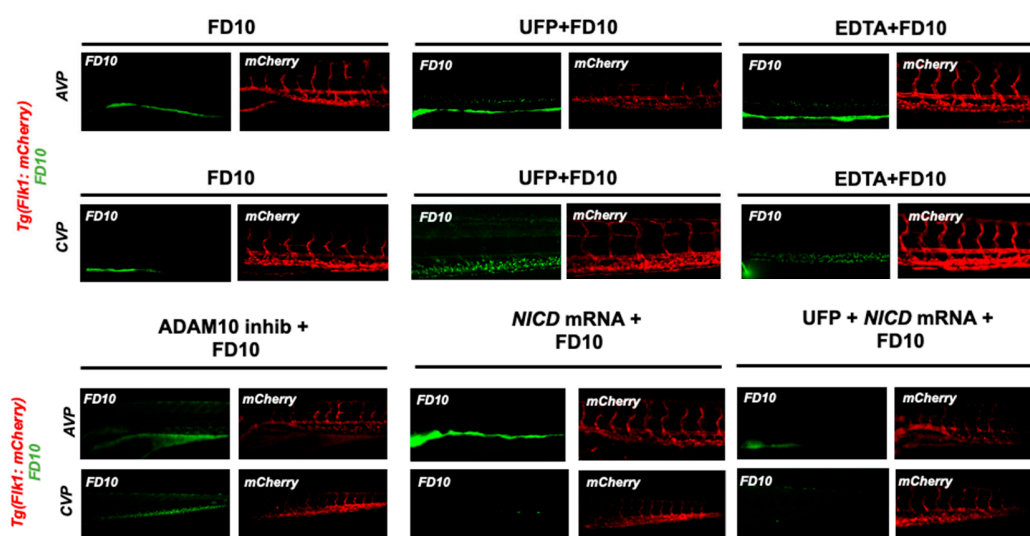


Figure S1. Imaging endoluminal distribution of FD10. Images of FD10 (green) and vascular endothelium (*flk1*⁺, red) were taken respectively in response to UFP, Adam10 inhibitor, and *NICD* mRNA rescue and superimposed to assess vascular endothelial distribution of FD10.