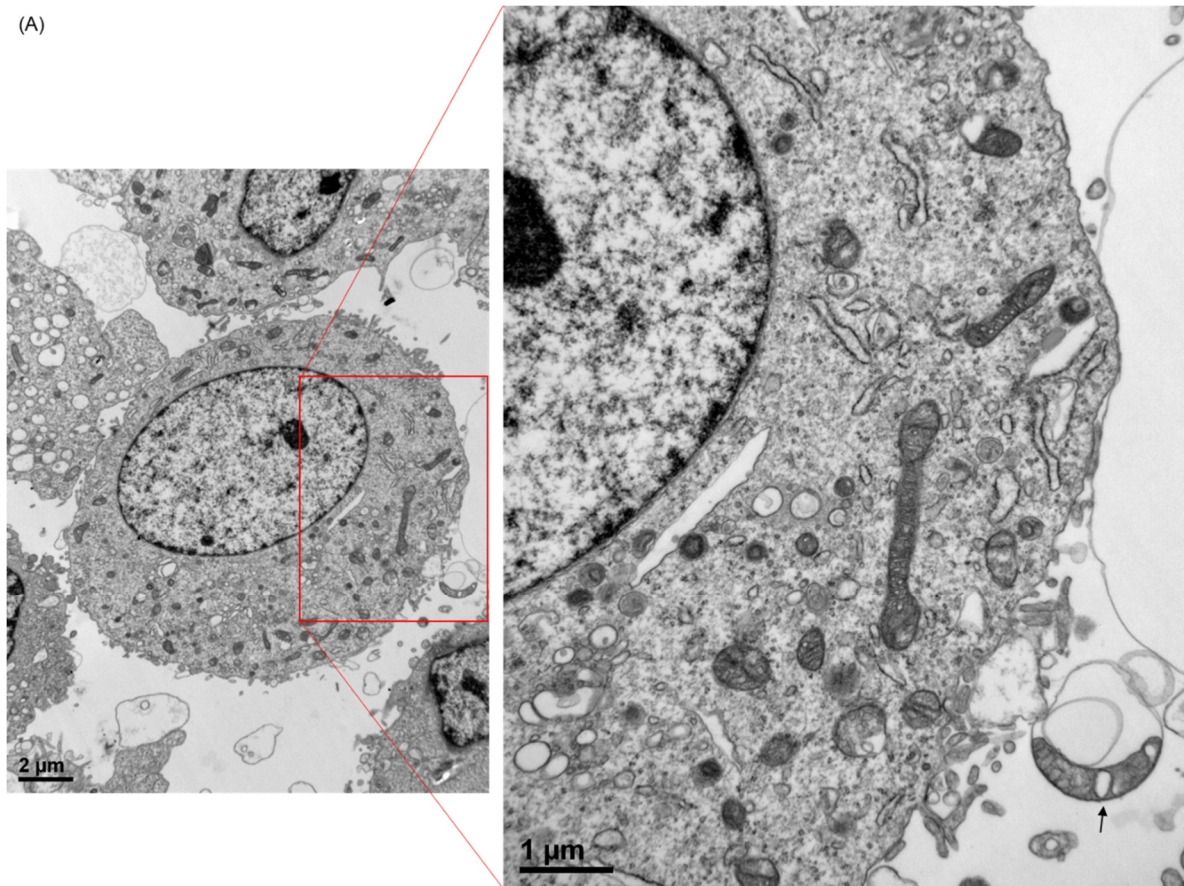


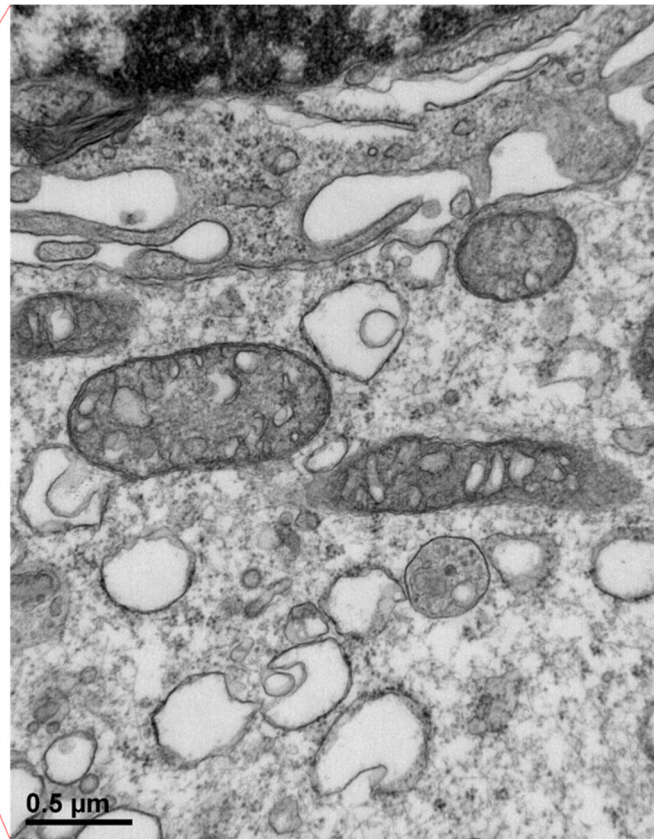
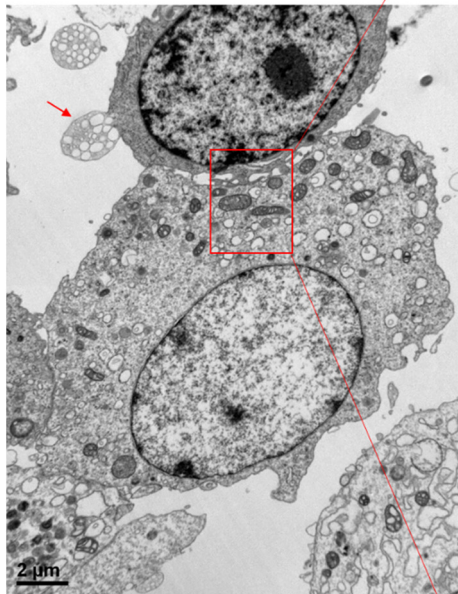
Supplementary Materials: Whole cigarette smoke condensates induced accumulation of amyloid beta precursor protein with oxidative stress in murine astrocytes

Eun-Jung Park, Seung-Woo Jin, Hyun-Ji Lim, Hyeon-Young Kim, Min-Sung Kang, Siyoung Yang

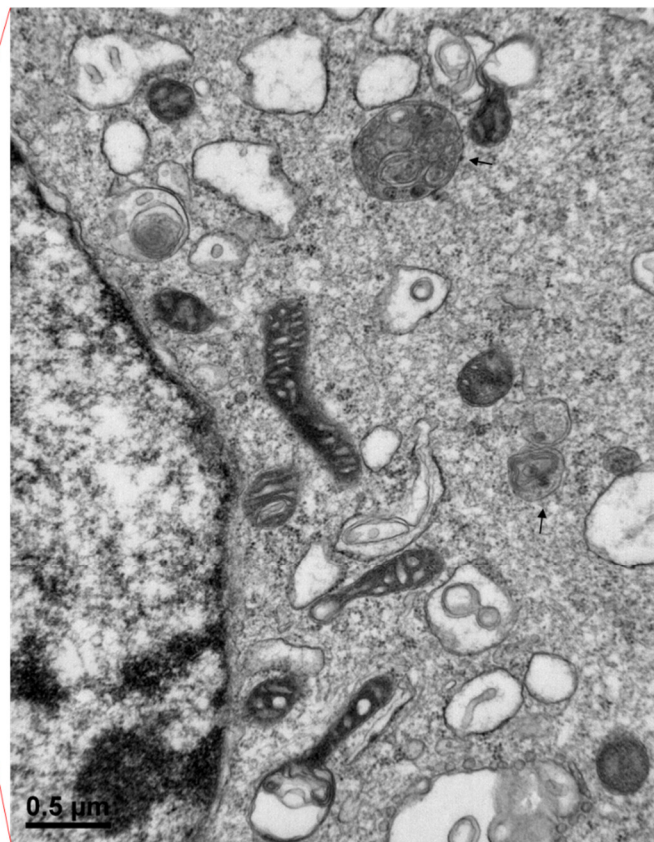
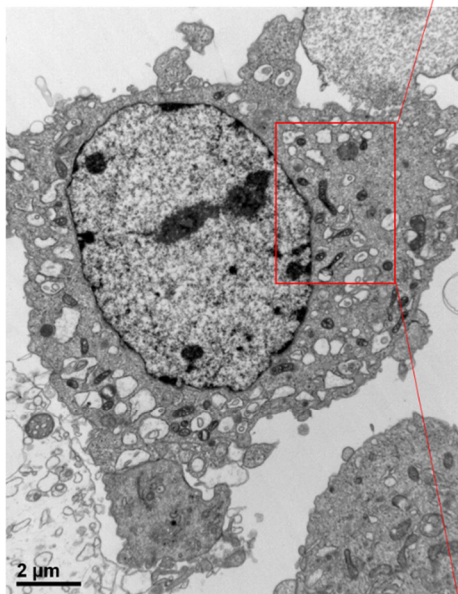
(A)



(B)



(C)



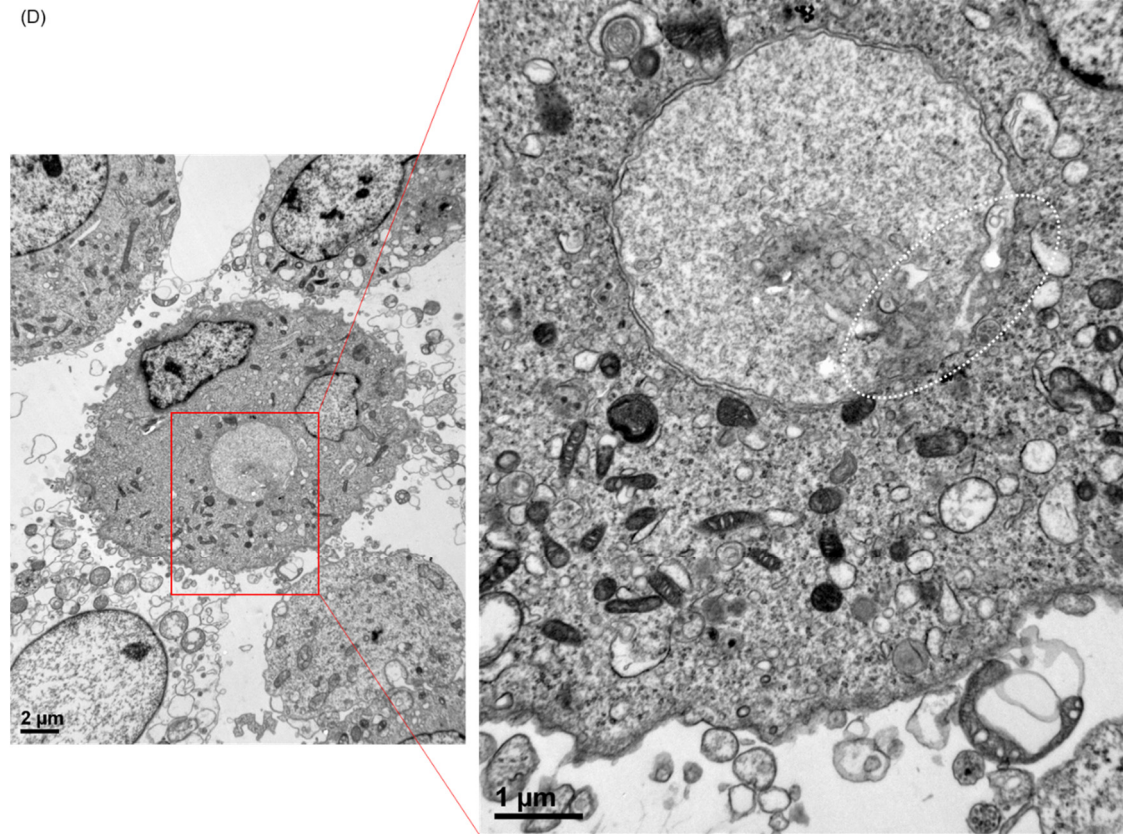


Figure S1. TEM images of cells exposed to 1% WCSC. We could find mitochondria impaired structurally in (A), (B) and (C). In addition, extracellular mitochondria (A, a black arrow), exocytosis of a vacuole containing damaged organelles (B, a red arrow), autolysosom-like vacuoles (C, white arrows), and the nuclear membrane collapse (D, a white dotted line circle) were observed.