

# Supplementary Materials: Accelerated Weathering Increases the Release of Toxic Leachates from Microplastic Particles as Demonstrated through Altered Toxicity to the Green Algae *Raphidocelis subcapitata*

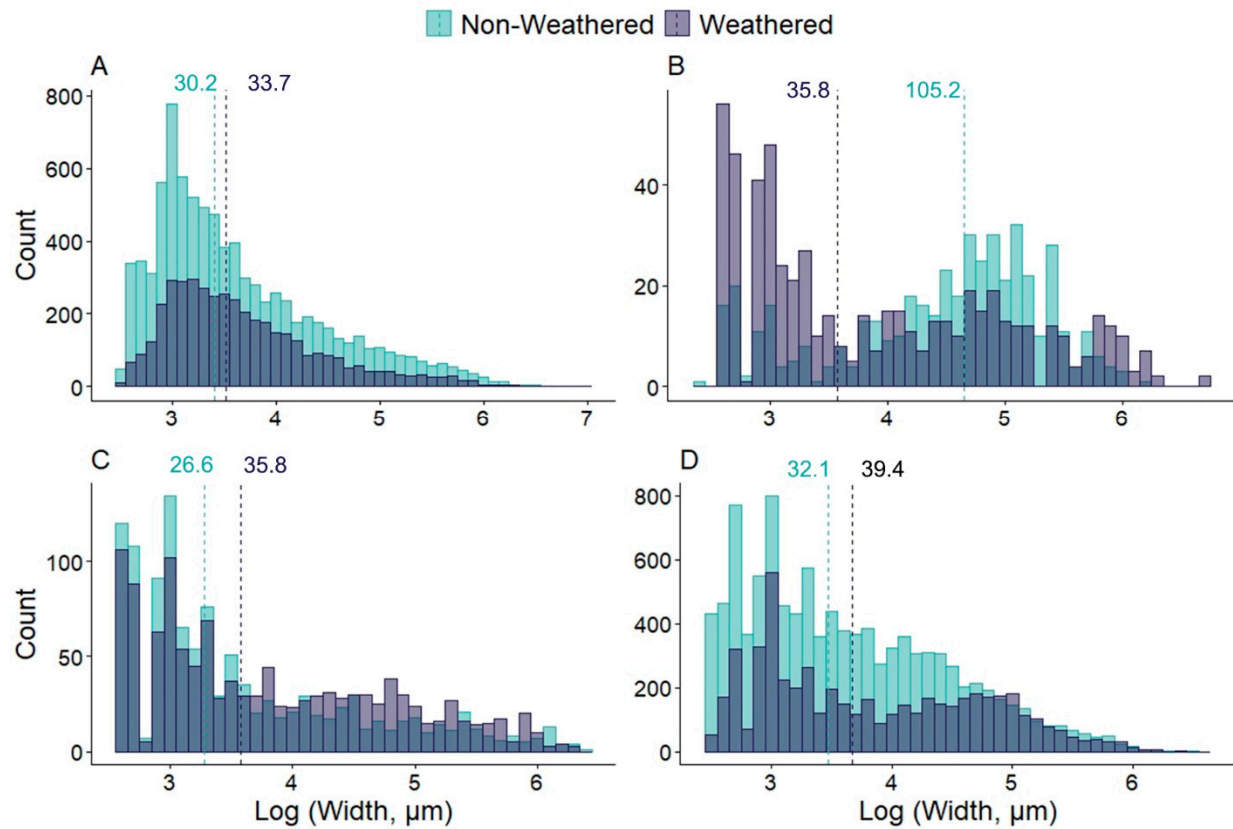
Márta Simon, Nanna B. Hartmann and Jes Vollertsen

**Table S1.** Composition of the algae growth medium.

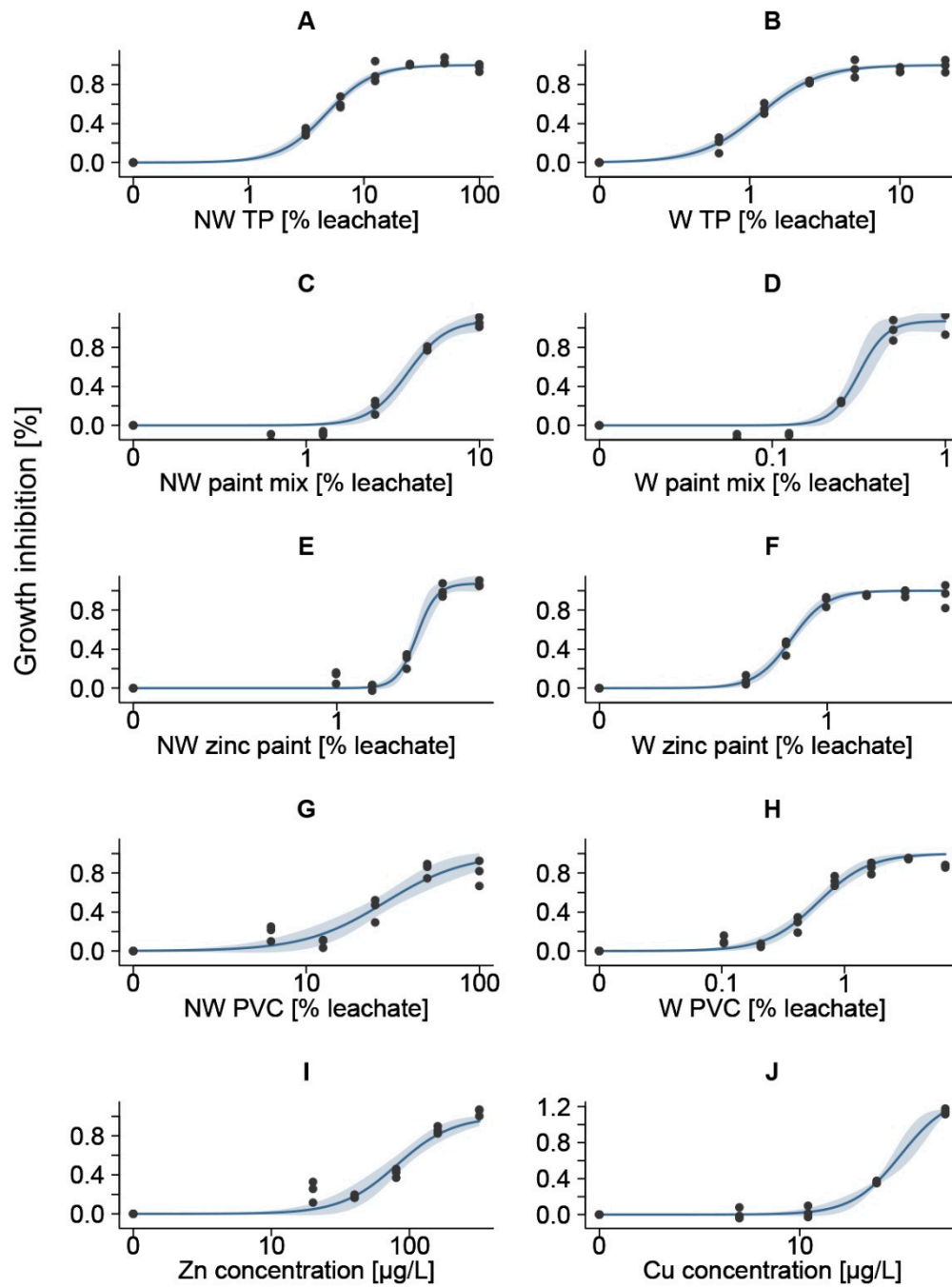
NH <sub>4</sub> Cl	15	mg/L
MgCl <sub>2</sub> .6 H <sub>2</sub> O	12	mg/L
CaCl <sub>2</sub> .7 H <sub>2</sub> O	18	mg/L
MgSO <sub>4</sub> .7 H <sub>2</sub> O	15	mg/L
KH <sub>2</sub> PO <sub>4</sub>	1.6	mg/L
FeCl <sub>3</sub> .6 H <sub>2</sub> O	64	µg/L
Na <sub>2</sub> EDTA	100	µg/L
H <sub>3</sub> BO <sub>4</sub>	185	µg/L
MnCl <sub>2</sub> .4 H <sub>2</sub> O	415	µg/L
ZnCl <sub>2</sub>	3	µg/L
CoCl <sub>2</sub> .6 H <sub>2</sub> O	1.5	µg/L
CuCl <sub>2</sub> .2 H <sub>2</sub> O	0.1	µg/L
Na <sub>2</sub> MoO <sub>4</sub> .2 H <sub>2</sub> O	7	µg/L
NaHCO <sub>3</sub>	50	mg/L

**Table S2.** Growth rates of blank samples. The growth medium was agitated at 20 °C for 72 hours. Afterwards, the samples were filtered through a 0.45 µm syringe filter and kept frozen at −20 °C for a couple of days, prior to the growth inhibition tests.

Sample		Growth rate
Blank 1	1	1.17
	2	1.15
	3	1.15
Blank 2	1	1.22
	2	1.38
	3	1.32
Blank 3	1	1.26
	2	1.32
	3	1.31



**Figure S1.** Distribution of the width of non-weathered and weathered paint mix (A), zinc paint (B), tire (C) and PVC (D) microparticles applied in the growth inhibition tests. The size of the bins was 0.1 on a logarithmic scale. The width is defined as the minimum Feret diameter, and the median values in micrometre are denoted.



**Figure S2.** Log-logistic concentration-response profiles of particle leachates, including 95% confidence interval.