

Supplementary Materials: Antifungal and Anticancer Potential of *Argemone mexicana* L.

Nilesh V. More and Arun S. Kharat



Figure S1. Antifungal activity of *A. mexicana* leaves methanolic extract: (A) Antifungal activity of leaves against *Aspergillus flavus*; (B) *Aspergillus niger*; (C) *Penicillium notatum*; (D) *Mucor indicus*.

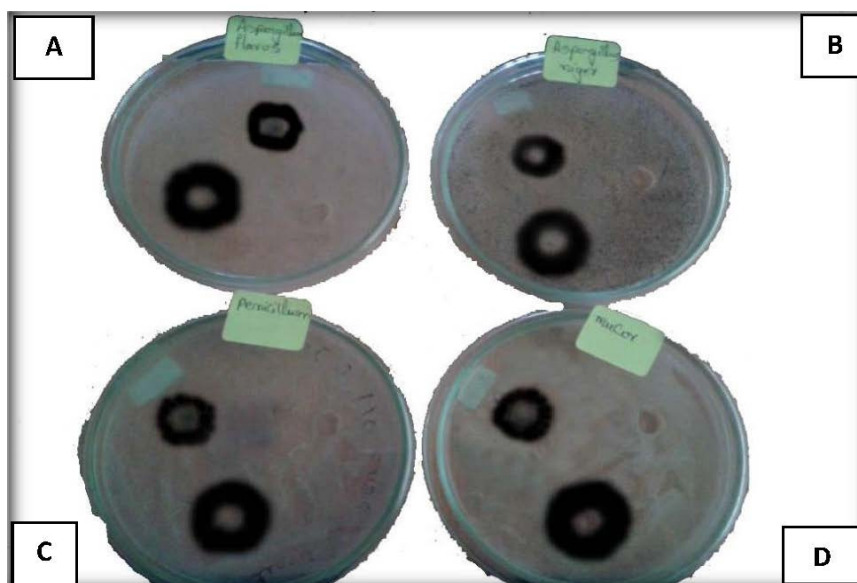
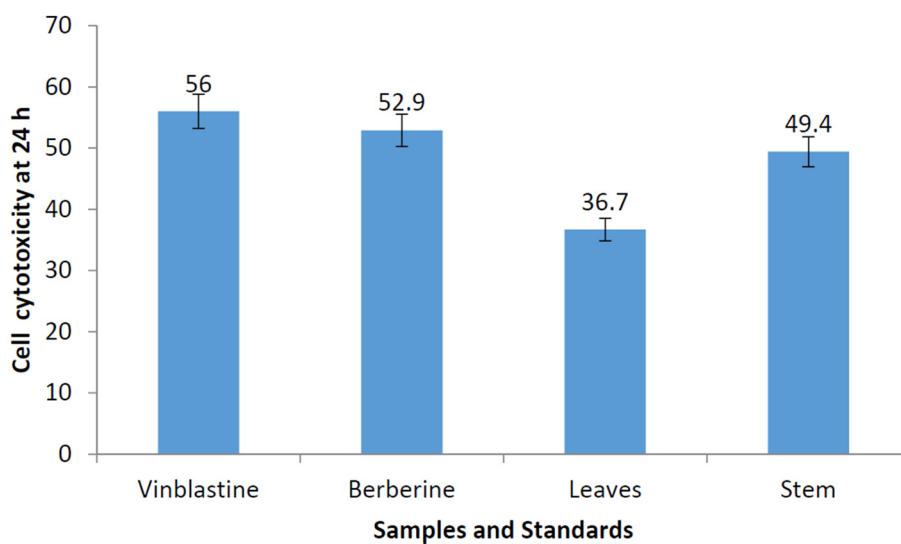
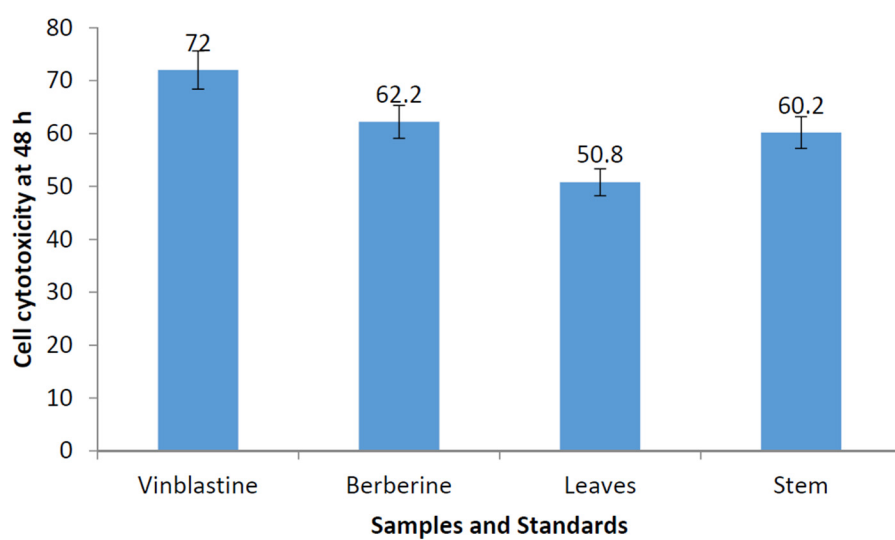


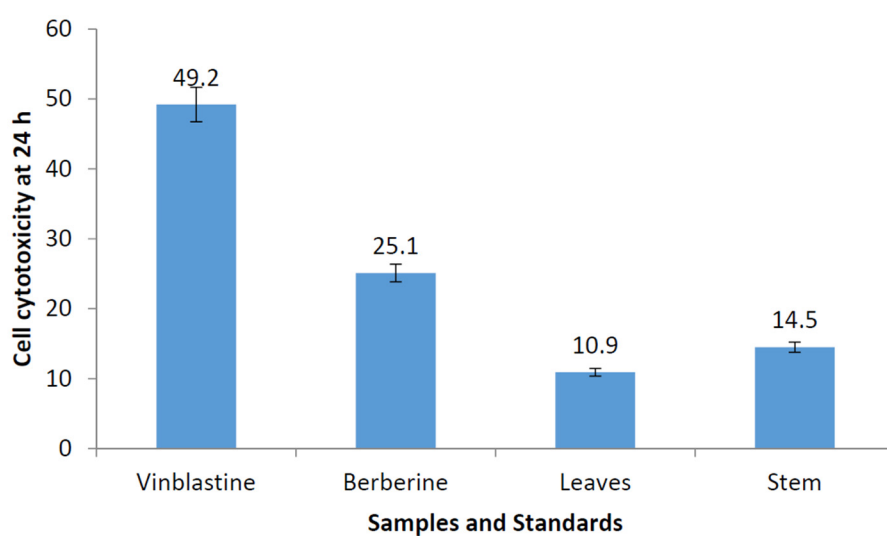
Figure S2. Antifungal activity of *A. mexicana* stem methanolic extract: (A) Antifungal activity of stem against *Aspergillus flavus*; (B) *Aspergillus niger*; (C) *Penicillium notatum*; (D) *Mucor indicus*.



(A)

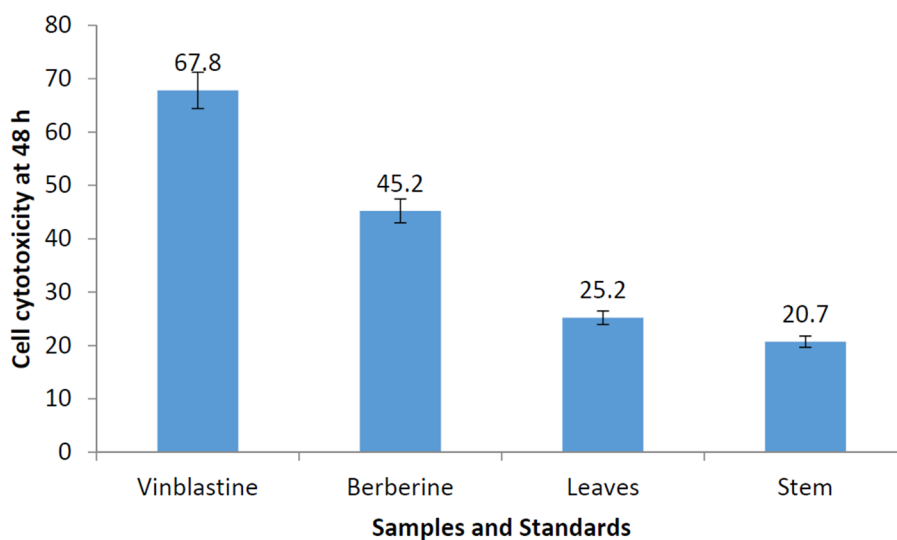


(B)

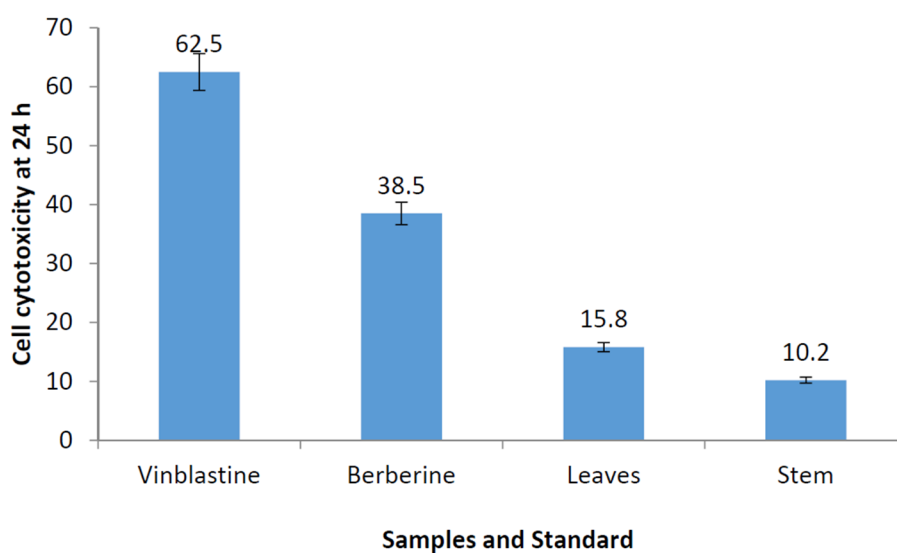


(C)

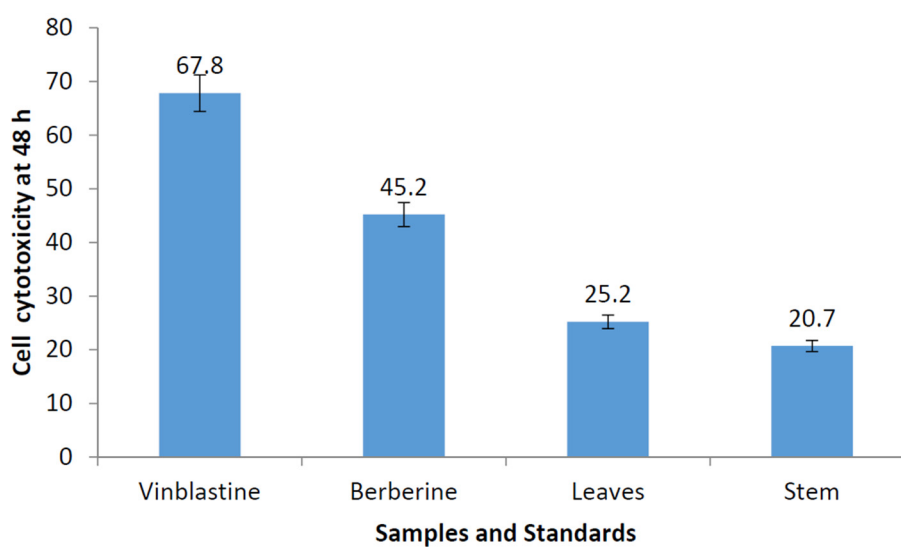
Figure S3. Cont.



(D)



(E)



(F)

Figure S3. (A) Anticancer potentiality of *A. mexicana*: Trypan blue exclusion assay with the use of Vinblastine (24.5 nM), Pure berberine (300 µg), leaves extract (300 µg) and stem extract (300 µg) of *A. mexicana* at 24 h on human lung carcinoma cell line -A549. The histogram indicates % cytotoxicity exhibited by the standard and samples. Data presented is an average of three experiments, the bars on histogram denotes standard deviation; (B) Anticancer potentiality of *A. mexicana*: Trypan blue exclusion assay with the use of Vinblastine (24.5 nM), Pure berberine (300 µg), leaves extract (300 µg) and stem extract (300 µg) of *A. mexicana* at 48 h on human lung carcinoma cell line -A549. The histogram indicates % cytotoxicity exhibited by the standard and samples. Data presented is an average of three experiments, the bars on histogram denotes standard deviation; (C): Anticancer potentiality of *A. mexicana*: Trypan blue exclusion assay with the use of Vinblastine (24.5 nM), Pure berberine (300 µg), leaves extract (300 µg) and stem extract (300 µg) of *A. mexicana* at 24 h on Cervical cancer cell line -SiHa. The histogram indicates % cytotoxicity exhibited by the standard and samples. Data presented is an average of three experiments, the bars on histogram denotes standard deviation; (D) Anticancer potentiality of *A. mexicana*: Trypan blue exclusion assay with the use of Vinblastine (24.5 nM), Pure berberine (300 µg), leaves extract (300 µg) and stem extract (300 µg) of *A. mexicana* at 48 h on Cervical cancer cell line -SiHa. The histogram indicates % cytotoxicity exhibited by the standard and samples. Data presented is an average of three experiments, the bars on histogram denotes standard deviation; (E) Anticancer potentiality of *A. mexicana*: Trypan blue exclusion assay with the use of Vinblastine (24.5 nM), Pure berberine (300 µg), leaves extract (300 µg) and stem extract (300 µg) of *A. mexicana* at 24 h on Oral cancer cell line -KB. The histogram indicates % cytotoxicity exhibited by the standard and samples. Data presented is an average of three experiments, the bars on histogram denotes standard deviation; (F) Anticancer potentiality of *A. mexicana*: Trypan blue exclusion assay with the use of Vinblastine (24.5 nM), Pure berberine (300 µg), leaves extract (300 µg) and stem extract (300 µg) of *A. mexicana* at 48 h on Oral cancer cell line -KB. The histogram indicates % cytotoxicity exhibited by the standard and samples. Data presented is an average of three experiments, the bars on histogram denotes standard deviation.