

Table S1. Efficency of extraction for tiophene, pyridine and toluene.

	<b>Tiophene</b>	<b>Pyridine</b>	<b>Toluene</b>
<b><math>\tau</math>, min</b>	<b><math>\varepsilon</math>, %</b>		
1.60	26.03	44.43	9.36
1.84	30.76	59.23	7.76
2.21	33.79	74.48	8.95
3.684	37.38	76.17	9.73.
4.41	43.40	78.70	16.51
6.62	49.21	85.43	15.43
7.53	54.83	88.18	20.55
8.82	64.04	89.66	23.34
13.24	67.29	93.15	27.21
14.71	75.74	96.15	31.09
20.45	73,19	96.34	30.25
26.47	70.64	96.53	29.41

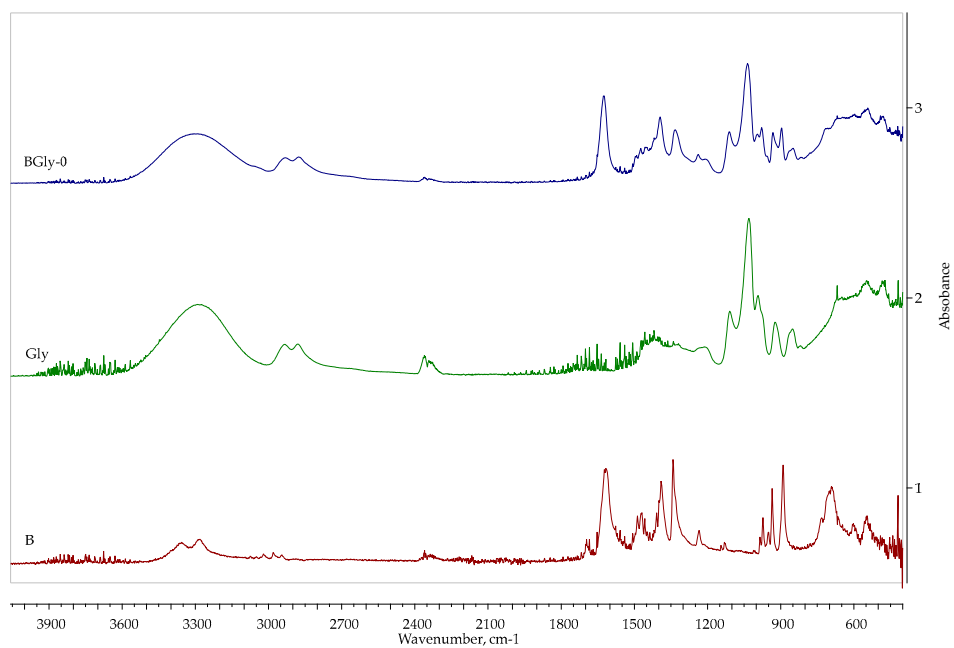


Figure S1. FTIR comparison of pure components and BGly-0.

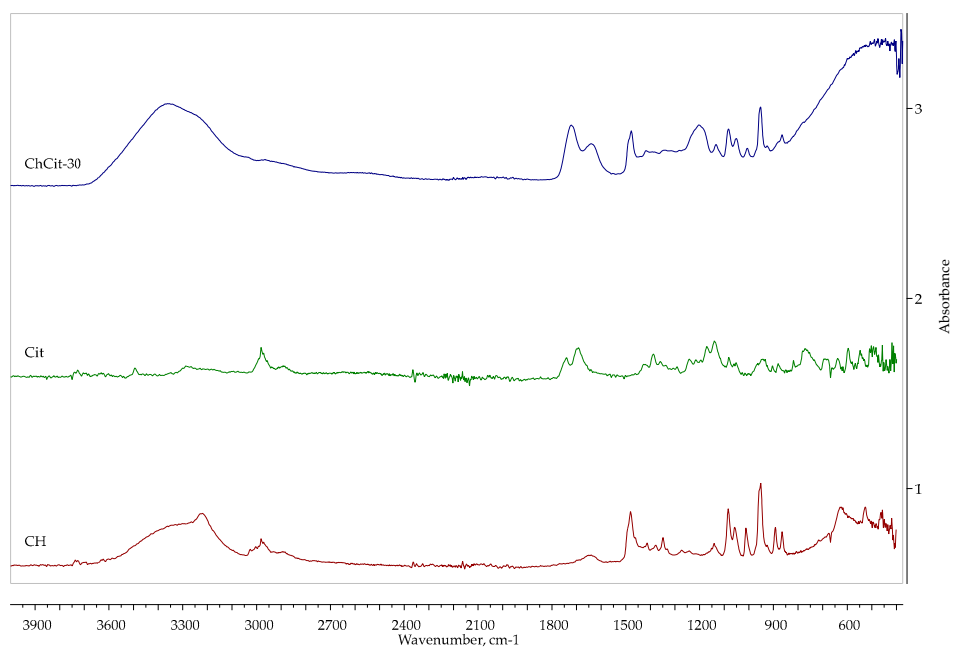


Figure S2. FTIR comparison of pure components and ChCit-30.

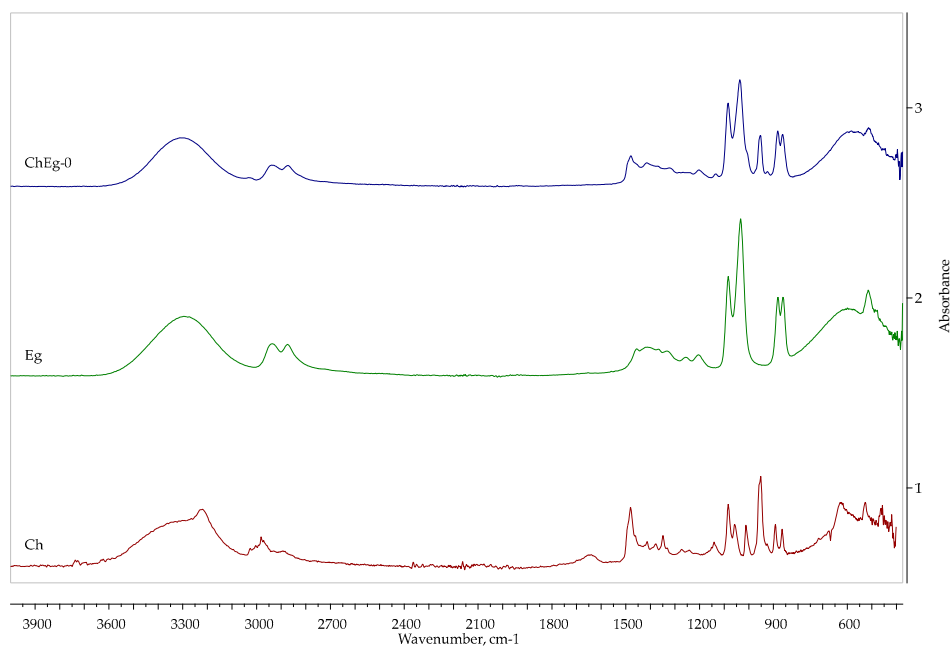


Figure S3. FTIR comparison of pure components and ChEg-0.

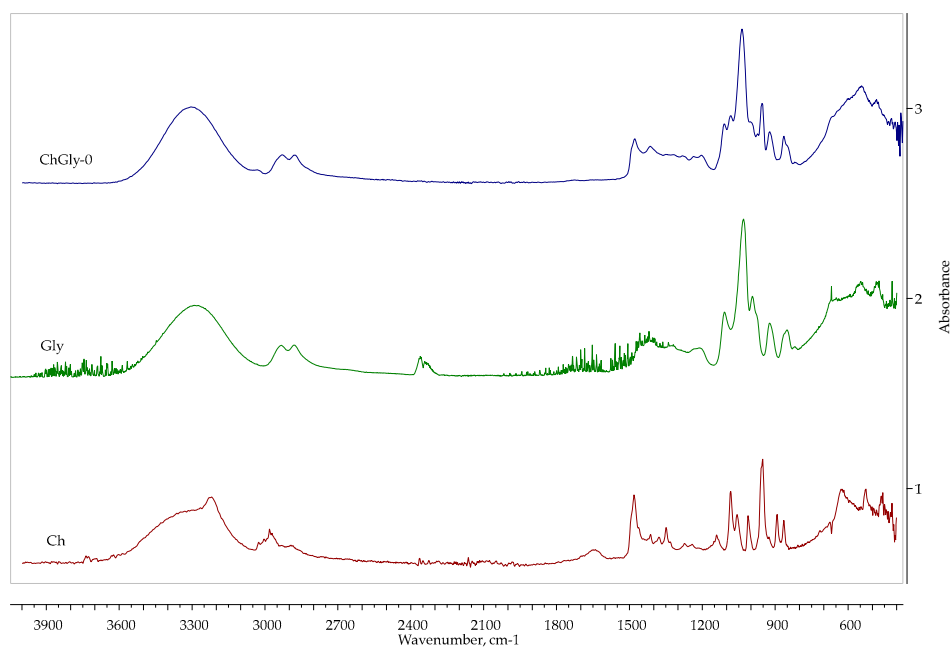


Figure S4. FTIR comparison of pure components and ChGly-0.

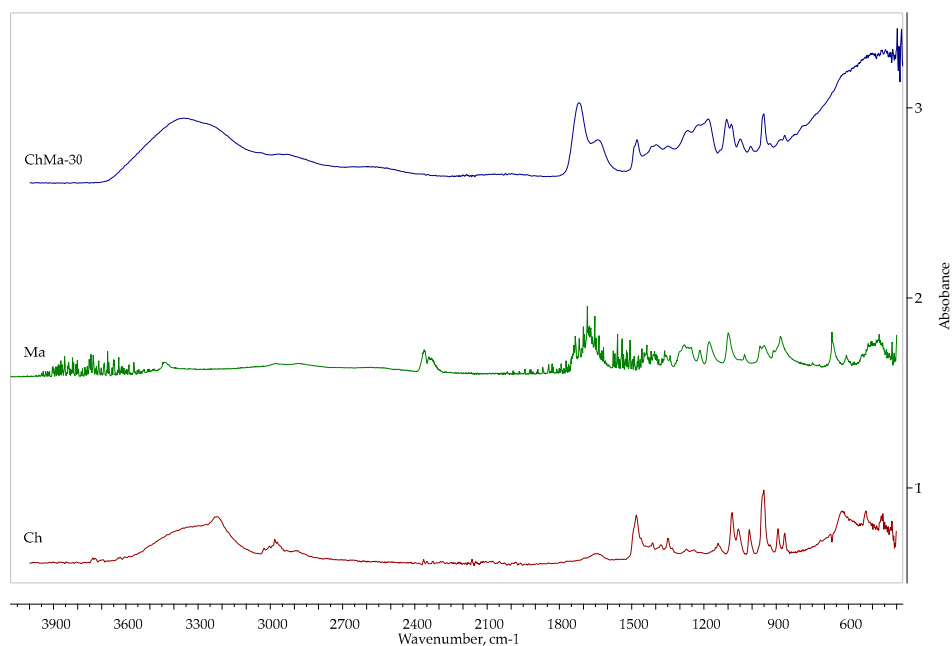


Figure S5. FTIR comparison of pure components and ChMa-30.

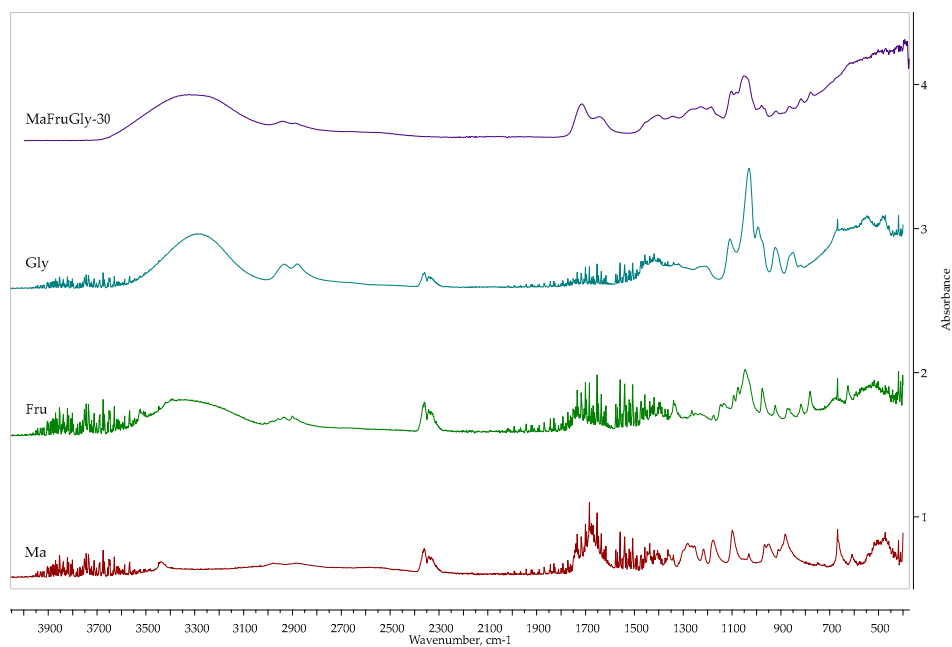


Figure S6. FTIR comparison of pure components and MaFruGly-0.

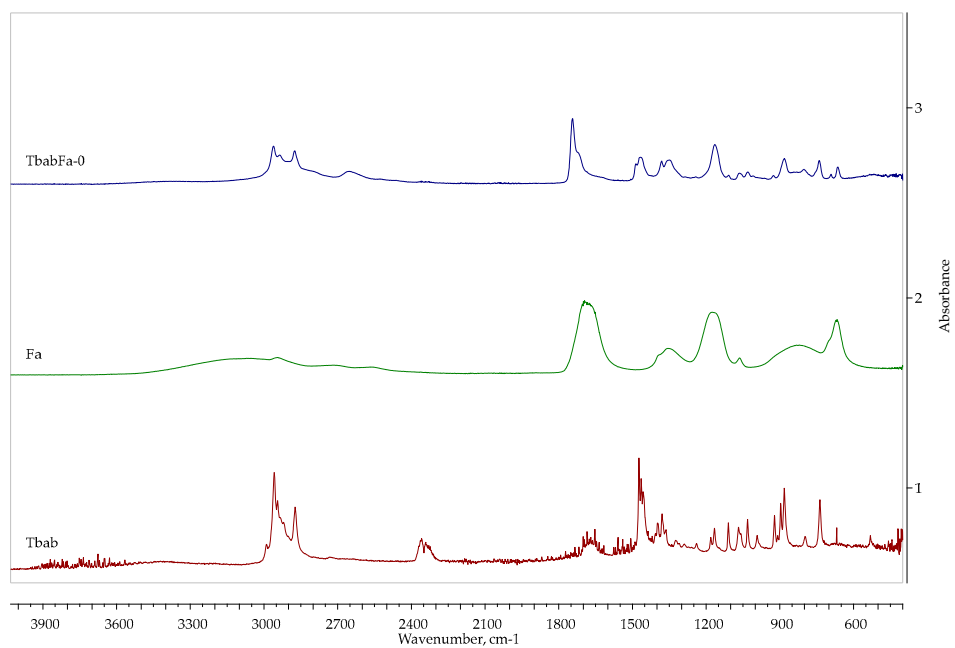


Figure S7. FTIR comparison of pure components and TbabFa-0.