

Fabrication and Evaluation of PCL/PLGA/ β -TCP Spiral-Structured Scaffolds for Bone Tissue Engineering

Weiwei Wang ^{1,†}, Xiaqing Zhou ^{1,†}, Haoyu Wang ¹, Gan Zhou ² and Xiaojun Yu ^{1,*}

¹ Department of Biomedical Engineering, Charles V. Schaefer School of Engineering and Sciences, Stevens Institute of Technology, Hoboken, NJ 07030, USA; wwang19@stevens.edu (W.W.); xzhou12@stevens.edu (X.Z.); hwang40@stevens.edu (H.W.)

² Department of Chemistry and Chemical Biology, Charles V. Schaefer School of Engineering and Sciences, Stevens Institute of Technology, Hoboken, NJ 07030, USA

* Correspondence: xyu@stevens.edu; Tel.: +1-201-216-5256

† These authors contributed equally to this work.

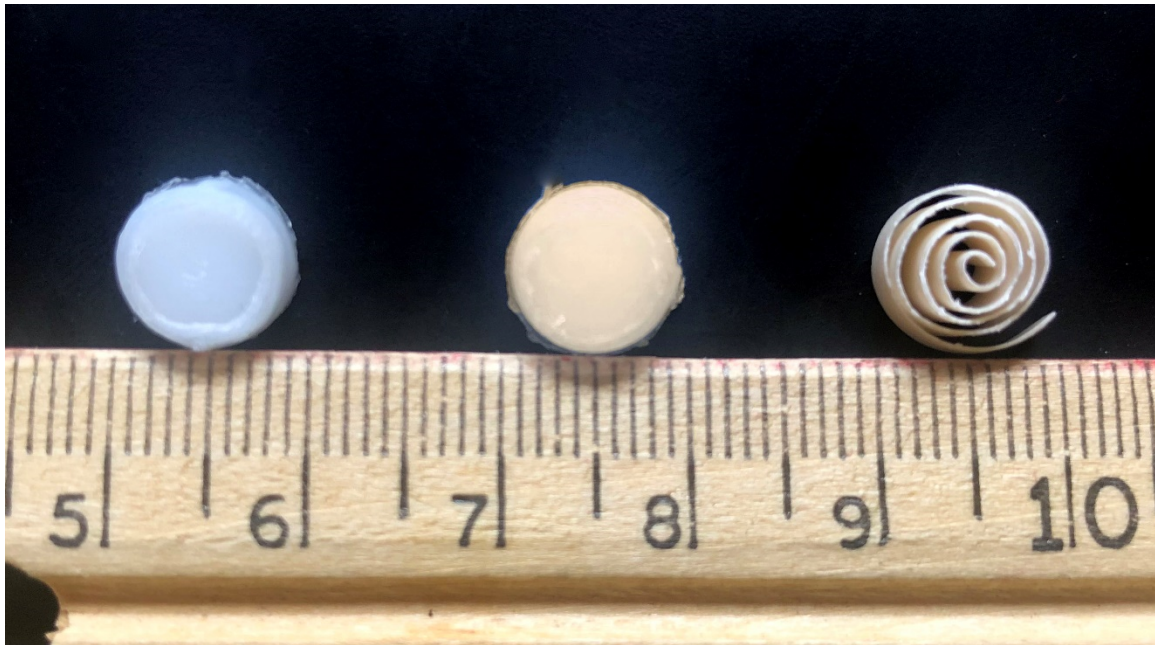


Figure S1. Photo of three different types of scaffold: PCL cylinder (left), PPBC (middle), and PPBS (right).