

Supplementary

The Impact of the Extracellular Matrix Environment on *Sost* Expression by the MLO-Y4 Osteocyte Cell Line

Robert T. Brady ^{1,2,3,4}, Fergal J. O'Brien ^{1,2,3}, David A. Hoey ^{2,3,4,*}

¹ Tissue Engineering Research Group, Department of Anatomy & Regenerative Medicine, Royal College of Surgeons in Ireland, Dublin, D02 YN77, Ireland. robertthomasbrady@gmail.com (R.T.B.); fjobrien@rcsi.ie (F.J.O'B)

² Trinity Centre for Biomedical Engineering, School of Engineering, Trinity College Dublin, Dublin, D02 PN40, Ireland

³ Advanced Materials and BioEngineering Research Centre (AMBER), Trinity College Dublin & Royal College of Surgeons in Ireland, Dublin, D02 PN40, Ireland

⁴ Department of Mechanical, Manufacturing, and Biomedical Engineering, Trinity College Dublin, Dublin, D02 PN40, Ireland

* Correspondence: dahoe@tcd.ie

Table S1. Table related to primer sequences and concentrations employed in quantitative PCR analysis.

Gene symbol	T _m (°C)	Primer concentration	Sequence	Amplicon Size
18s	65	400 nM	5'-GTAACCCGTTGAACCCCAT-3' 3'-CCATCCAATCGGTAGTAGCG-5'	151bp
<i>Sost</i>	60	400 nM	5'-CGTGCCTCATCTGCCTACTT-3' 3'-ATAGGGATGGTGGGGAGGT-5'	185bp

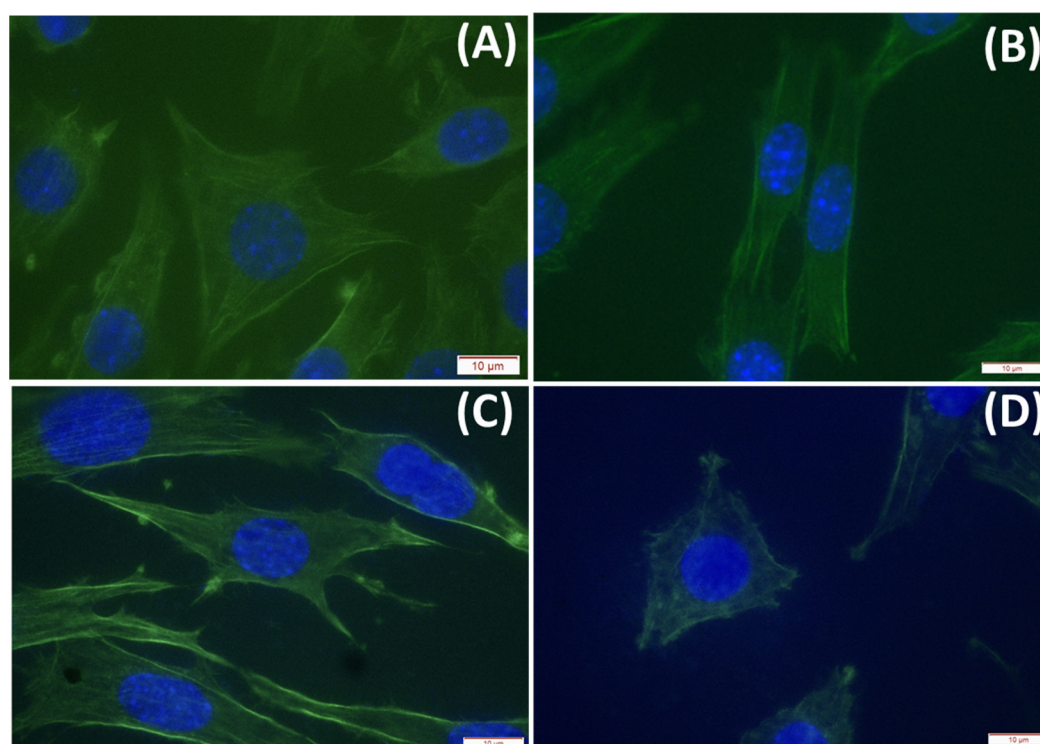


Figure S1. High magnification of MLO-Y4 cells cultured on different substrates of (A) Collagen-1 (Coll 2D), (B) Collagen-1 + Chondroitin Sulphate (Coll-GAG 2D), (C) Collagen-1 + Hydroxyapatite (Coll-HA 2D), (D) Collagen-1 + Chondroitin Sulphate + Hydroxyapatite (Coll-GAG-HA 2D). (scale = 10μm).

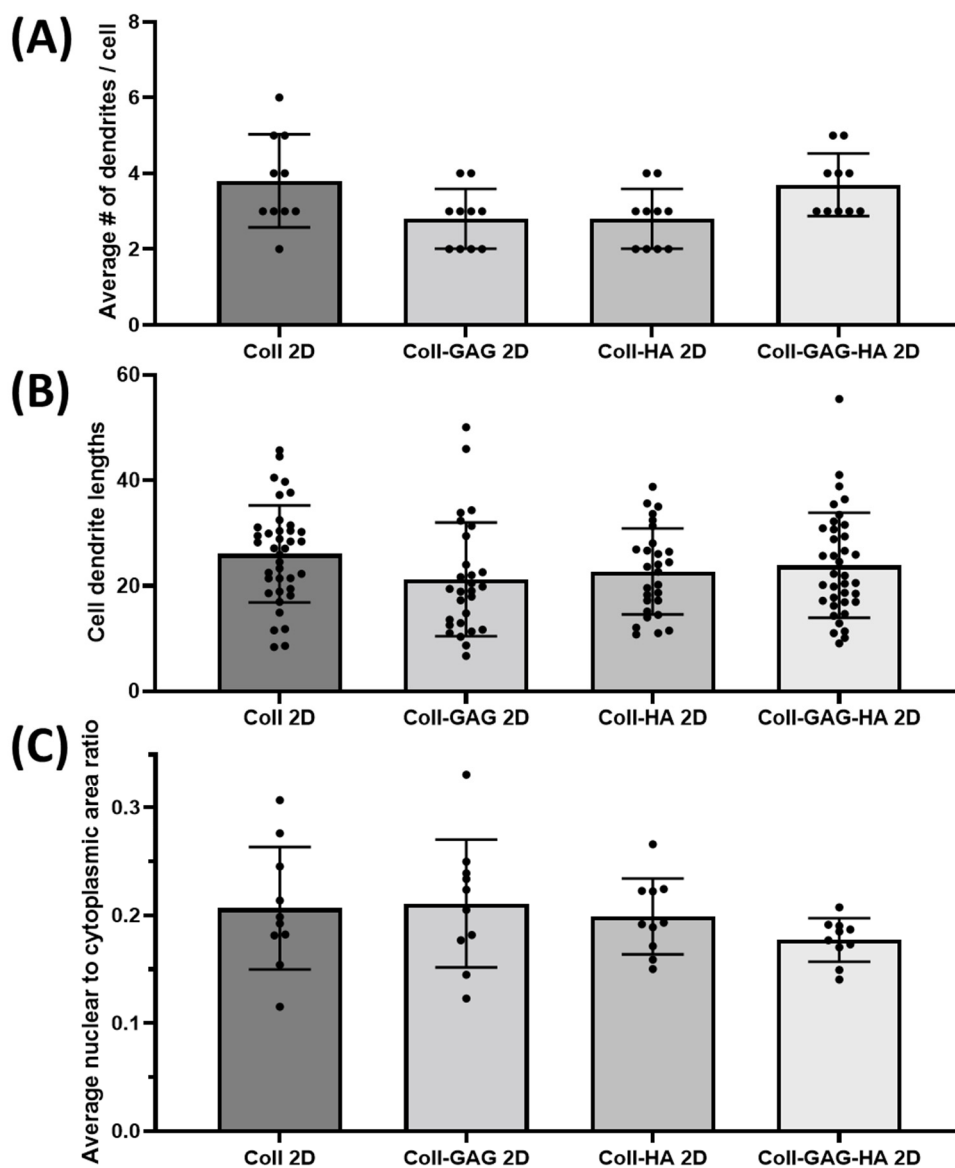


Figure S2. Morphological data from cells cultured on 2D substrates for 72 hours. **(A)** There were no significant differences in total number of dendrites per cells cultured upon different substrates. **(B)** There were no significant differences in the length of dendrites when cells were cultured upon different substrates. **(C)** There were also no significant differences in the nuclear to cytoplasmic to ratio of cells when cultured upon different substrates.