

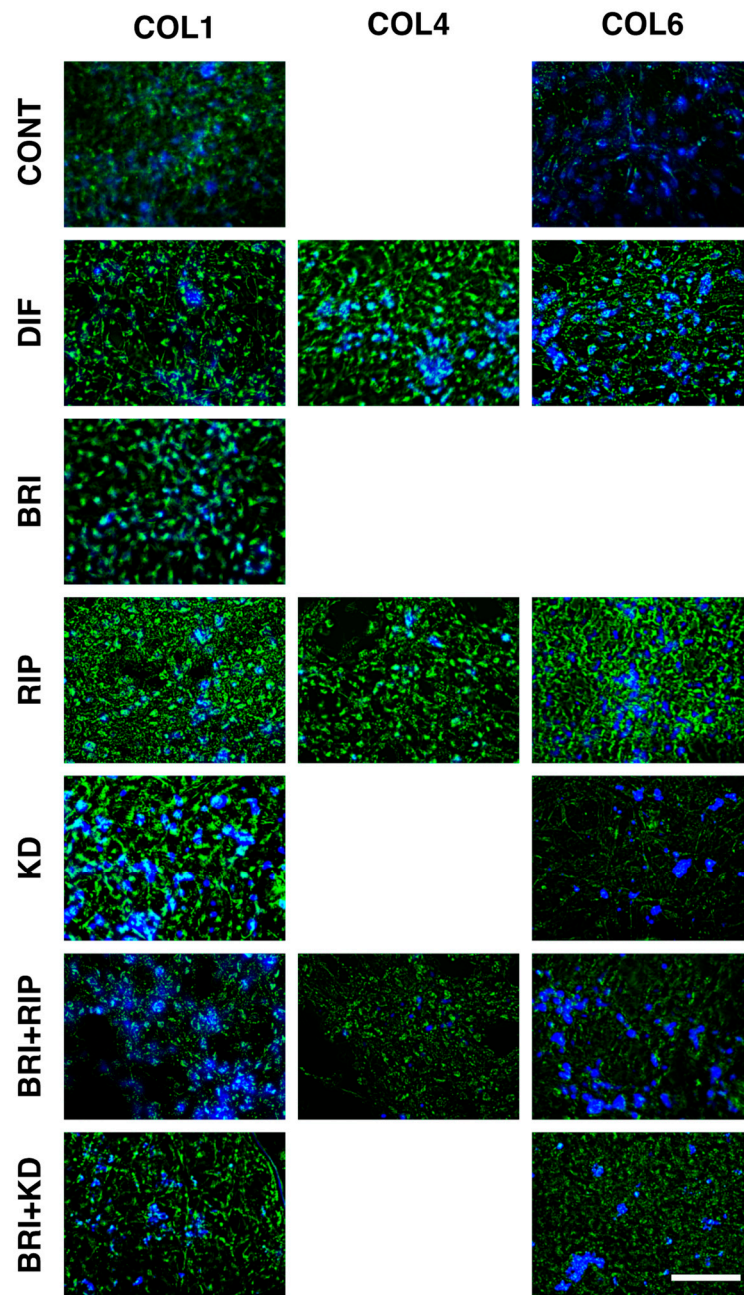
## Supplementary Materials

**Supplemental Table S1.** Primers for qPCR.

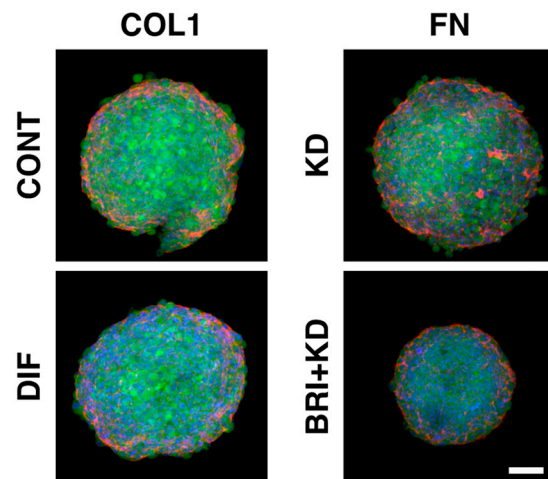
Gene	Forward primer (5' to 3')	Reverse primer (5' to 3')	TaqMan probe (5' to 3')
<b>Mouse</b>			
<i>36b4</i>	TTATAACCCTGAAGTG CTCGAC	CGCTTGTACCCATT- GATGATG	/FAM/AG- GCCCTGC/ZEN/ACTCTCGCTT/IABkFQ/
<i>Col1a1</i>	CGCAAAGAGTC- TACATGTCTAGG	CATTGTG- TATGCAGCTGACTTC	/FAM/CCGGAGGTC/ZEN/CACAAA- GCTGAACA/IABkFQ/
<i>Col4a1</i>	TCTGGCTGTG- GAAAATGTGA	AATCCAATGACAC- CTTGCAAC	/FAM/TCTTTCTCC/ZEN/CTTTT- GTCCCTTCACGC/IABkFQ/
<i>Col6a1</i>	CCAGATGAGTGTGA- GATCCTG	AAGTTCTG- TAGGCCAATGCTC	/FAM/ACCCATTGA/ZEN/CATCCTCTTCGT GCTG/IABkFQ/
<i>Fn1</i>	GAGCTATCCATTTCAC- CTTCAGA	TTGTTTCGTAGACAC- TGGAGA	/FAM/CAGGAGATT/ZEN/TGTTAGGAC- CACGGCA/IABkFQ/
<i>Pparg</i>	CTGCTCCACAC- TATGAAGACAT	TGCAGGTTCTACTTT- GATCGC	/FAM/AGCTGACCC/ZEN/AATGGTT- GCTGATTACA/IABkFQ/
<i>Fabp4</i>	AAATCACCGCAGAC- GACAG	CCTTTCATAACACATT CCACCAC	/FAM/TGAAGAGCA/ZEN/TCATAACCCTA- GATGGCG/IABkFQ/

**Supplemental Table S2.** the use of macro for Image J to define 3D spheroid size.

Image J macro
<pre> title = getTitle(); run("Make Composite"); run("Split Channels"); close("C3-" + title); selectWindow("C1-" + title); run("Duplicate..."); setAutoThreshold("Huang dark"); //run("Threshold..."); setOption("BlackBackground", true); run("Convert to Mask"); run("Set Measurements...",     "area mean standard integrated limit display redirect=" + "C2-" + title + " decimal=2"); run("Analyze Particles...", "size=50000-Infinity pixel show=Outlines display exclude include"); </pre>



**Supplemental Figure S1.** Effects of ROCK-i and/or BRI on the immunolabeling of ECM proteins of 2D cultured 3T3-L1 cells.



**Supplemental Figure S2.** Effects of ROCK-i and/or BRI on the immunolabeling of ECM proteins of 3D cultured 3T3-L1 cells.