

Figure S1.a: Uncropped western blot bands for Figure 3

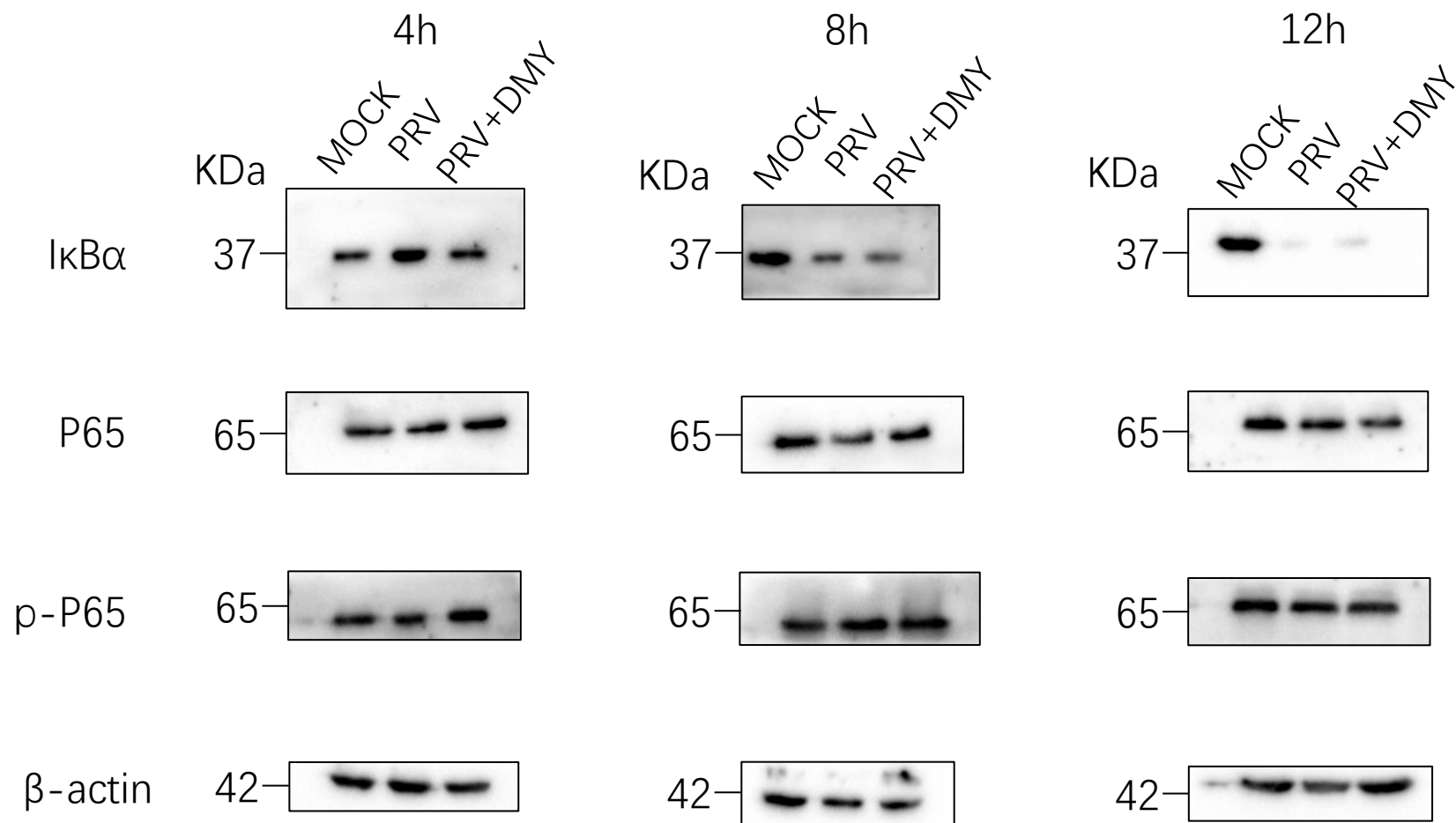


Figure S1.b

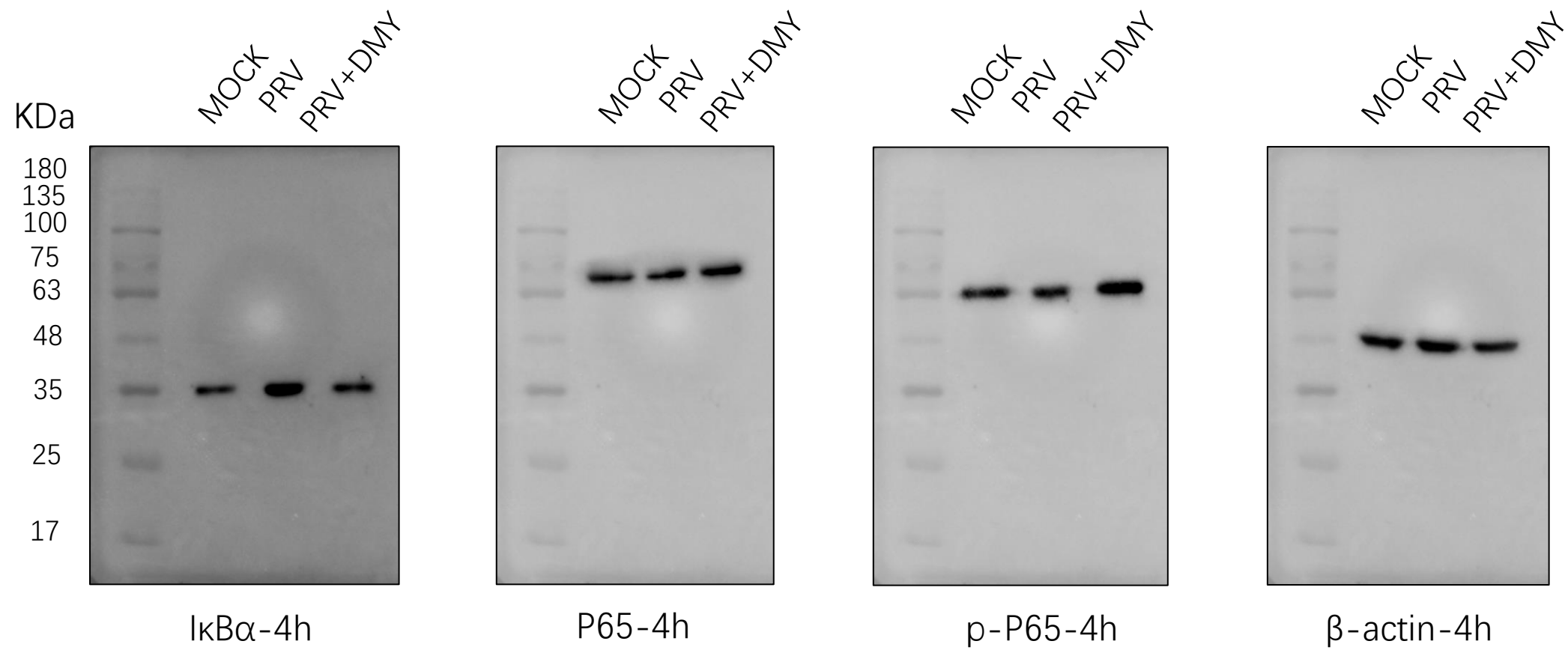


Figure S1.c

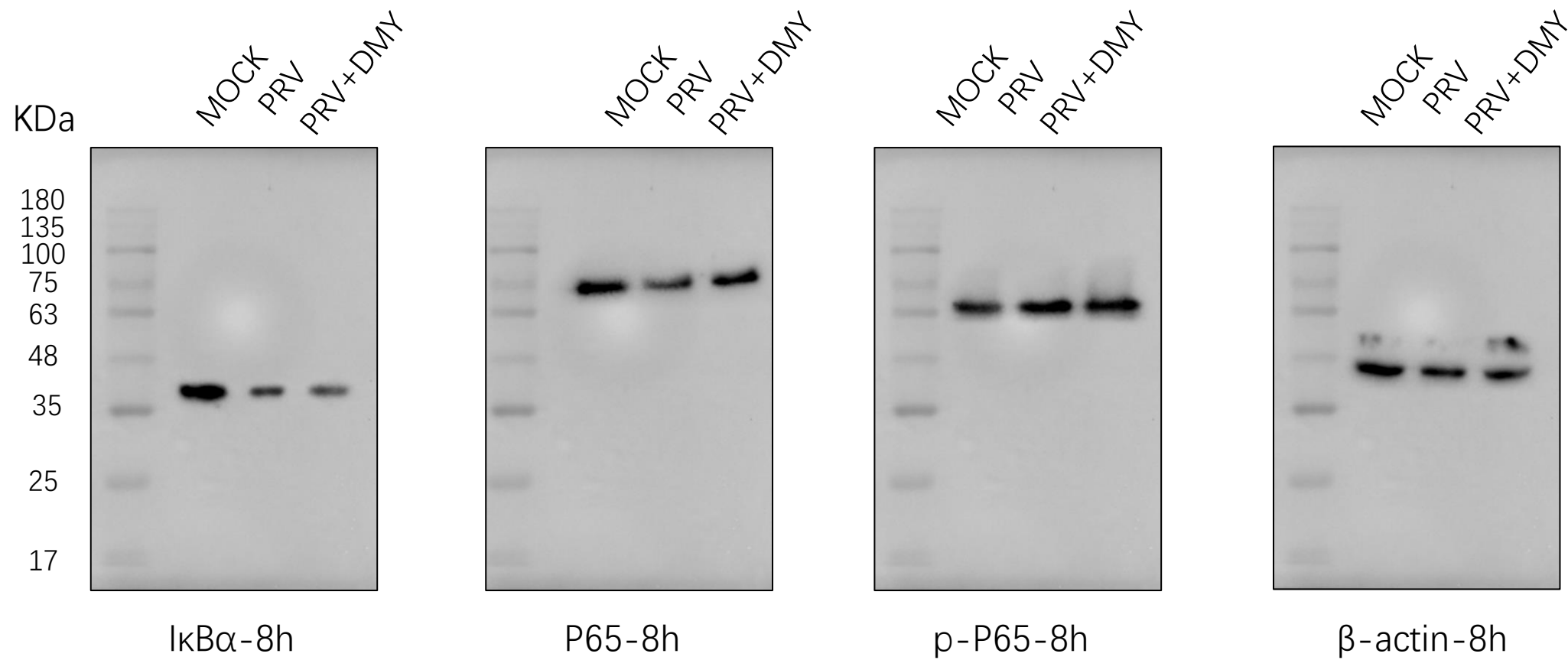


Figure S1.d

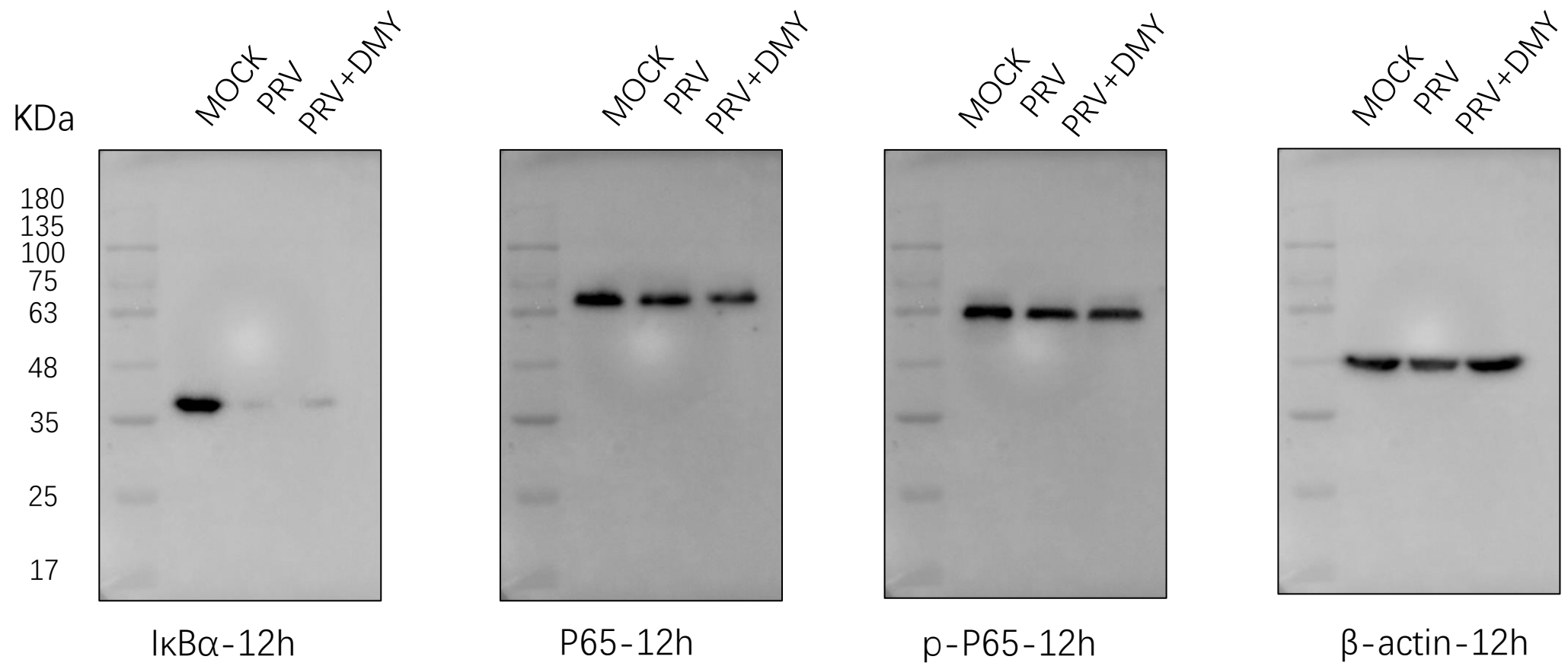


Table S1: Intensity ratio of the Western blot bands in Figure 3

4h	Mock	PRV	PRV+DMY
I κ B α	1	2.02 \pm 0.04	0.78 \pm 0.03
P65	1	0.81 \pm 0.02	1.33 \pm 0.05
p-P65	1	0.76 \pm 0.01	1.18 \pm 0.03
β -actin	1	1.01 \pm 0.09	0.97 \pm 0.05
8h	Mock	PRV	PRV+DMY
I κ B α	1	0.15 \pm 0.04	0.32 \pm 0.06
P65	1	1.32 \pm 0.06	0.80 \pm 0.03
p-P65	1	1.15 \pm 0.03	0.95 \pm 0.02
β -actin	1	1.05 \pm 0.06	1.09 \pm 0.09
12h	Mock	PRV	PRV+DMY
I κ B α	1	0.05 \pm 0.01	0.12 \pm 0.02
P65	1	0.85 \pm 0.01	0.52 \pm 0.01
p-P65	1	0.81 \pm 0.02	0.93 \pm 0.03
β -actin	1	1.04 \pm 0.05	1.05 \pm 0.07

Figure S2.a: Uncropped western blot bands for Figure 4

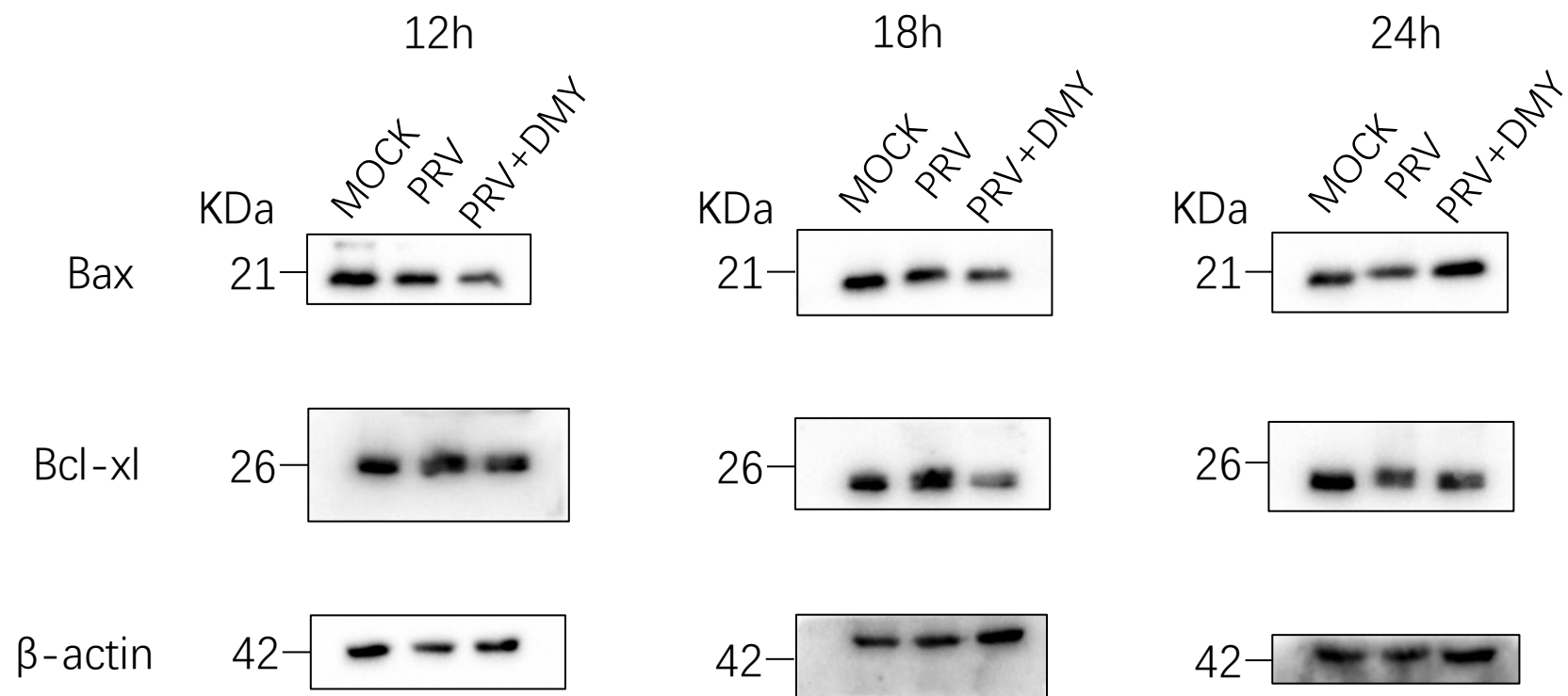


Figure S2.b

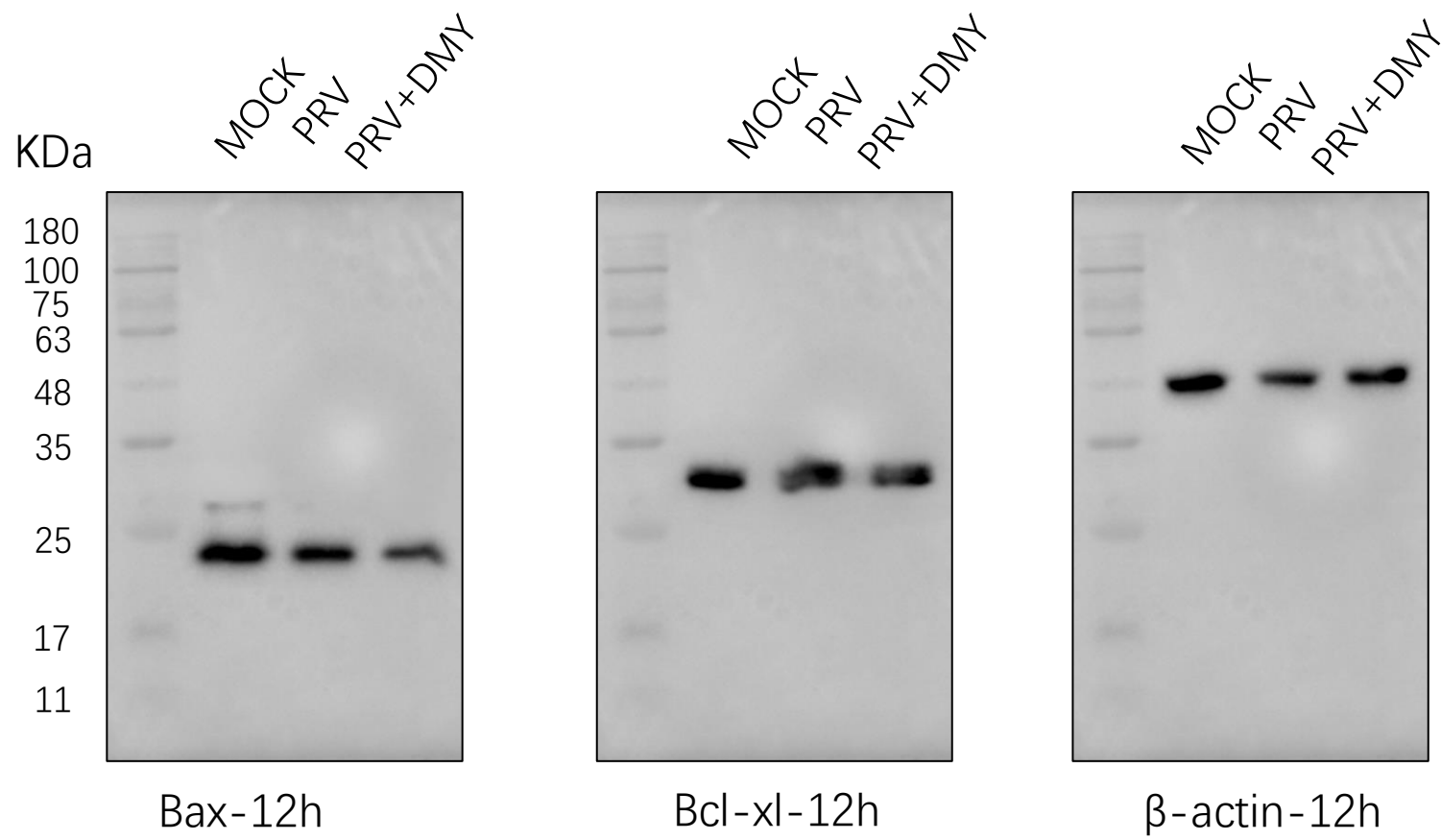


Figure S2.c

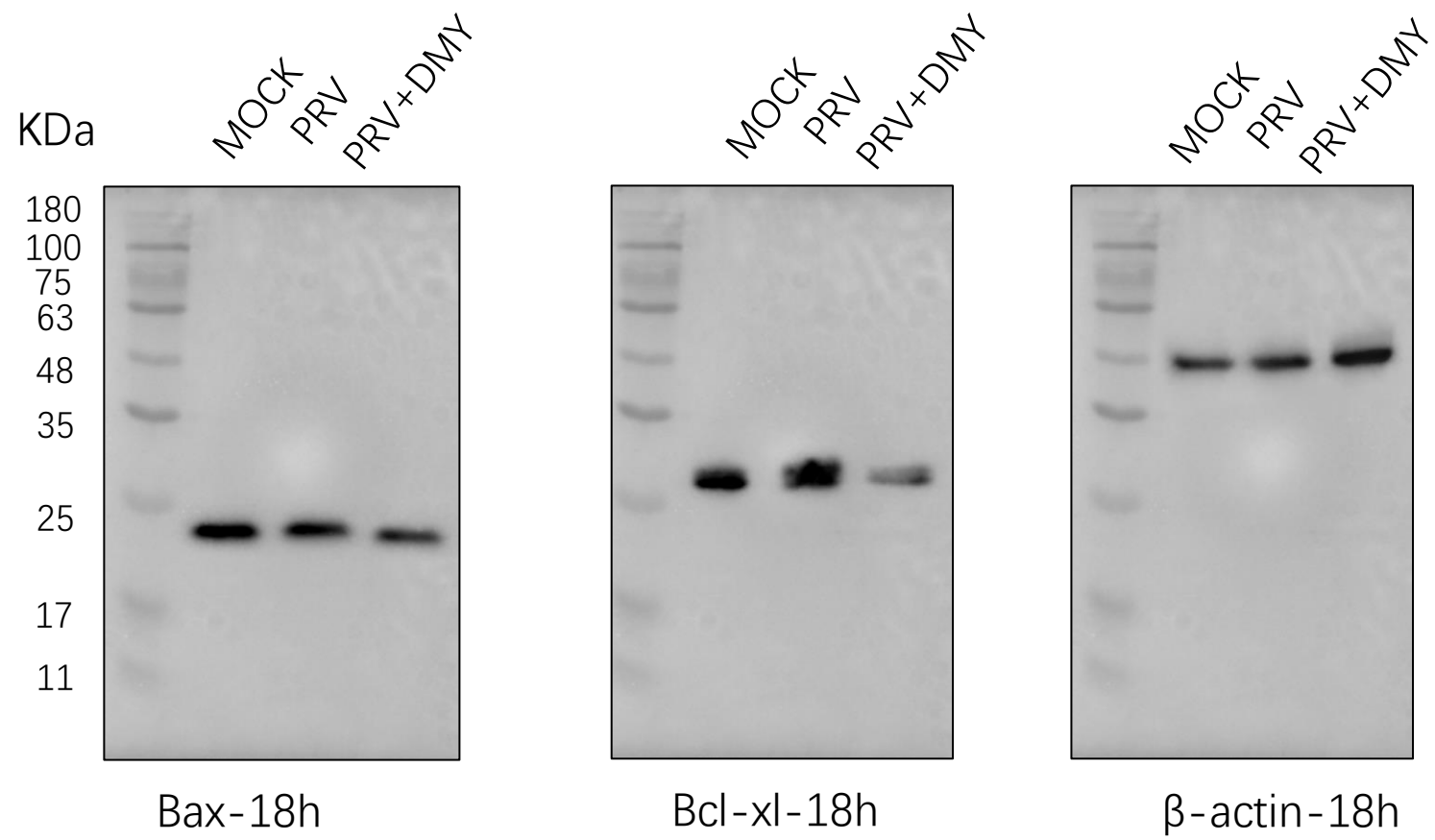


Figure S2.d

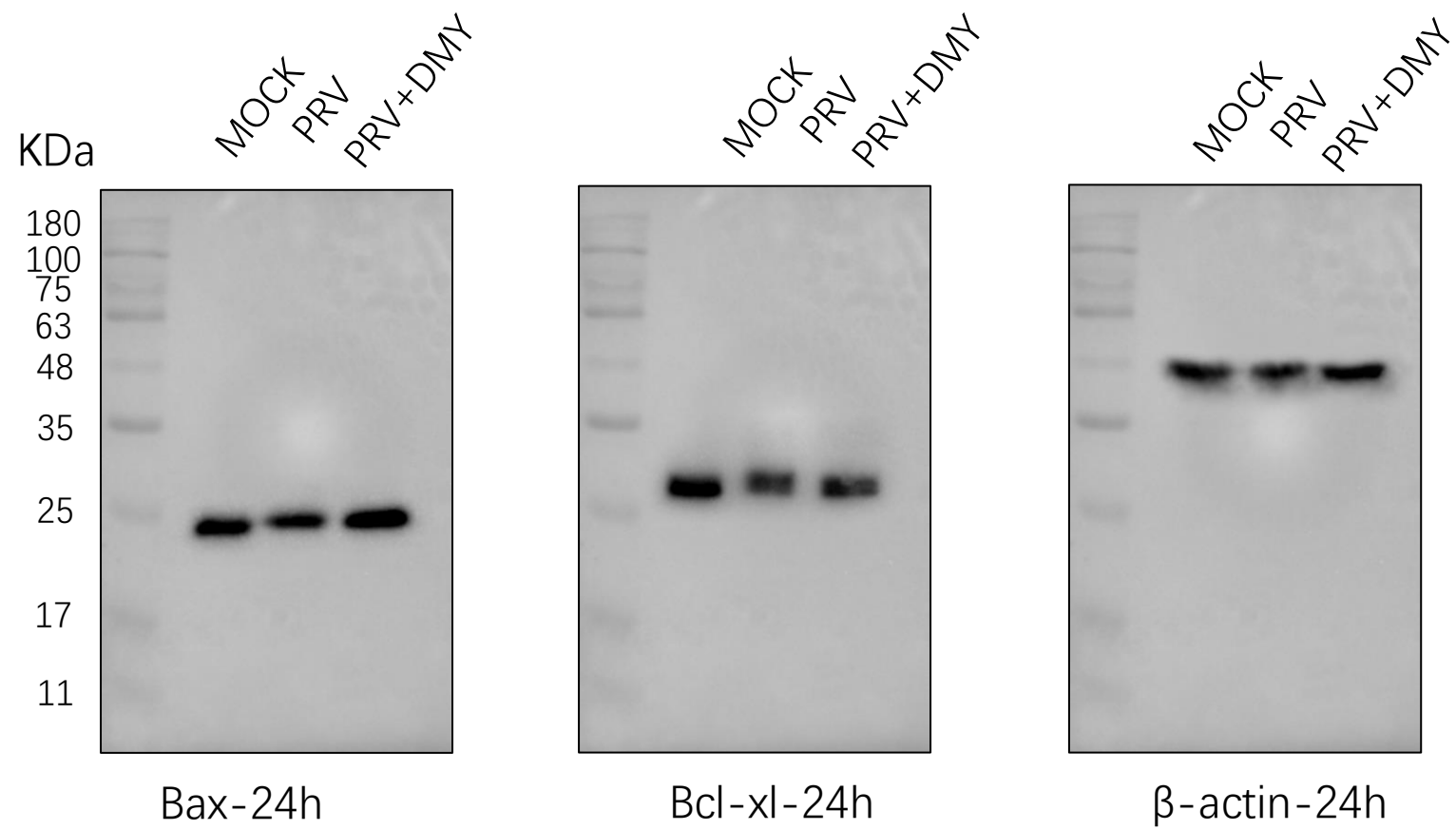


Table S2: Intensity ratio of the Western blot bands in Figure 4

12h	Mock	PRV	PRV+DMY
Bax	1	0.84±0.02	0.54±0.01
Bcl-xl	1	1.47±0.01	0.62±0.02
β-actin	1	0.93±0.04	1.06±0.13

18h	Mock	PRV	PRV+DMY
Bax	1	0.79±0.01	0.53±0.01
Bcl-xl	1	1.30±0.02	0.67±0.01
β-actin	1	0.98±0.01	1.09±0.04

24h	Mock	PRV	PRV+DMY
Bax	1	0.78±0.01	1.23±0.02
Bcl-xl	1	0.80±0.01	0.51±0.01
β-actin	1	0.99±0.01	1.07±0.02