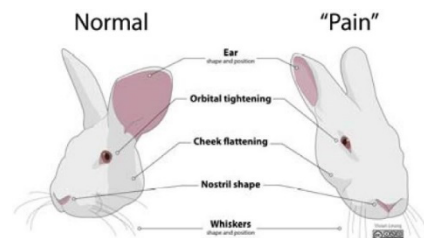




Scheda CANCRS



Nome Coniglio	Proprietario		C.C.	Età	Sesso	Razza
Giorno	h inizio anest	h fine chirurgia	H risveglio		Peso	
Tipo Chirurgia	Tipo Analgesia		gg/h Ripresa Appetito		gg/h Ripresa defecazione	
Altri Farmaci			Dose			Via

		Pre-chirurgia	6h Post	Giorno 2, h9	Giorno 2, h13	Giorno 2, h18
Orbital tightening	Not present	0	0	0	0	0
	Moderately present	1	1	1	1	1
	Obviously present	2	2	2	2	2
Cheek flattening	Not present	0	0	0	0	0
	Moderately present	1	1	1	1	1
	Obviously present	2	2	2	2	2
Nostril shape	Not present	0	0	0	0	0
	Moderately present	1	1	1	1	1
	Obviously present	2	2	2	2	2
Whisker position	Not present	0	0	0	0	0
	Moderately present	1	1	1	1	1
	Obviously present	2	2	2	2	2
Ear position (no per Ariete)	Not present	0	0	0	0	0
	Moderately present	1	1	1	1	1
	Obviously present	2	2	2	2	2
Pupil dilation	Not present	0	0	0	0	0
	Moderately present	1	1	1	1	1
	Obviously present	2	2	2	2	2
Heart rate	Increases ≤20% of the physiological value (250 bpm): <300 bpm	0	0	0	0	0
	Increases between 20% and 50% of the physiological value (250 bpm): 300-375 bpm	1	1	1	1	1
	Increases > 50% of the physiological value (250 bpm): >375 bpm	2	2	2	2	2
Respiratory rate	≤ 60 bpm	0	0	0	0	0
	61 - 72 bpm	1	1	1	1	1
	73 - 90 bpm	2	2	2	2	2
	> 90 bpm	3	3	3	3	3
Respiratory pattern	Eupneic	0	0	0	0	0
	Dyspneic	1	1	1	1	1
Palpation of the painful area	No reaction	0	0	0	0	0
	Reaction during the palpation	1	1	1	1	1
	Reaction before the palpation	2	2	2	2	2
Vocalization	Absent	0	0	0	0	0
	When touched	1	1	1	1	1
	Intermittent vocalization without any contact	2	2	2	2	2
	Continuous vocalization without any contact	3	3	3	3	3
Mental status	Normal	0	0	0	0	0
	Depression	1	1	1	1	1
	Obtundation	2	2	2	2	2
Totale						