

Table S1. Levels of selected cytokines in colon tissue.

	Cytokine	Group	
		DSS	C
pg/mg of tissue protein	IL-1 α	0.467 \pm 0.108	0.245 \pm 0.219
	IL-1 β	132.80 \pm 44.1	11.08 \pm 0.727
	IL-2	0.362 \pm 0.049	0.145 \pm 0.072
	IL-4	0.022 \pm 0.006	0.023 \pm 0.009
	IL-5	0.583 \pm 0.096	0.261 \pm 0.081
	IL-6	0.026 \pm 0.006	0.028 \pm 0.008
	IL-10	0.628 \pm 0.138	0.699 \pm 0.350
	IL-12p70	3.892 \pm 0.861	1.260 \pm 0.179
	IL-13	0.179 \pm 0.062	0.422 \pm 0.394
	G-CSF	1.742 \pm 0.862	0.518 \pm 0.499
	TNF- α	0.857 \pm 0.546	0.243 \pm 0.102

Values are expressed as mean \pm SEM ($n = 16/\text{DSS group}$; $n = 6/\text{C group}$). Abbreviations: IL, interleukin; G-CSF, granulocyte colony-stimulating factor; TNF- α , tumour necrosis factor α . DSS, induced colitis; C, healthy control.

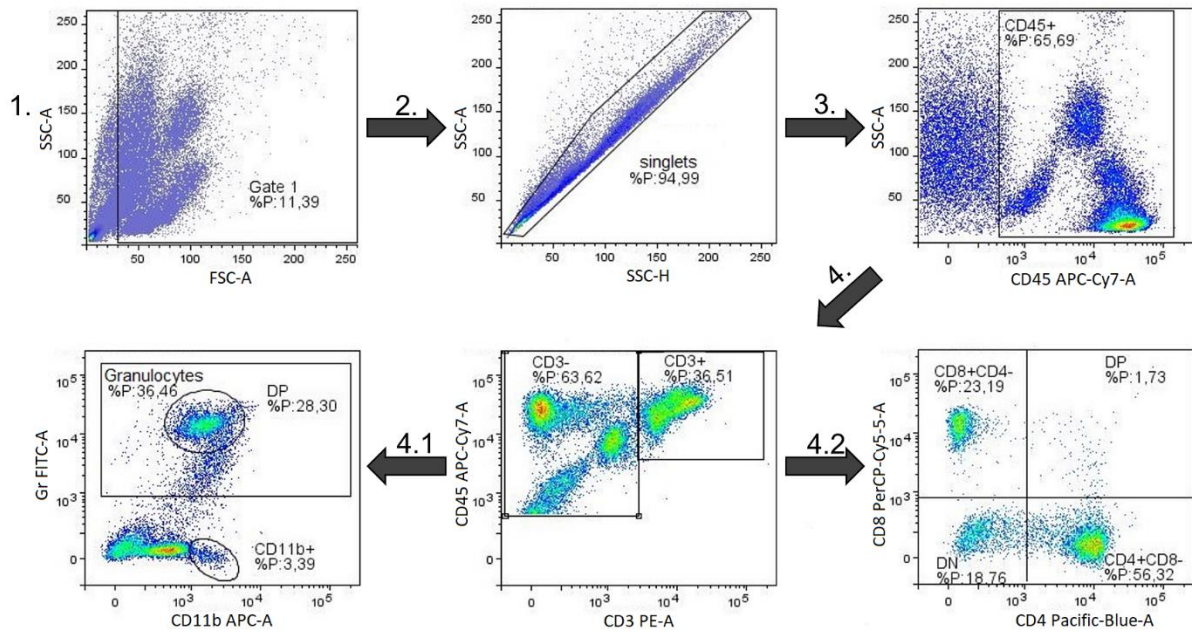


Figure S1. Representative flow cytometry gating strategy for identification of T-cell subsets and neutrophils in the blood.

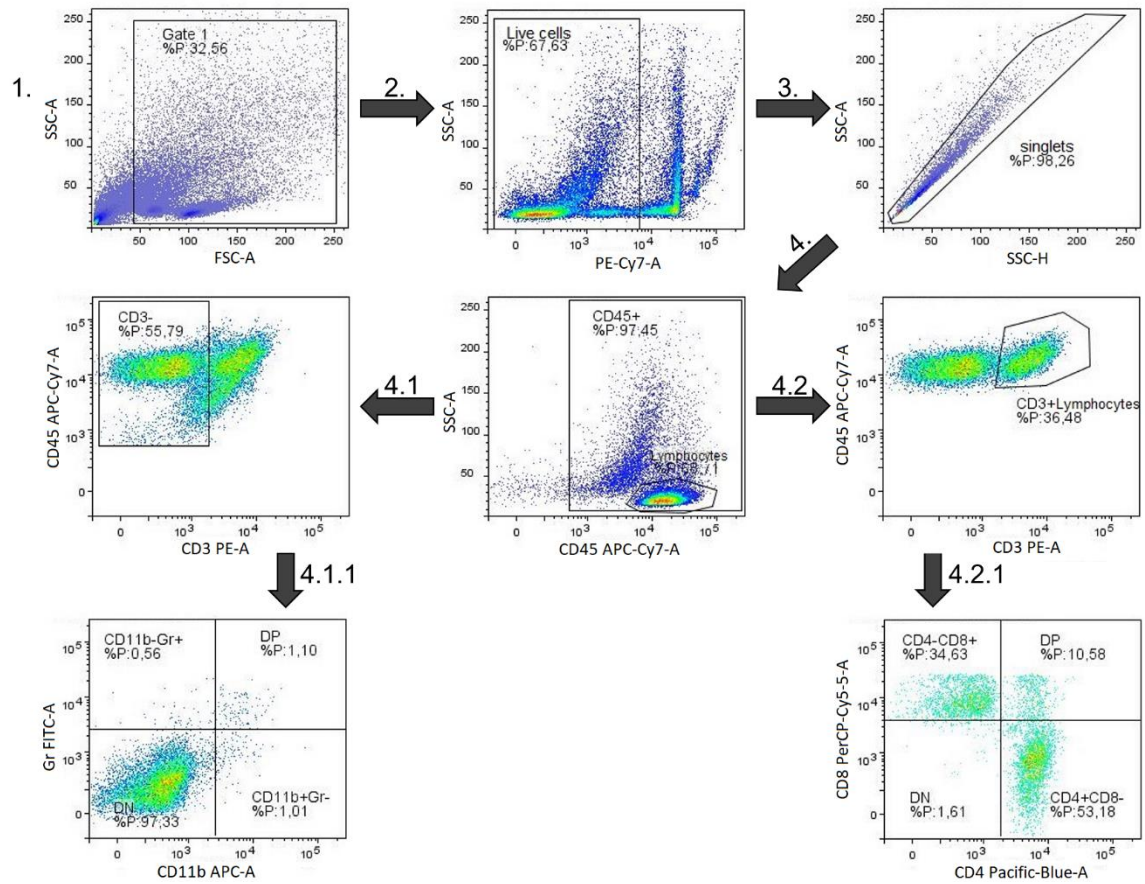


Figure S2. Representative flow cytometry gating strategy for identification of T-cell subsets and neutrophils in the colon tissue.

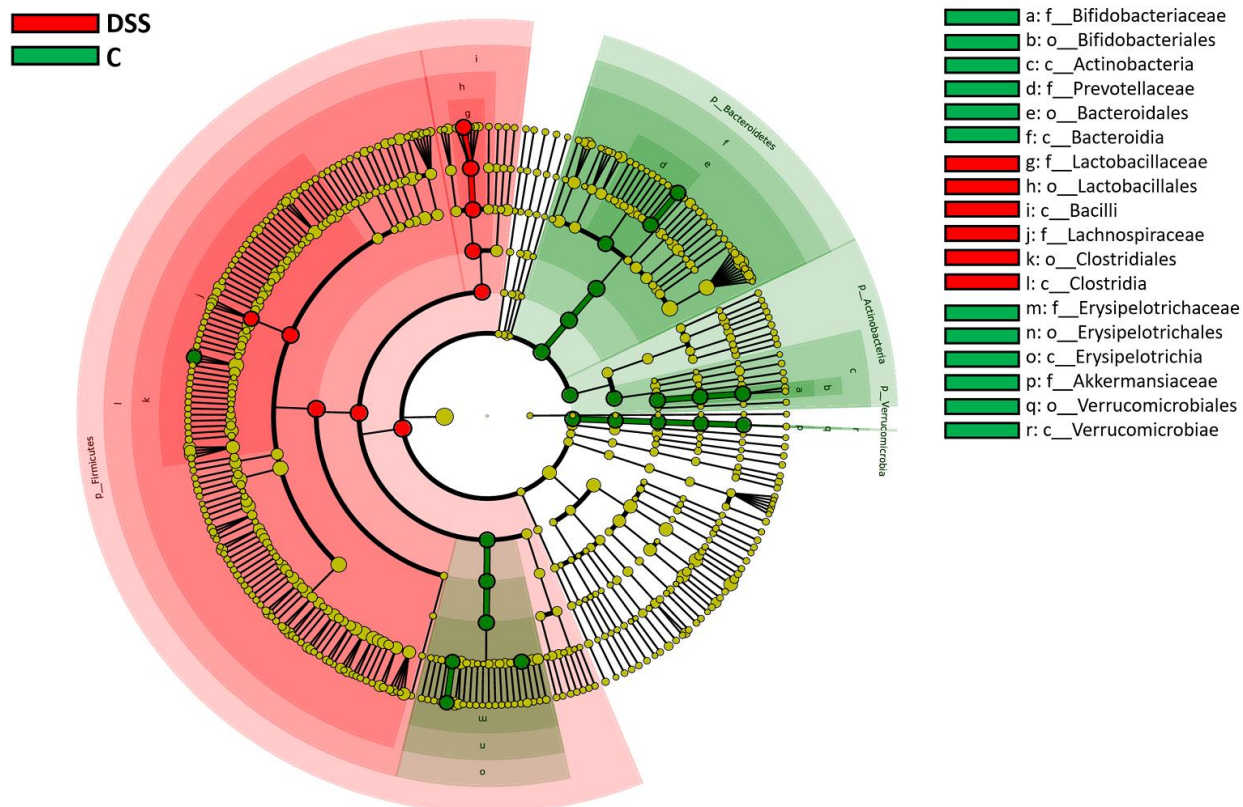


Figure S3. The cladogram plotted from LefSe analysis showing taxa enriched in the DSS (red) and control (green) groups. The red and green circles mean that DSS and C showed differences in relative abundance and yellow circles mean non-significant differences. The name of the taxon level is abbreviated as c-class; o-order and f-family. DSS, induced colitis; C, healthy control.

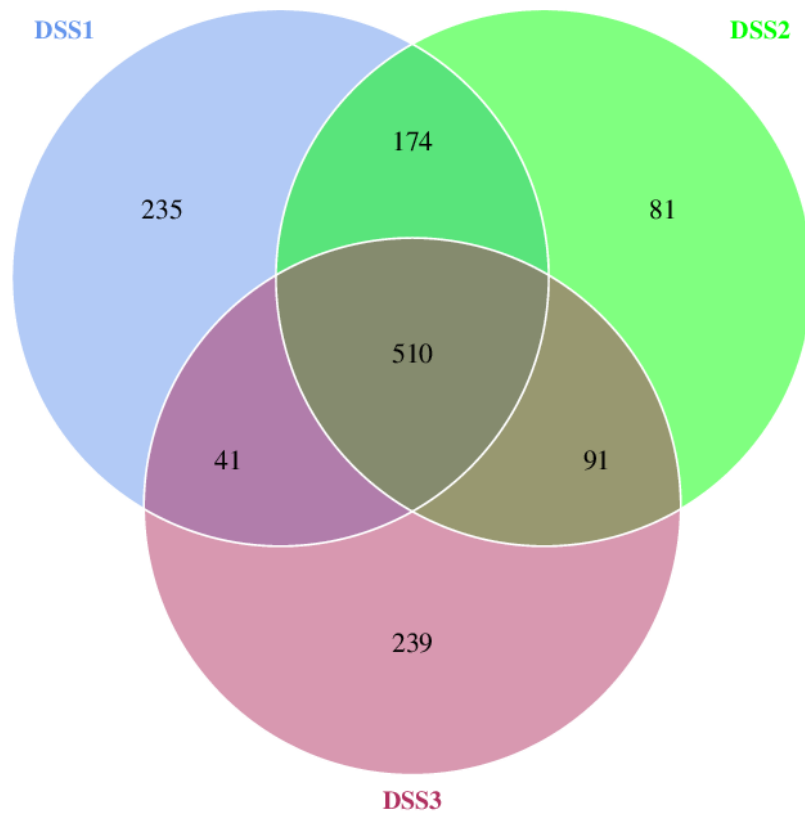


Figure S4. Venn diagrams for overlap of observed operational taxonomic units (OTUs) in faecal samples within DSS group collected at three different time points: 1, before induction of colitis (day 1); 2, at the end of DSS administration (day 7); 3, at the end of experiment (day 13). DSS, induced colitis.