

Supplement:

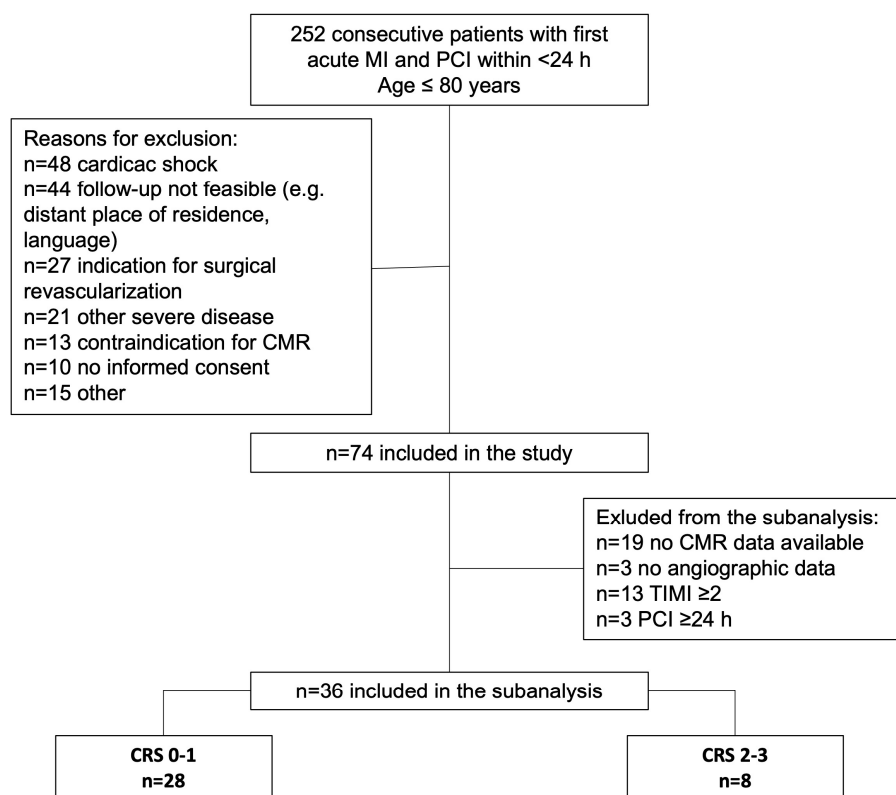


Figure S1. Flow diagram of patients included in the study. CAD: coronary artery disease; CMR: cardiac magnetic resonance; CRS: Cohen-Rentrop Score; MI: myocardial infarction; PCI: percutaneous coronary intervention.

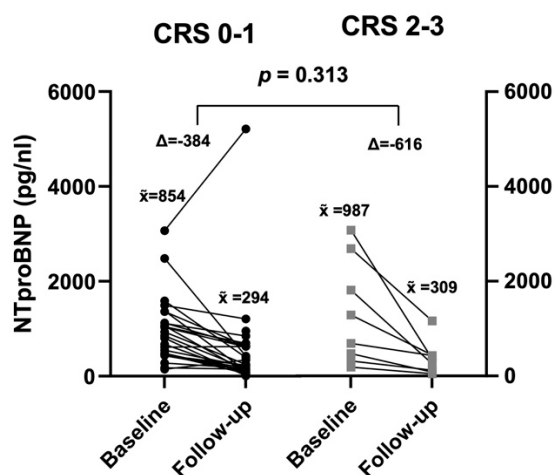


Figure S2. NT-proBNP at baseline and follow-up according to Cohen-Rentrop Score (CRS 0-1: black; CRS 2-3: grey). Δ: change; \bar{x} : median.

Table S1. Clinical Parameters.

New York Heart Association (NYHA)	CRS 0-1 (n = 28)	CRS 2-3 (n = 8)	p Value
Baseline			
Class I	19 (67.9%)	4 (50%)	
Class II	6 (21.4%)	3 (37.5%)	
Class III	0	0	
Class IV	0	0	
Follow-up			
Class I	19 (67.9%)	6 (75%)	
Class II	4 (14.3%)	1 (12.5%)	
Class III	1 (3.6%)	0	
Class IV	0	0	
Difference between baseline and follow-up			0.552
No change	17 (60.7%)	5 (62.5%)	
Worse ($\Delta +1$)	2 (7.1%)	1 (12.5%)	
Better ($\Delta -1$)	3 (10.7%)	0	
Canadian Cardiovascular Society (CCS)			
Baseline			
Class 0	19 (67.9%)	4 (50%)	
Class I	4 (14.3%)	2 (25%)	
Class II	1 (3.6%)	1 (12.5%)	
Class III	0	0	
Class IV	0	0	
Follow-up			
Class 0	18 (64.3%)	7 (87.5%)	
Class I	5 (17.9%)	0	
Class II	1 (3.6%)	0	
Class III	0	0	
Class IV	1 (3.6%)	0	
Difference between baseline and follow-up			0.118
No change	16 (57.1%)	4 (50%)	
Worse ($\Delta +1$)	2 (7.1%)	0	
Better ($\Delta -1$)	4 (14.3%)	2 (25%)	
Better ($\Delta -2$)	0	1 (12.5%)	

CRS: Cohen-Rentrop Score; Values are expressed as frequencies and percentages of each category.

Table S2. Volumetric CMR Parameters According to Cohen-Rentrop Score.

	CRS 0-1 (n = 28)	CRS 2-3 (n = 8)	p Value
Baseline			
LVEDV, ml/m ²	79 (± 12)	76 (± 17)	0.555
LVESV, ml/m ²	43 (± 12)	41 (± 11)	0.656
LVM, g/m ²	75 (± 11)	65 (± 17)	0.057
Follow-up after 12 weeks			
LVEDV, ml/m ²	81 (± 13)	62 (± 24)	0.083
LVESV, ml/m ²	43 (± 13)	34 (± 12)	0.126
LVM, g/m ²	65 (± 10)	61 (± 12)	0.345

Difference between baseline
and follow-up

LVEDV, ml/m ²	2 (±13)	-14 (±31)	0.195
LVESV, ml/m ²	1 (±7)	-7 (±9)	0.057

CRS: Cohen-Rentrop Score; CMR: cardiac magnetic resonance; LVEDV: left ventricular end-diastolic volume; LVESV: left ventricular end-systolic volume; LVM: left ventricular mass. Values are expressed as means ±95 standard deviation (SD). Bold values mean statistical significance.

Table S3. Medication at discharge and follow-up.

	CRS 0-1 (<i>n</i> = 28)	CRS 2-3 (<i>n</i> = 8)	<i>p</i> Value
At discharge			
ACEi/ARB at discharge, <i>n</i> (%)	27 (96)	8 (100)	1.00
β-Blocker at discharge, <i>n</i> (%)	27 (96)	8 (100)	1.00
Loop diuretics at discharge, <i>n</i> (%)	10 (36)	2 (25)	0.69
MRA at discharge, <i>n</i> (%)	19 (68)	2 (25)	0.046
P2Y12 inhibitor, <i>n</i> (%)	28 (100)	28 (100)	1.00
Statin, <i>n</i> (%)	26 (93)	8 (100)	1.00
At follow-up			
ACEi/ARB, <i>n</i> (%)	25 (100)	8 (100)	1.00
β-Blocker, <i>n</i> (%)	25 (96)	7 (88)	0.42
Loop diuretics, <i>n</i> (%)	12 (46)	2 (29)	0.67
MRA, <i>n</i> (%)	12 (46)	2 (25)	0.42
P2Y12 inhibitor, <i>n</i> (%)	18 (100)	8 (100)	1.00
Statin, <i>n</i> (%)	26 (100)	8 (100)	1.00

ACEi: ACE-inhibitor; ARB: angiotensin receptor blocker; CRS: Cohen-Rentrop Score; MRA: Mineralocorticoid receptor antagonist. Values are expressed as means ±95 standard deviation (SD). Bold values mean statistical significance.