

Figure S1. Self-constructed valved conduit out of a commercially available de-cellularized porcine small intestinal submucosal extracellular matrix biologic scaffold.

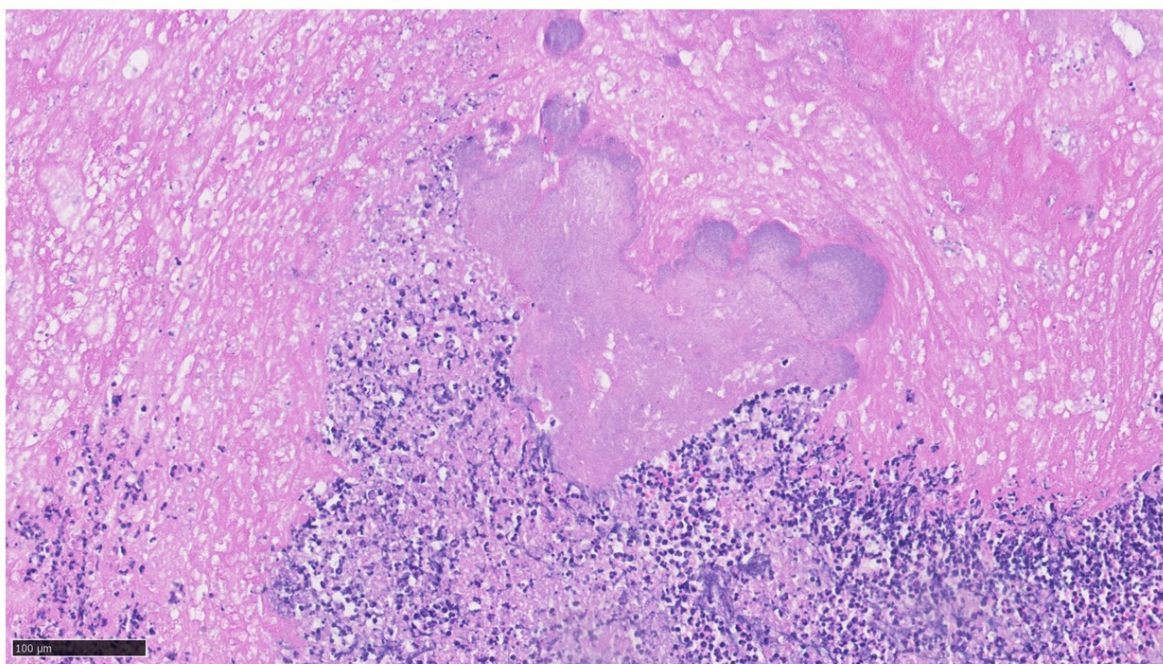


Figure S2. High power view of rectangle marked area of Figure 5 in HE staining. It shows central basophilic stippling represents a bacterial colony, deeply basophilic clumped material beneath represents degenerate neutrophils whilst the eosinophilic acellular fibrillar material is fibrin.



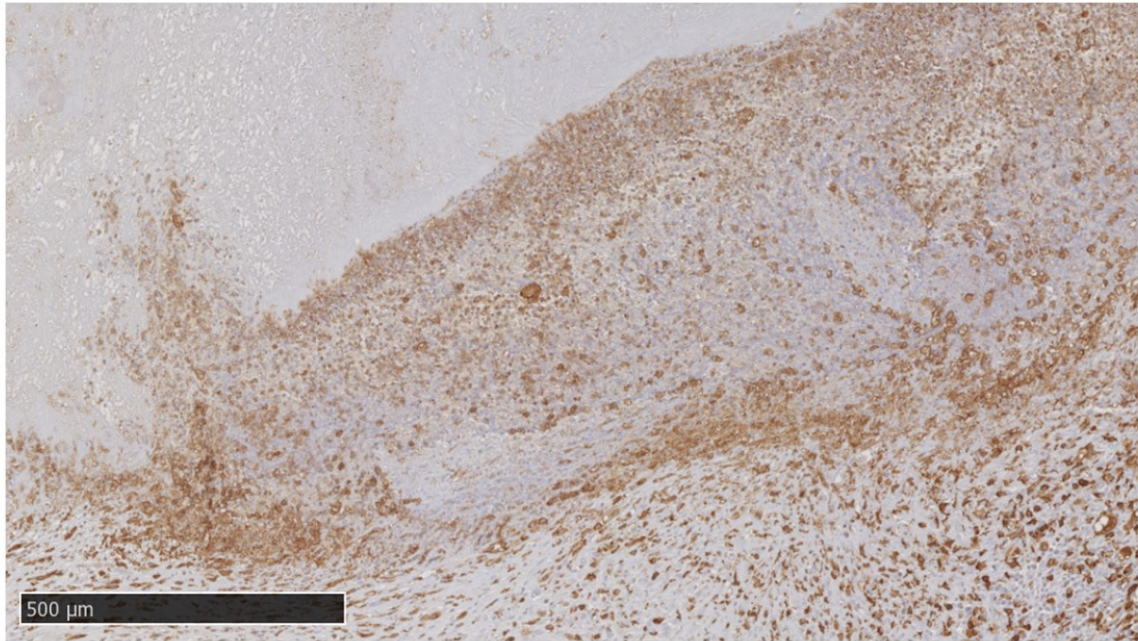


Figure S3. High power view of rectangle marked area of Figure 5 in Iba1 staining. It shows extensive infiltration, abruptly negative in the area of fibrin deposition top left.

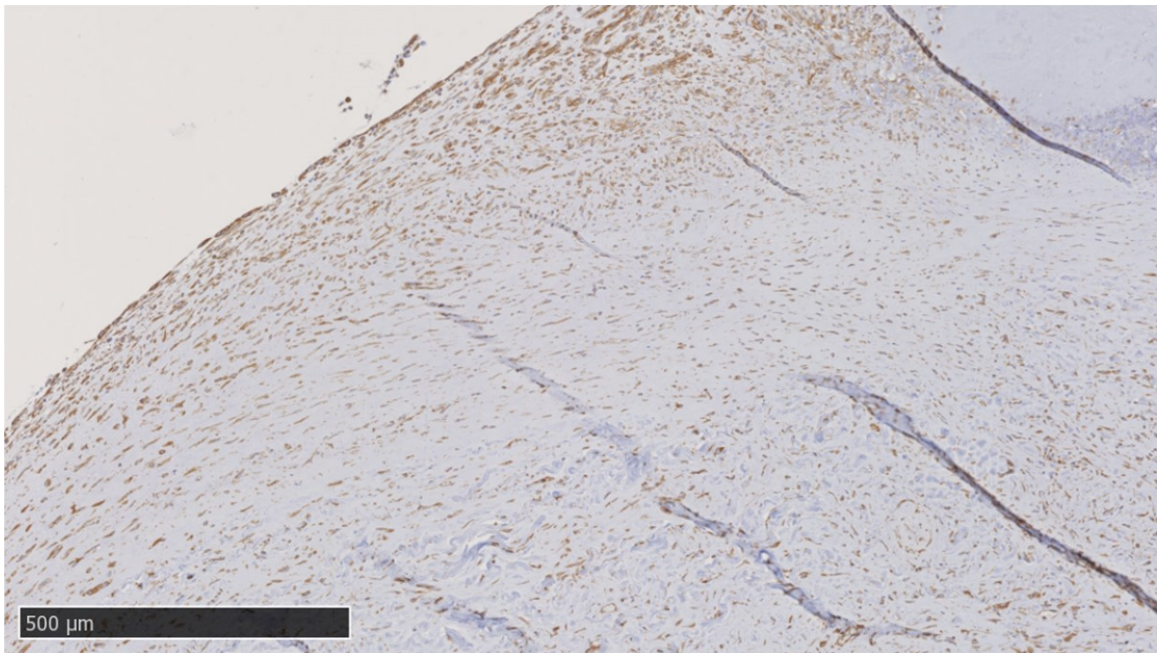


Figure S4. High power view of rectangle marked area of Figure 5 in Vimentin staining. It shows positive spindle shaped cells indicate stromal repopulation, abrupt end top right in area of fibrin deposition.

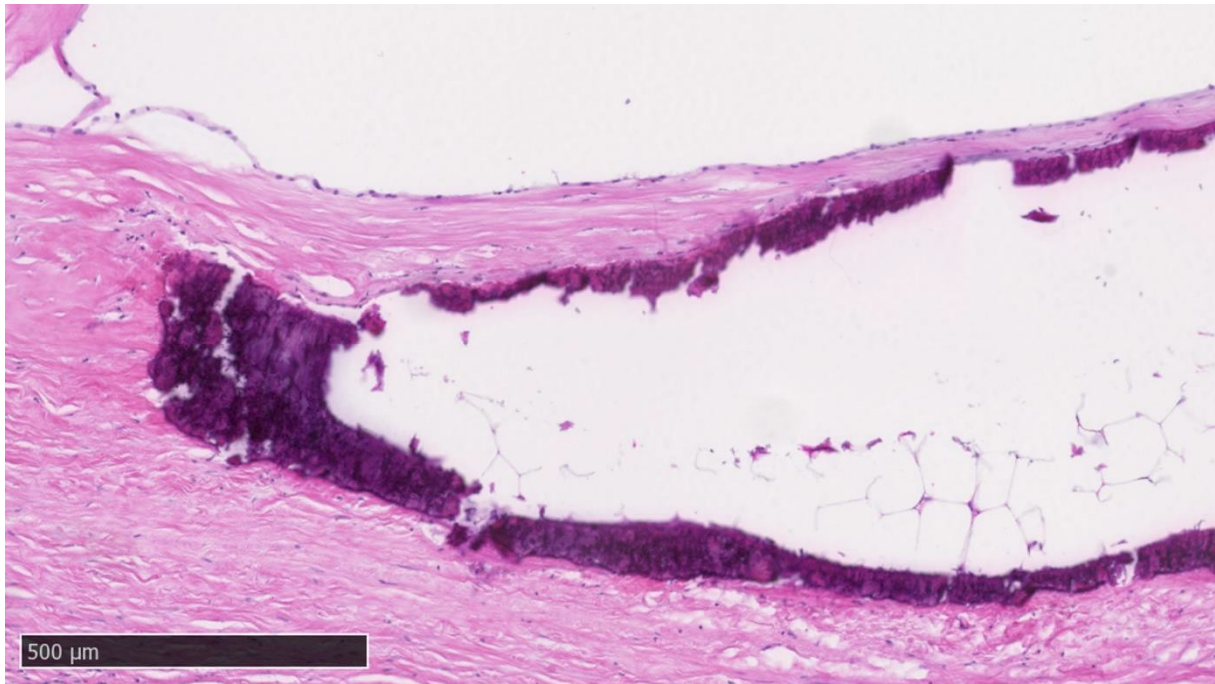


Figure S5. Same conduit as shown in Figure 5, representing a sheep died due to endocarditis. HE staining shows the wall of the conduit with mature bone; mineralised periphery and central adipose recapitulating the marrow cavity.