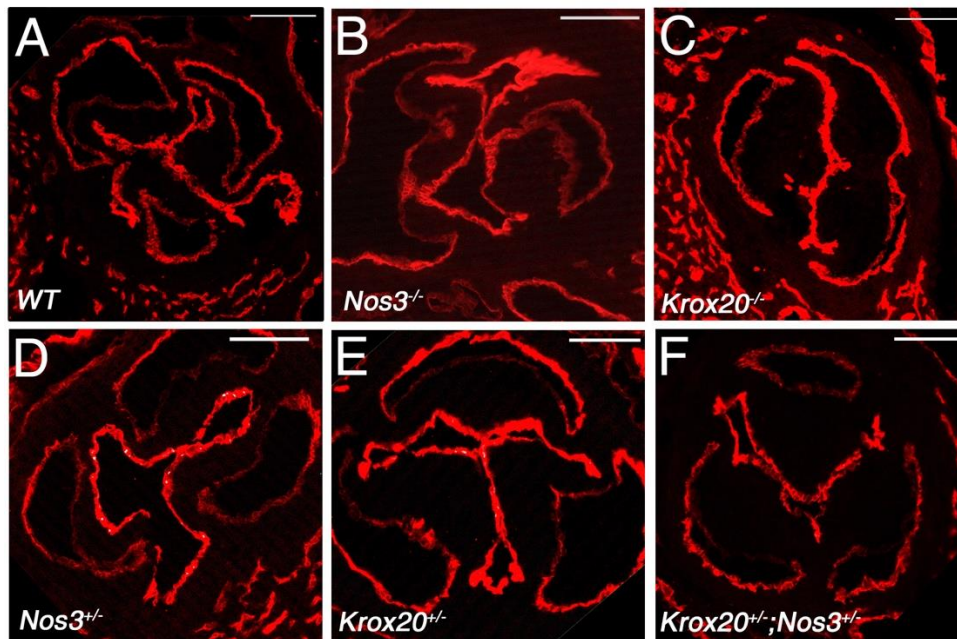
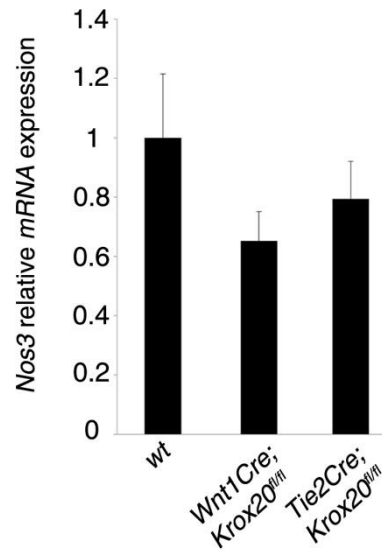


## Supplementary data



**Figure S1: Pecam expression showing integrity of the endothelium in all genotypes.** (A-F) Immunohistochemistry showing Pecam protein (red) in the aortic valve of wild-type (WT, **A**), *Nos3*<sup>-/-</sup> (**B**), *Krox20*<sup>-/-</sup> (**C**), *Nos3*<sup>+/-</sup> (**D**), *Krox20*<sup>+/-</sup> (**E**) and *Nos3*<sup>+/-</sup>;*Krox20*<sup>+/-</sup> (**F**) embryos at E18.5. Scale bars: 100 μm.



**Figure S2: *Nos3* expression in *Tie2-cre;Krox20fl/fl* and *Wnt1-cre;Krox20fl/fl* embryos at E18.5.** Real-time qPCR demonstrates a mild reduction of *Nos3* at a transcriptional level in *Tie2-cre;Krox20fl/fl* and *Wnt1-cre;Krox20fl/fl* compared to wild-type embryos (n=5 for each genotype). qPCR experiments were performed in triplicate and expressed as mean ±SEM.