

Figure S1. The root-knot nematode *M. incognita* on the fungal mat of *H. rhossiliensis* HR02. Image was taken under 10× objective lens and 10× ocular lens.

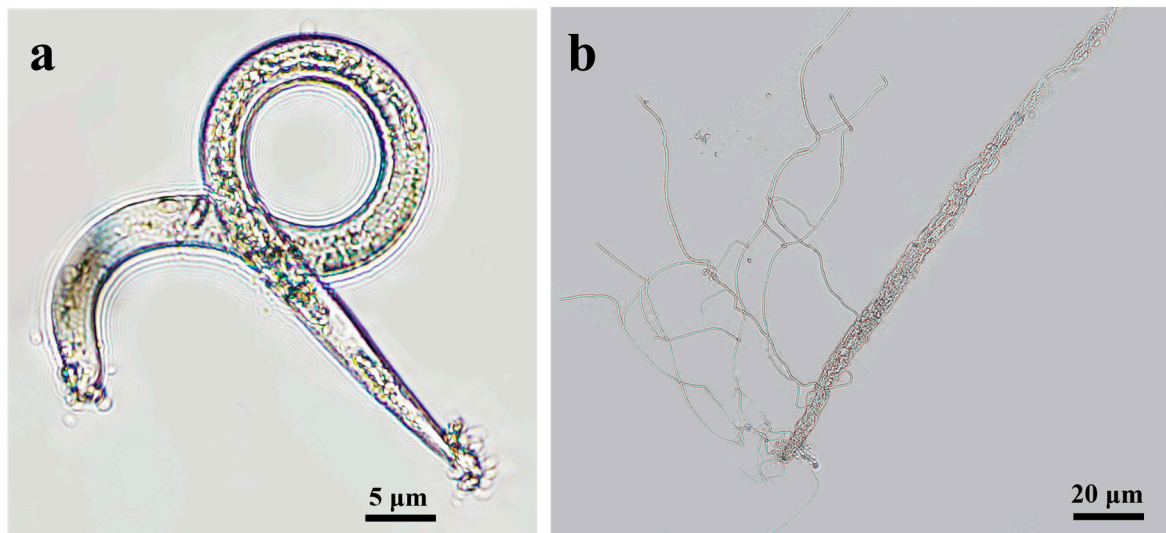


Figure S2. Infection of *H. rhossiliensis* HR02 on *M. incognita*. More conidia are gathered on the head and tail of the nematode (a) and hyphae grow out from the dead host (b).

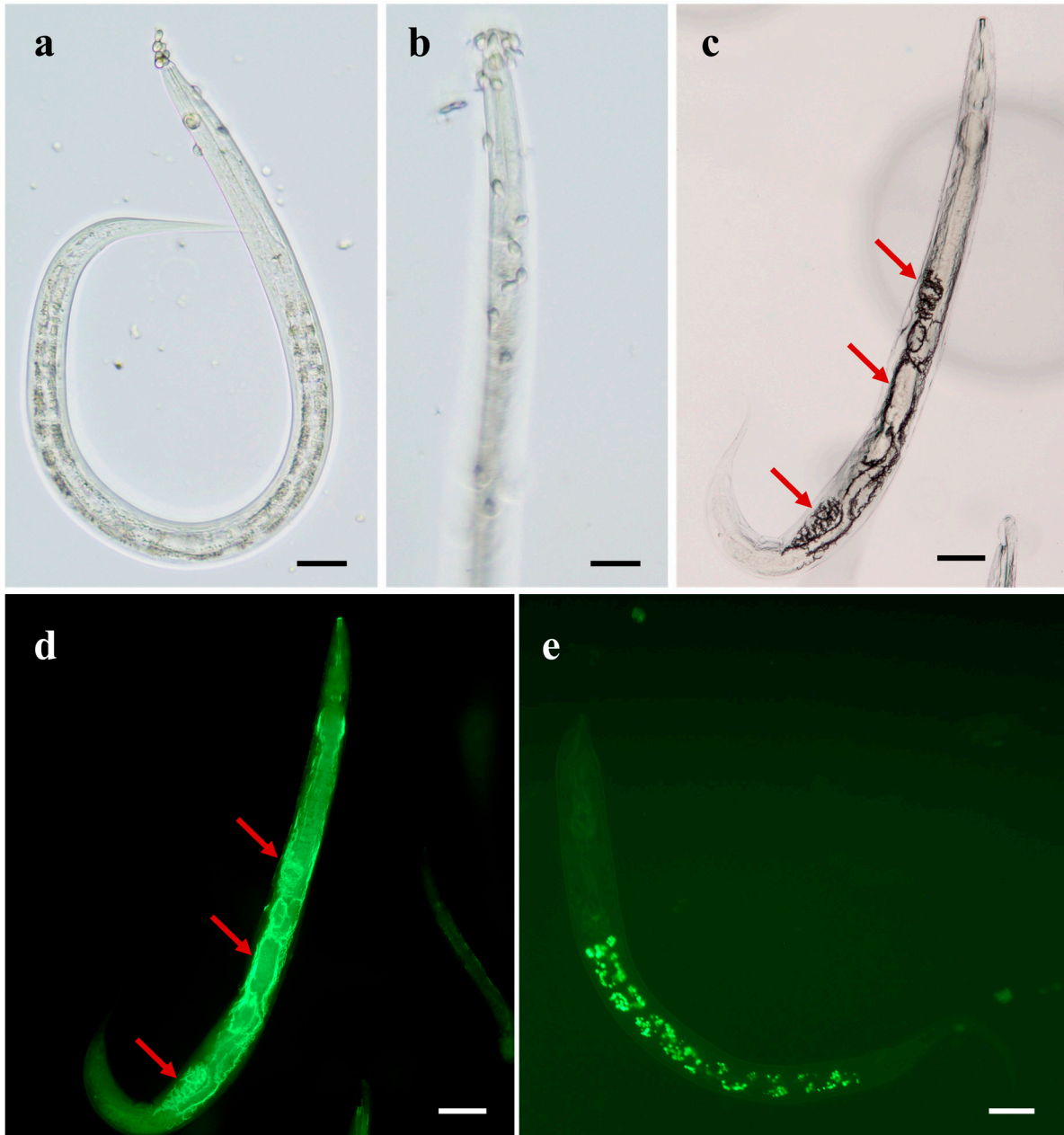


Figure S3. Infection of *H. rhossiliensis* HR02 on *C. elegans*. Conidia spores are attached to the cuticle (a); some enter into the intestine by swallowing from mouth (b); hyphae grow in the body (c); infected nematode under fluorescence condition (d); the control nematode with autofluorescence in the intestine (e).