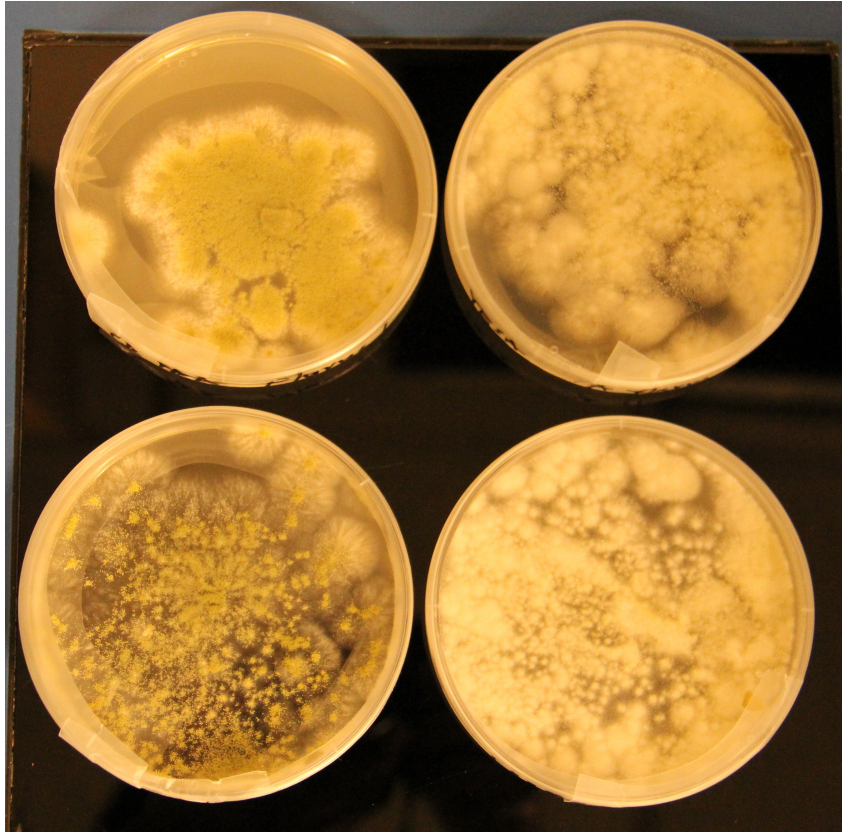
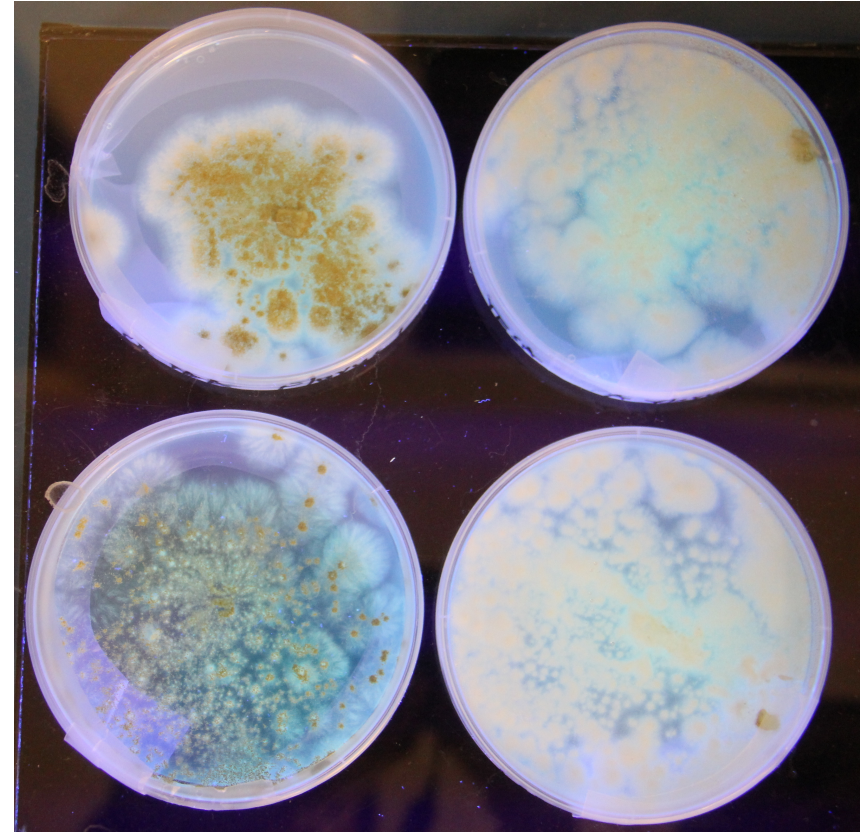


*A. flavus* isolate 1 (normal view)

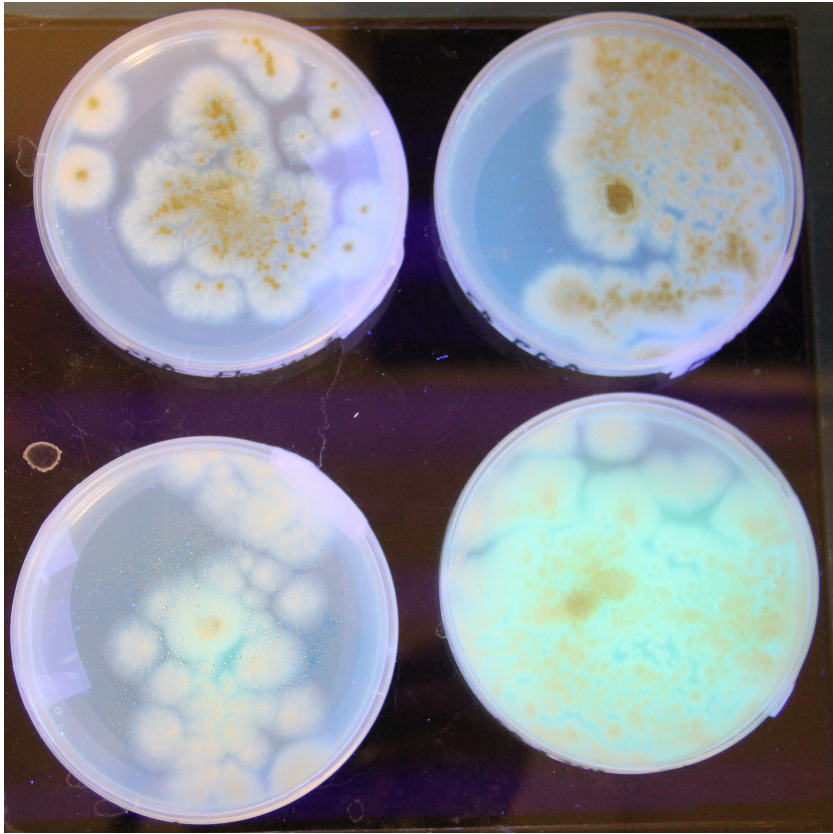


*A. flavus* isolate 1 (under UV)

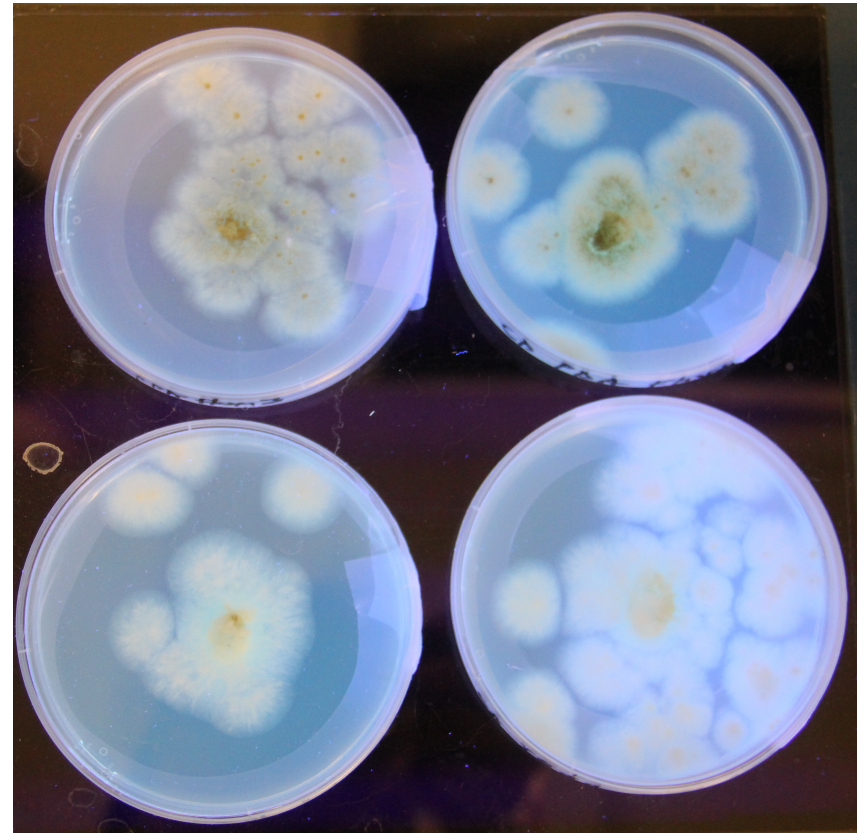


From the Top left; PDA without cyclodextrin, top right; PDA with cyclodextrin, bottom left; Yeast extract sucrose agar (YESA) without cyclodextrin, bottom right; YESA amended with cyclodextrin

**Supplementary figure S1: Visual screening of *A. flavus* isolates**

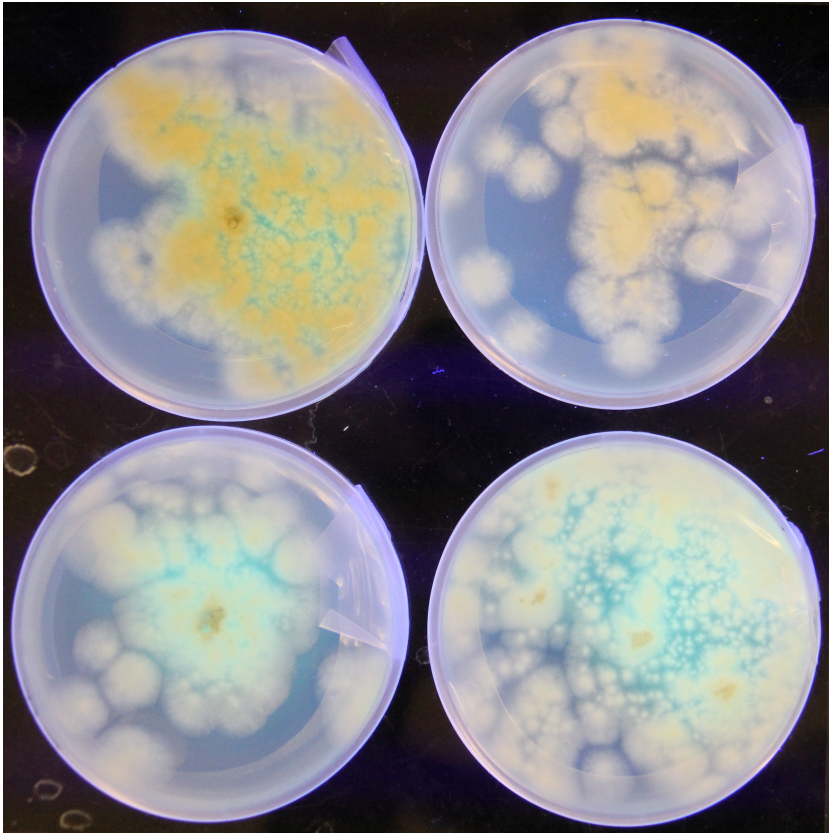


*A. flavus* isolate 2 (under UV)

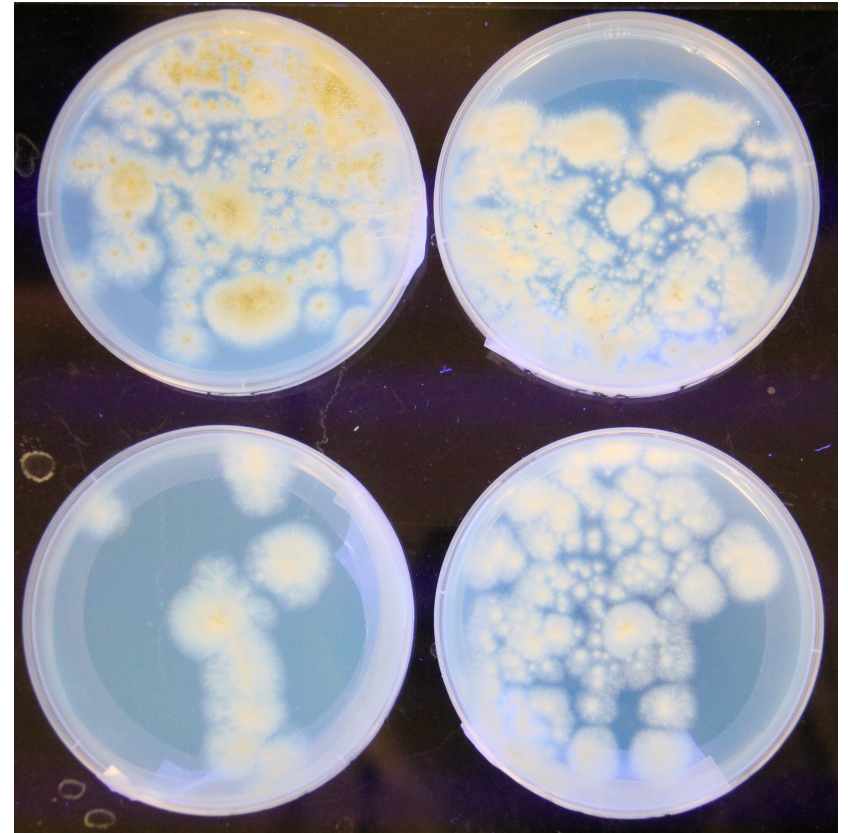


*A. flavus* isolate 3 (under UV)

**Supplementary figures**

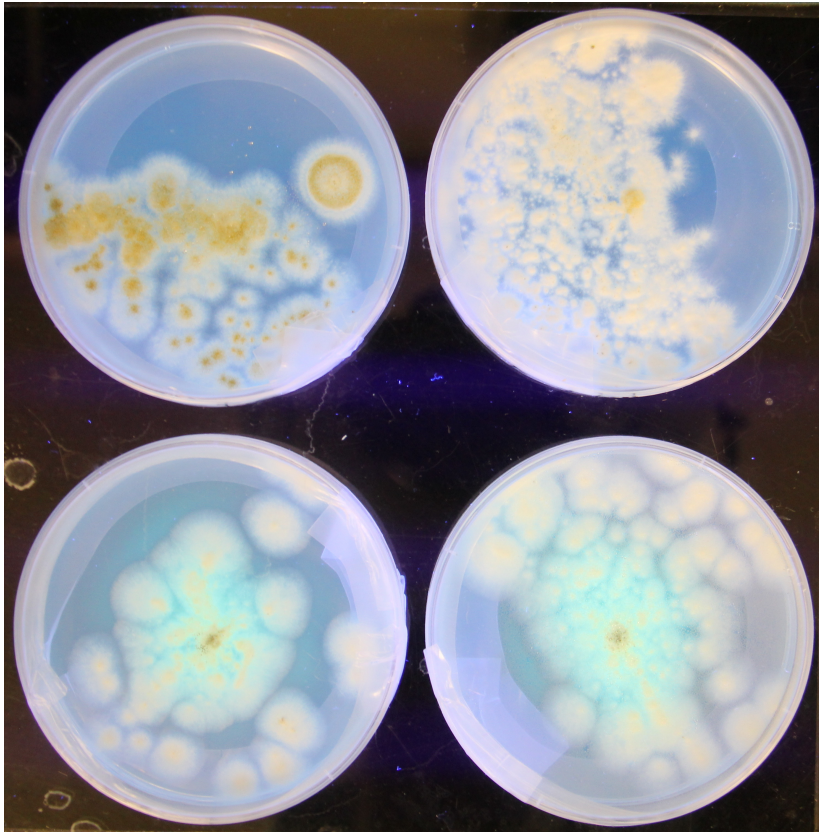


*A. flavus* isolate (4 under UV)

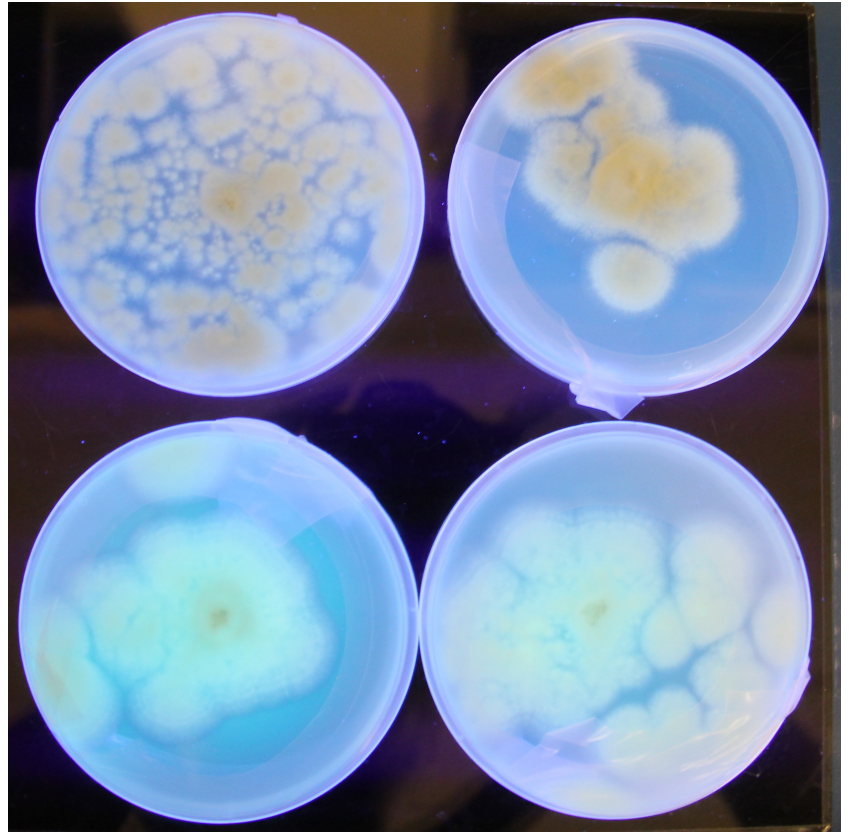


*A. flavus* isolate 5 (under UV)

**Supplementary figures**



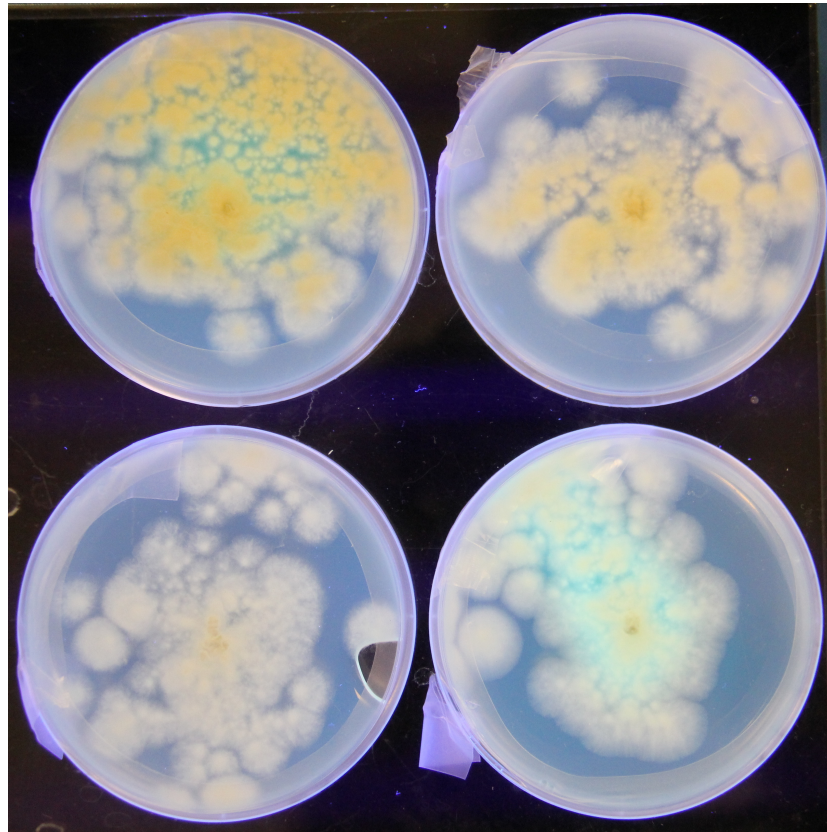
*A. flavus* isolate 6 (under UV)



*A. flavus* isolate 7 (under UV)

**Supplementary figures**

*A. flavus* isolate 8 (under UV)



**Supplementary figures**