

Supplementary Materials

Living fungi in an opencast limestone mine: who are they and what they can do?

Chakriya Sansupa ¹, Witoon Purahong ^{2,*}, Ali Nawaz ^{3,4}, Tesfaye Wubet ^{3,5}, Nakarin Suwannarach ^{1,6}, Panuwan Chantawannakul ¹, Sutthathorn Chairuangsi ¹, Terd Disayathanoowat ^{1,6,7,*}

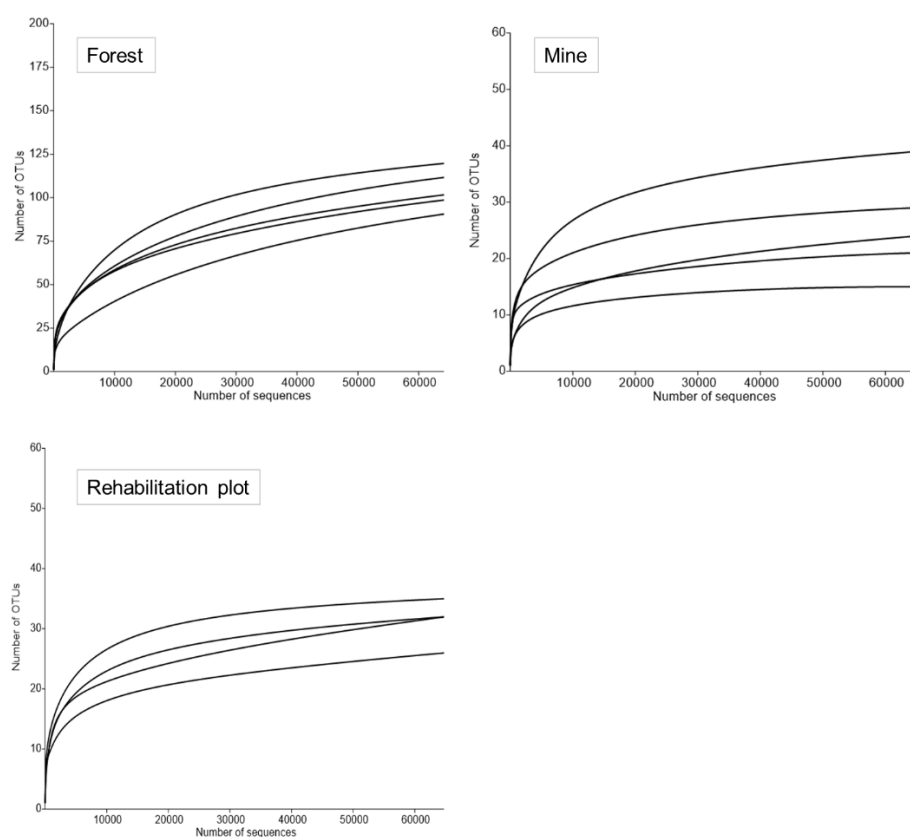


Figure S1. Rarefaction curve of observed fungal OTUs across three study sites.

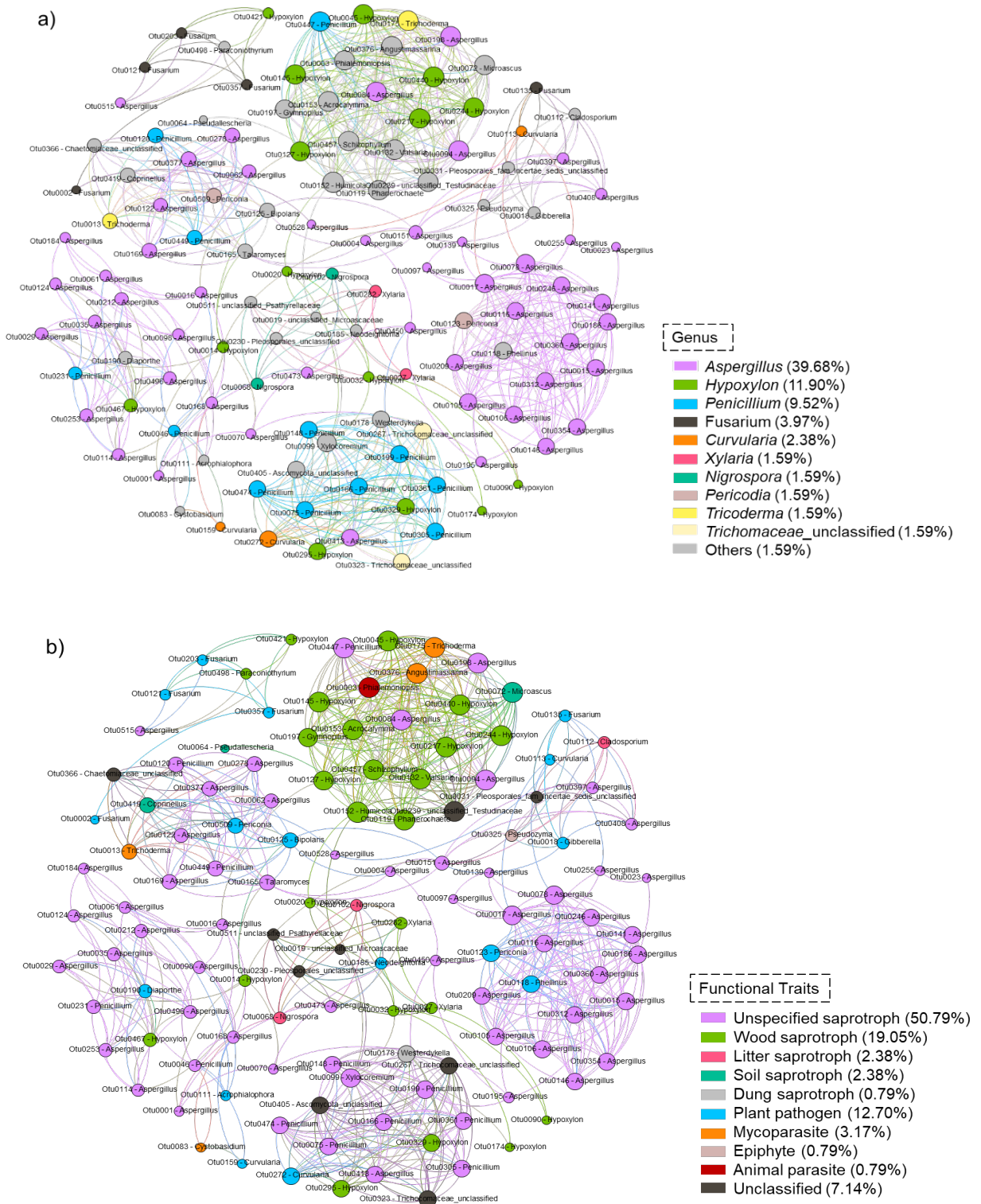


Figure S2. Co-occurrence network of fungal OTUs detected in harsh environment of mining and rehabilitation sites, highlighting (a) taxonomic distribution at genus level and (b) functional distribution based on FungalTrait.