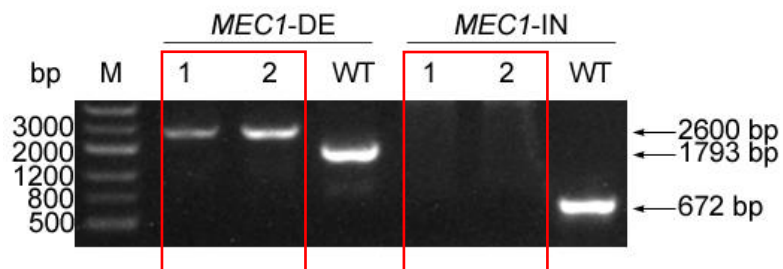
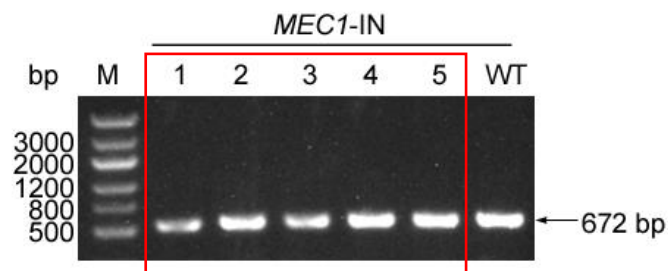


Molecular characterization of strains

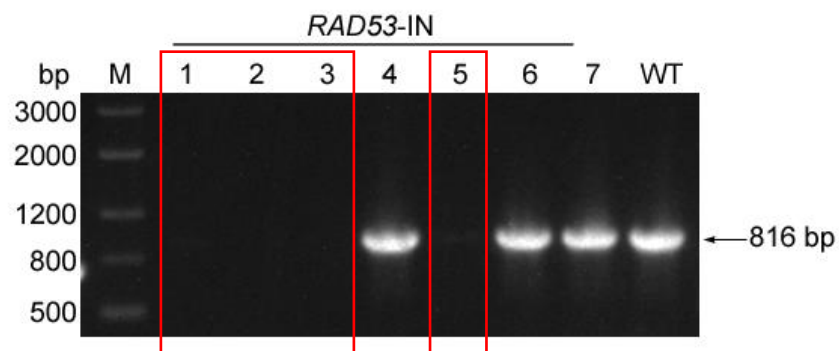
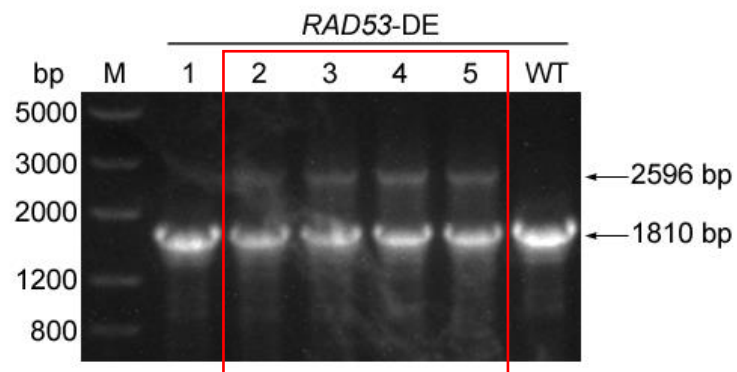
1. Molecular characterization of *mec1Δ/Δ* strains



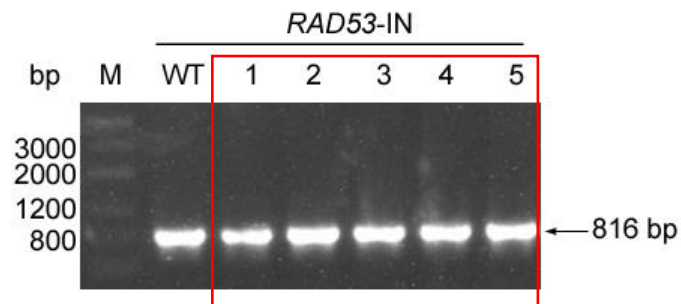
2. Molecular characterization of *MEC1c* strains (reintegrant control strains)



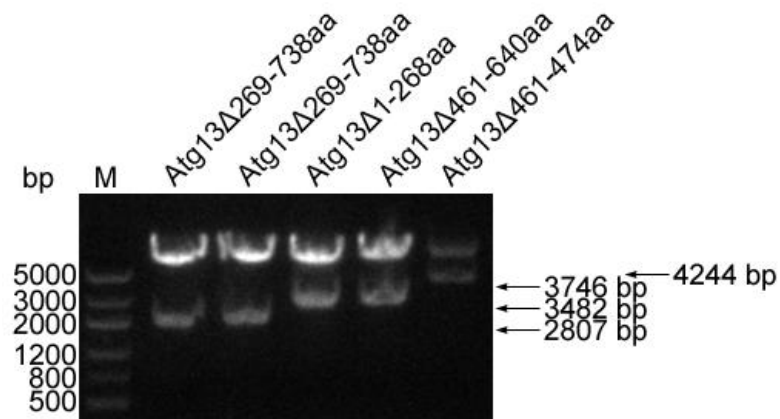
3. Molecular characterization of *rad53Δ/Δ* strains



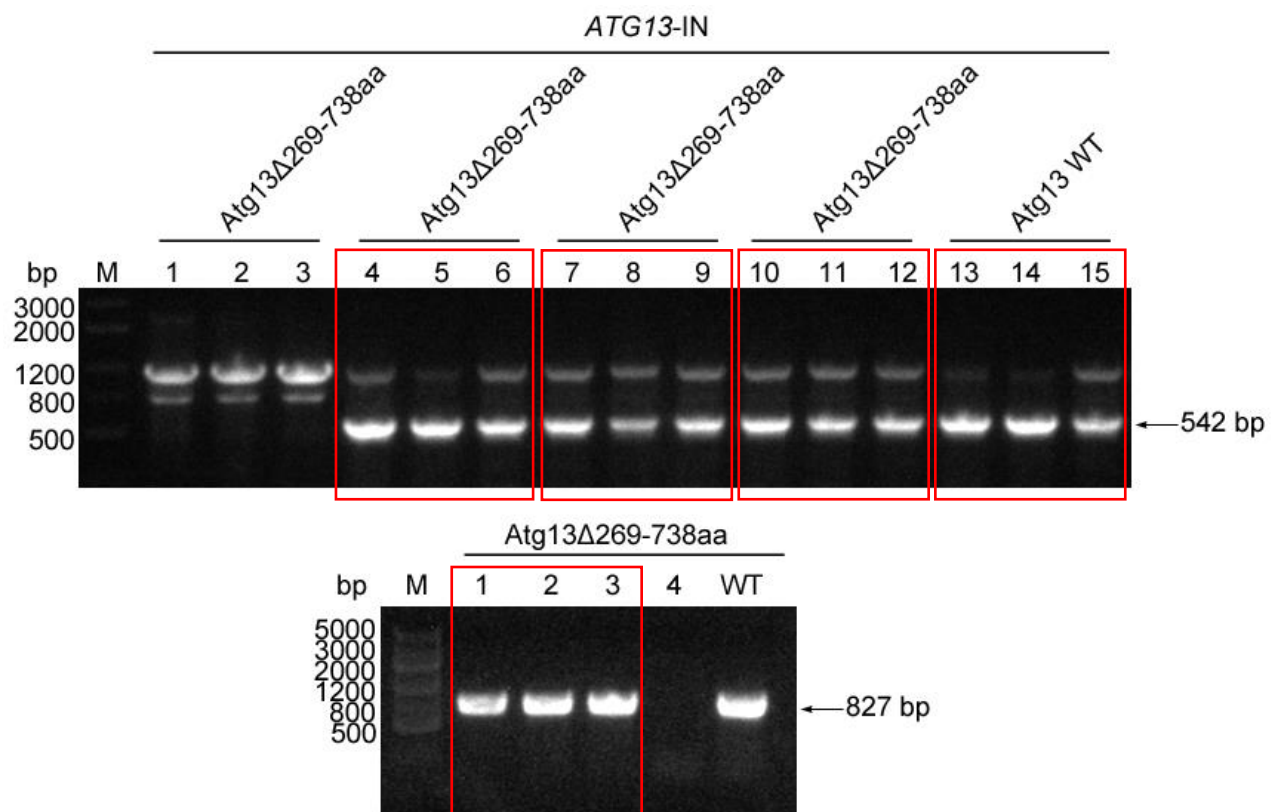
4. Molecular characterization of *RAD53c* strains (reintegrant control strains)



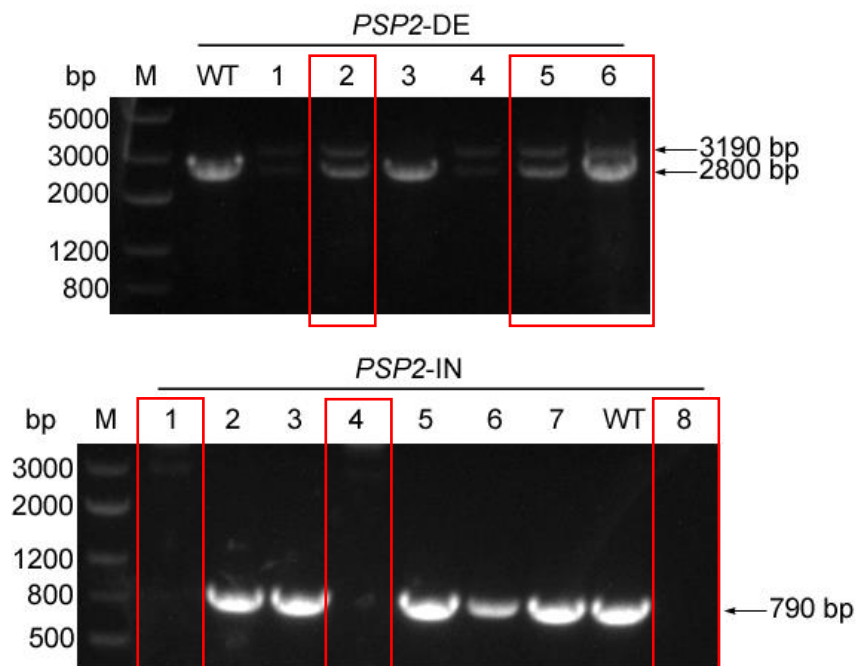
5. Double enzyme digestion of *ATG13* truncated plasmids



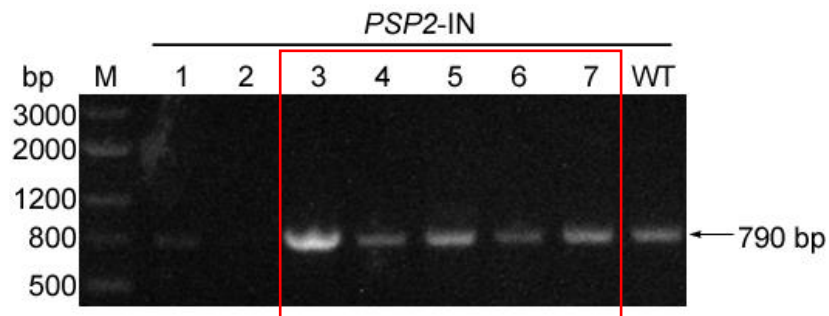
6. Molecular characterization of *ATG13* truncated strains



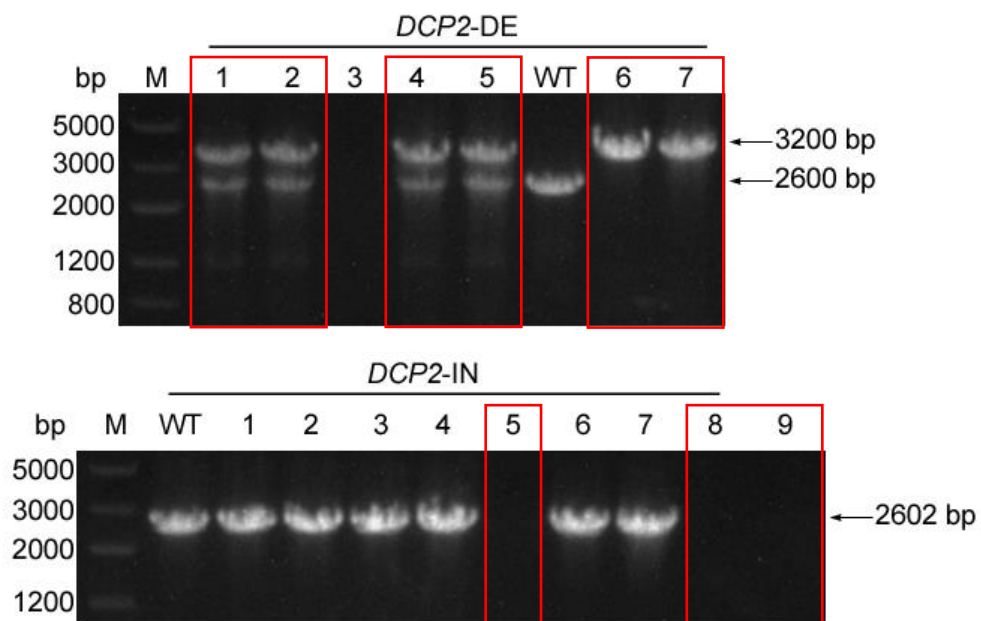
7. Molecular characterization of *psp2Δ/Δ* strains



8. Molecular characterization of *PSP2c* strains (reintegrant control strains)



9. Molecular characterization of *dcp2Δ/Δ* strains



10. Molecular characterization of *DCP2c* strains (reintegrant control strains)

